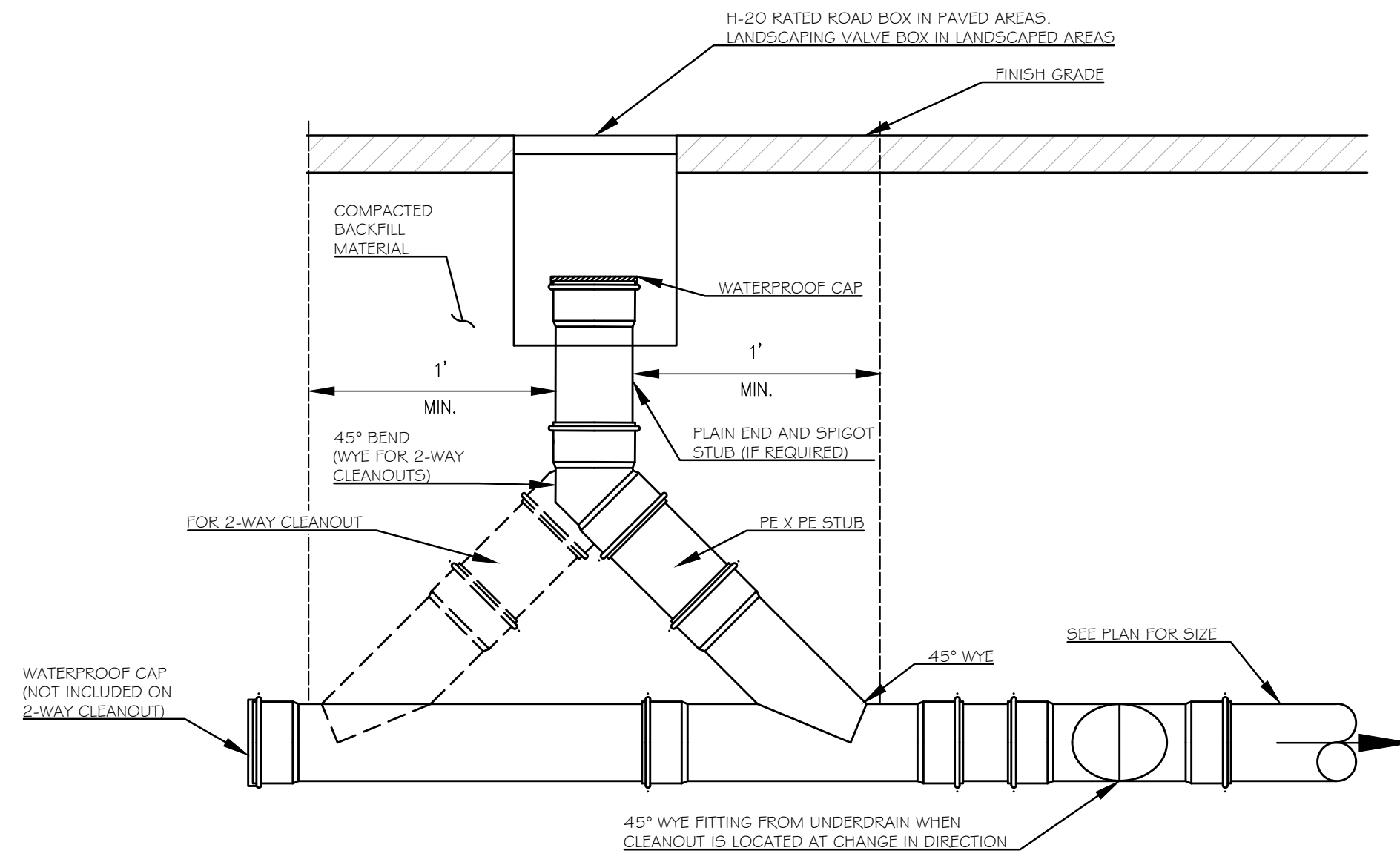
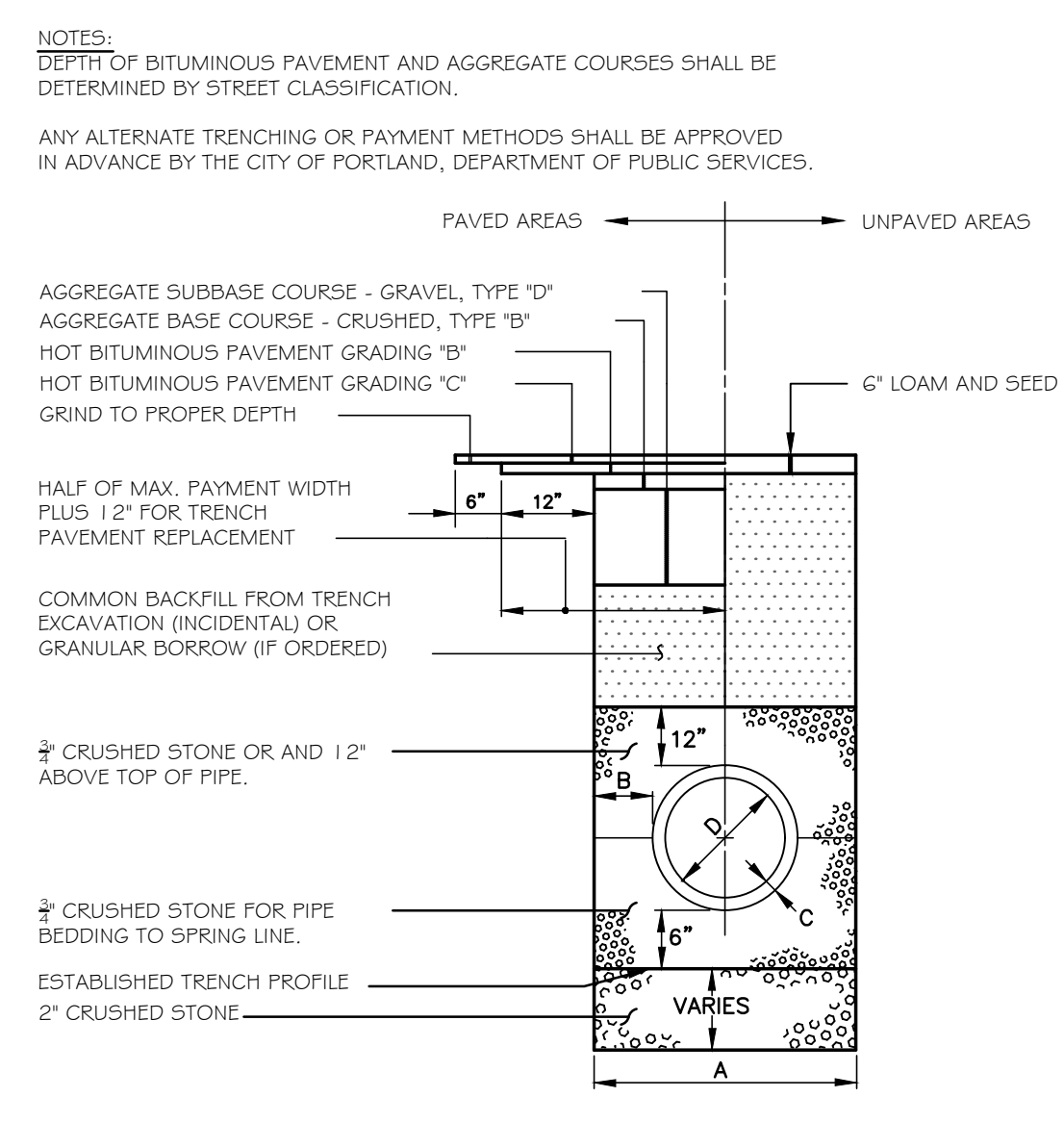


- NOTES:**
1. ALL WORK TO CONFORM TO THE PORTLAND WATER DISTRICT STANDARDS AND REQUIREMENTS.
  2. D.I.P. MAY BE USED FOR VALVE BOX EXTENSIONS.
  3. VALVE BOX SHOULD NOT CONTACT WATER MAIN OR VALVE.
  4. CONCRETE PROTECTOR RING SHALL BE USED IN ALL UNPAVED AREAS.

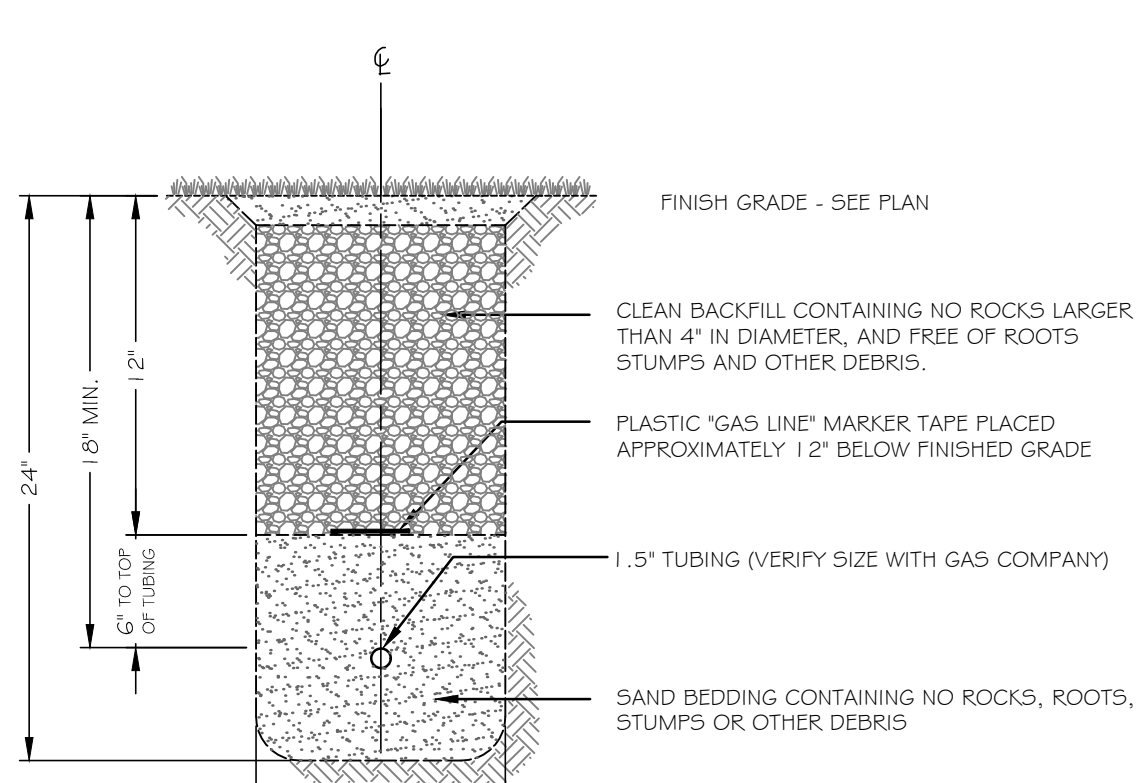
**1**  
C402 VALVE AND VALVE BOX INSTALLATION DETAIL  
NOT TO SCALE



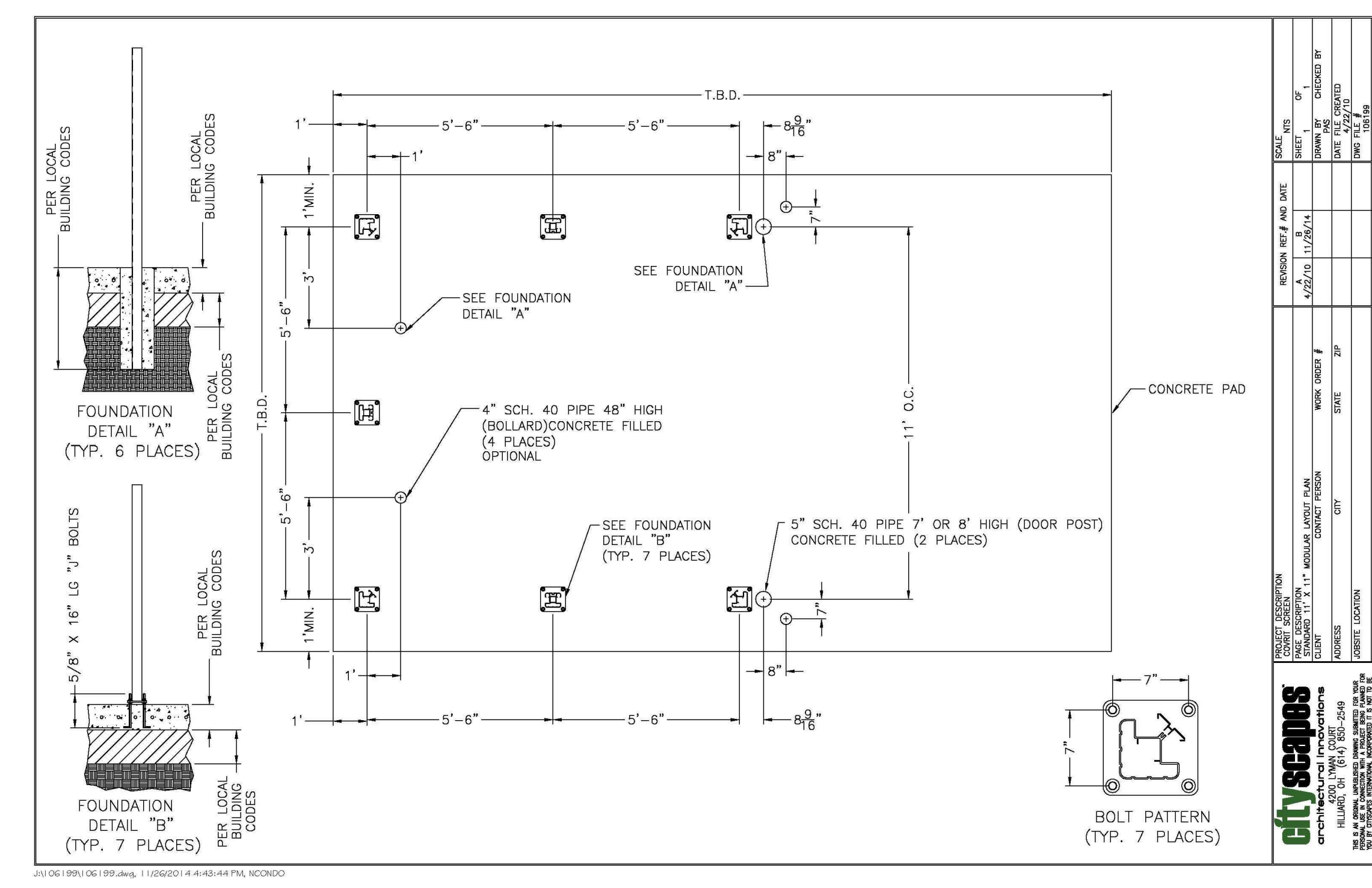
**2**  
C402 SEWER/STORM DRAIN CLEANOUT  
NOT TO SCALE



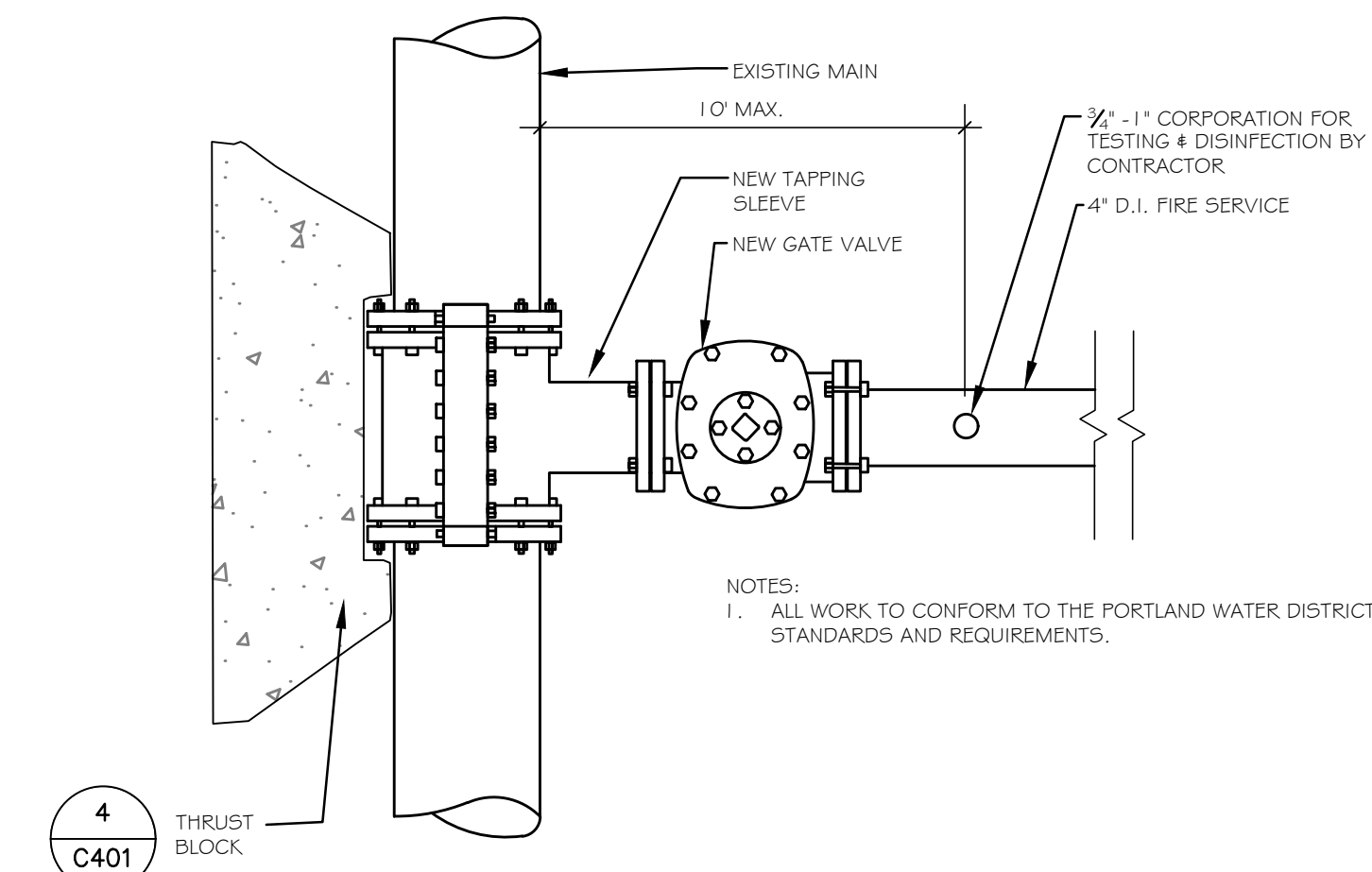
**3**  
C402 TYPICAL PIPE TRENCH & ROAD REPAIR DETAIL  
NOT TO SCALE



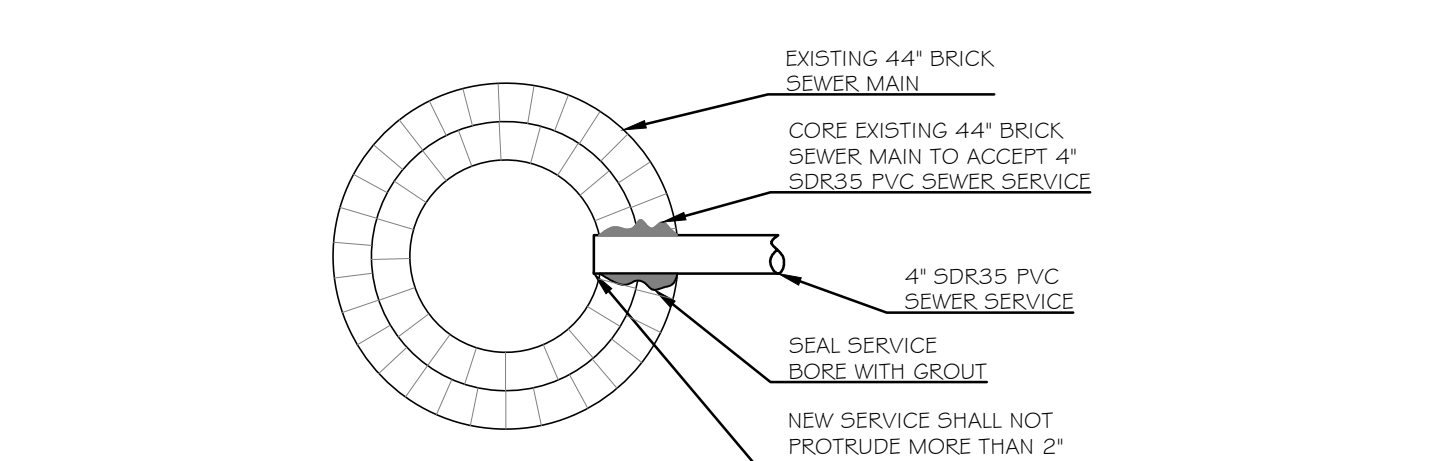
**4**  
C402 GAS LINE TRENCH SECTION  
NOT TO SCALE



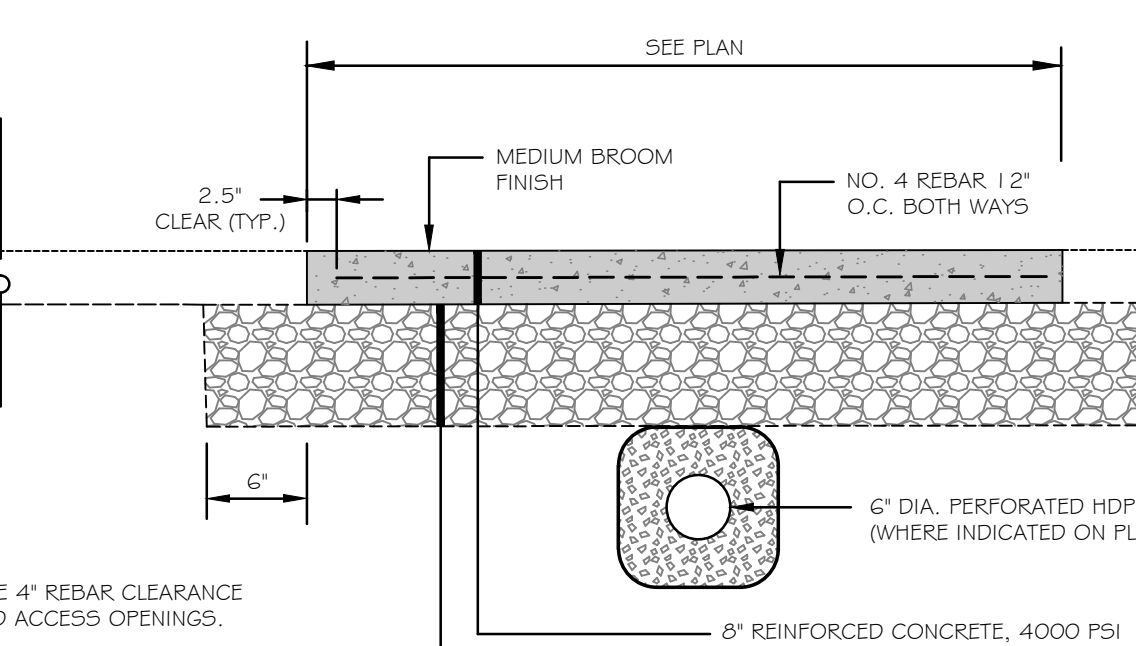
**5**  
C402 DUMPSTER ENCLOSURE DETAIL  
NOT TO SCALE



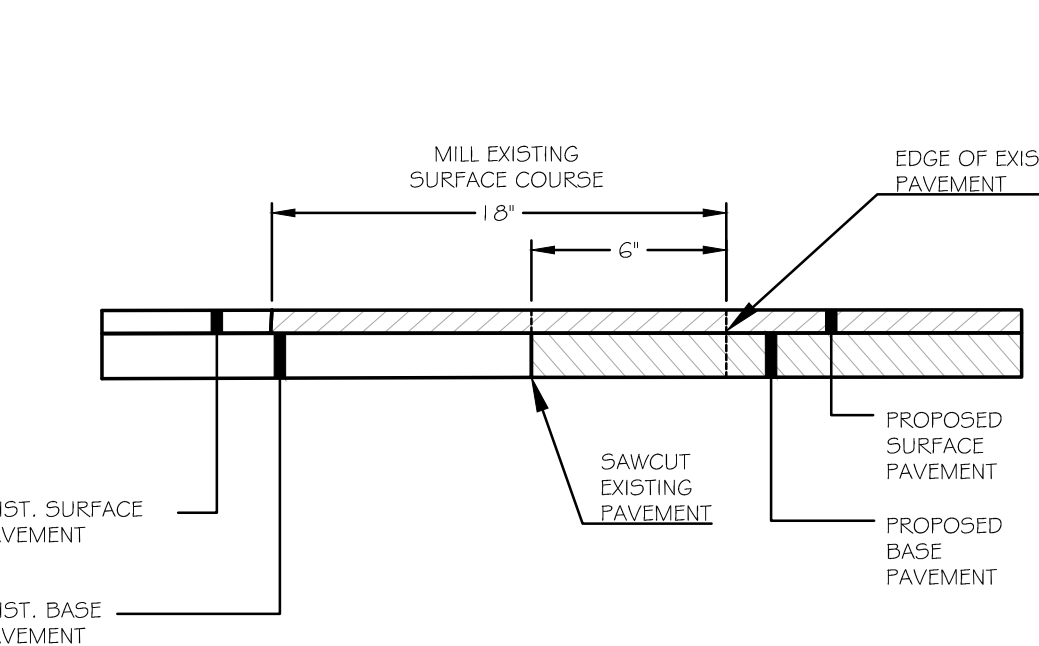
**6**  
C402 STANDARD TAPPING SLEEVE DETAIL (ALTERNATE #1)  
NOT TO SCALE



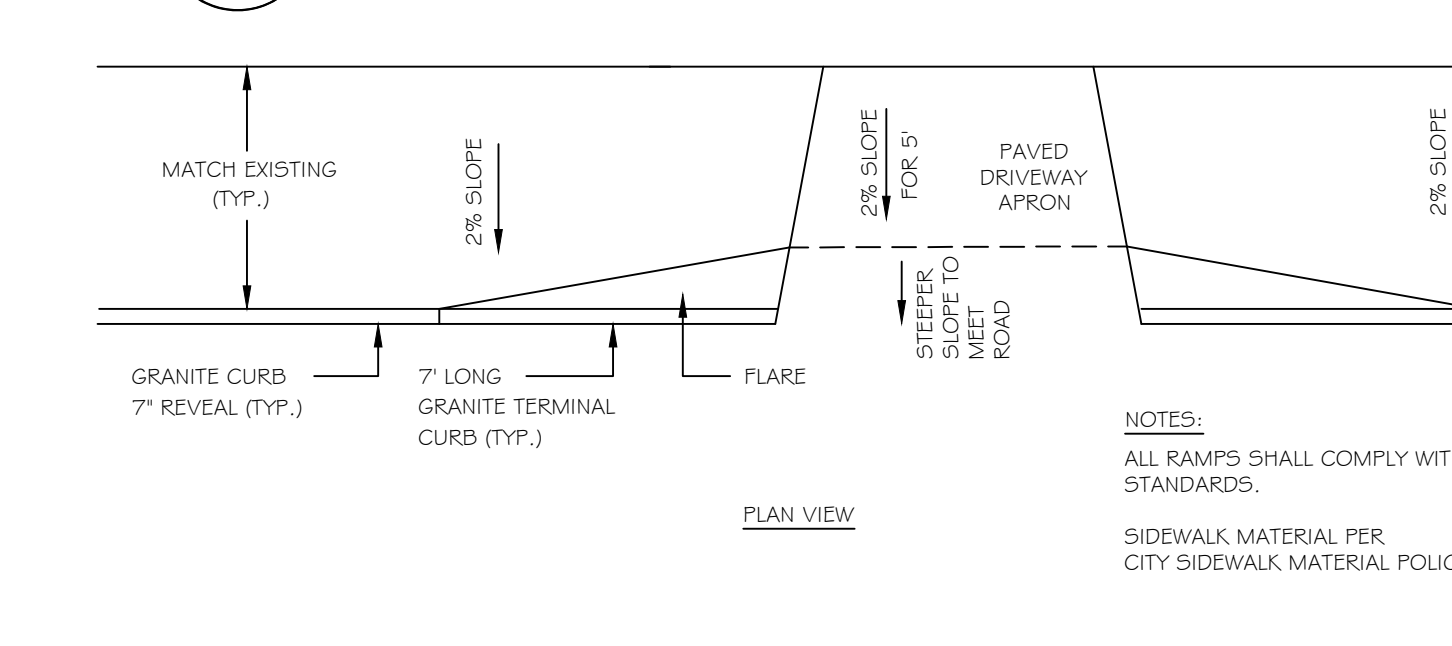
**7**  
C402 SEWER CONNECTION DETAIL  
NOT TO SCALE



**8**  
C402 CONCRETE PAD  
NOT TO SCALE



**9**  
C402 HMA PAVEMENT BUTT JOINT DETAIL  
NOT TO SCALE



**10**  
C402 CURB RAMP DETAIL AT DRIVEWAY APRON  
NOT TO SCALE