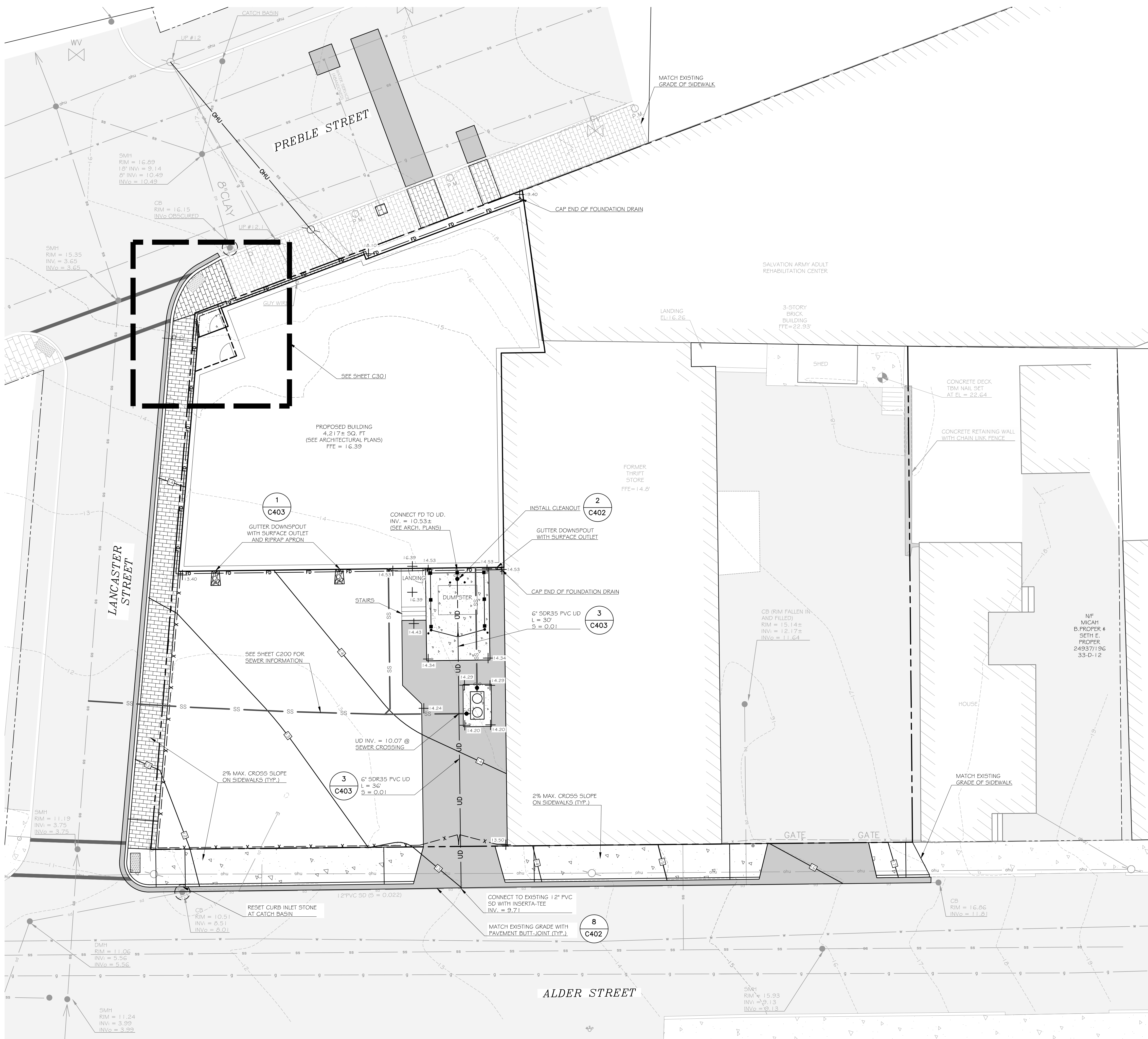


COPYRIGHT: Reuse or reproduction of the contents of this document is not permitted without written permission of Bild Architecture LLC



- GENERAL NOTES:**
- SEE GENERAL NOTES AND PLAN REFERENCES ON SHEET C100.
- EXISTING UTILITY NOTES:**
- THE UNDERGROUND UTILITIES HEREON SHOWN HAVE BEEN LOCATED FROM FIELD SURVEY INFORMATION AND EXISTING DRAWINGS. THE DESIGN ENGINEER MAKES NO GUARANTEES THAT THE UNDERGROUND UTILITIES SHOWN COMPRISE ALL UTILITIES IN THE AREA, EITHER IN SERVICE OR ABANDONED. THE DESIGN ENGINEER FURTHER DOES NOT WARRANT THAT THE UNDERGROUND UTILITIES SHOWN ARE IN THE EXACT LOCATION INDICATED ALTHOUGH THEY ARE LOCATED AS ACCURATELY AS POSSIBLE FROM AVAILABLE INFORMATION.
- LAYOUT, MATERIALS, AND UTILITY NOTES:**
- ALL DIMENSIONS, LOCATIONS AND CONTROLS SHALL BE VERIFIED IN THE FIELD BY THE CONTRACTOR PRIOR TO ANY CONSTRUCTION ACTIVITIES. ANY DISCREPANCIES SHALL BE REPORTED IMMEDIATELY TO THE OWNER OR OWNERS REPRESENTATIVE.
 - PROVIDE A SMOOTH TRANSITION WHERE NEW WORK MEETS EXISTING.
 - ALL PROPOSED WORK WITHIN THE ALDER STREET AND LANCASTER RIGHT-OF-WAYS SHALL MEET THE CITY OF PORTLAND TECHNICAL MANUAL STANDARDS.
 - INSTALL CATCH BASIN INLET PROTECTION IN DOWNGRADIANT CATCH BASINS IN ALL DIRECTIONS PRIOR TO EXCAVATION IN STREET.
 - CONTRACTOR SHALL SUBMIT A TRAFFIC MANAGEMENT PLAN TO THE DEPARTMENT OF PUBLIC WORKS FOR APPROVAL PRIOR TO ANY STREET AND/OR SIDEWALK CLOSURES.
 - ALL STREET CLOSURES SHALL BE PERFORMED DURING OFF-PEAK HOURS OR DURING THE NIGHT.
 - SEE SHEET C100 FOR ADDITIONAL EROSION CONTROL BMP INFORMATION.
- EROSION CONTROL NOTES:**
- INSTALL EROSION CONTROLS PRIOR TO EARTHWORK ACTIVITIES.
 - SEE EROSION CONTROL LOCATIONS ON SHEET C100 AND EROSION CONTROL NOTES AND DETAILS ON SHEET C400.

LEGEND

EXISTING	PROPOSED
	PROPERTY LINE
	ABUTTER LOT LINE
	PROPERTY CORNER
	SANITARY SEWER LINE
	SANITARY SEWER CLEANOUT
	STORMDRAIN LINE
	UNDERDRAIN LINE
	FOUNDATION DRAIN LINE
	STORMDRAIN CLEANOUT
	UTILITY POLE
	BUILDING
	METAL FENCING
	EDGE OF PAVEMENT
	EDGE OF CONCRETE
	GRANITE CURB
	BRICK SIDEWALK

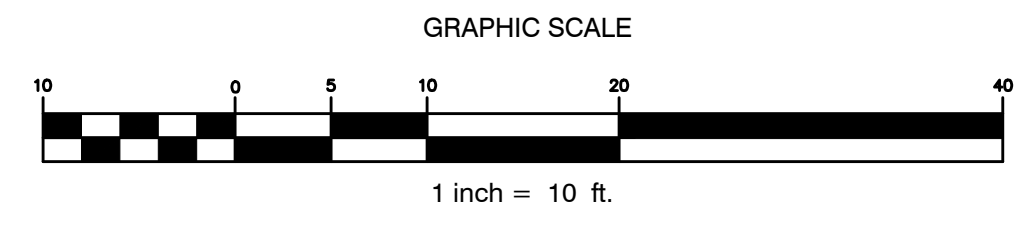
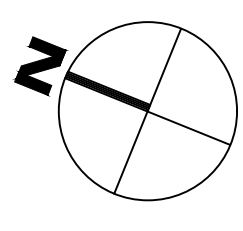


Bild Architecture
 PO Box 8235
 Portland, ME
 04104
 207.740.0168
 evan@bildarchitecture.com

WALSH ENGINEERING ASSOCIATES, INC.
 ENGINEERING ARCHITECTURE
 207.583.8898 | www.walsh-inc.com
 Copyright © 2016

PROJECT NO. 15031
PROJECT NAME SALVATION ARMY PORTLAND, MAINE

DOCUMENTS NOT FOR CONSTRUCTION

ISSUE DATE 8/2/16
DRAWN BY SWC
SHEET TITLE Grading and Drainage Plan

REVISIONS

NO.	DESCRIPTION
1	
2	
3	
4	
5	

ISSUE DATE 8/2/16
SHEET SCALE 1" = 10'

STATE OF MAINE
 SILAS W. CANAVAN
 No. 12639
 REGISTERED PROFESSIONAL ENGINEER
 8/2/16

300