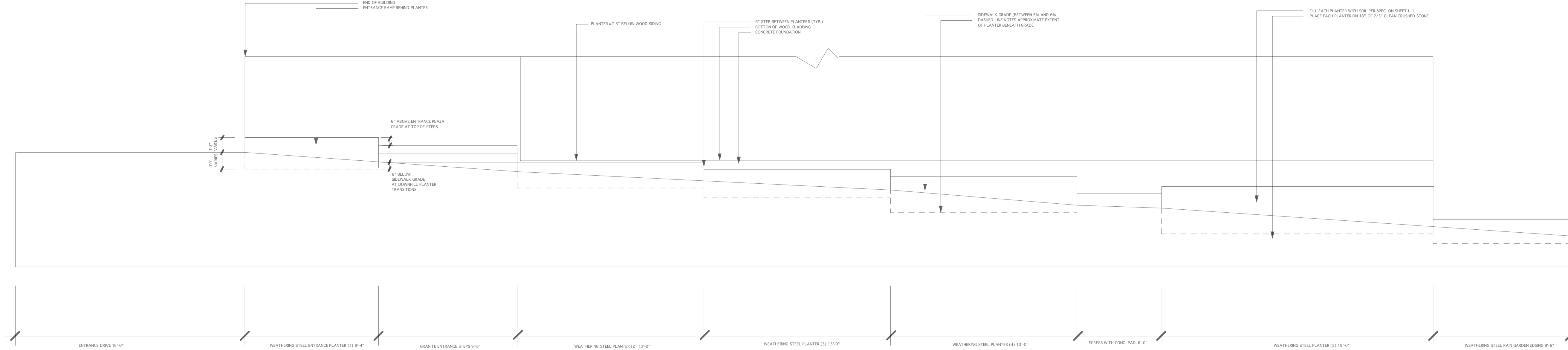
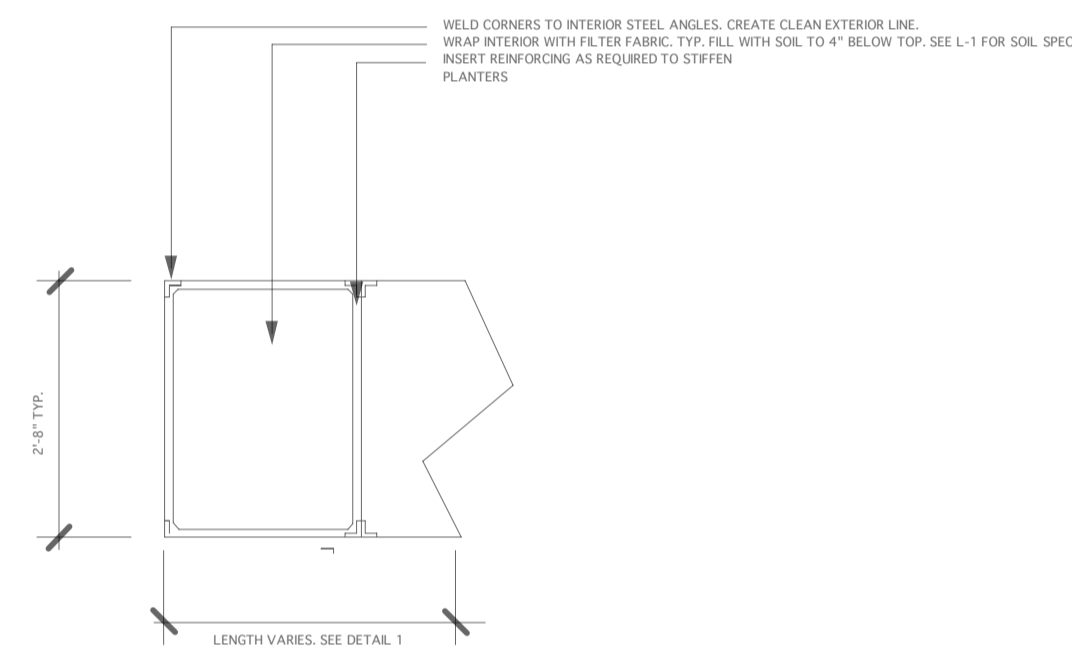


NOTE: PLANTERS ALIGN WITH BUILDING FENESTRATIONS, SPECIFICALLY PLANTERS 2, 3 AND 4. REFER TO BUILDING ELEVATIONS TO CONFIRM ALIGNMENTS AND STEPS IN PLANTERS



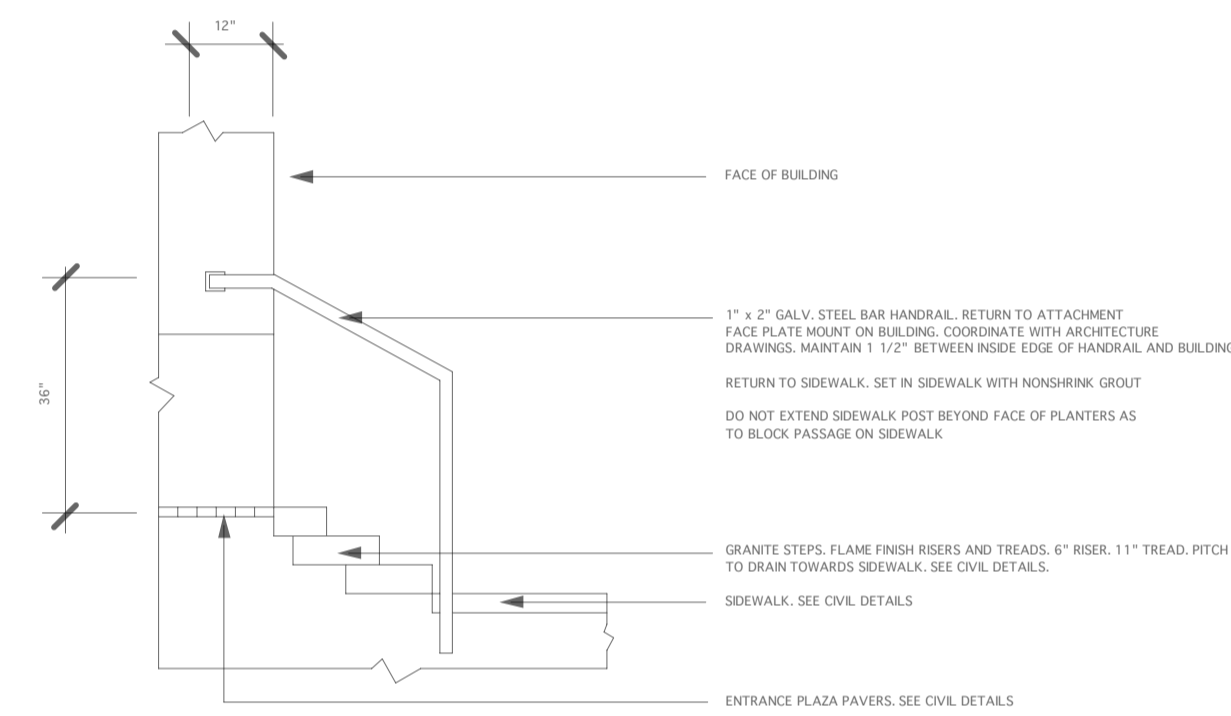
1 FRONT WEATHERING STEEL PLANTERS ELEVATION / SECTIONS

1/4" = 1'



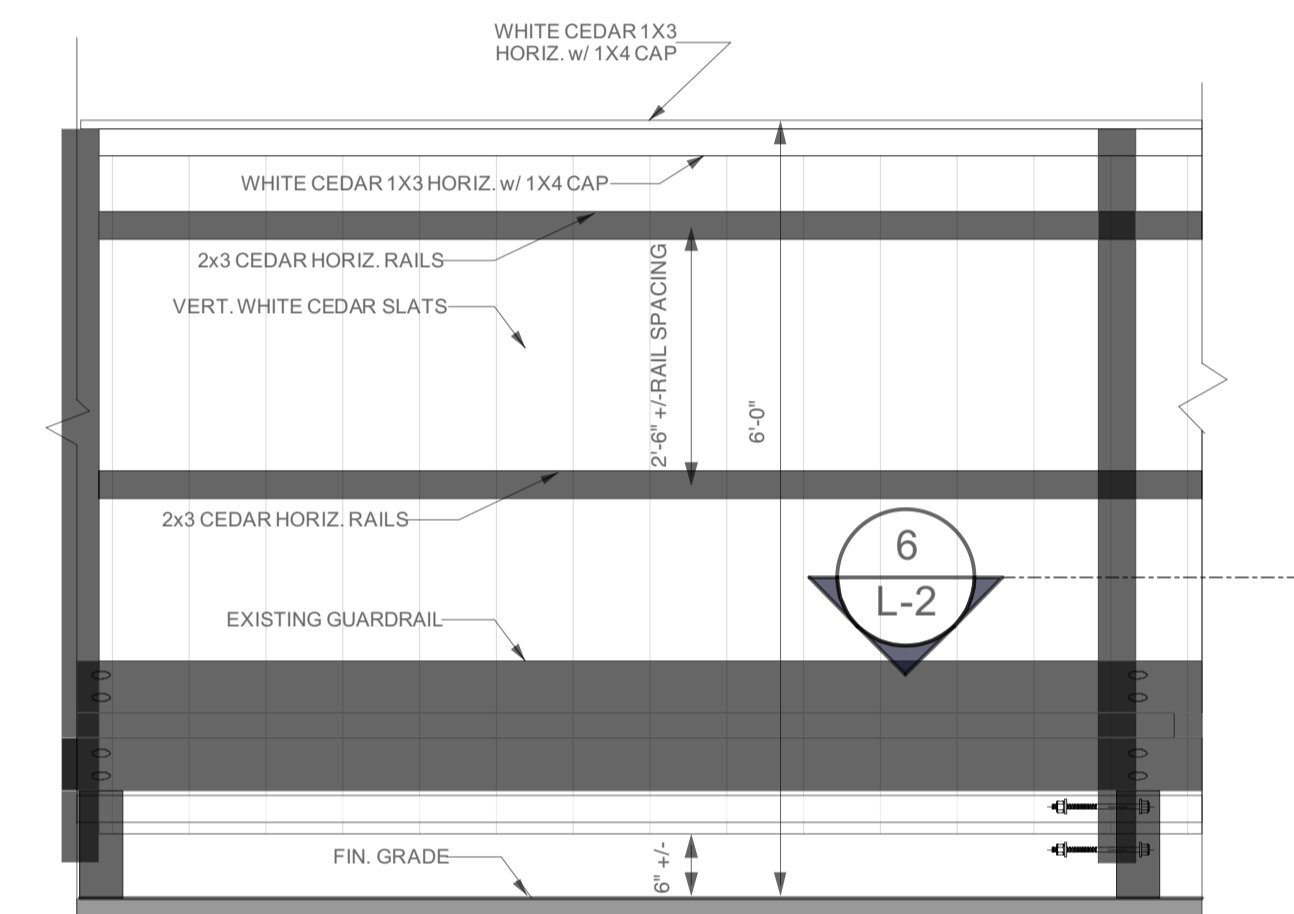
2 PLAN / SECTION WEATHERING STEEL PLANTER

NTS



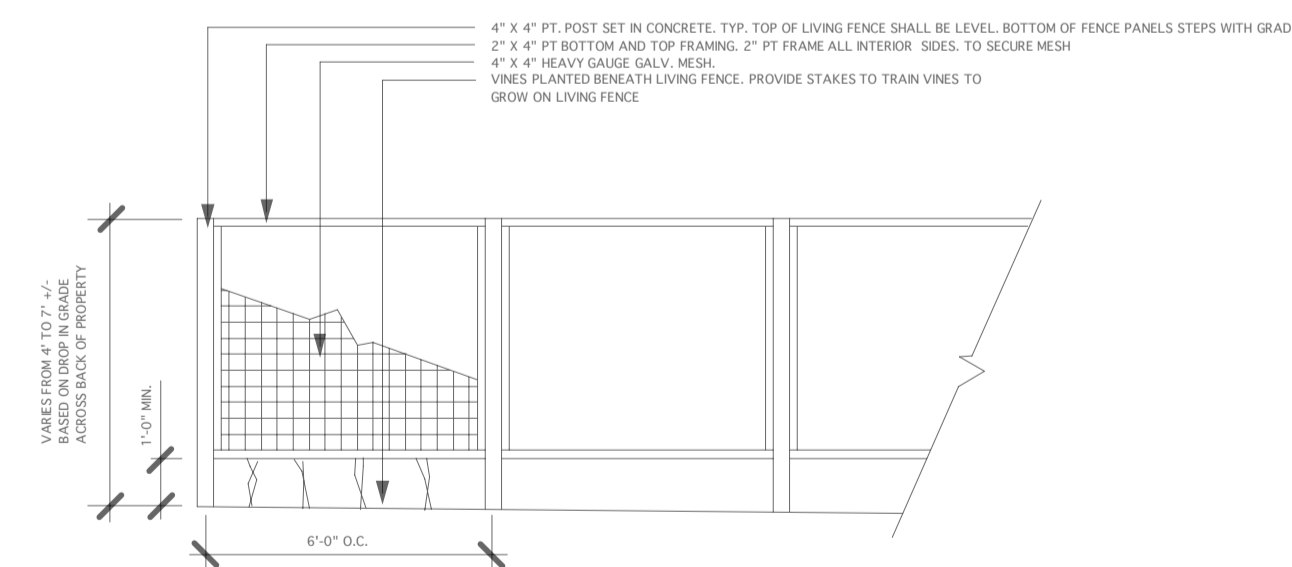
3 RAILING AT FRONT ENTRANCE WITH GRANITE STEPS

NTS



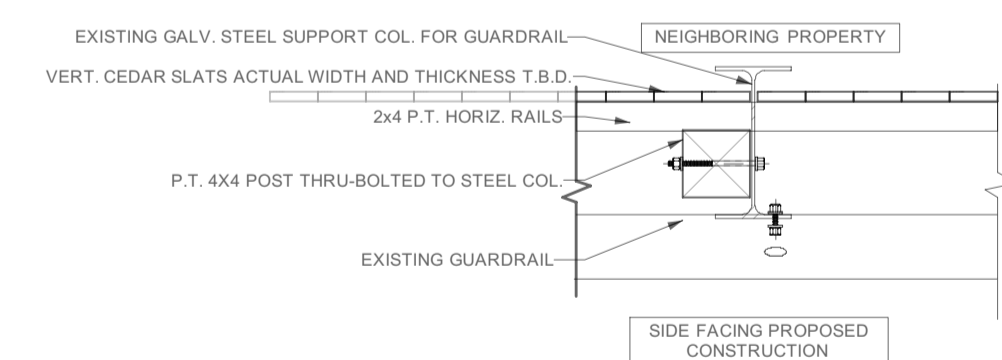
4 WHITE CEDAR FENCE / GUARDRAIL ELEVATION

NTS



5 LIVING FENCE ELEVATION

NTS



6 POST / WHITE CEDAR FENCE / GUARDRAIL SECTION

NTS

NOTE:

- LIVING FENCE SHALL BE 42" TALL MIN. FROM TOP OF GRADE ALONG NORTHERN EDGE OF PARKING
- PROVIDE STAKING ALONG LIVING FENCE TO ALLOW VINES TO GROW TO MESH PANELS.

NOTES:

- CALL DIGSAFE PRIOR TO ANY SITE WORK
- COORDINATE ALL DETAILS WITH CIVIL, ARCHITECTURE, AND OTHER PROJECT DRAWINGS
- SUBMIT SHOP DRAWINGS OF ALL DETAILS
- FIELD VERIFY ALL MEASUREMENTS PRIOR TO FABRICATION OF SITE DETAILS

Parris Terraces Development

60 Parris Street
Portland, Maine

Applicant:

Jack Soley; Horton, LLC
Box 411
100 Commercial Street, Suite 306
Portland, Maine
207-808-4714
jsoley@eastbrowncow.com

KAPLAN THOMPSON ARCHITECTS
102 EXCHANGE STREET
PORTLAND, ME 04101
207-842-2888
KAPLANTHOMPSON.COM

MRLD
Landscape Architecture + Urbanism

RANSOM
Consulting, Inc.

Civil Engineer
Ransom Consulting, Inc.
400 Commercial Street, Suite 404
Portland, Maine 04101
207-772-2891



LANDSCAPE DETAILS

2	CEDAR FENCE 6'	6.1.18
1		5.4.18

No.	Revision/Issue	Date
Design by:	MHR	Checked by: MHR
Drawn by:	MHR	Approved by: MHR
Project:	2017.35	
Sheet No:		

CITY OF PORTLAND
APPROVED SITE PLAN
Subject to Conditions of Approval
and Standard Conditions

DATE OF APPROVAL: 3/27/18
PLANNER: Nell Donaldson
PROJECT NO.: 2017-287