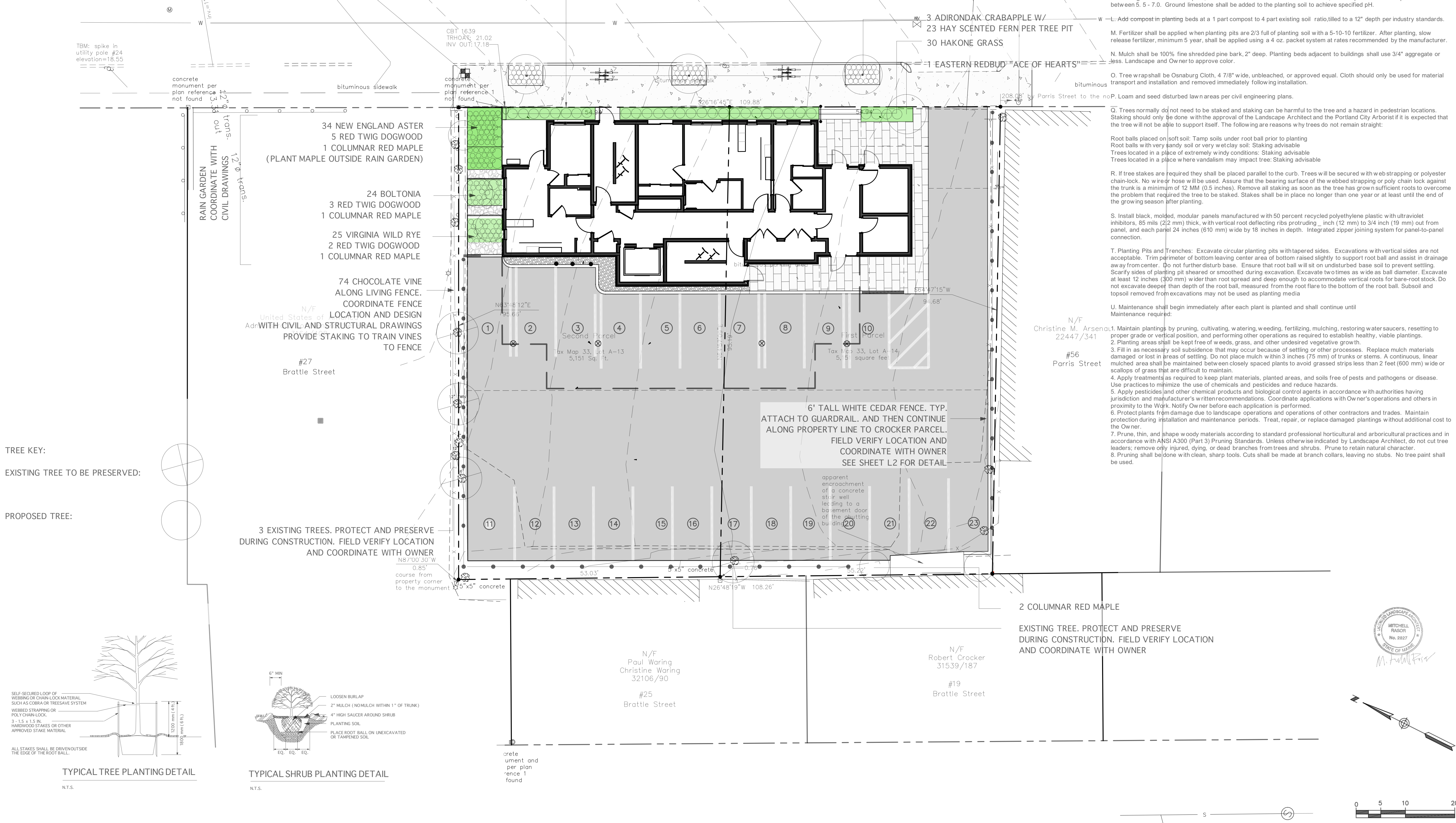


PLANT LIST: TREES, SHRUBS, GRASSES				
QUANTITY	BOTANICAL NAME	COMMON NAME	SIZE	REMARKS
5	Acer rubrum "Columnare"	Red Maple "Columnar"	4" Calp.	BB
34	Aster novae angliae	New England Aster	1GL	CONTAINER/1' O.C.
74	Akebia quinata	Chocolate Vine	2GL	CONTAINER/2' O.C.
24	Boltonia asteroides	Boltonia	1GL	CONTAINER/1' O.C.
1	Cercis canadensis "Ace of Hearts"	Eastern Redbud "Ace of Hearts"	4'	CONTAINER
10	Cornus sericea "Arctic Fire"	Red Twig Dogwood "Arctic Fire"	5'	CONTAINER/3' O.C./MULTI-STEM
69	Dennstaedtia punctilubula	Hayscented Fern	1GL	CONTAINER/1' O.C.
25	Elymus virginicus	Virginia Wild Rye	1GL	CONTAINER/1' O.C.
30	Hakonechloa macra	Hakone Grass	2GL	CONTAINER/1 O.C.
3	Malus "Adirondak"	Adirondak Crabapple	6' - 8'	CONTAINER OR BB

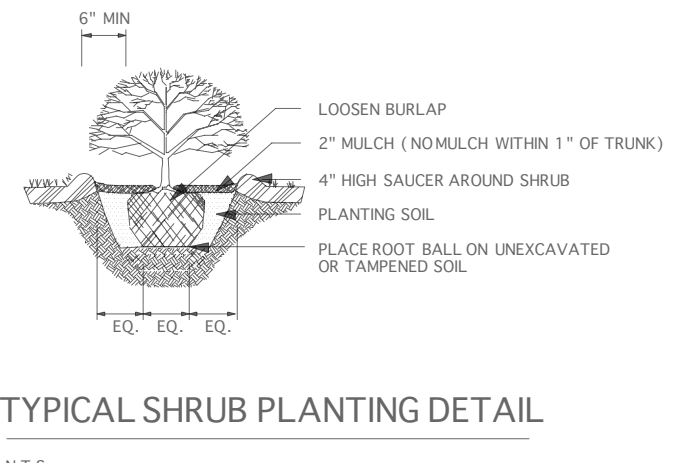
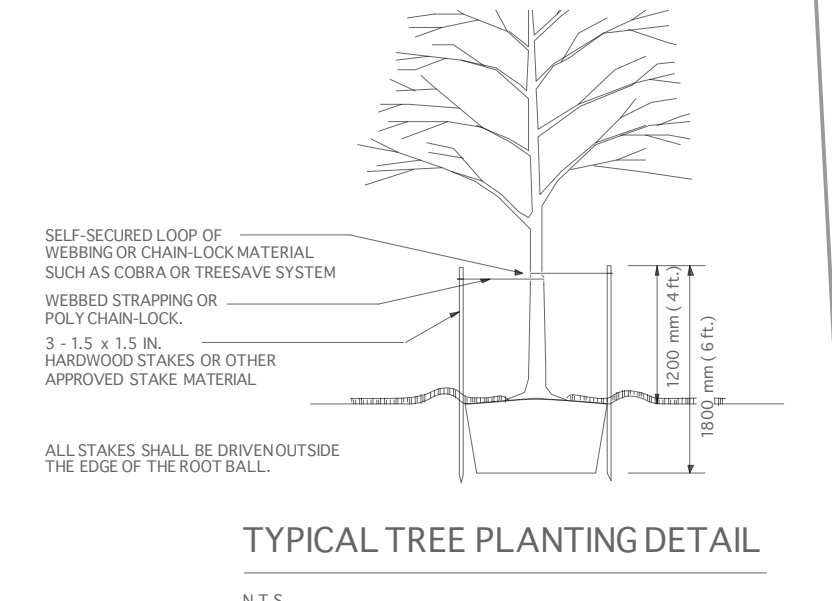
underground storm water detention vault

PLANTING SPECIFICATION

- A. Call Dig Safe prior to any excavation work. The location and maintenance of trees and landscaping cannot conflict with site utilities. Coordinate with other project drawings.
- B. In any case where drawings or specifications vary from the City of Portland Technical Manual Landscaping and Landscape Preservation Standards, City regulations take precedent. Report any discrepancies to Owner and Landscape Architect.
- C. The location of all trees and shrubs shall be staked and approved by the Landscape Architect prior to planting.
- D. Flag the northern side of trees in the nursery and install trees oriented to the north. Landscape Architect to select plant material with contractor.
- E. All plant material shall be healthy and full-branching, true to form and specified size, free of disease, pests and physical damage.
- F. Employ only experienced personnel familiar with required work.
- G. If deciduous trees are planted in - leaf, they shall be sprayed with an anti-desiccant prior to digging operation.
- H. Landscape installation timeframe:  
Balled and Burlapped:  
Spring 4/1 to 7/15, and Fall 8/15 to 10/15
- I. Specified plant material may be substituted by the use of alternate, similar plant material, with approval from the Landscape Architect.
- J. All plant material and lawn shall be guaranteed for a period of two years from date of occupancy. All dead and non-vigorous material shall be replaced, without cost to the Owner, with a similar species, and these replacement plants shall be guaranteed for one year from the date of acceptance by the Owner.
- K. Planting soil shall be 2/3 topsoil, free of debris and stones over 1" in diameter, and 1/3 peat moss. The pH shall be between 5.5 - 7.0. Ground limestone shall be added to the planting soil to achieve specified pH.
- L. Add compost in planting beds at a 1 part compost to 4 part existing soil ratio, tilled to a 12" depth per industry standards.
- M. Fertilizer shall be applied when planting pits are 2/3 full of planting soil with a 5-10-10 fertilizer. After planting, slow release fertilizer, minimum 5 year, shall be applied using a 4 oz. packet system at rates recommended by the manufacturer.
- N. Mulch shall be 100% fine shredded pine bark, 2" deep. Planting beds adjacent to buildings shall use 3/4" aggregate or less. Landscape and Owner to approve color.
- O. Tree wrap shall be Osnaburg Cloth, 4 7/8" wide, unbleached, or approved equal. Cloth should only be used for material transport and installation and removed immediately following installation.
- P. Loam and seed disturbed lawn areas per civil engineering plans.
- Q. Trees normally do not need to be staked and staking can be harmful to the tree and a hazard in pedestrian locations. Staking should only be done with the approval of the Landscape Architect and the Portland City Arborist if it is expected that the tree will not be able to support itself. The following are reasons why trees do not remain straight:  
Root balls placed on soft soil: Tamp soils under root ball prior to planting  
Root balls with very sandy soil or very wet clay soil: Staking advisable  
Trees located in a place of extremely windy conditions: Staking advisable  
Trees located in a place where vandalism may impact tree: Staking advisable
- R. If free stakes are required they shall be placed parallel to the curb. Trees will be secured with web strapping or polyester chain-lock. No wire or hose will be used. Assume that the bearing surface of the webbed strapping or poly chain lock against the trunk is a minimum of 12 MM (0.5 inches). Remove all staking as soon as the tree has grown sufficient roots to overcome the problem that required the tree to be staked. Stakes shall be in place no longer than one year or at least until the end of the growing season after planting.
- S. Install black, molded, modular panels manufactured with 50 percent recycled polyethylene plastic with ultraviolet inhibitors, 85 mils (2.2 mm) thick, with vertical root deflecting ribs protruding 1/2 inch (12 mm) to 3/4 inch (19 mm) out from panel, and each panel 24 inches (610 mm) wide by 16 inches in depth. Integrated zipper joining system for panel-to-panel connection.
- T. Planting Pits and Trenches: Excavate circular planting pits with tapered sides. Excavations with vertical sides are not acceptable. Trim perimeter of bottom leaving center area of bottom raised slightly to support root ball and assist in drainage away from center. Do not further disturb base. Ensure that root ball will sit on undisturbed base soil to prevent settling. Scarify sides of planting pit sheared or smoothed during excavation. Excavate two times as wide as ball diameter. Excavate at least 12 inches (300 mm) wider than root spread and deep enough to accommodate vertical roots for bare-root stock. Do not excavate deeper than depth of the root ball, measured from the root flare to the bottom of the root ball. Subsoil and topsoil removed from excavations may not be used as planting media
- U. Maintenance shall begin immediately after each plant is planted and shall continue until Maintenance required:



TREE KEY:  
EXISTING TREE TO BE PRESERVED:  
PROPOSED TREE:



**Parris Terraces Development**  
60 Parris Street  
Portland, Maine

**Applicant:**  
Jack Soley; Horton, LLC  
Box 411  
100 Commercial Street, Suite 306  
Portland, Maine  
207-808-4714  
jsoley@eastbrowncow.com



**MRLD**  
Landscape Architecture + Urbanism

**RANSOM Consulting, Inc.**  
Civil Engineer  
Ransom Consulting, Inc.  
400 Commercial Street, Suite 404  
Portland, Maine 04101  
207-772-2891



LANDSCAPE PLAN

2	ADJUSTED HEIGHT OF CEDAR FENCE	5.8.18
1		5.1.18
No.	Revision/Issue	Date
Design by:	MHR	Checked by: MHR
Drawn by:	MHR	Approved by: MHR
Project:	2017.35	
Sheet No:		

CITY OF PORTLAND APPROVED SITE PLAN  
Subject to Conditions of Approval and Standard Conditions  
DATE OF APPROVAL: 3/27/18  
PLANNER: Neil Donaldson  
PROJECT NO: 2017-287

FOR PERMITTING

P:\2017\171-06098\08\_Parris\Drawings\Working Drawings\Parris03-Ransom-Working.dwg, Ransom, Mar 14, 2018 - 10:47am