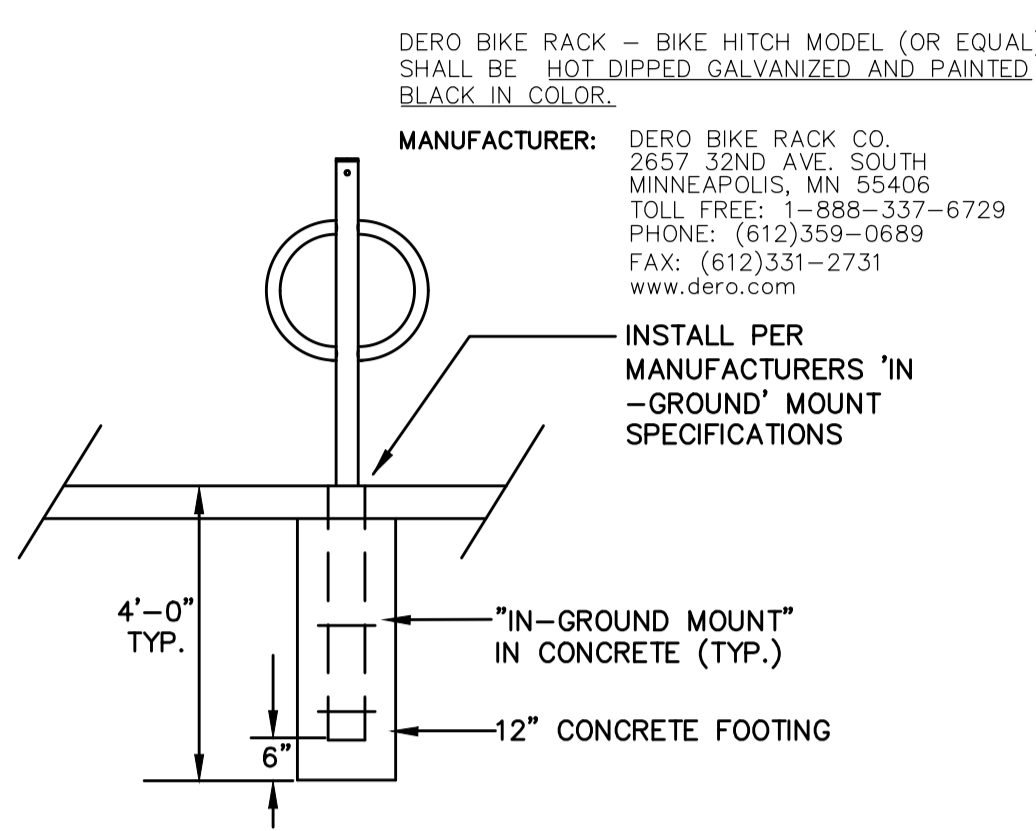


- NOTES:
1. INSTALL SILTSACK PER MANUFACTURER'S RECOMMENDATIONS.
 2. SILTSACKS SHALL BE CHECKED FOR SEDIMENT LEVEL AND OVERALL CONDITION IMMEDIATELY AFTER EVERY RAIN EVENT AND AT LEAST EVERY DAY DURING PROLONGED RAINFALL.
 3. SEDIMENT SHALL BE REMOVED WHEN THE SEDIMENT HAS ACCUMULATED TO 1/2 THE DESIGN DEPTH OF THE SILTSACK. REMOVED SEDIMENT SHALL BE DEPOSITED IN A SUITABLE AREA AND IN SUCH A MANNER THAT WILL NOT ERODE.
 4. SEDIMENT SHALL ONLY BE REMOVED BY REMOVING THE SILTSACKS FROM THE CATCH BASINS ACCORDING TO MANUFACTURER RECOMMENDATIONS.
 5. CARE SHALL BE TAKEN TO AVOID SPILLING SEDIMENT WHILE REMOVING THE SILTSACK.
 6. ANY DAMAGED SILTSACK SHALL BE REPLACED WITH A NEW SILTSACK.

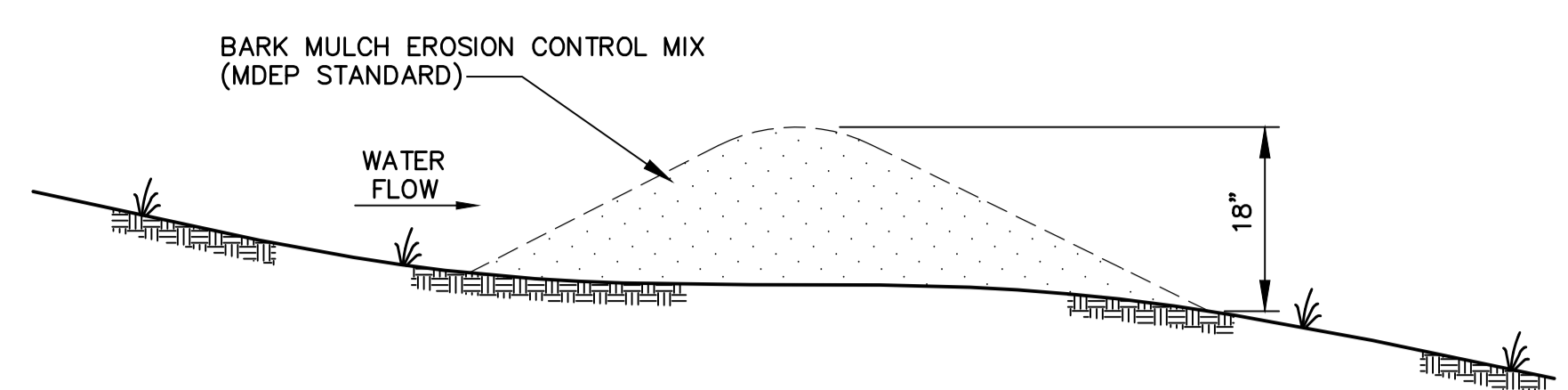
INLET PROTECTION - SILT SACK

NOT TO SCALE



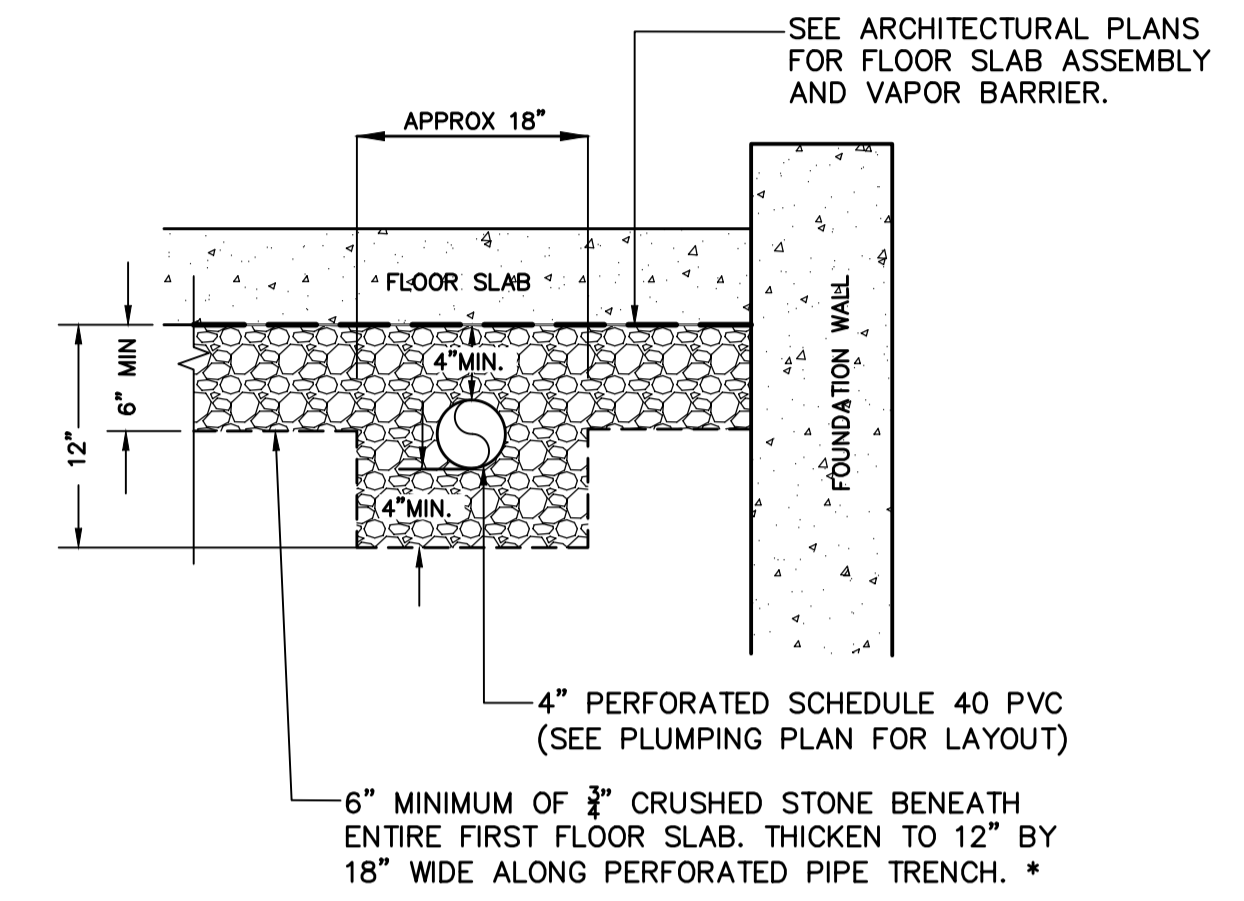
BIKE RACK DETAIL

NOT TO SCALE



MULCH BERM DETAIL

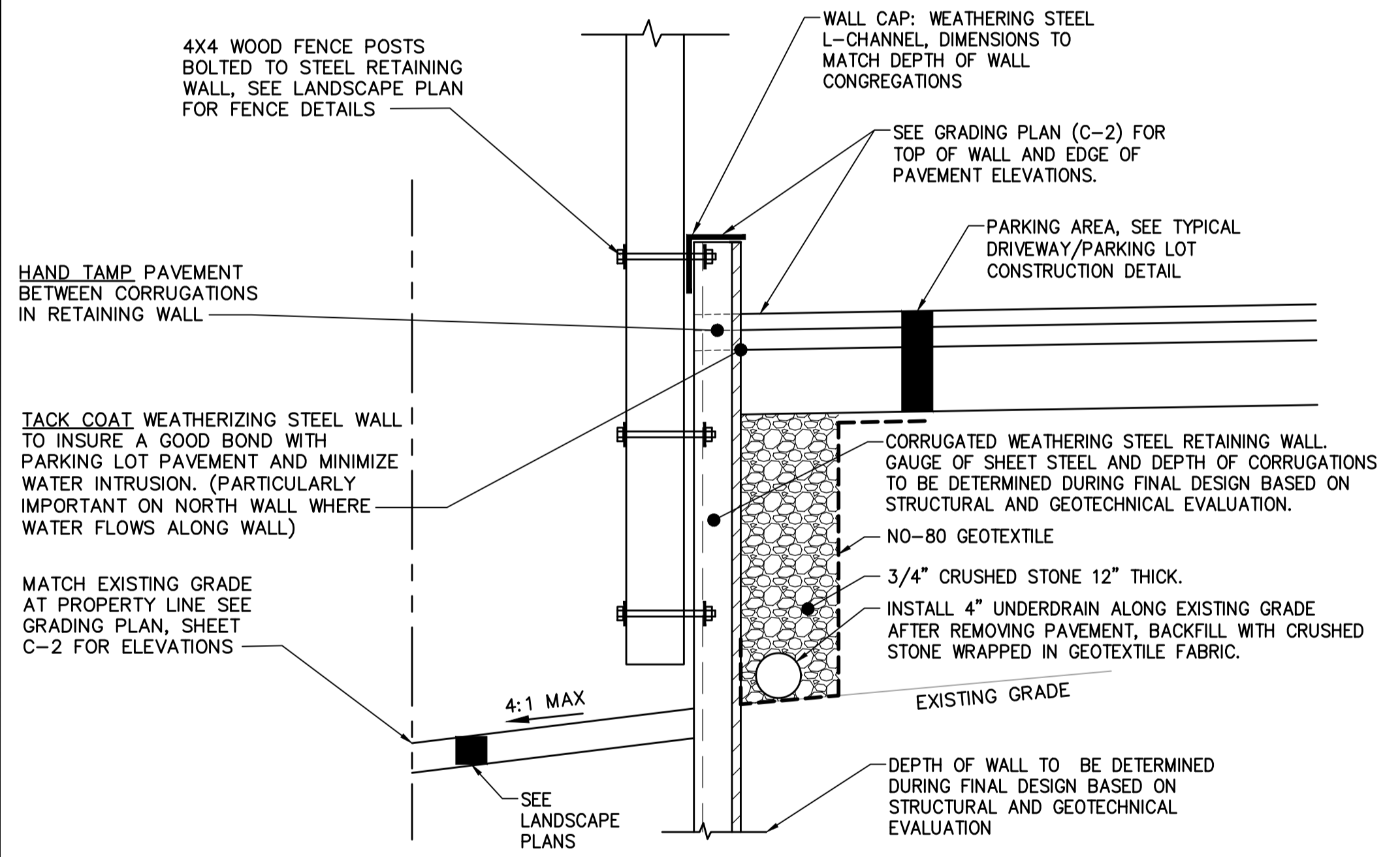
NOT TO SCALE



- * 12" STRUCTURAL FILL (TOTAL) IS REQUIRED BENEATH FIRST FLOOR SLAB. THE TOP 6" MUST BE CRUSHED STONE FOR VENTING (AS SHOWN). THE BOTTOM 6" (NOT SHOWN) CAN BE EITHER CRUSHED STONE OR MDOT TYPE D 703.06 (MODIFIED TO 3" MINUS). SEE GEOTECHNICAL REPORT AND STRUCTURAL AND ARCHITECTURAL DRAWINGS.

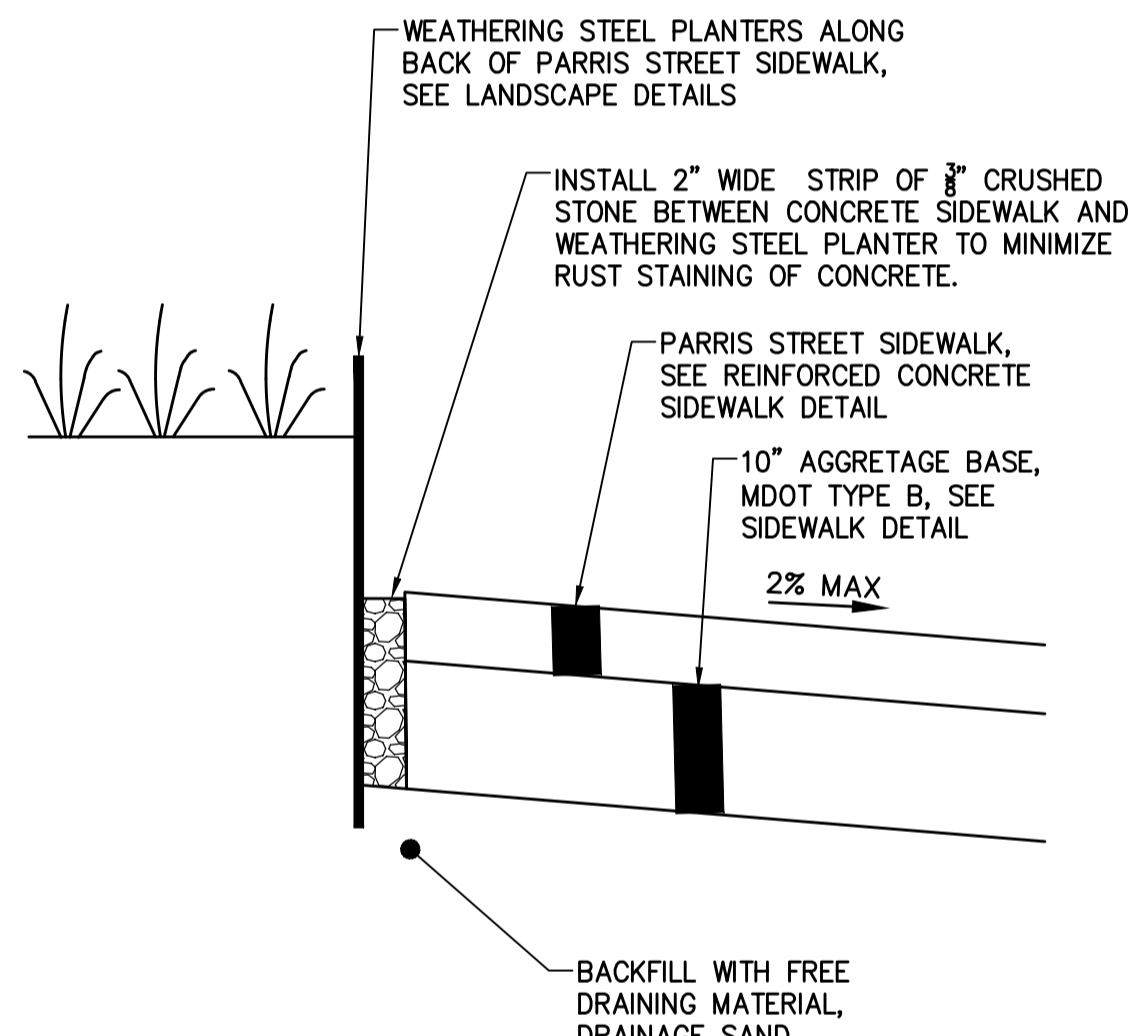
SUB-SLAB PERFORATED VENT PIPE DETAIL

NOT TO SCALE



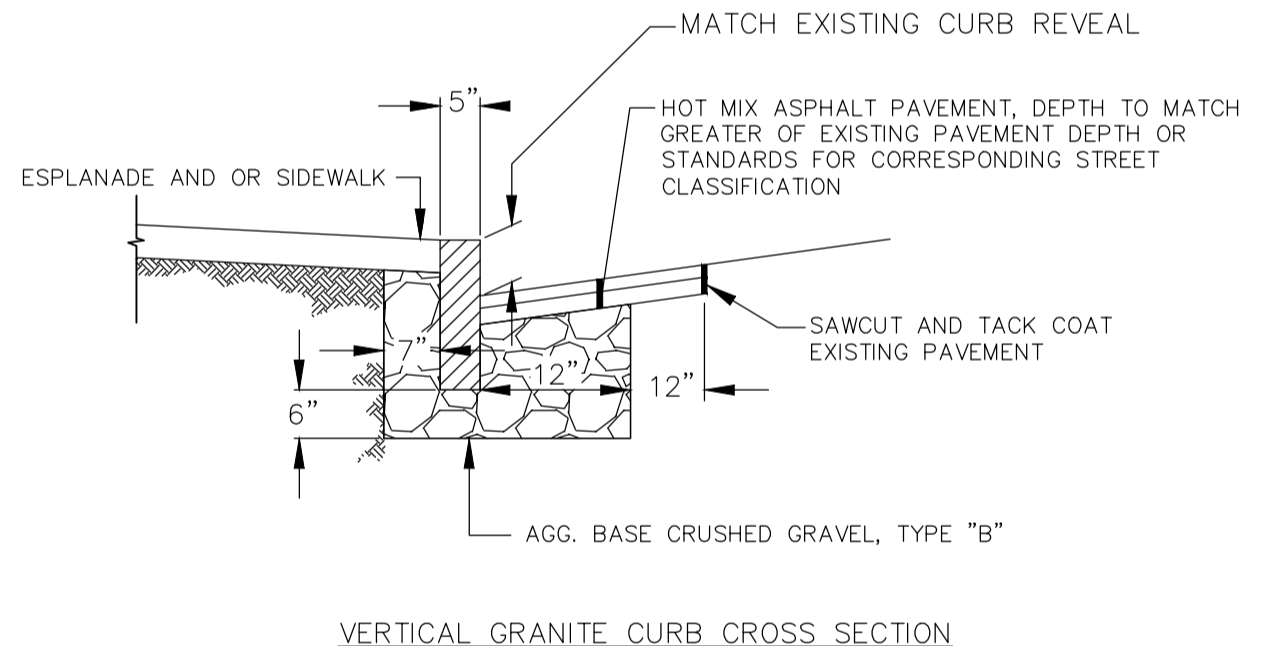
WEATHERING STEEL RETAINING WALL, SCHEMATIC DETAIL

NOT TO SCALE



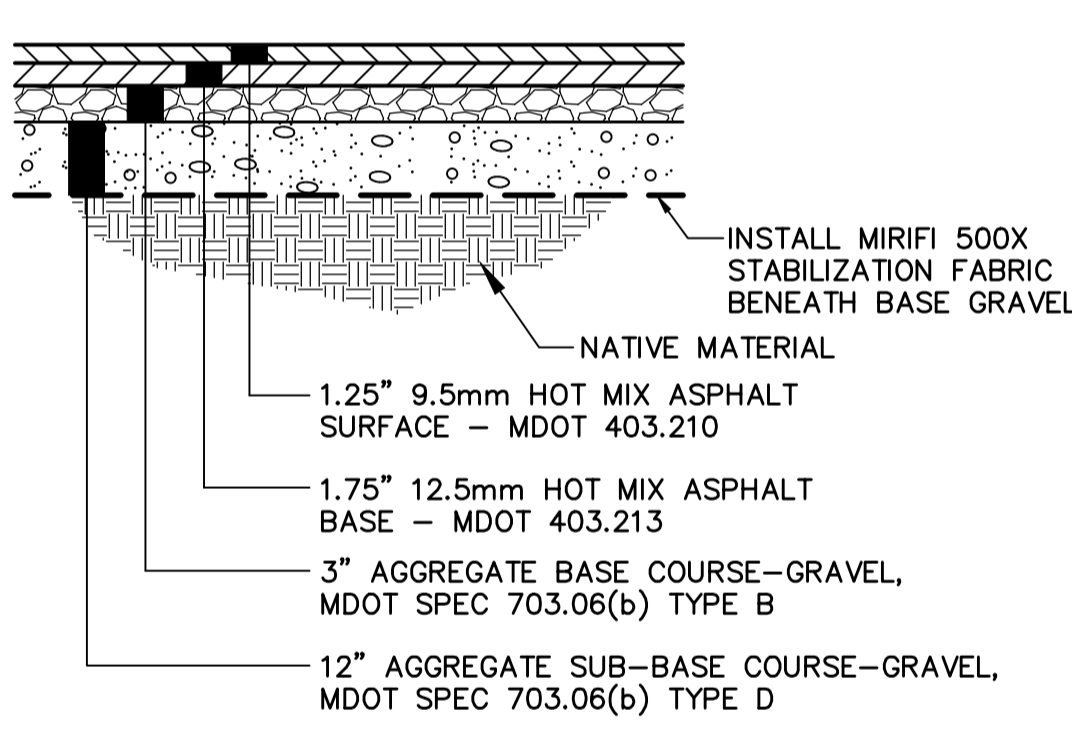
DRAINAGE STRIP DETAIL FOR WEATHERING STEEL PLANTER

NOT TO SCALE



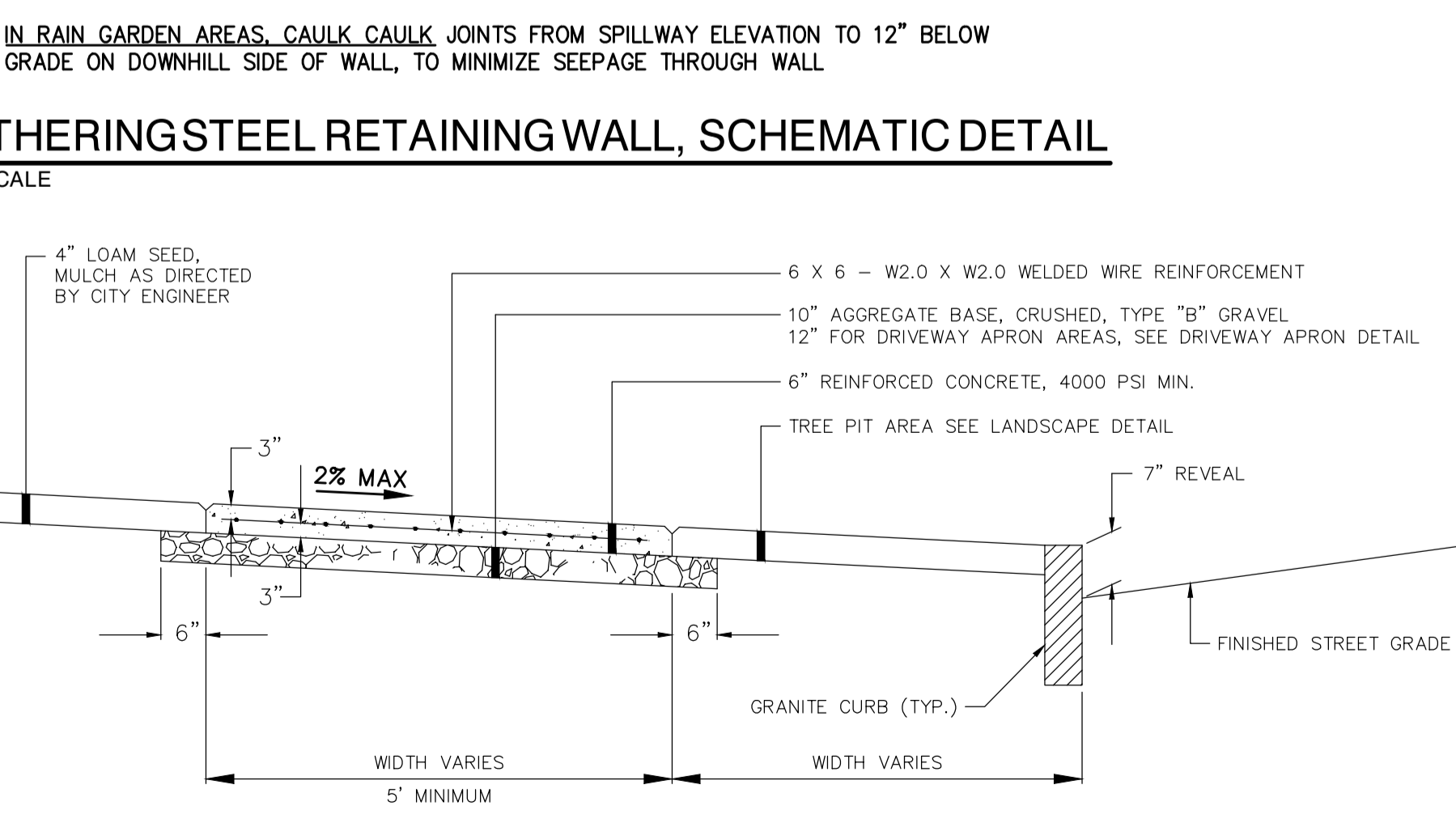
VERTICAL GRANITE CURB INSTALLATION IN EXISTING STREETS

NOT TO SCALE



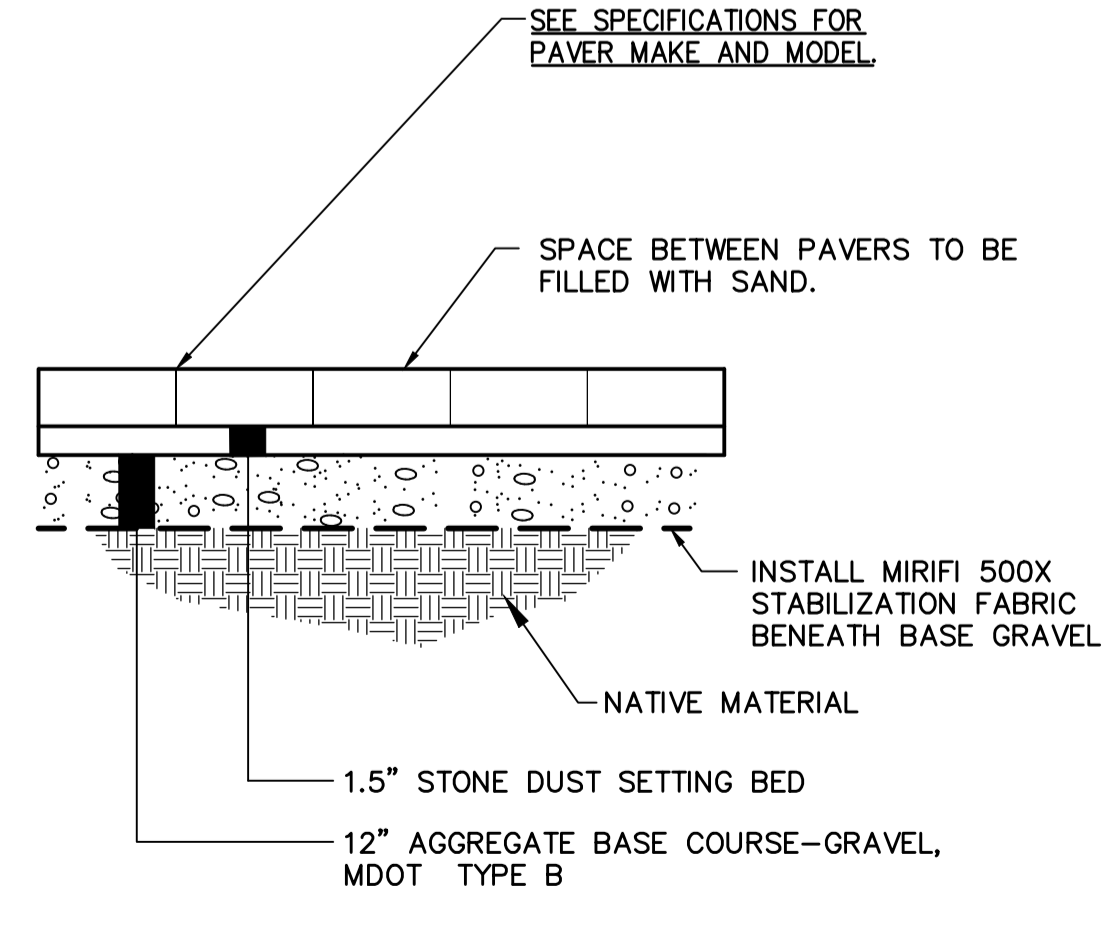
TYPICAL DRIVEWAY/PARKING LOT OUTSIDE OF RIGHT OF WAY

NOT TO SCALE



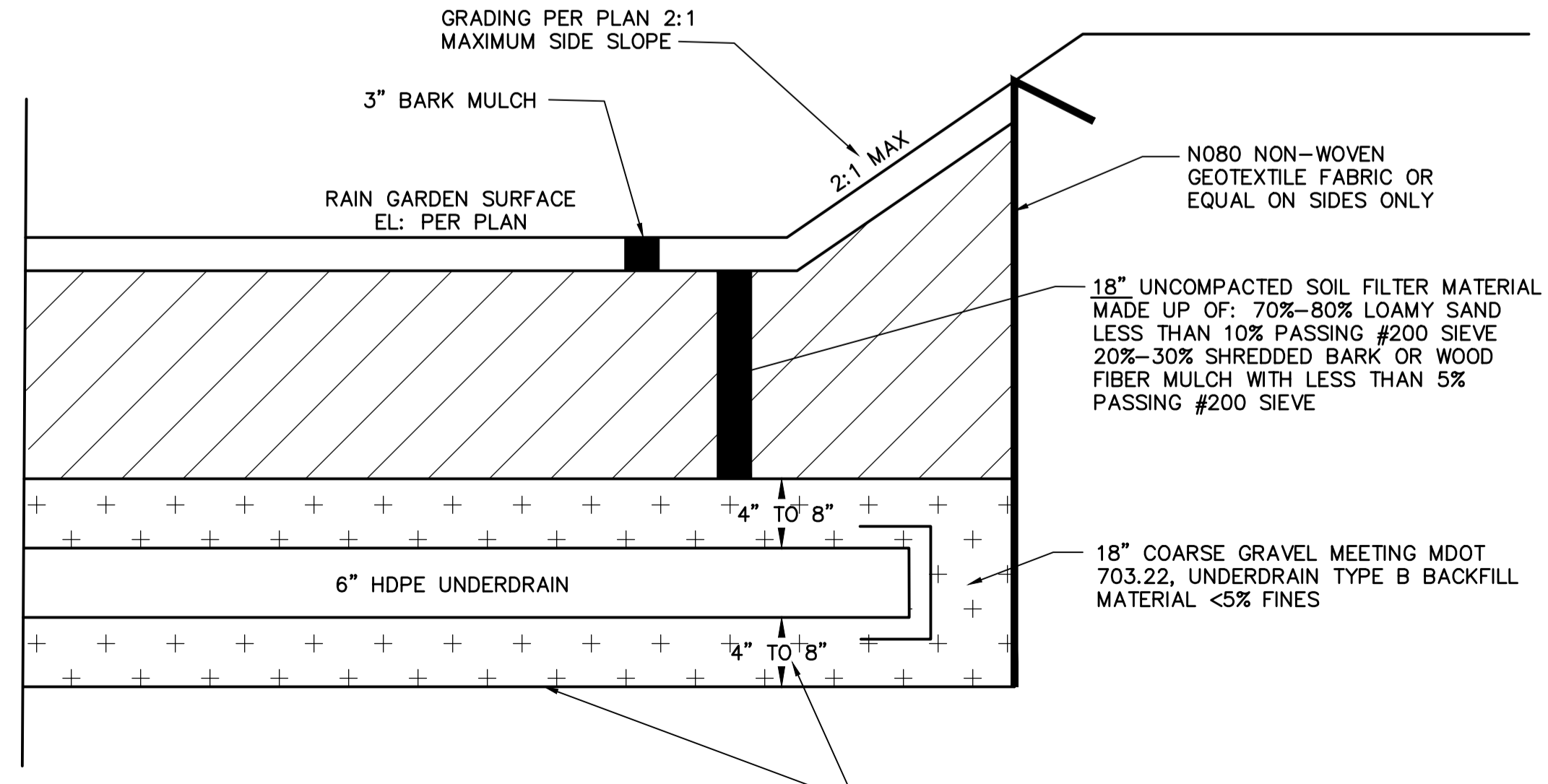
REINFORCED CONCRETE SIDEWALK

NOT TO SCALE



CONCRETE PAVER DETAIL

NOT TO SCALE



ORNAMENTAL RAIN GARDEN DETAIL

NOT TO SCALE

Parris Terraces Development

60 Parris Street
Portland, Maine

Applicant:

Jack Soley; Horton, LLC
Box 411
100 Commercial Street, Suite 306
Portland, Maine
207-808-4714
jsoley@eastbrownco.com

Consultants:

KAPLAN THOMPSON ARCHITECTS
102 EXCHANGE STREET
PORTLAND, ME 04101
207.843.2888
KAPLANTHOMPSON.COM

MRLD
Landscape Architecture + Urbanism

RANSOM Consulting, Inc.
Civil Engineer
Ransom Consulting, Inc.
400 Commercial Street, Suite 404
Portland, Maine 04101
207-772-2891

CIVIL DETAILS

No.	Revision/Issue	Date
D	CONSTRUCTION	5/23/18
C	PERMITTING	3/20/18
B	PERMITTING	3/13/18
A	PERMITTING/PRICING	2/8/18

Design by:	Checked by:
JIM	SJB
Drawn by:	Approved by:
TGN	SJB

Project: 171.06098
Sheet No:

CITY OF PORTLAND APPROVED SITE PLAN
Subject to Conditions of Approval and Standard Conditions
DATE OF APPROVAL: 3/27/18
PLANNER: Neil Donaldson
PROJECT NO. 2017-287

FOR CONSTRUCTION

P:\2017\171.06098\06_Paris\01\Drawings\Working Drawings\Parris-Terraces-Ransom-Working.dwg C-4 May 23, 2018 - 5:35pm