

PROJECT:
PARRIS TERRACES

60 PARRIS ST.
PORTLAND, ME 04101

OWNER REP :
Donald M Peterson, Inc.
1 Avon Road
Cape Elizabeth, ME 04107
p: 207-415-0707

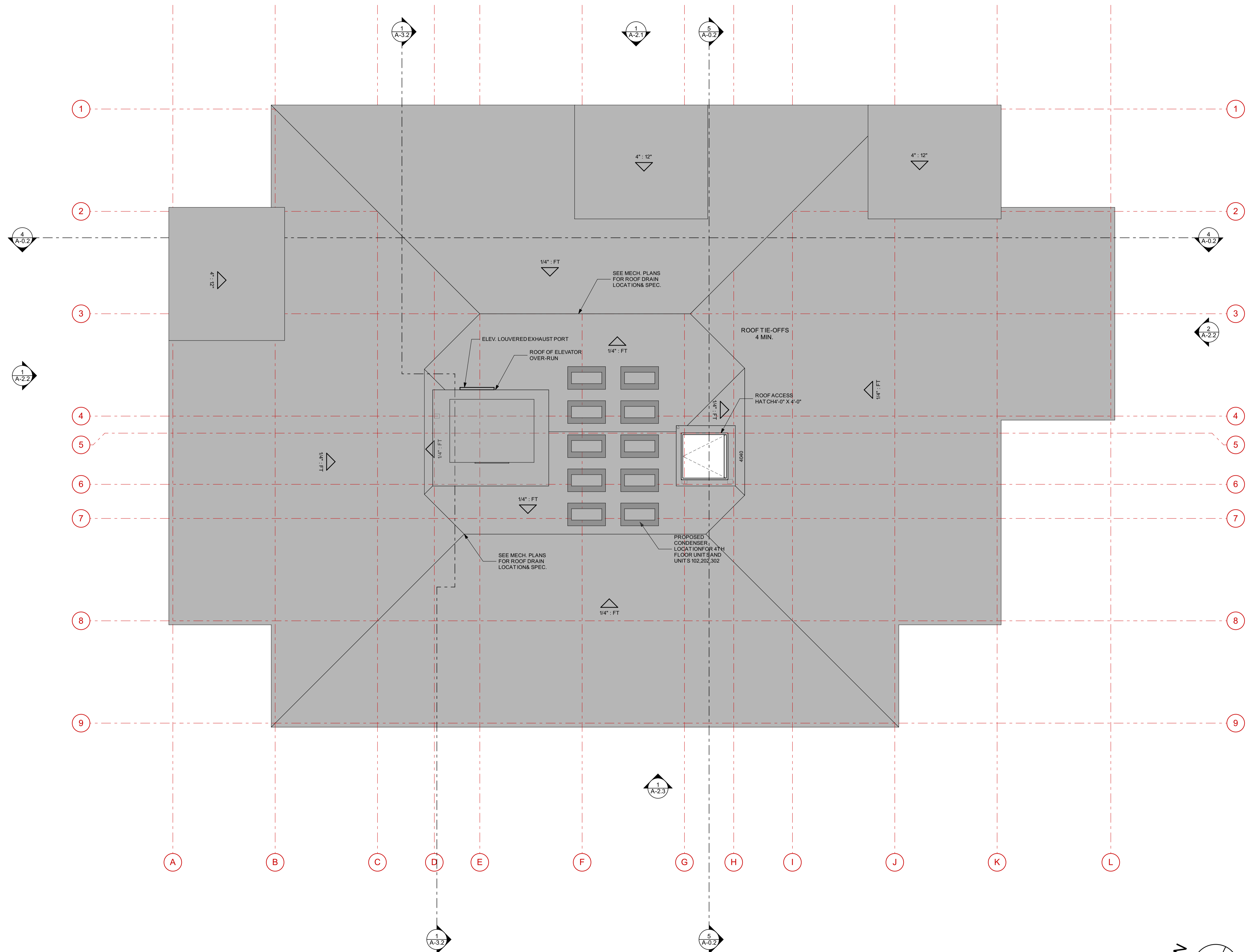
STRUCTURAL :
Structural Integrity
46 Forrest Avenue
Portland, ME 04101
p: 207-774-4614
f: 866-793-7835

CIVIL :
Ransom Consulting Engineers and Scientists
400 Commercial Street, Suite 404
Portland, ME 04101
p: 207 772-2891

LANDSCAPE :
MRLD Landscape Architecture + Urbanism
87 Main Street
Yarmouth, ME 04096
p: 207 846-4966

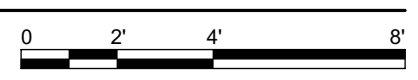
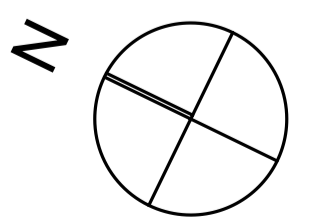
MECHANICAL :
Ripcord Engineering
PO Box 4175
Portland, ME 04101
p: 207 835-4060

ELECTRICAL :
Swiftcurrent Engineering
10 Forest Falls Drive, Unit 4B
Yarmouth, ME 04096
p: 207 847-9280



1 2ND - 4TH FLOOR PLAN

SCALE: 1/4" = 1'-0"



NOT FOR CONSTRUCTION

PROJECT NO:	PRS
DATE:	03/13/2018
REVISED 1:	
REVISED 2:	
DRAWN BY:	JT/AW
PHASE:	DESIGN DEVELOPMENT

ROOF PLAN



APPROVED 3/27/18
PROJECT NO. 2017-287