

Parris Terraces Development

60 Parris Street
Portland, Maine

Applicant:

Jack Soley; Horton, LLC
PO Box 411
100 Commercial Street, Suite 306
Portland, Maine
207-775-2252
jsoley@eastbrowncow.com

Owner's Representative:

Greg Shinberg; Shinberg Consulting
477 Congress Street, Suite 1012
Portland, Maine
207-772-7070
gls@shinbergconsulting.com

KAPLAN THOMPSON ARCHITECTS

102 EXCHANGE STREET
PORTLAND, ME 04101
207-842-2888
KAPLANTHOMPSON.COM

MRLD Landscape Architecture + Urbanism

RANSOM Consulting, Inc.

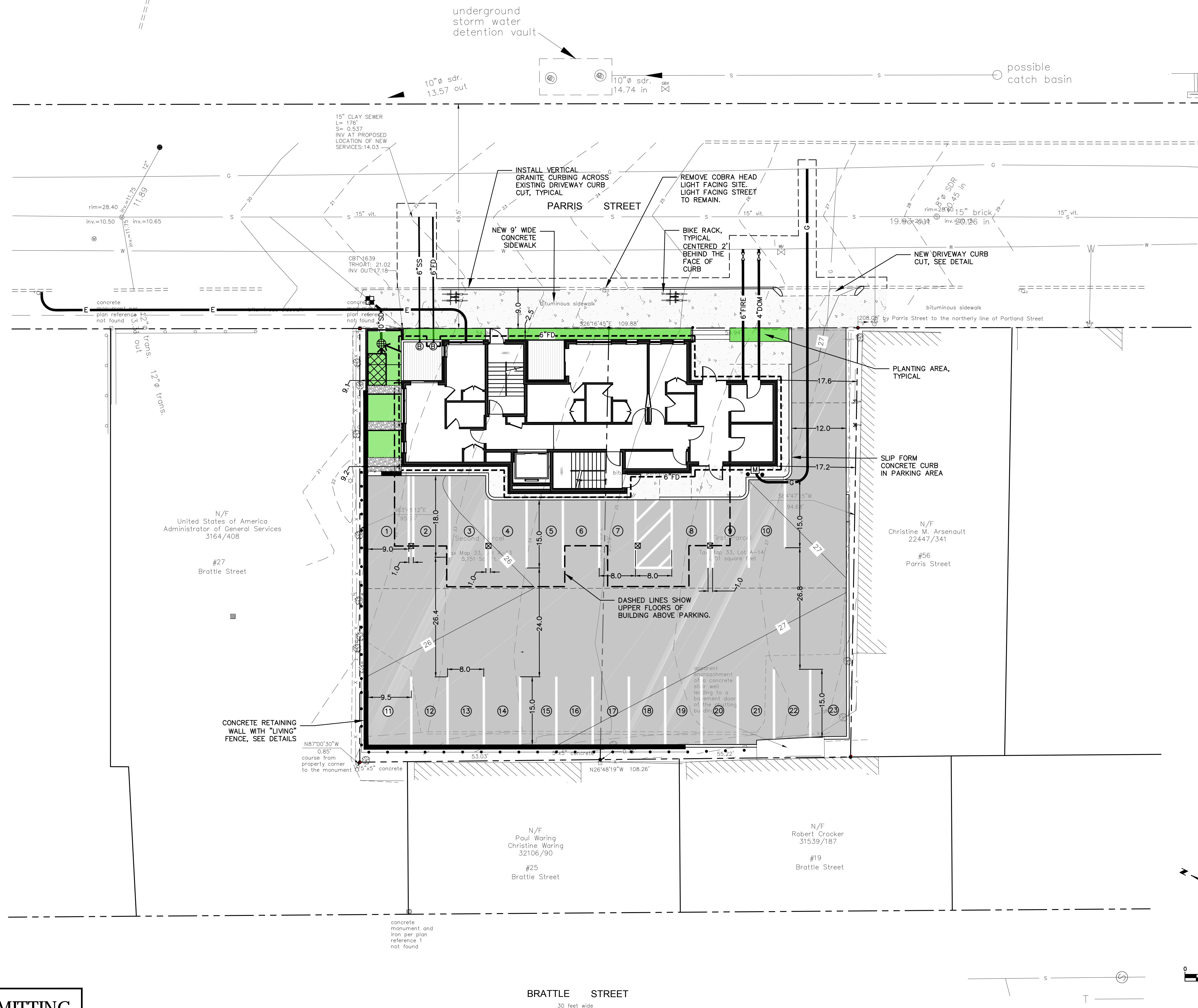
Civil Engineer
Ransom Consulting, Inc.
400 Commercial Street, Suite 404
Portland, Maine 04101
207-772-2891



SITE PLAN

A	PERMITTING	12/13/17
No.	Revision/Issue	Date
Design by:	JIM	Checked by: SJB
Drawn by:	TGN	Approved by: SJB
Project:	171.06098	2017-11-17

Sheet No: **C-1**



FOR PERMITTING