

PROJECT:
PARRIS TERRACES

60 PARRIS ST.
PORTLAND, ME 04101

OWNER REP :
Shinberg Consulting, LLC
477 Congress Street, Suite 1012
Portland, ME 04101
p: 207-772-7070
f: 207-772-7080

STRUCTURAL :
Structural Integrity
46 Forrest Avenue
Portland, ME 04101
p: 207-774-4614
f: 866-793-7835

CIVIL :
Ransom Consulting Engineers and Scientists
400 Commercial Street, Suite 404
Portland, ME 04101
p: 207 772-2891

LANDSCAPE :
MRLD Landscape Architecture + Urbanism
87 Main Street
Yarmouth, ME 04096
p: 207 846-4966

MECHANICAL :
Ripcord Engineering
PO Box 4175
Portland, ME 04101
p: 207 331-7900

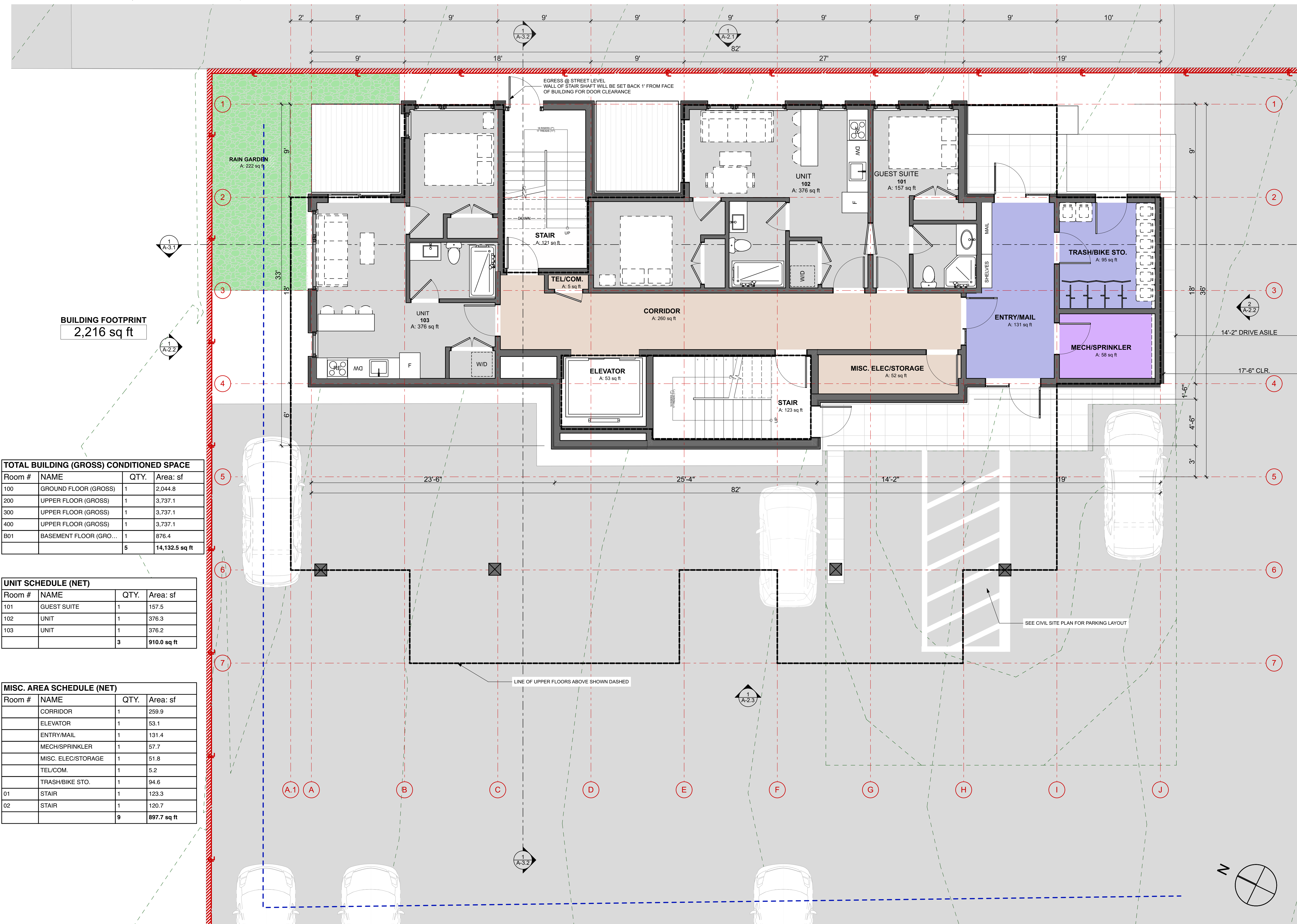
ELECTRICAL :
Swiftcurrent Engineering
10 Forest Falls Drive, Unit 18
Yarmouth, ME 04096
p: 207 331-7900

DATE	CHANGE NAME	DESCRIPTION
12/13/17		PLANNING BOARD SUBMISSION

NOT FOR CONSTRUCTION
PROJECT NO: PRS
DATE: 12/13/2017
REVISED 1:
REVISED 2:
DRAWN BY: JT/AW
PHASE: SCHEMATIC DESIGN

GROUND FLOOR PLAN

A-1.1



BUILDING FOOTPRINT
2,216 sq ft

TOTAL BUILDING (GROSS) CONDITIONED SPACE

Room #	NAME	QTY.	Area: sf
100	GROUND FLOOR (GROSS)	1	2,044.8
200	UPPER FLOOR (GROSS)	1	3,737.1
300	UPPER FLOOR (GROSS)	1	3,737.1
400	UPPER FLOOR (GROSS)	1	3,737.1
B01	BASEMENT FLOOR (GRO...)	1	876.4
		5	14,132.5 sq ft

UNIT SCHEDULE (NET)

Room #	NAME	QTY.	Area: sf
101	GUEST SUITE	1	157.5
102	UNIT	1	376.3
103	UNIT	1	376.2
		3	910.0 sq ft

MISC. AREA SCHEDULE (NET)

Room #	NAME	QTY.	Area: sf
	CORRIDOR	1	259.9
	ELEVATOR	1	53.1
	ENTRY/MAIL	1	131.4
	MECH/SPRINKLER	1	57.7
	MISC. ELEC/STORAGE	1	51.8
	TEL/COM.	1	5.2
	TRASH/BIKE STO.	1	94.6
01	STAIR	1	123.3
02	STAIR	1	120.7
		9	897.7 sq ft

1 GROUND FLOOR PLAN
SCALE: 1/4" = 1'-0"

