

PROJECT:
PARRIS TERRACES

60 PARRIS ST.
PORTLAND, ME 04101

OWNER REP :
Shinberg Consulting, LLC
477 Congress Street, Suite 1012
Portland, ME 04101
p: 207-772-7070
f: 207-772-7080

STRUCTURAL :
Structural Integrity
46 Forrest Avenue
Portland, ME 04101
p: 207-774-4614
f: 866-793-7835

CIVIL :
**Ransom Consulting
Engineers and Scientists**
400 Commercial Street, Suite 404
Portland, ME 04101
p: 207 772-2891

LANDSCAPE :
**MRLD Landscape
Architecture + Urbanism**
87 Main Street
Yarmouth, ME 04096
p: 207 846-4966

MECHANICAL :
Ripcord Engineering
PO Box 4175
Portland, ME 04101
p: 207 331-7900

ELECTRICAL :
Swiftcurrent Engineering
10 Forest Falls Drive, Unit 18
Yarmouth, ME 04096
p: 207 331-7900

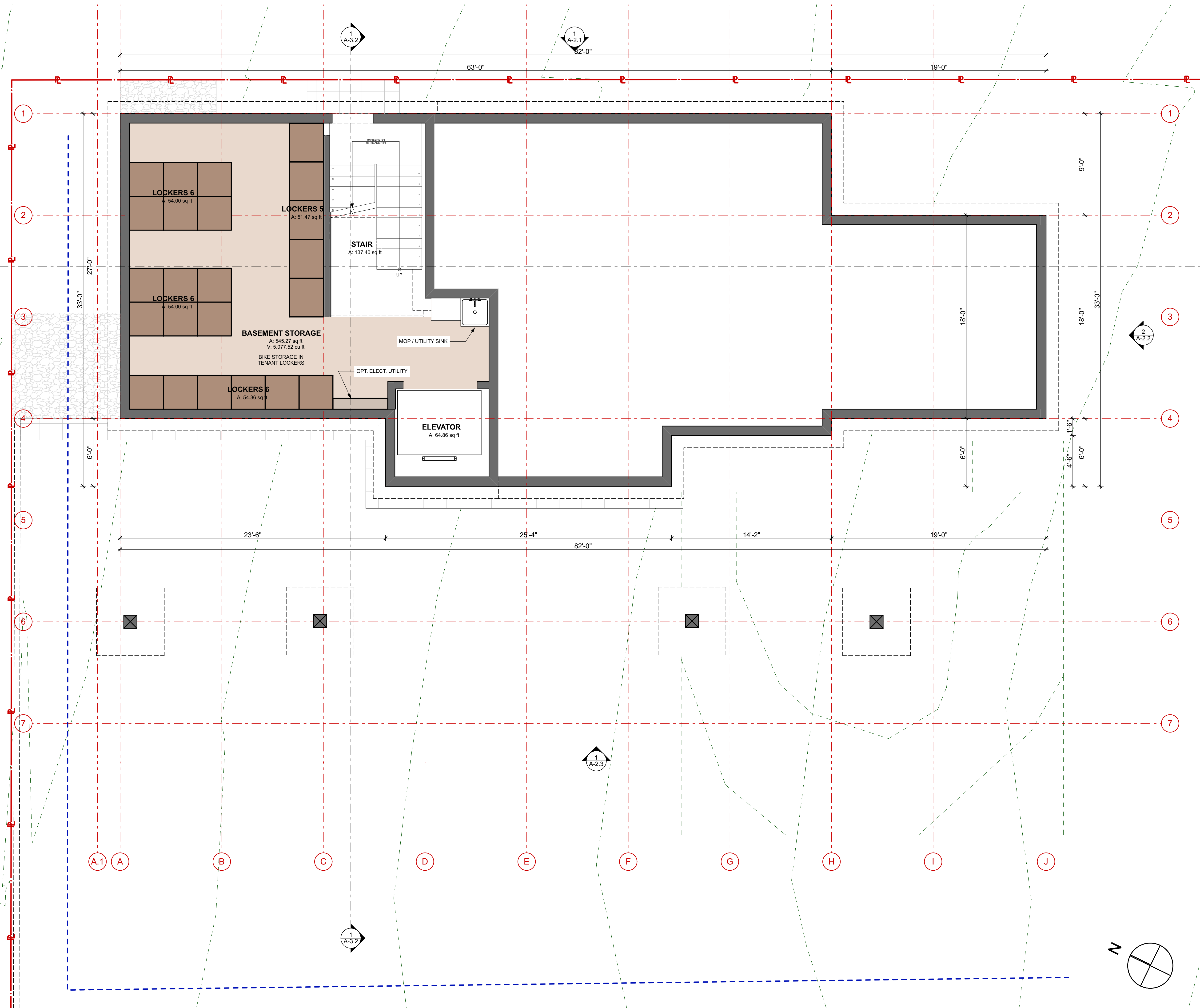
ISSUE NO.	DESCRIPTION	CHD ID	CHANGE NAME	DATE
1	PLANNING BOARD SUBMISSION			12/13/17

NOT FOR CONSTRUCTION

PROJECT NO:	PRS
DATE:	12/13/2017
REVISED 1:	
REVISED 2:	
DRAWN BY:	JT/AW
PHASE:	SCHEMATIC DESIGN

BASEMENT PLAN

A-1.0



1 BASEMENT PLAN
SCALE: 1/4" = 1'-0"

