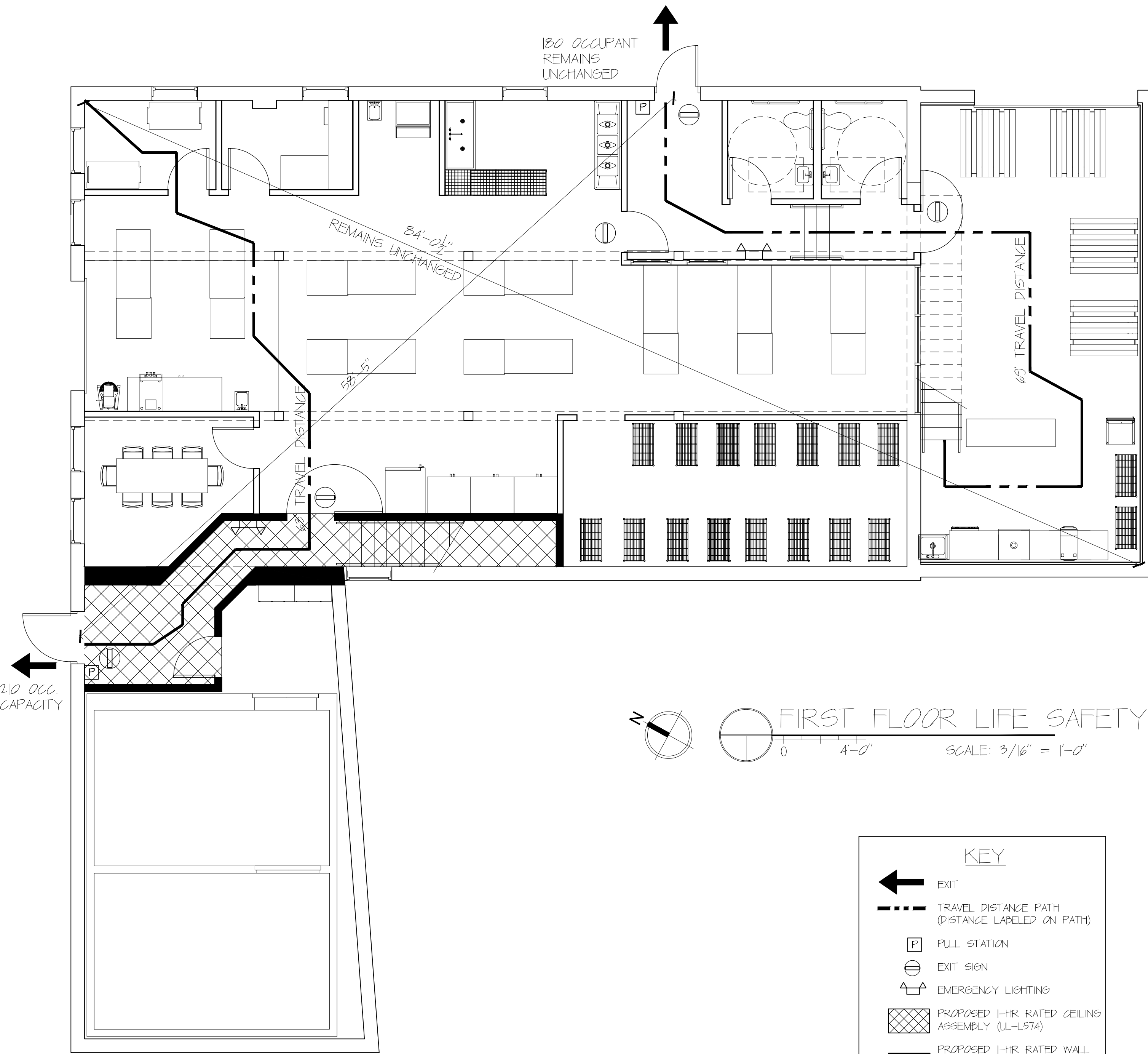
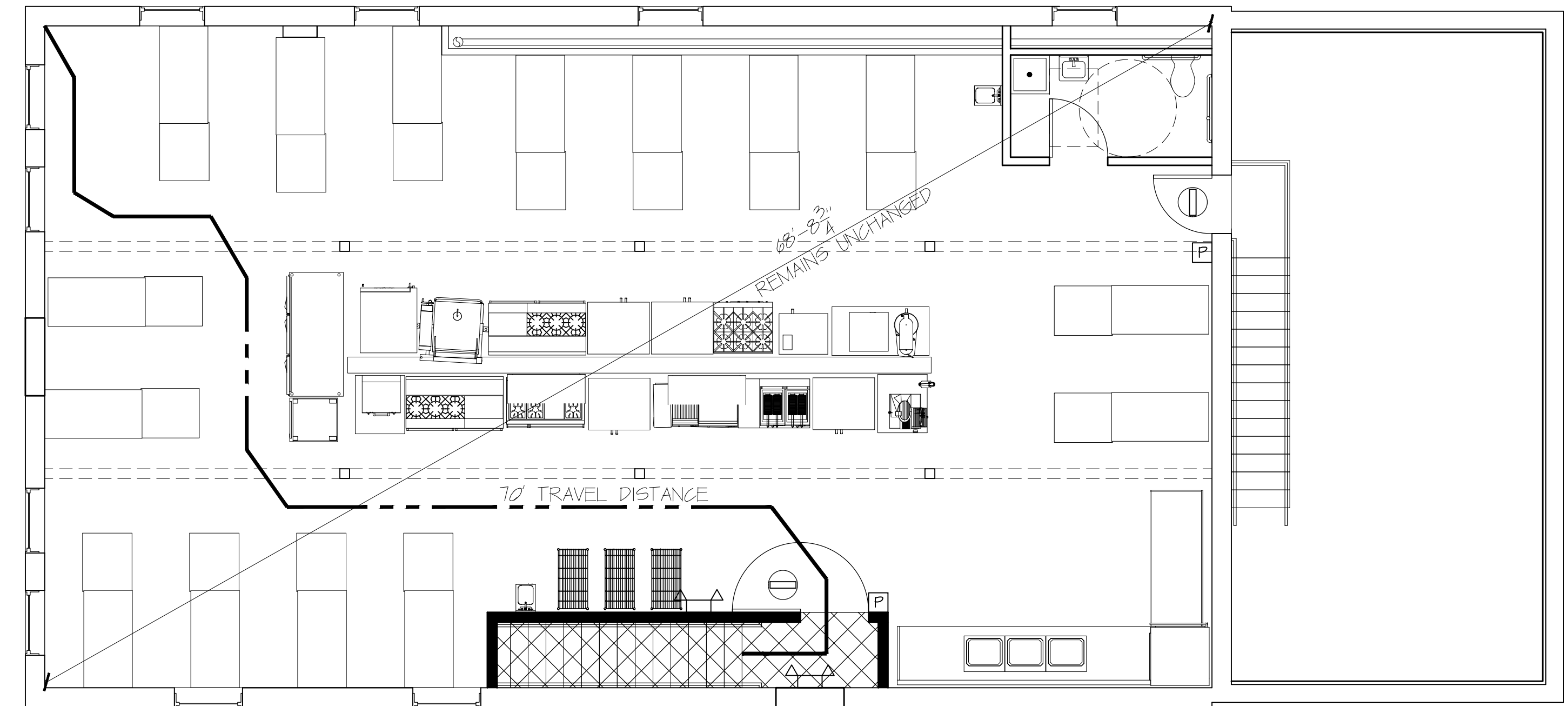


APPLICANT
 FORQ, LLC
 Neil Spillane, Manager
 78 Winter Street
 Portland, Maine 04102
 Tel: 207-400-5145



FIRST FLOOR LIFE SAFETY
 SCALE: 3/16" = 1'-0"



SECOND FLOOR LIFE SAFETY
 SCALE: 3/16" = 1'-0"

KEY

- ← EXIT
- TRAVEL DISTANCE PATH (DISTANCE LABELED ON PATH)
- Ⓟ FULL STATION
- ⊕ EXIT SIGN
- ⚡ EMERGENCY LIGHTING
- ▨ PROPOSED 1-HR RATED CEILING ASSEMBLY (UL-L574)
- ▬ PROPOSED 1-HR RATED WALL ASSEMBLY (SEE WALL TYPES)

Building Area Summary
 Double height space: 531sf
 Primary structure 1st: 2029sf
 Primary structure 2nd: 2029sf
 Single height space: 599sf
 Total building area: 5188sf

IEBC
 404 Level 3 Alteration
 406 Change of Occupancy

IBC Code Notes:

303.1	Group B (Assembly under 50 occs)			
306.2	Group F-1 (Bakeries, Food Processing)			
400	N/A			
503	Use:	IIIB		
	B (Assembly under 50)	3 stories	19,000sf	55'
	F-1 (Bakeries, Food Processing)	2 stories	12,000sf	55'
508.3	Non-separated uses:			
	Sprinkler by most restrictive use			
	all other code applies individually to use			
601	Type IIIB no rating requirements except 2hr exterior walls (existing)			
705	Exterior walls are existing and will remain unchanged			
705.8	Existing rear windows will need to be infilled			
708	Shaft enclosures required for main stair Not required for tasting stair (exception 7) Rated door at top of tasting stair required			
715.4	Shaft doors: 1hr rating Unclosed stair door: 1hr rating			
803.9	Class B wall and ceiling finishes within exit stair and passage way Class C finishes all other locations			
903.2.2	No sprinkler required for group B			
903.2.4	No sprinkler required for Group F-1			
907.2.2	No Alarm system required for Group B			
907.2.4	Manual fire alarm system is required for group F			
907.5	Manual Alarm system			

1004.1.1	Occupant Load:			
	Assembly w/o fixed seats (tables and chairs)	15net	531sf	36 occs
	Commercial Kitchen	200gross	4657sf	24 occs
1009.1	Stair width can be 36"			
1014.3	Common path of travel limit:	75'		

- 1015.1 (1) exit permitted from space with 49 or less occupants
- 1016.1 Exist Access Travel Distance Limit: 200' (non-sprinkled, B & F-1)
- 1021.2 Second story occupancy: 200gross 2029sf 11 occs
- One exit permitted for: B & F (75' travel distance limit)
- 1022.1 Exit stairway shall have 1hr rating and shall extend to building exterior using an "exit passageway"
- 1023.2 Exit passageway may be only 36" wide (serving less than 50 occs)
- 1023.3 Exit passageway shall be 1-hour fire barriers
- 1023.5 Only openings providing exit access are allowed in exit passageway

NFPA Code Notes
 3.3.32.5 Existing Building
 3.3.38 Project involves Change of Use
 3.3.168 Project involves modification to existing structure
 6.1.2.1 Not Assembly Occupancy as occupant load is under 50
 6.1.10.1 Mercantile Occupancy: Eating and sales under 50 occupants
 6.1.12.1 Industrial Occupancy: Food Preparation & Processing
 6.2.2.3 Ordinary Hazard of Contents
 43.5 Modifications
 Extensive modification is reconstruction

Bild Architecture
 PO Box 8235
 Portland, ME 04104
 207.408.0168
 evan@bildarchitecture.com

FORQ FOOD LABS
 PORTLAND, MAINE

PROJECT NO. 15014
 PROJECT NAME FORQ FOOD LABS
 PORTLAND, MAINE

ISSUE DATE 1/13/16
 SHEET SCALE 1/4" = 1'-0"

DRAWN BY AEW
 SHEET TITLE LIFE SAFETY PLANS

PROGRESS SET NOT FOR CONSTRUCTION

REVISIONS

1	-
2	-
3	-
4	-
5	-

A

1.0