

COPYRIGHT: Reuse or reproduction of the contents of this document is not permitted without written permission of Bild Architecture LLC

DOOR SCHEDULE														
NO.	LOCATION		DOOR SIZE (IN)			TYPE	MAT'L	FINISH	FIRE RATING	HARDWARE SET	FRAME			NOTES
	FROM	TO	W	HT	THK						TYPE	MAT'L	FINISH	
100	EXTERIOR	ENTRY VESTIBULE	-	-	-	-	-	-	-	A	-	-	-	EXISTING DOOR, NEW HARDWARE
101	HALLWAY	BATH	36	84	1-3/4	F	SOLID CORE WOOD	PNT	-	B	F1	HM	PNT	
102	HALLWAY	BATH	36	84	1-3/4	F	SOLID CORE WOOD	PNT	-	B	F1	HM	PNT	
103	TASTING ROOM	CLOSET	36	80	1-3/4	F	SOLID CORE WOOD	PNT	-	G	F2	HM	PNT	
104	HALLWAY	LOWER LEVEL KITCHEN	36	84	1-3/4	F	SOLID CORE WOOD	PNT	-	A	F1	HM	PNT	
105	EXTERIOR	TASTING ROOM	36	84	1-3/4	G	GLASS/ALUM	-	-	F	-	-	-	
106	LOWER LEVEL KITCHEN	OFFICE 2	36	84	1-3/4	F	WOOD PANEL	PNT	-	E	F1	W	PNT	
107	LOWER LEVEL KITCHEN	OFFICE 1	36	84	1-3/4	F	WOOD PANEL	PNT	-	E	F1	HM	PNT	
108	LOWER LEVEL KITCHEN	CONF RM	36	84	1-3/4	F	SOLID CORE WOOD	PNT	-	E	F1	HM	PNT	
109	NOT USED													
110	EXTERIOR	SERVICE ENTRY	-	-	-	-	-	-	-	A	-	-	-	EXISTING DOOR, NEW HARDWARE
111	NOT USED													
112	STAIR	UPPER LEVEL KITCHEN	42	84	1-3/4	F	SOLID CORE WOOD	PNT	1-HR	D	F3	HM	PNT	
113	UPPER LEVEL KITCHEN	TASTING ROOM	36	84	1-3/4	F	SOLID CORE WOOD	PNT	1-HR	D	F1	HM	PNT	
114	UPPER LEVEL KITCHEN	BATH	36	84	1-3/4	F	SOLID CORE WOOD	PNT	-	B	F1	HM	PNT	
115	EXTERIOR	LOWER LEVEL KITCHEN	-	-	-	-	OVERHEAD DOOR	-	-	-	-	-	-	EXISTING
116	EXTERIOR	TASTING ROOM	7'-9"	8'-2"	N/A	OH	OVERHEAD DOOR	ANODIZED ALUM	-	MANUAL	OH	BREAK METAL	-	

NOTES:

HARDWARE SCHEDULE				
HARDWARE SET	HARDWARE TYPE	FINISH	MANUFACTURER	NOTES
A	KEYED ENTRY CODE ACTIVATED CATCH ENTRY PANICBAR EXIT / LEVER LOCKSET CLOSER	TBD	TBD	
B	PRIVACY/BATHROOM LEVER LOCKSET	TBD	TBD	
C	PASSAGE LEVER LOCKSET	TBD	TBD	
D	PASSAGE LEVER LOCKSET CLOSER MAGNETIC HOLDBACKS	TBD	TBD	OFFICE LOCKSET ON D113
E	OFFICE LEVER LOCKSET	TBD	TBD	
F	PASSAGE LEVER LOCKSET CLOSER & DEADBOLT	TBD	TBD	
G	CLOSET LEVER LOCKSET	TBD	TBD	
H	OH DOOR HARDWARE	TBD	TBD	

NOTES:  
1. ALL DOOR HANDLES TO BE ADA COMPLIANT LEVER HANDLES.

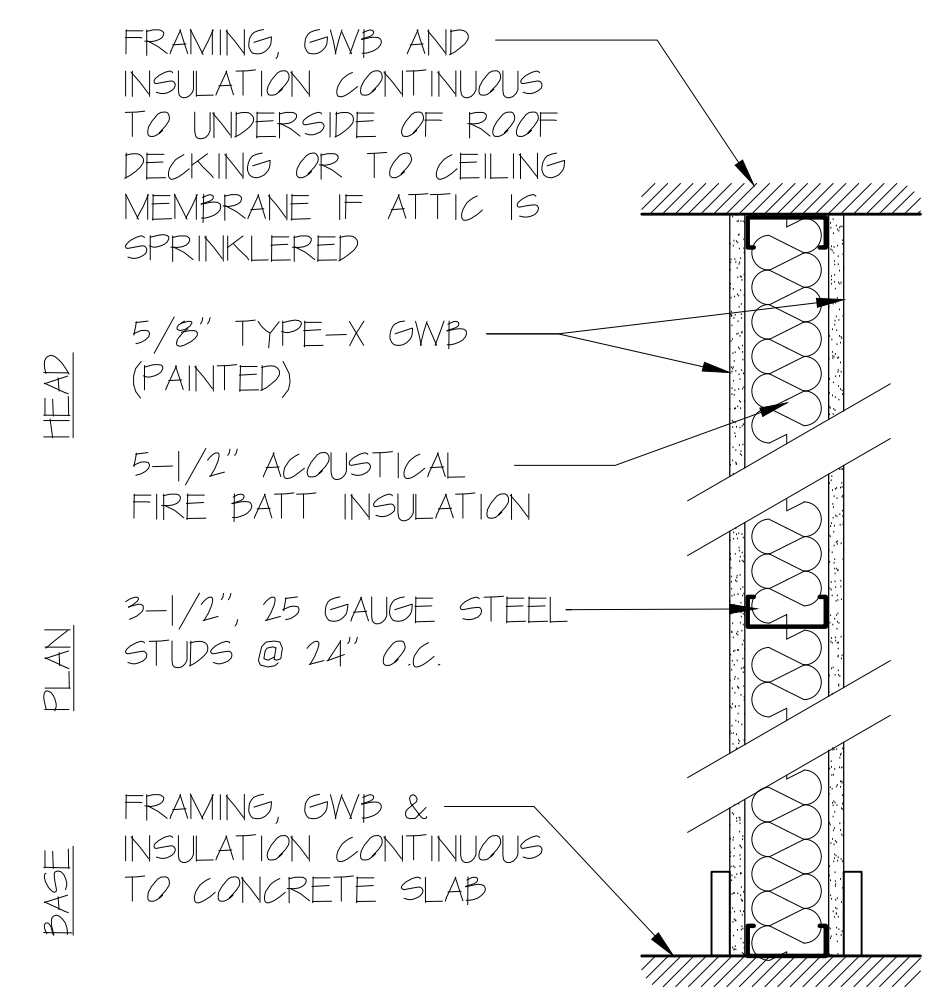
APPLICANT  
FORQ, LLC  
Neil Spillane, Manager  
78 Winter Street  
Portland, Maine 04102  
Tel: 207-400-5145

**Bild Architecture**  
PO Box 8235  
Portland, ME 04104  
207.408.0168  
evan@bildarchitecture.com

FINISH SCHEDULE					
ROOM NAME	FLOOR	WALLS	WALL BASE	CEILING	NOTES
ENTRY VESTBULE	CONC	PT	RWB	OPEN	1
ADA BATH	RF	PT	RWB	ACT	3
ADA BATH	RF	PT	RWB	ACT	3
TASTING ROOM	CONC	PT	RWB	OPEN	1
LOWER LEVEL KITCHEN	CONC	PT	BWB	ACT	1, 3
STORAGE	CONC	PT	RWB	OPEN	1
OFFICE 1	CONC	PT	RWB	OPEN	1
OFFICE 2	CONC	PT	RWB	OPEN	1
CONF ROOM	CONC	PT	RWB	OPEN	1
SERVICE ENTRY	CONC	PT	RWB	GYP	1
WALK -IN COOLER/FREEZER	-	-	-	-	2
ADA BATH & JANITOR	QT	PT	QT	ACT	
UPPER LEVEL KITCHEN	QT	PT	QT	ACT	
STAIR 1	RT	PT	RWB	GYP	
STAIR 2	RT	PT	RWB	OPEN	

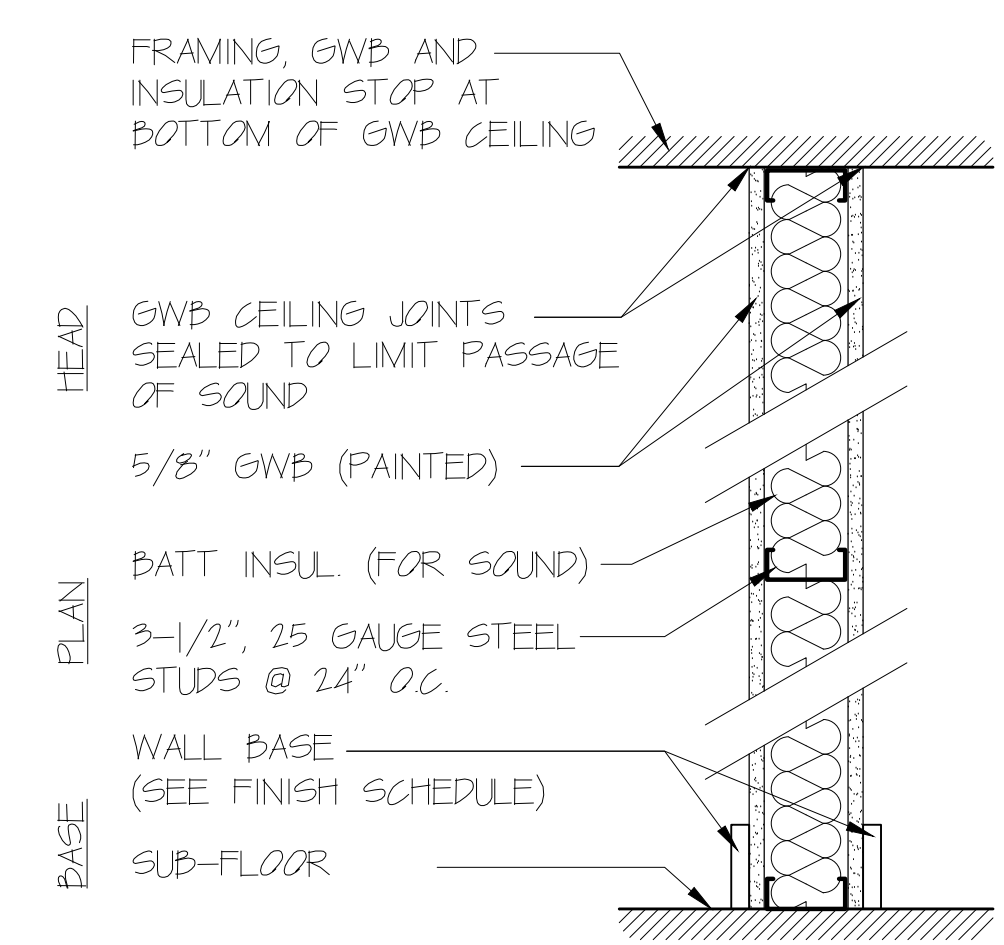
LEGEND:  
ACT - ACOUSTICAL CEILING TILE  
CONC - CONCRETE  
CT - CERAMIC TILE  
GYP - GYP BOARD  
PT - PAINTED  
RT - RUBBER TREAD  
RWB - RESILIENT WALL BASE  
RF - RUBBER FLOORING  
QT - QUARRY TILE

NOTES:  
1. CONCRETE FLOORS TO HAVE CLEAR COAT NON PENETRATING SEALER  
2. COOLER/FREEZER FINISHES BY MANUFACTURER  
3. MOISTURE RESISTANT GWB IN WET AREAS



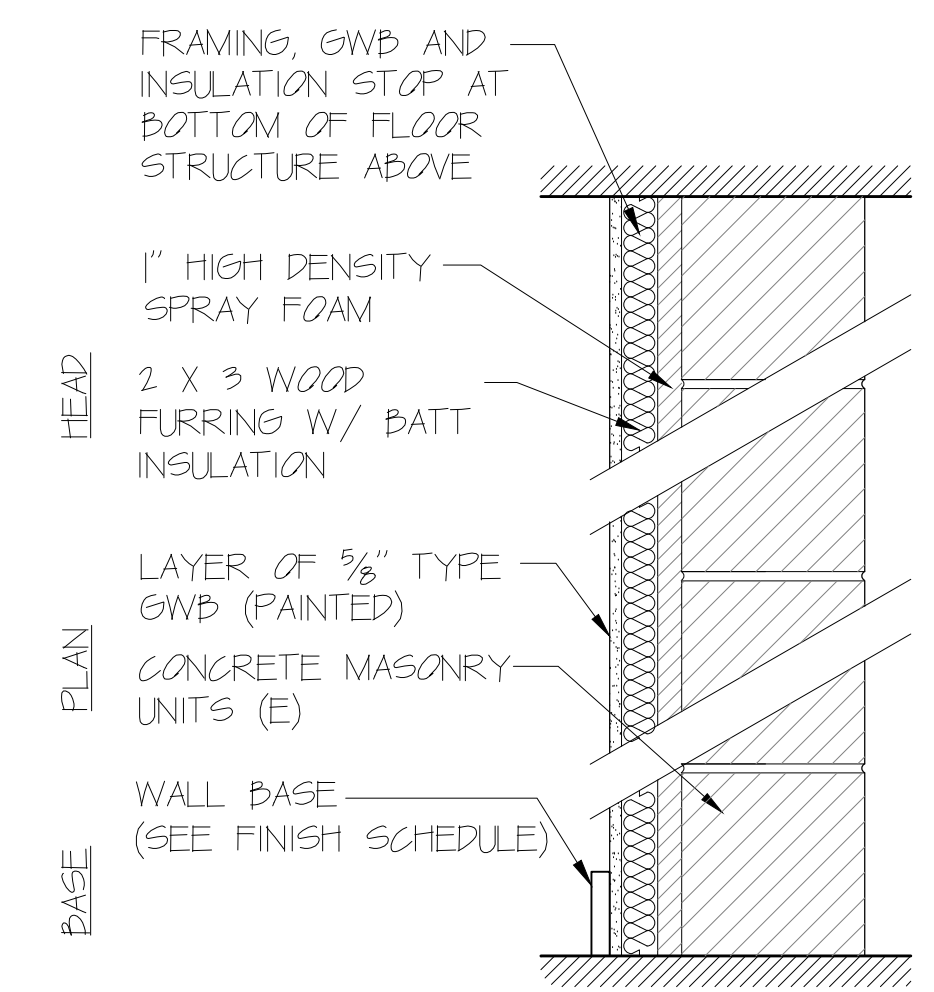
1A 3-1/2" METAL STUD FRAMED WALL  
STC RATING: 48  
4-3/4" ACTUAL WALL THICKNESS

2A 3-1/2" METAL STUD FRAMED FIRE WALL  
1 HOUR RATED UL-1419 ASSEMBLY  
STC RATING: 48

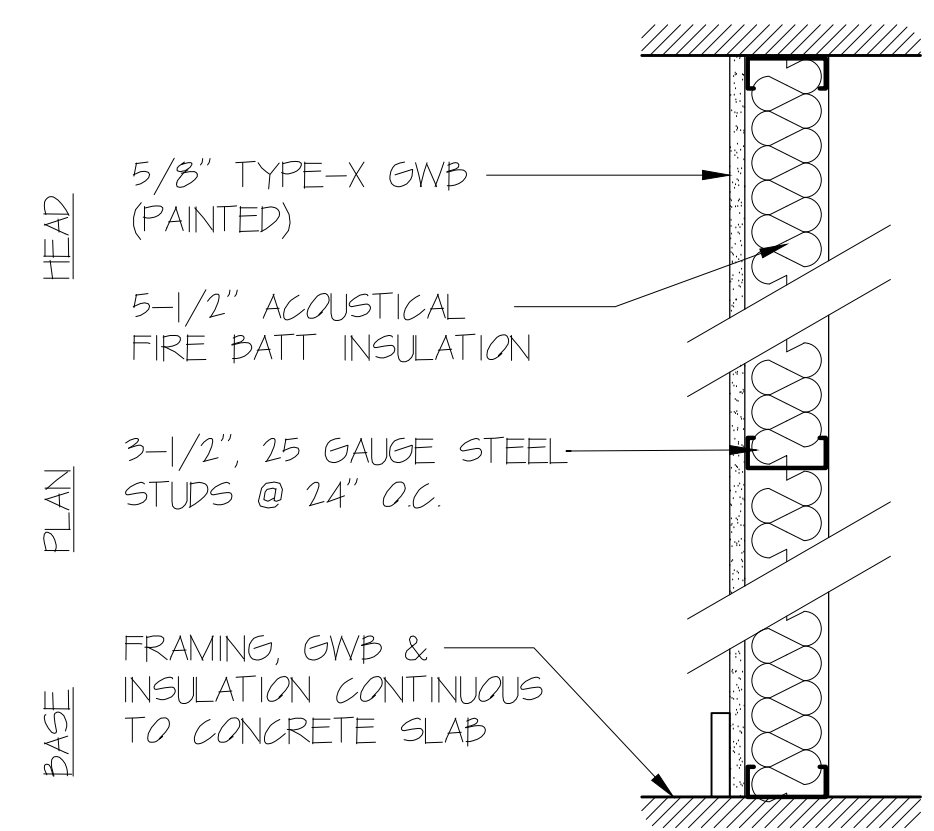
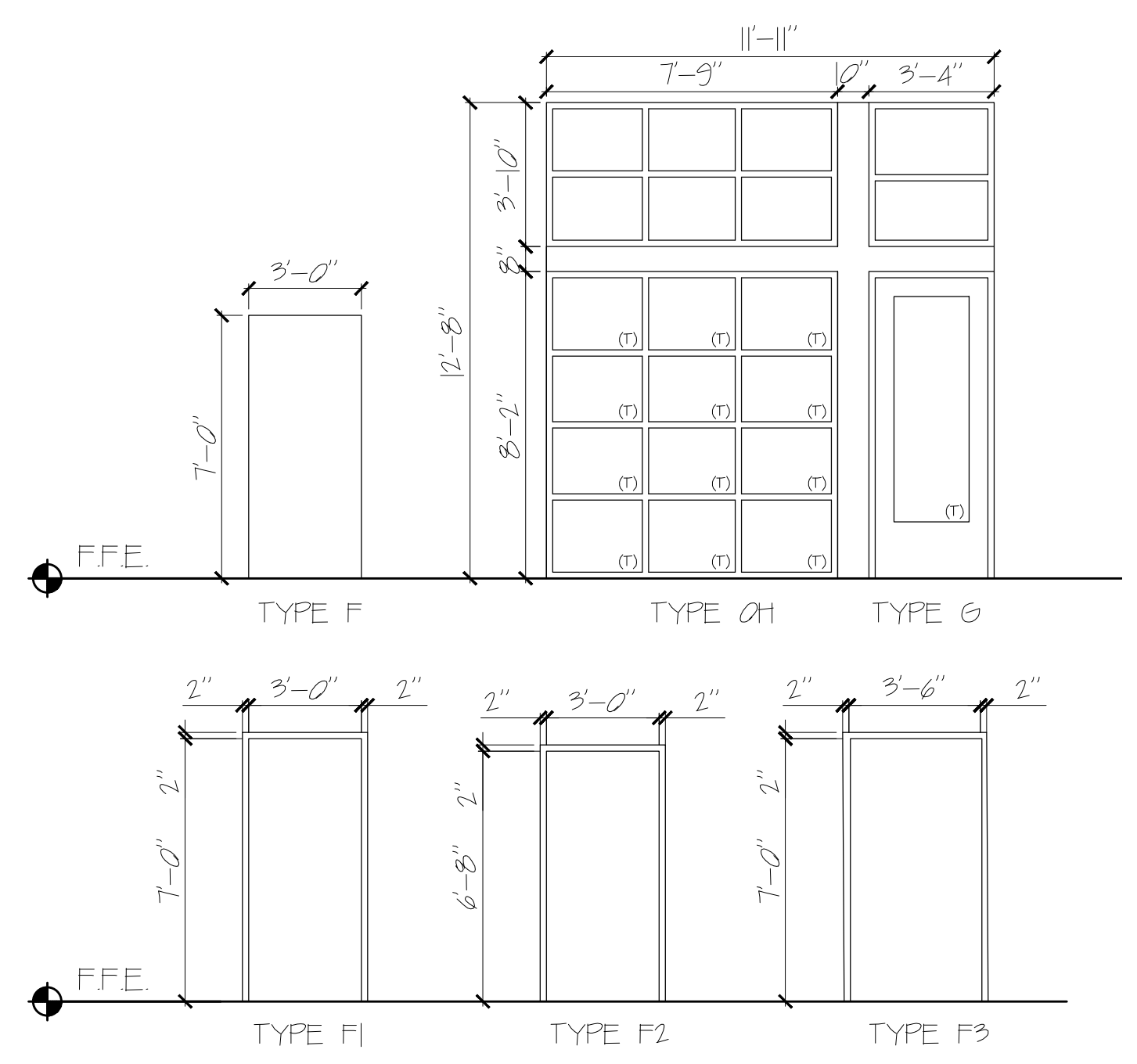


A4 3-1/2" METAL STUD FRAMED ACOUSTICAL WALL  
4-3/4" ACTUAL WALL THICKNESS

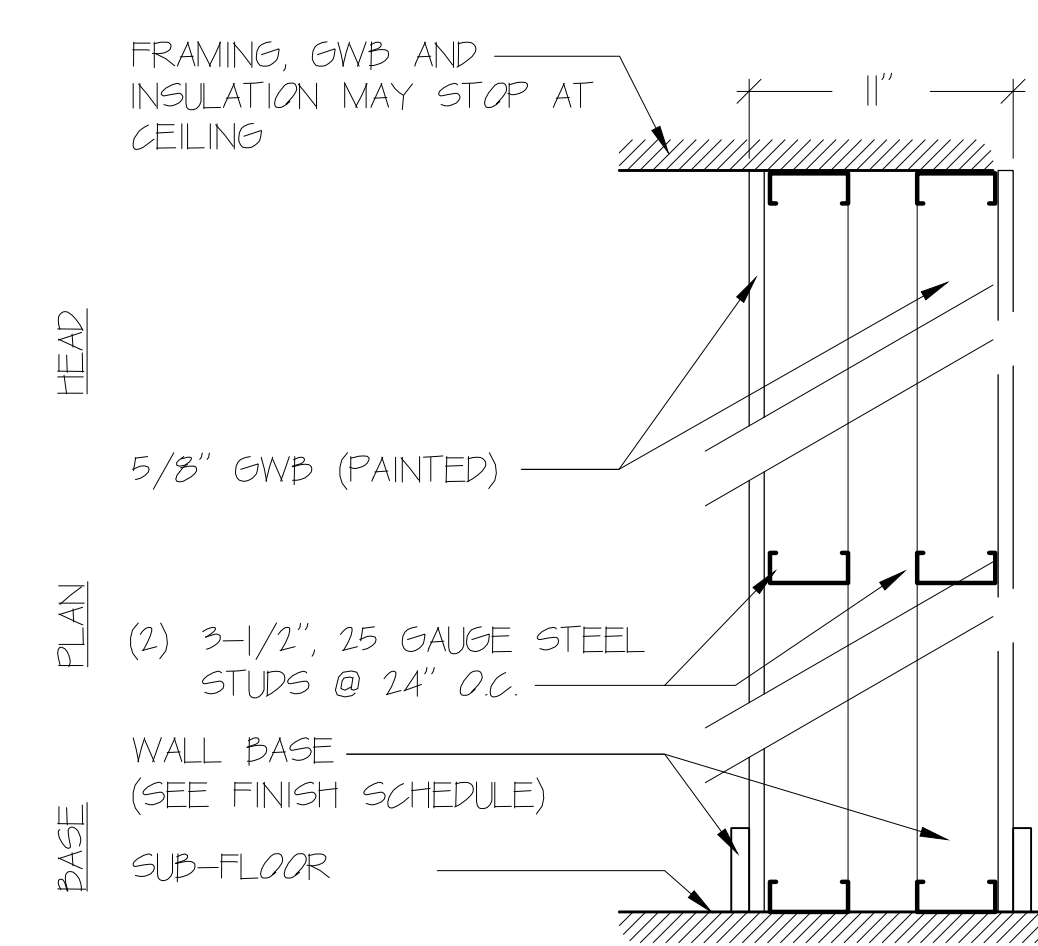
A6 5-5/8" METAL FRAMED ACOUSTICAL WALL  
6 3/4" ACTUAL WALL THICKNESS



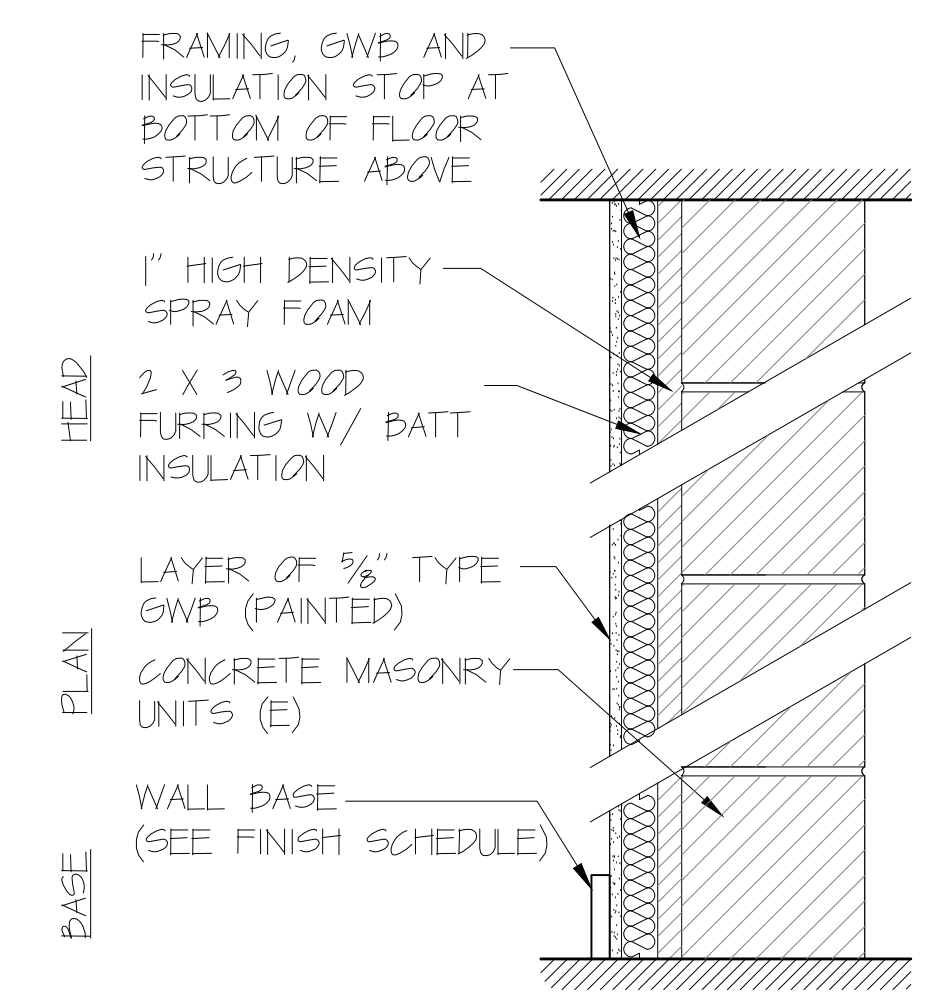
F1 FURRED CMU WALL  
10-5/8" +/- ACTUAL WALL THICKNESS



2A 3-1/2" METAL STUD FRAMED SHAFT WALL  
4-1/4" ACTUAL WALL THICKNESS



3A DOUBLE 3-1/2" METAL STUD FRAMED WALL  
10-5/8" +/- ACTUAL WALL THICKNESS



F1 FURRED CMU WALL  
10-5/8" +/- ACTUAL WALL THICKNESS

PROJECT NO. 15014  
PROJECT NAME FORQ FOOD LABS  
PORTLAND, MAINE

REVISIONS  
1 3/5/16  
2 3/18/16  
3 3/25/16  
4  
5

CONSTRUCTION SET  
SUBJECT TO CODE CHANGES

DRAWN BY AEW  
SHEET TITLE SCHEDULES  
1/4" = 1'-0"

ISSUE DATE 1/13/16  
SHEET SCALE 1/4" = 1'-0"

**A**

**1.5**