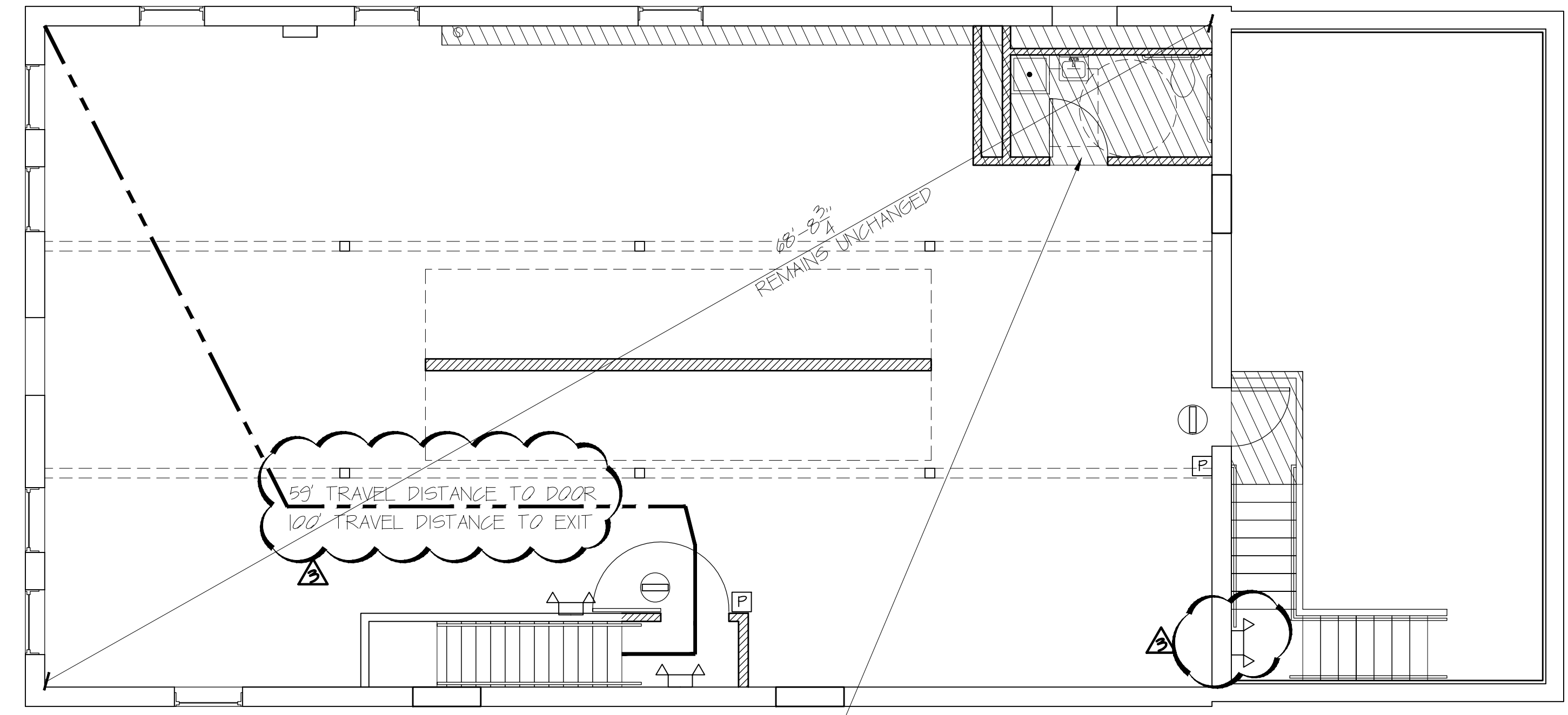
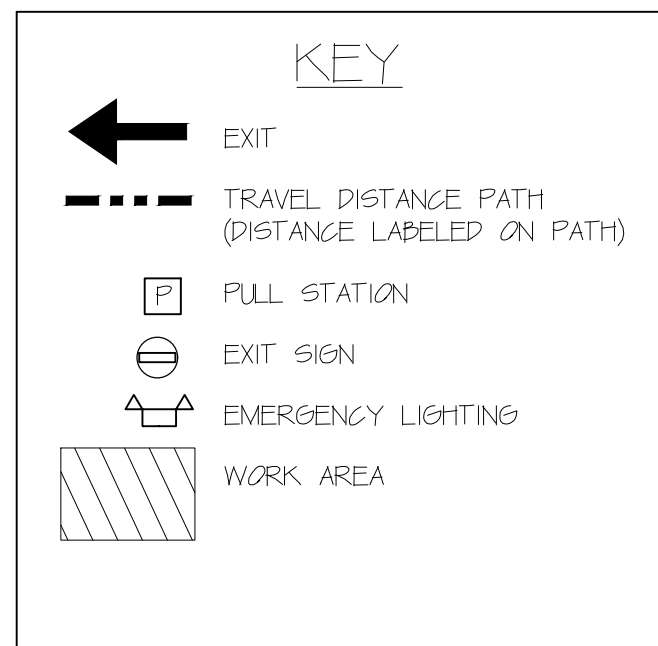


FIRST FLOOR LIFE SAFETY
 SCALE: 3/16" = 1'-0"



SECOND FLOOR LIFE SAFETY
 SCALE: 3/16" = 1'-0"

WORK AREA: 1,740SF
 (LESS THAN 50% OF BUILDING AREA)

Building Area Summary

Double height space:	531sf
Primary structure 1st:	2029sf
Primary structure 2nd:	2029sf
Single height space:	599sf
Total building area:	5188sf

Code Summary:

	Existing	Proposed
IBC Use	F-1	F-1, B (as accessory only)
NFPA 101 Use	Industrial	Industrial
Sprinkler	No	No
Fire separation of uses	N/A	No
Building footprint:	3,159sf	3,159sf
Area of work:	N/A	1,740sf
Number of tenants:	1	1

IEBC

404 Level 2 Alteration (No change of occupancy)

703.2.1.7 enclosure of vertical openings not required in existing F occupancies when openings do not exceed (3) stories

705.1 Means of Egress requirements apply only when exits and corridors are within the work area and are shared by more than one tenant.

705.4.1.1 Two egress doorways provided when travel distance to doors exceeds 75'

IBC Code Notes:

303.1 Group B (Assembly under 50 occs)

306.2 Group F-1 (Bakeries, Food Processing)

400 N/A

503 Use: III B
 B (Assembly under 50) 3 stories 19,000sf 55'
 F-1 (Bakeries, Food Processing) 2 stories 12,000sf 55'

508.3 Non-separated uses:
 Chapter 9 shall apply to entire non-separated area by whichever individual use is most restrictive.
 all other code applies individually to use

601 Type III B no rating requirements except 2hr exterior walls (existing)

705 Exterior walls are existing and will remain unchanged

705.8 Existing rear windows will need to be infilled

708 Shaft enclosures required for main stair (Struck do to limited scope of renovation to existing building as shown in IEBC review above)
 Not required for tasting stair (exception 7)
 Rated door at top of tasting stair required
 715.4 Shaft doors: 1hr rating
 Unenclosed stair doors: 1hr rating

803.9 Class B wall and ceiling finishes within exit stair and passage way
 Class C finishes all other locations

903.2.2 No sprinkler required for group B
 903.2.4 No sprinkler required for Group F-1
 907.2.2 No Alarm system required for Group B
 907.2.4 Manual fire alarm system is required for group F
 907.5 Manual Alarm system

1004.1.1 Occupant Load:
 Assembly w/o fixed seats (tables and chairs) 15net 348sf 24 occs
 Commercial Kitchen 200gross 4657sf 24 occs

1009.1 Stair width can be 36"

1014.3 Common path of travel limit: 75'
 50' common Path of Travel limit by NFPA

1015.1 Exit permitted from space with 49 or less occupants

1016.1 Exist Access Travel Distance Limit: 200' (non-sprinkled, B & F-1)

1021.2 Second story occupancy: 200gross 2029sf 11 occs
 One exit permitted for: B & F (75' travel distance limit)

1022.1 Exit stairway shall have 1hr rating and shall extend to building exterior using an "exit passageway"

1023.2 Exit passageway may be only 36" wide (serving less than 50 occs)

1023.3 Exit passageway shall be 1-hour fire barriers

1023.5 Only openings providing exit access are allowed in exit passageway

NFPA Code Notes

3.3.32.5 Existing Building

6.1.12.1 Industrial is processing, assembly, mixing, packaging, finishing, decorating, repair

6.1.14.1.1 Multiple occupancies shall be either mixed or separated

6.1.14.3.2 The rules of the most restrictive occupancy shall be used in mixed (unseparated) occupancies

6.2.2.3 Ordinary Hazard of contents

7.3.1.2 occupancy load
 Assembly unfixed seating (merc) 15net 348sf 24 occs
 Industria/kitchens 100gross 4961sf 50 occs
 TOTAL 74 occs

Occupancy breakdown by floor:
 2nd floor 21 occs (1 exit available)
 1st floor 53 occs (3 exits available)

7.4.1.1 Single means of egress as permitted by occupancy chapters

7.5.1.3.2 not less than 1/2 the max overall diagonal between two exits

40.1.4.1.1 General industrial occupancy

40.2.4.1.2 Single means of egress is allowed within common path of travel

40.2.5 Common path of travel limit 50' non-sprinkled

43.2.2.1.3 Modification (no change of use)

43.7.1.1 Change of use with no change in occupancy classification

43.7.3 Change of use within same hazard category