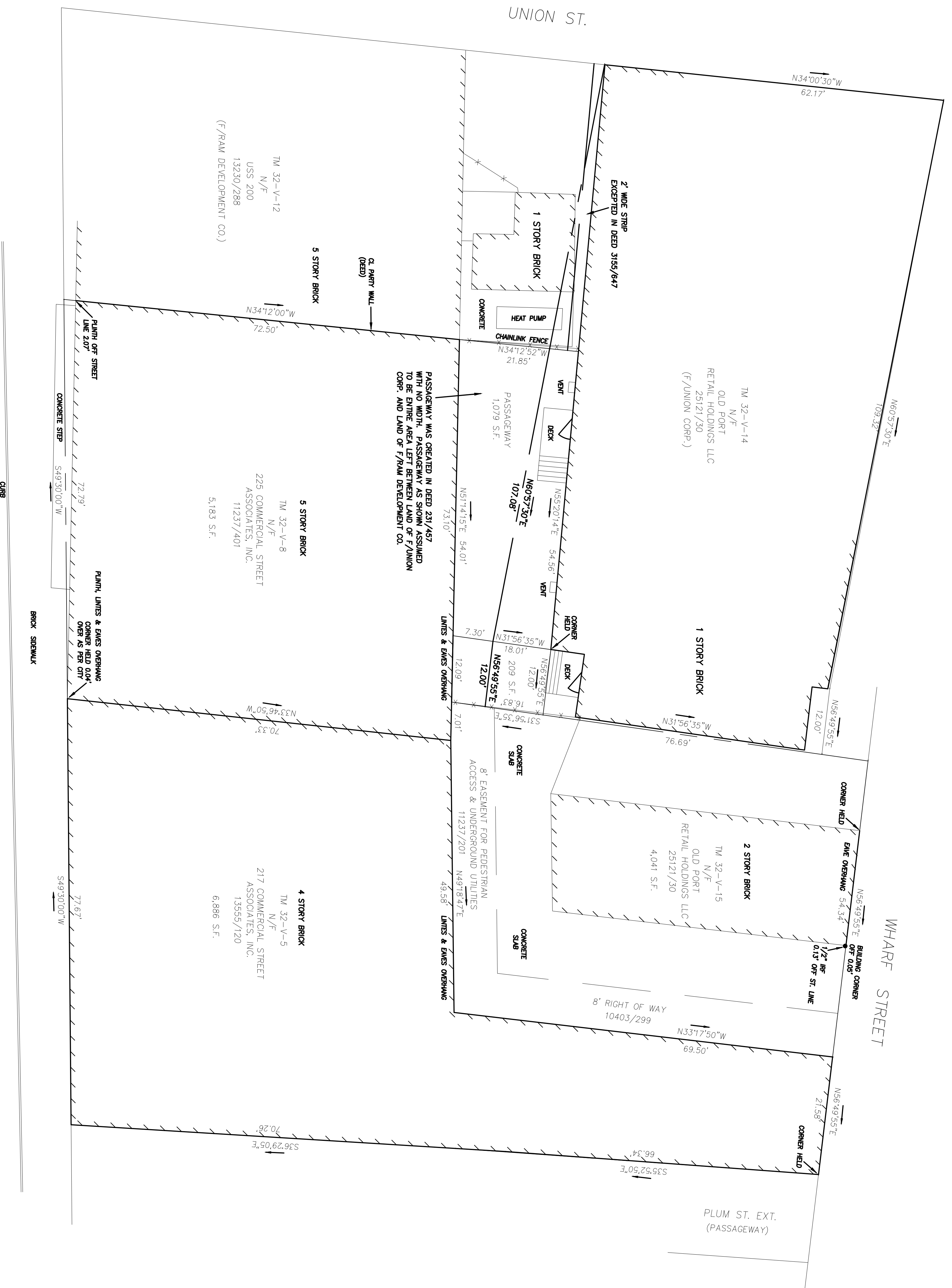


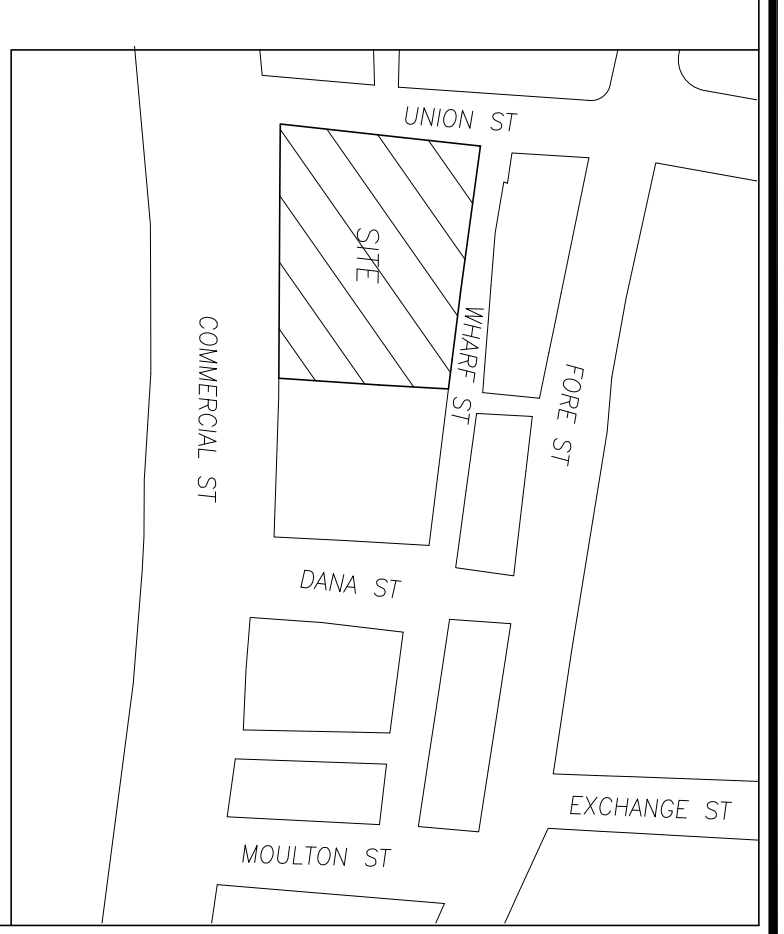
NOTE: NOT ALL IMPROVEMENTS SHOWN.



PLAN REFERENCES

1. PLAN OF PROPERTY IN PORTLAND, MAINE MADE FOR CARR BROTHERS CO. DATED JAN. 14, 1989 REVISED NOV. 2, 1970 BY H.L. & E.C. JORDAN SURVEYORS.
2. PLAN OF LAND, STANDARD BOUNDARY SURVEY, ON UNION STREET, PORTLAND, MAINE FOR RDM MANAGEMENT COMPANY DATED JULY 31, 1985, REV. 2 11/9/88 BY OWEN HASKELL, INC.
3. SITE PLAN AT 38 WHARF STREET, PORTLAND, MAINE FOR JOSEPH L SOLEY DATED JUNE 9, 1994 BY OWEN HASKELL, INC.
4. SITE PLAN OF WINSLOW BLOCK, COMMERCIAL AND WHARF STREETS, PORTLAND, MAINE FOR G.D. INC. DATED FEB. 22, 1994, REV. 9/26/97 BY OWEN HASKELL, INC.

COMMERCIAL STREET
PAVED - PUBLIC 100' WIDE



LOCATION MAP
N.T.S.

PRELIMINARY

PLAN OF LAND

AT
42-50 WHARF STREET
PORTLAND, MAINE

MADE FOR
MICHAEL BOLAND

OWEN HASKELL, INC.
390 U.S. ROUTE ONE, FALMOUTH, ME 04106 (207) 774-0424
PROFESSIONAL LAND SURVEYORS

Drawn By	OHI	Date	NOVEMBER 04, 2009	Job No.	2009-138
Trace By	JLW	Scale	1" = 10'	Drawn No.	1
Check By	JMS				
Block No.	FILE				