

© 2018 RYAN SENATORE ARCHITECTURE

DELI FIT-UP
UNION STREET
PORTLAND, MAINE



RYAN SENATORE
ARCHITECTURE
565 CONGRESS STREET
PORTLAND, MAINE 04101
207-650-6414
senatorearchitecture.com

CONSULTANTS:

REVISIONS:

DATE: 20 FEBRUARY 2018

PROJECT No. 1778

DRAWN BY: RRT, RJS, JPF

CHECKED BY: RJS

SCALE: AS NOTED

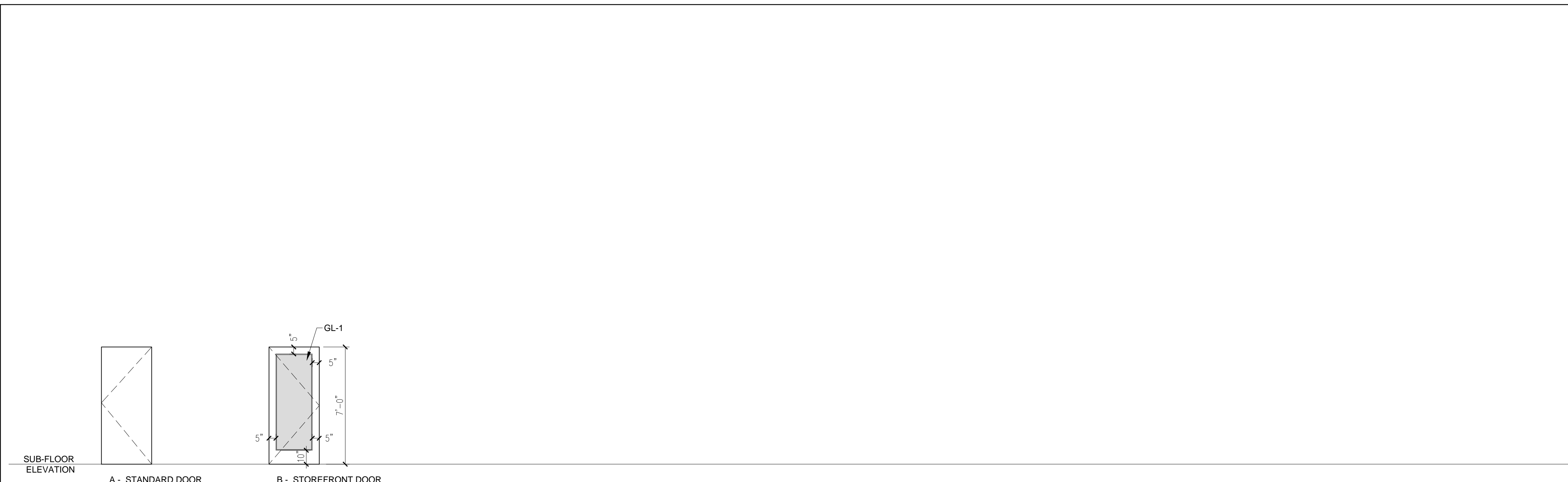
SHEET TITLE:
WINDOW AND
DOOR
SCHEDULE

A7-0

- DOOR NOTES:
- 1.) ALL EXTERIOR GLAZING TO BE LOW-E ARGON FILLED INSULATED GLAZING UNITS
 - 2.) FRAME ALL OPENINGS WITH ELEVATIONS
 - 3.) SEAL EXTERIOR DOORS TO ROUGH OPENING WITH LOW EXPANDING FOAM INSULATION - SEE DETAILS
 - 4.) ALL DOOR HARDWARE TO BE LEVER TYPE
 - 5.) ALL EXTERIOR DOORS TO BE WEATHERSTRIPPED

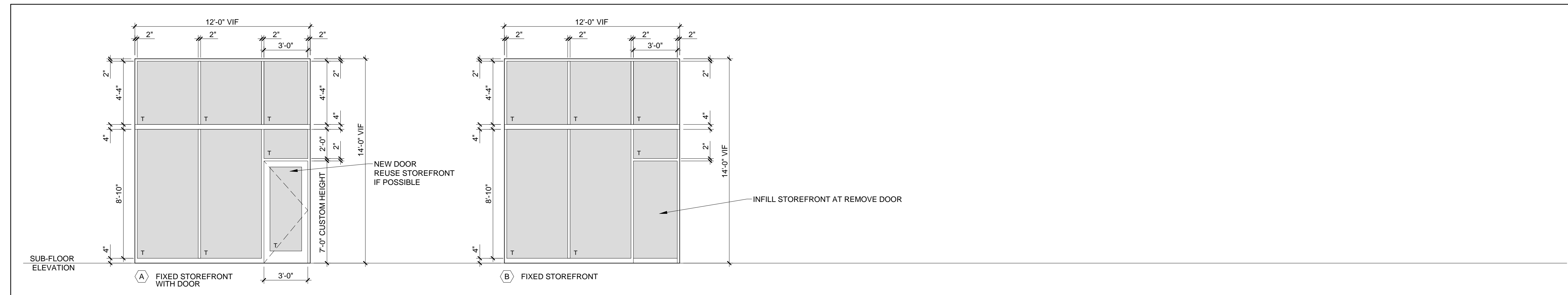
FRAME TYPES:

GLAZING SCHEDULE	
KEY	GLAZING TYPE
GL-1	INSULATED CLEAR TEMPERED GLAZING
GL-2	FIRE RATED INSULATED GLAZING
GL-3	CLEAR TEMPERED GLASS
GL-4	CLEAR INSULATED TEMPERED GLASS
GL-5	FIRE RATED GLAZING



1 DOOR TYPES
1/4" = 1'-0"

DOOR SCHEDULE															
DOOR NO.	TYPE	SIZE			MATERIAL	FINISH	INSULATED	FRAME				CLOSER	FLOOR ACCESS	REMARKS	
		WIDTH	HEIGHT	THICKNESS				TYPE	MATERIAL	THRESHOLD	HEAD				JAMB
100.1	A	3'-0"	7'-0"	1 3/4"	STL	PTD	Y	2	STL	-	-	-	-	-	-
101.1	B	3'-0"	7'-0"	1 3/4"	AL	ANO	Y	2	AL	-	-	-	-	Y	-
102.1	A	3'-0"	7'-0"	1 3/4"	STL	PTD	Y	2	STL	-	-	-	-	Y	60



WINDOW SCHEDULE LEGEND

- T = TEMPERED GLASS
- FG = FIBERGLASS
- AL = ALUMINUM
- DH = DOUBLE HUNG
- AW = AWNING
- LV = LOUVER
- F = FIXED
- GL = GLIDER

1 WINDOW TYPES
1/4" = 1'-0"

WINDOW SCHEDULE															
KEY	ACTION	ROUGH OPENING (WxH) VIF	R.O. HEAD HEIGHT FROM SUB-FLOOR	HEAD	JAMB	SILL	MATERIAL	FINISH	DETAILS					REMARKS	
									TYPE	MATERIAL	THRESHOLD	HEAD	JAMB		SILL
A	F	12'-0" x 14'-0"	-	-	-	-	AL	ANO	-	-	-	-	-	1	THERMALLY BROKEN STOREFRONT WINDOW SYSTEM - FINISH TO MATCH EXISTING STOREFRONT, REPLACE EXISTING STOREFRONT AS REQUIRED
B	F	12'-0" x 14'-0"	-	-	-	-	AL	ANO	-	-	-	-	-	1	THERMALLY BROKEN STOREFRONT WINDOW SYSTEM - FINISH TO MATCH EXISTING STOREFRONT, REPLACE EXISTING STOREFRONT AS REQUIRED

- WINDOW NOTES:
- 1.) ALL GLAZING LOCATED WITHIN 18" OF FINISHED FLOOR TO BE TEMPERED GLASS
 - 2.) ALL EXTERIOR GLAZING TO BE INSULATED
 - 3.) FRAME ALL OPENINGS WITH ELEVATIONS
 - 4.) SEAL WINDOW TO ROUGH OPENING WITH LOW EXPANDING FOAM INSULATION - SEE DETAILS