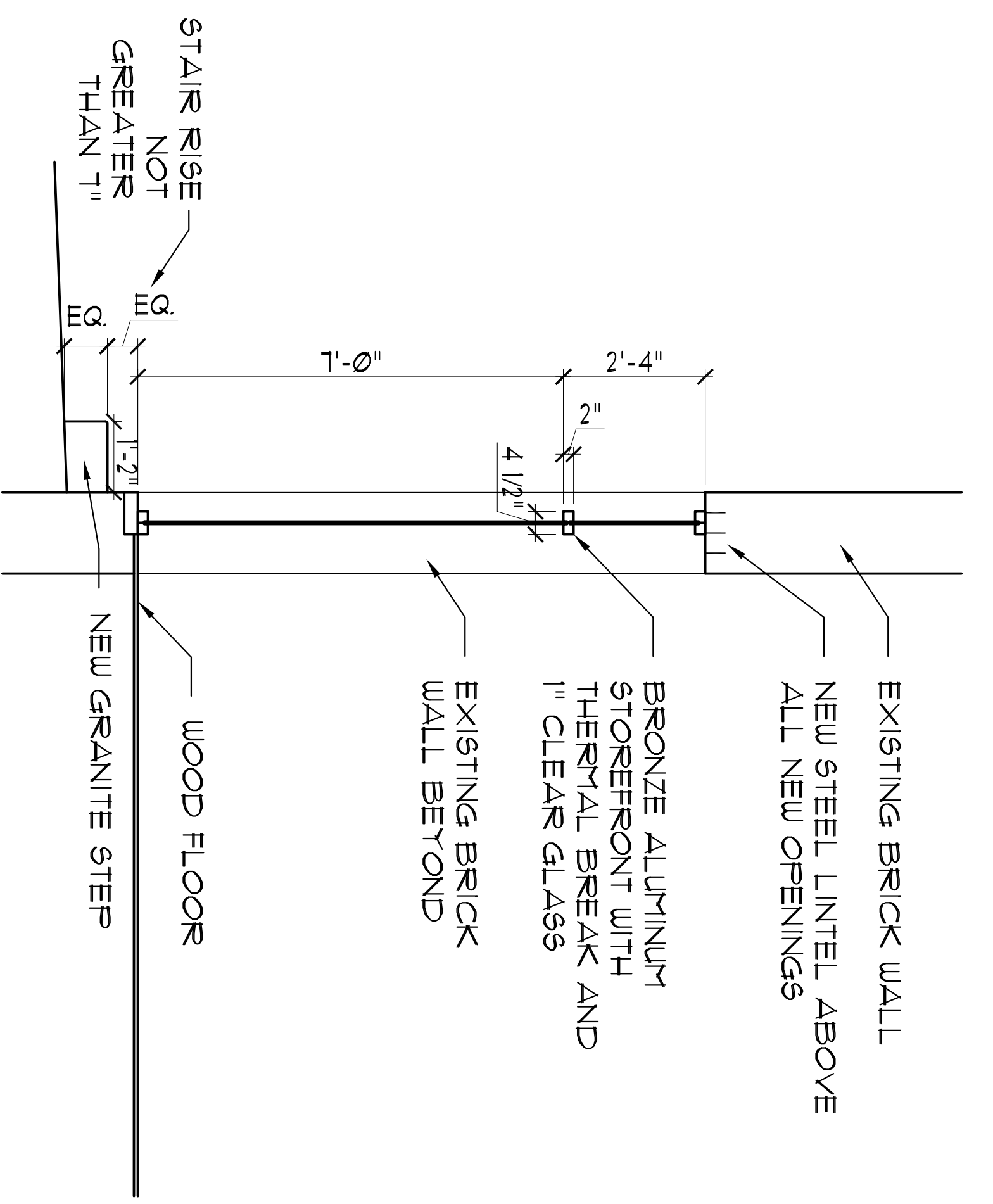
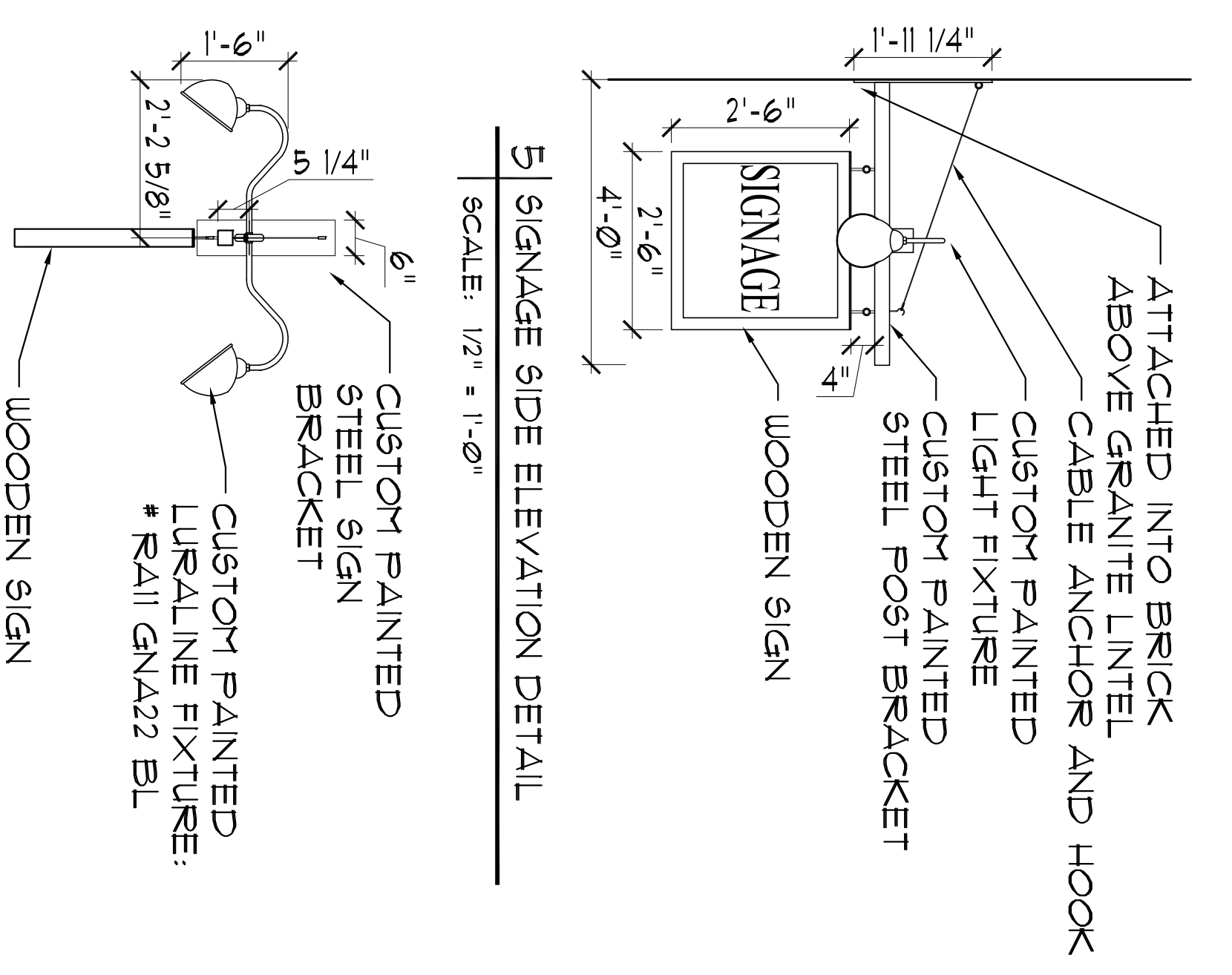


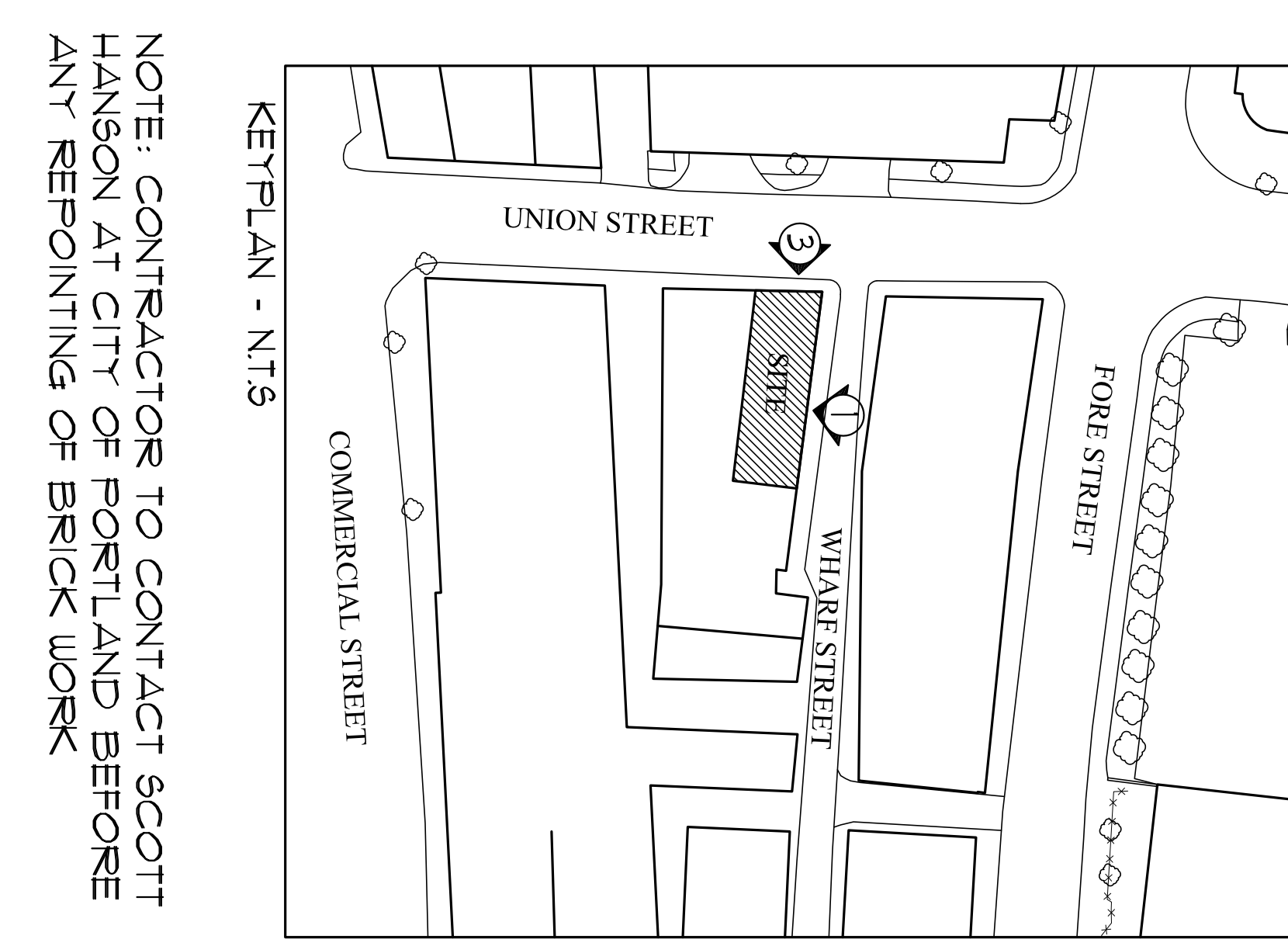
3 | NEW SIDE ELEVATION  
SCALE: 1/4" = 1'-0"



4 | NEW SIDE ELEVATION  
SCALE: 1/2" = 1'-0"

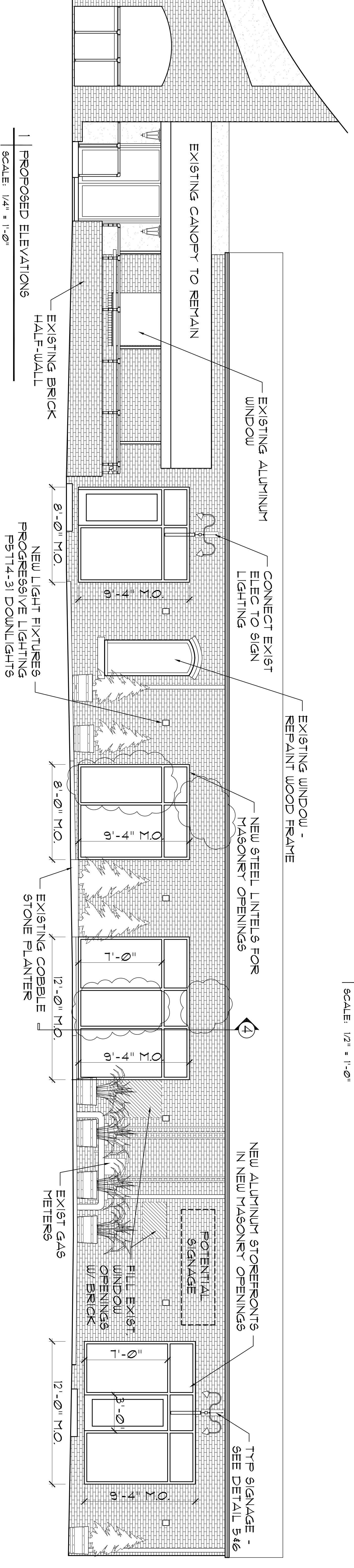
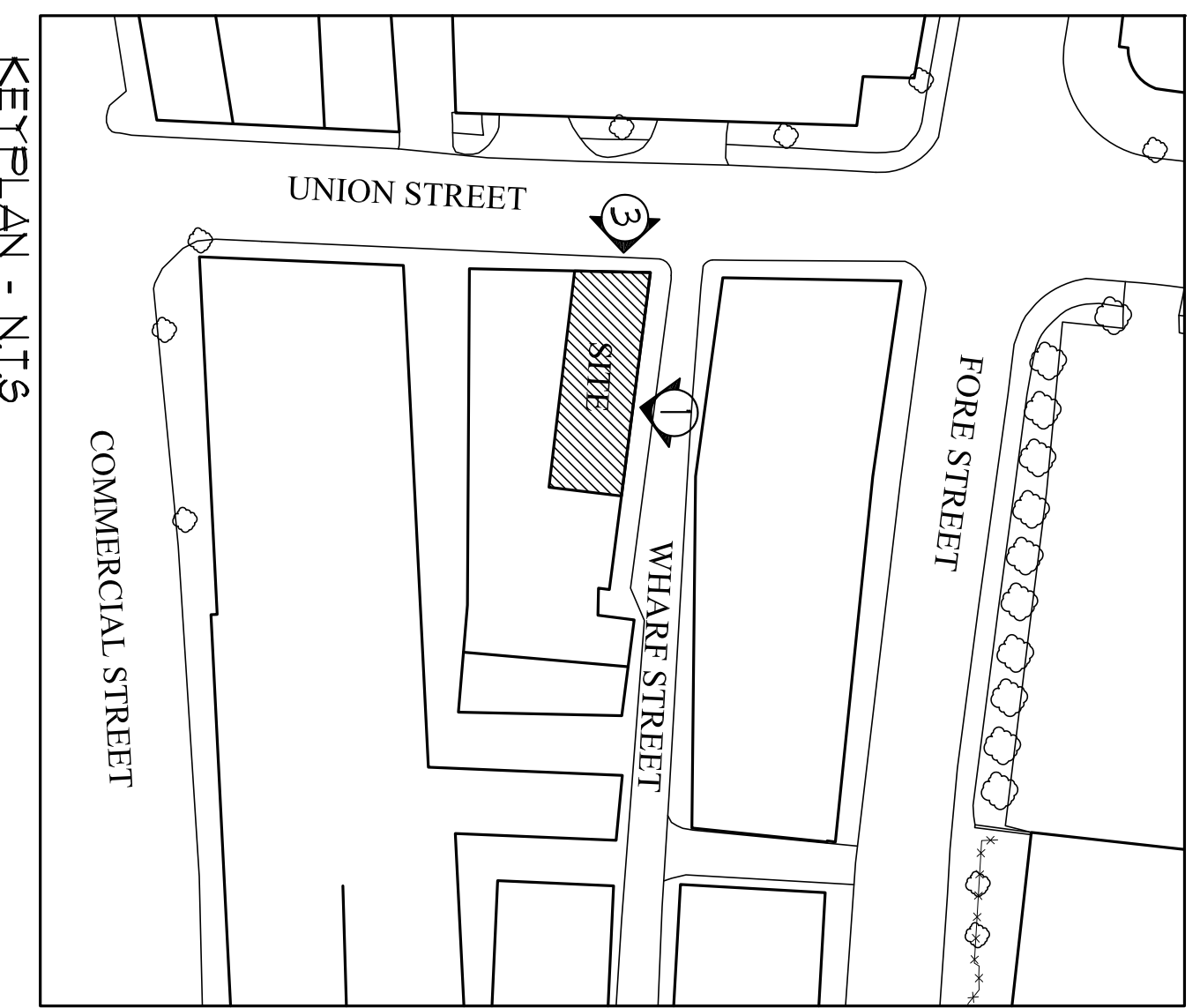


5 | SIGNAGE SIDE ELEVATION DETAIL  
SCALE: 1/2" = 1'-0"

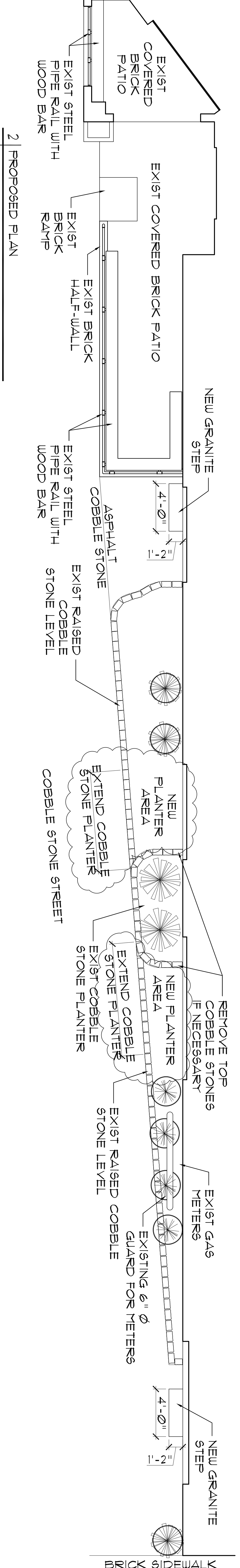


6 | SIGNAGE FRONT ELEVATION DETAIL  
SCALE: 1/2" = 1'-0"

NOTE: CONTRACTOR TO CONTACT SCOTT HANSON AT CITY OF PORTLAND BEFORE ANY REPOINTING OF BRICK WORK



1 | PROPOSED ELEVATIONS  
SCALE: 1/4" = 1'-0"



2 | PROPOSED PLAN  
SCALE: 1/4" = 1'-0"

<b>A-3</b>	ELEVATIONS	Date 7 JANUARY, 2009	Scale AS NOTED	Project: <b>HAVANASOUTH</b>	<b>ARCHETYPE, P.A.</b> <b>ARCHITECTS</b> 48 Union Wharf Portland, Maine 04101 (207) 772-6022 Fax (207) 772-4056	OWNER:
		Revisions: 10-28-09		52 WHARF ST PORTLAND, ME		