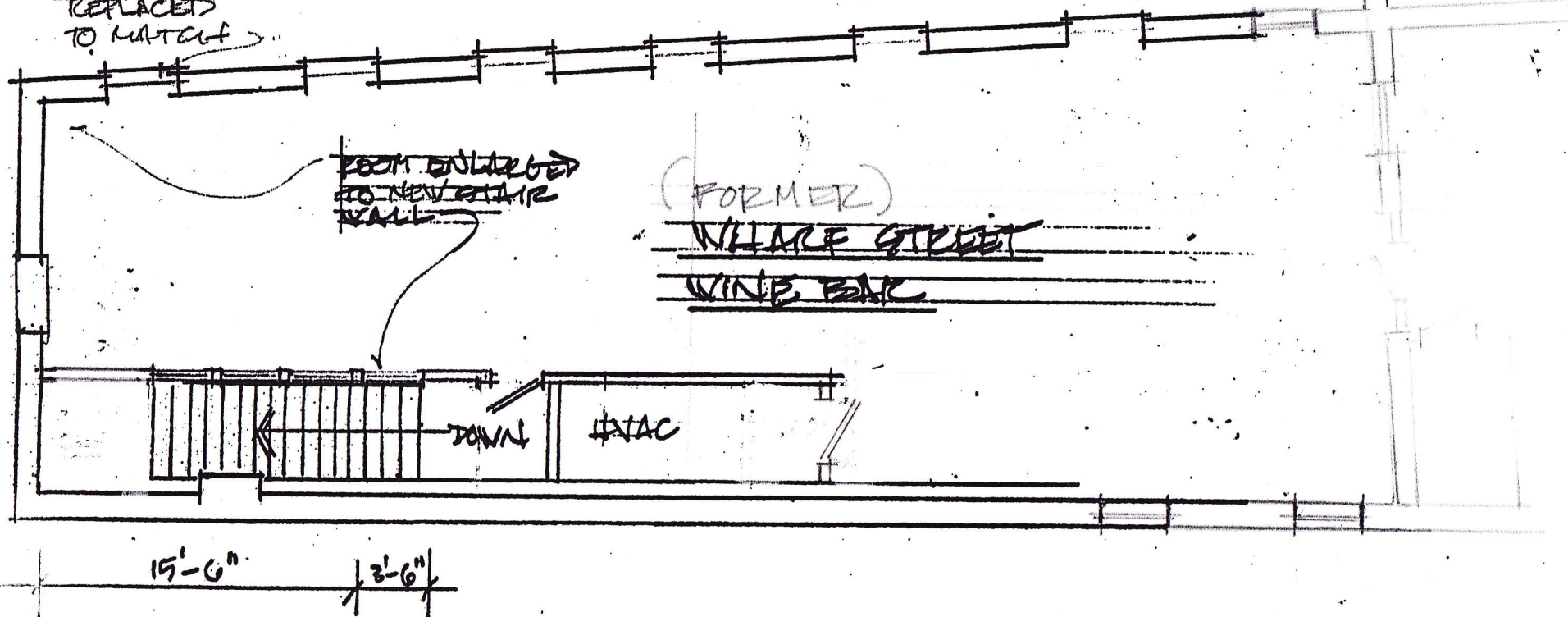


NEW WINDOW
REPLACED
TO MATCH

ROOM ENLARGED
TO NEW STAIR
WALL

(FORMER)
WILLACE STREET
WINE BAR

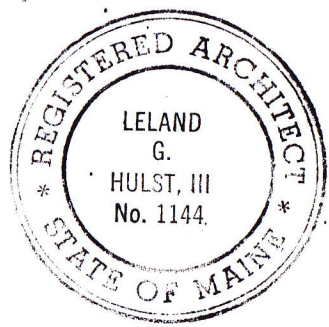


SECOND FLOOR PLAN: THE CHASE BLOCK

1/8" = 1'-0"

12/10/01 PROPOSAL

4/10/13 EXIST.



LELAND HULST
ARCHITECTURAL SERVICES

276 Spring Street / Portland, Maine 04102 / (207) 773-8843