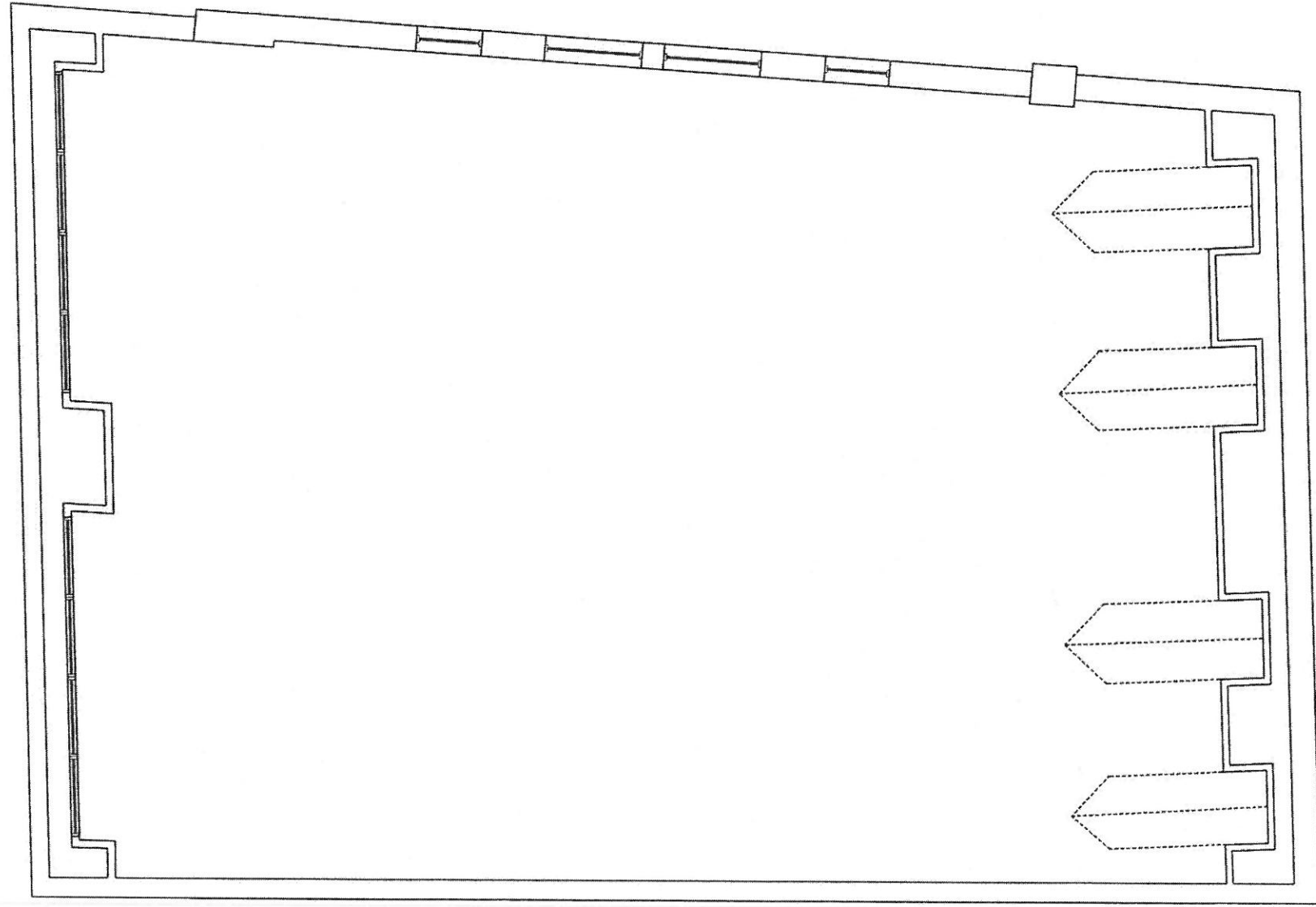
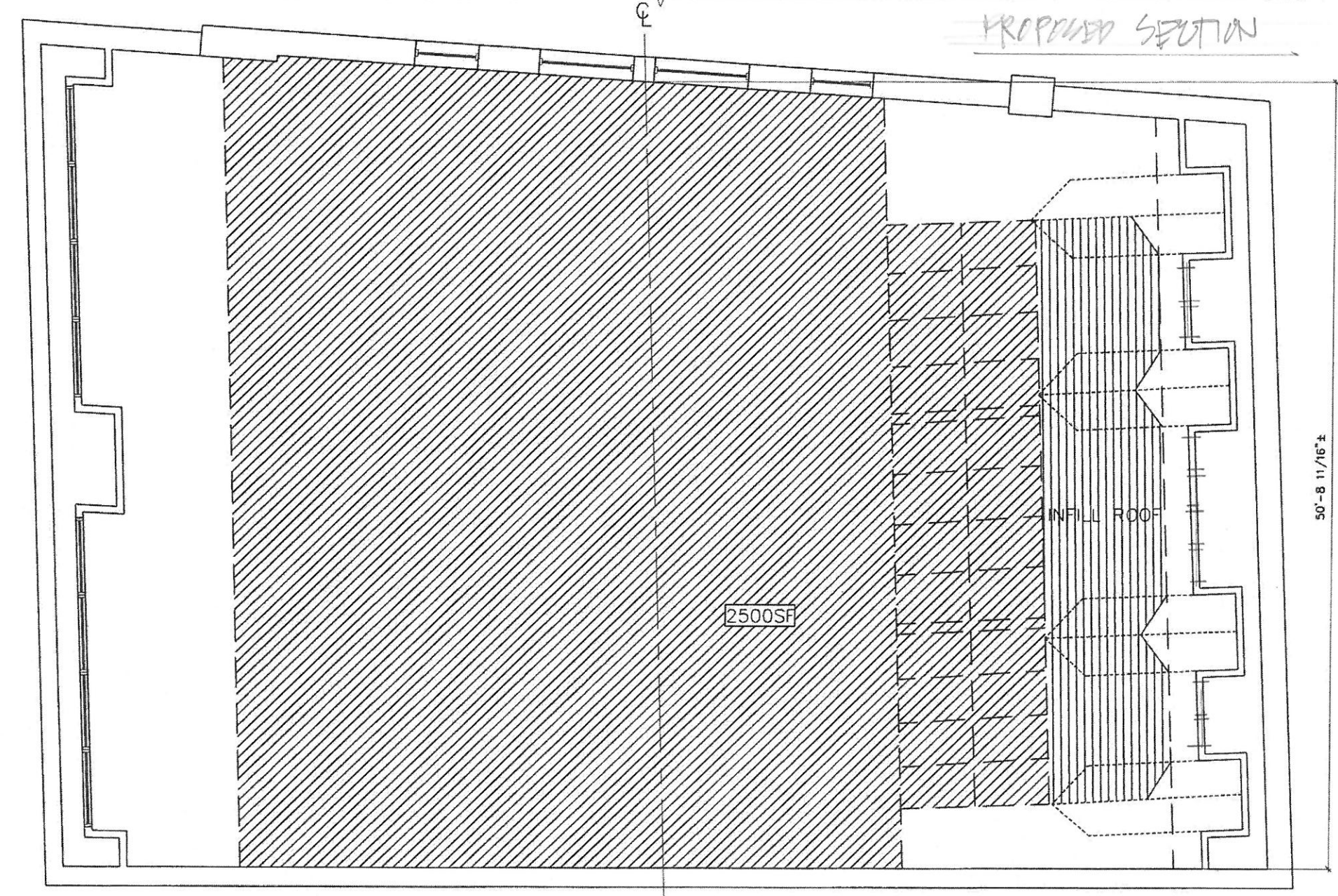
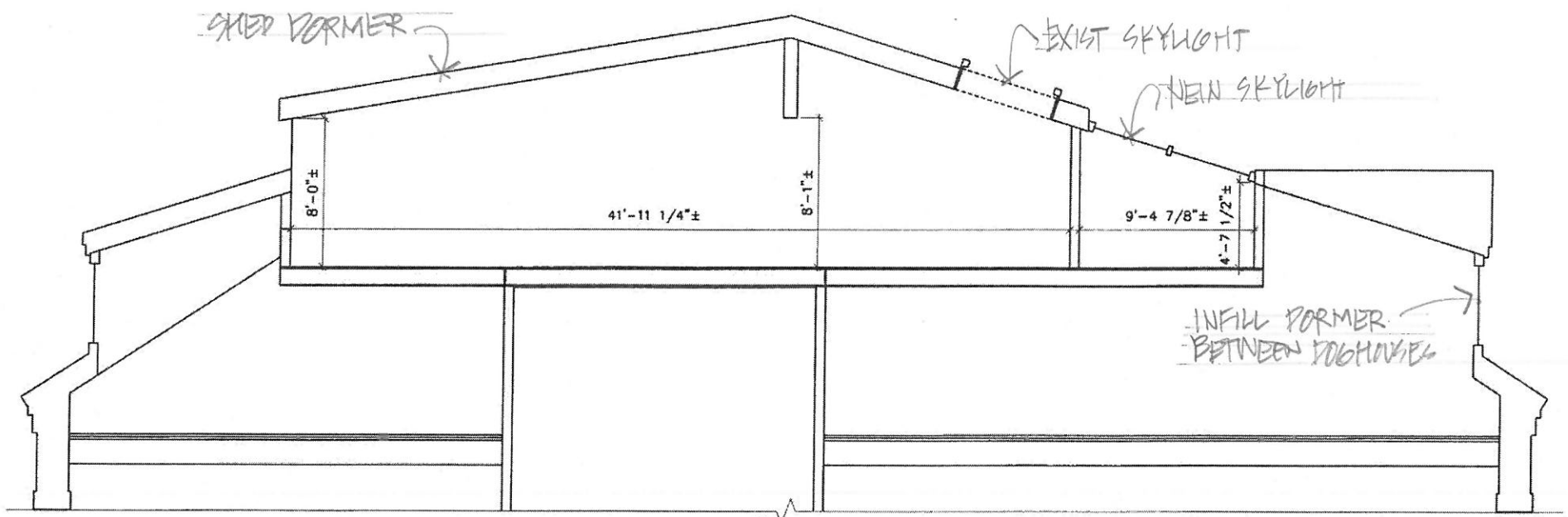


EXISTING SECTION



GRANITE BLOCK - 215 COMMERCIAL STREET - PORTLAND - 18 APRIL 2017

GRADE 1/8" 2 1/2" 0' ~~1/2" 1/2" 0'~~ - PROPOSED DORMER INFILL AND ROOFTOP ALTERATIONS



PROPOSED SECTION

GRANITE BLOCK . 215 COMMERCIAL STREET . PORTLAND . 18 APRIL 2017

GRADE 1/8" = 1'-0" ~~1/8" = 1'-0"~~ PROPOSED DORMER INFILL AND ROOFTOP ALTERATIONS