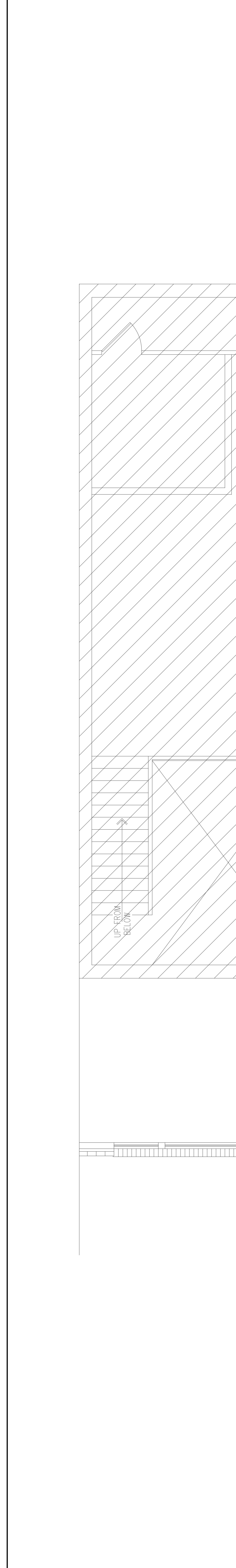


REVISION	DESCRIPTION	DATE
0	ISSUED FOR REVIEW & APPROVAL	3/5/2014

RESERVED FOR CITY STAMP



SHEET NOTES:

- ① ADDRESSABLE RELAY MODULE(S) PROVIDED FOR FAN SHUT DOWN. TIE TO INDICATED UNIT FAN CONTROLLER. INSTALLING CONTRACTOR SHALL FIELD VERIFY EXACT MOUNTING, CIRCUITING, AND PROGRAMMING REQUIREMENTS. FIELD VERIFY POWER SOURCE. USE MULTI-VOLTAGE CONTROL RELAY(S) IF REQUIRED. FIELD VERIFY EXACT QUANTITY AND LOCATION(S) WITH MECHANICAL DIVISION.
- ② DUCT SMOKE DETECTORS PROVIDED FOR THE RETURN AIR PATH AT ALL AIR HANDLING UNITS HAVING A CAPACITY GREATER THAN 2,000 CFM AND FOR THE SUPPLY AIR PATH AT ALL AIR HANDLING UNITS HAVING A CAPACITY GREATER THAN 15,000 CFM. INSTALLING CONTRACTOR SHALL FIELD VERIFY EXACT MOUNTING, CIRCUITING, AND PROGRAMMING REQUIREMENTS. PROVIDE FOR SHUT DOWN OF THE ASSOCIATED UNIT FAN(S). FIELD VERIFY UNIT POWER SOURCE. USE MULTI-VOLTAGE CONTROL RELAY(S) IF REQUIRED. FIELD VERIFY EXACT QUANTITY AND LOCATION(S) WITH MECHANICAL DIVISION. PROVIDE REMOTE TEST SWITCH IN A LOCATION ACCEPTABLE TO THE LOCAL AHU WHEN IN-DUCT SMOKE DETECTOR INDICATOR IS NOT VISIBLE TO RESPONDING PERSONNEL.

CUNNINGHAM
Security Systems

10 Princes Point Road, Yarmouth, Maine 04096
Office: 207.846.3350 • Fax: 207.846.6080

ELEVATION BURGER
205 COMMERCIAL STREET
PORTLAND, MAINE 04101
SECOND FLOOR FIRE ALARM PLAN

DRAWN	JPB UNICAD JOB #14106
CHECKED	WAYNE B. HAWES NCEET # 90496
DATE	3/4/2014
REVISION	0
SCALE	1/8"=1'-0"

UNICAD Inc.
Fire Alarm Design & Drafting Services

www.unicad.net

FA-3