

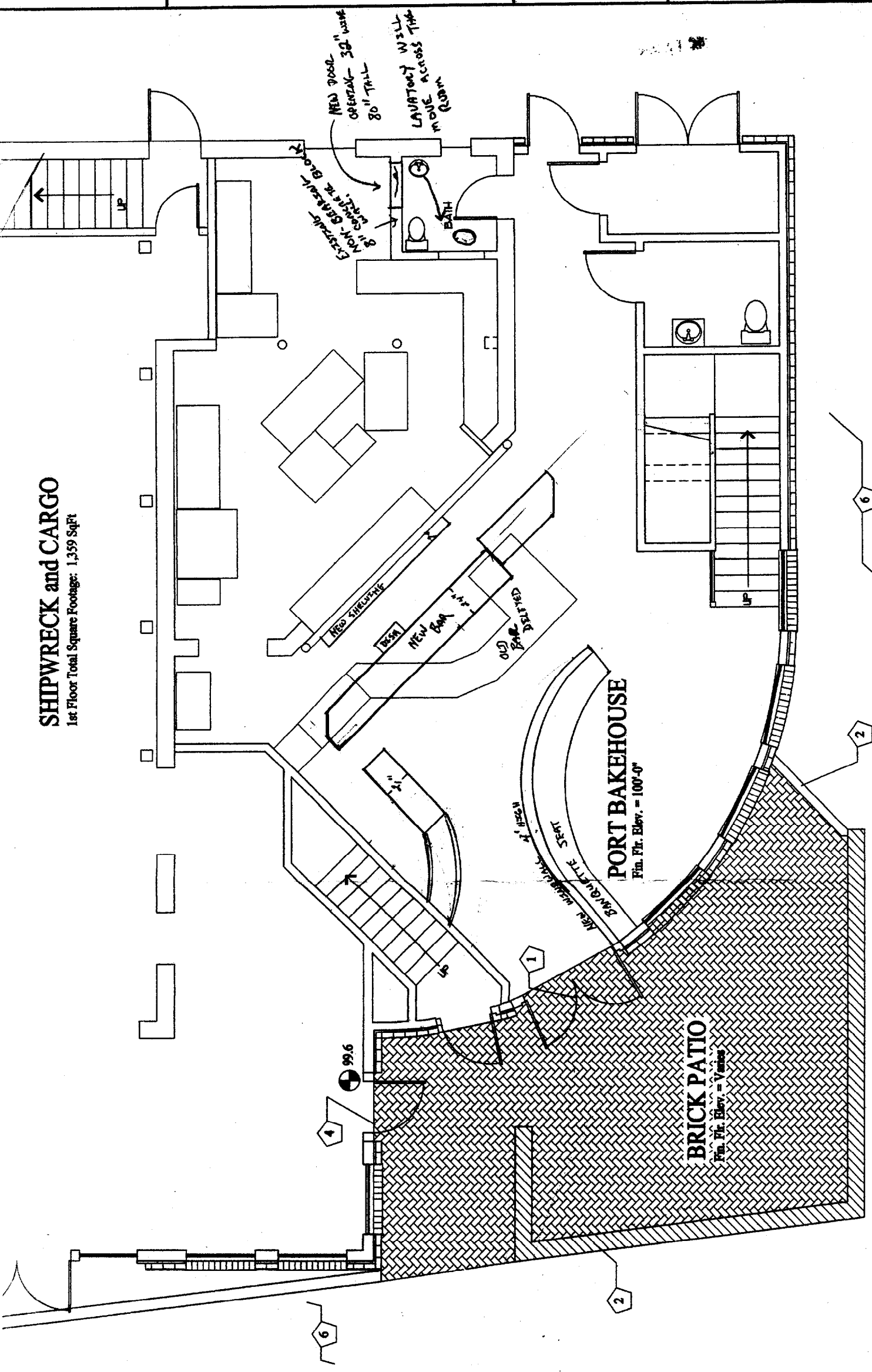
Date: 08/15/2000

Scale: 1/4" = 1'-0"

Project: The Port Bakehouse

DEPT. OF BUILDING INSPECTION
CITY OF PORTLAND, ME
NOV 17 2003

SHIPWRECK and CARGO
1st Floor Total Square Footage: 1,359 SqFt



DANA STREET

COMMERCIAL STREET

