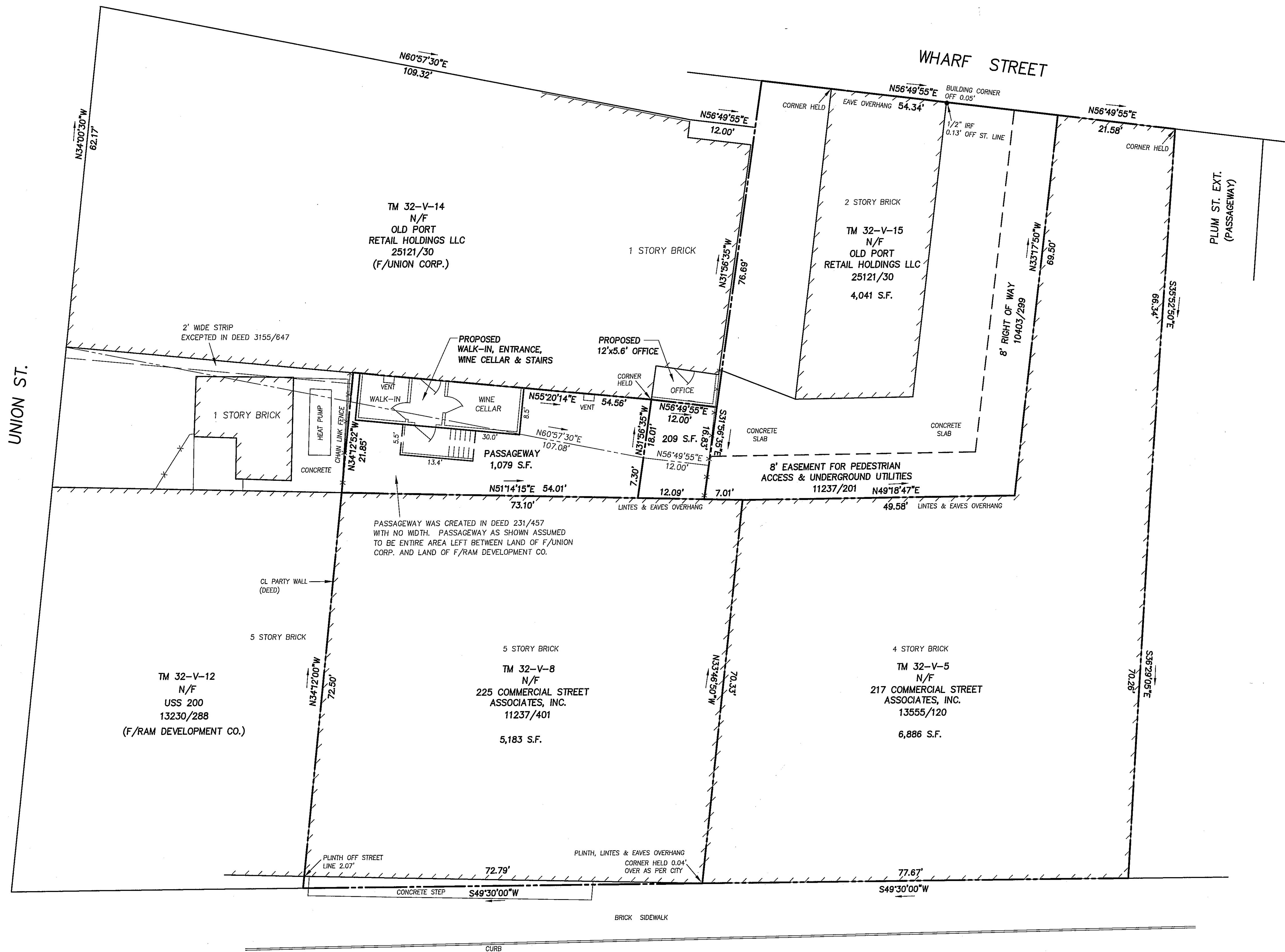


LOCATION MAP  
N.T.S.



2 STORY BRICK  
TM 32-V-15  
N/F  
OLD PORT  
RETAIL HOLDINGS LLC  
25121/30  
4,041 S.F.

TM 32-V-12  
N/F  
USS 200  
13230/288  
(F/RAM DEVELOPMENT CO.)

5 STORY BRICK  
TM 32-V-8  
N/F  
225 COMMERCIAL STREET  
ASSOCIATES, INC.  
11237/401  
5,183 S.F.

4 STORY BRICK  
TM 32-V-5  
N/F  
217 COMMERCIAL STREET  
ASSOCIATES, INC.  
13555/120  
6,886 S.F.

PASSAGEWAY WAS CREATED IN DEED 231/457  
WITH NO WIDTH. PASSAGEWAY AS SHOWN ASSUMED  
TO BE ENTIRE AREA LEFT BETWEEN LAND OF F/UNION  
CORP. AND LAND OF F/RAM DEVELOPMENT CO.

LINTES & EAVES OVERHANG 49.58'

8' EASEMENT FOR PEDESTRIAN ACCESS & UNDERGROUND UTILITIES 11237/201 N49°18'47"E

LINTES & EAVES OVERHANG 7.01'

LINTES & EAVES OVERHANG 7.30'

LINTES & EAVES OVERHANG 7.01'

LINTES & EAVES OVERHANG 7.01'

LINTES & EAVES OVERHANG 7.01'

LINTES & EAVES OVERHANG 7.01'

LINTES & EAVES OVERHANG 7.01'

LINTES & EAVES OVERHANG 7.01'

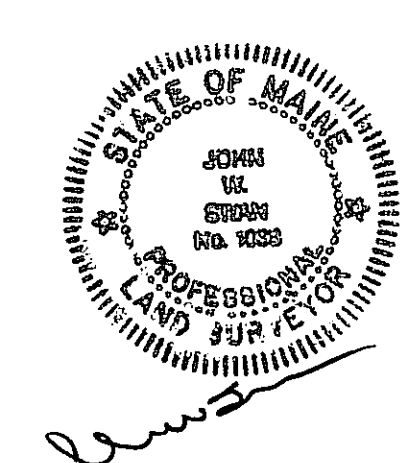
LINTES & EAVES OVERHANG 7.01'

NOTES:

1. NOT ALL IMPROVEMENTS SHOWN.
2. PROPOSED ADDITIONS TAKEN FROM PLAN PREPARED BY ARCHETYPE ARCHITECTS, P.A. DATED NOV. 5, 2009.

PLAN REFERENCES

1. PLAN OF PROPERTY IN PORTLAND, MAINE MADE FOR CARR BROTHERS CO. DATED JAN. 14, 1969 REVISED NOV. 2, 1970 BY H.I. & E.C. JORDAN SURVEYORS.
2. PLAN OF LAND, STANDARD BOUNDARY SURVEY, ON UNION STREET, PORTLAND, MAINE FOR RAM MANAGEMENT COMPANY DATED JULY 31, 1985, REV. 2 11/5/86 BY OWEN HASKELL, INC.
3. SITE PLAN AT 38 WHARF STREET, PORTLAND, MAINE FOR JOSEPH L. SOLEY DATED JUNE 9, 1994 BY OWEN HASKELL, INC.
4. SITE PLAN OF WINSLOW BLOCK, COMMERCIAL AND WHARF STREETS, PORTLAND, MAINE FOR GLJ, INC. DATED FEB. 22, 1994, REV. 9/26/97 BY OWEN HASKELL, INC.



PLAN OF LAND  
AT  
42-50 WHARF STREET  
PORTLAND, MAINE  
MADE FOR  
MICHAEL BOLAND

OWEN HASKELL, INC.

390 U.S. ROUTE ONE, FALMOUTH, ME 04106 (207) 774-0424  
PROFESSIONAL LAND SURVEYORS

Drwn By	OHI	Date	Job No.
Trace By	JLW	NOVEMBER 04, 2009	2009-138
Check By	JWS	Scale	Drwg. No.
Book No.	FILE	1" = 10'	1