

**Equipment Schedule**

Exhaust Hood - Rear Discharge 18 ga. Stainless steel hood, 14'-7" overall, one section is 8'-3" X 48" X 24", other section is 5'-9" X 60" X 24", with 3" airspace on sides, 6" supply plenum on back, full length filter rack, all welded grease shell, removable grease cups, and UL Listed Baffle Filters and Light Fixtures.

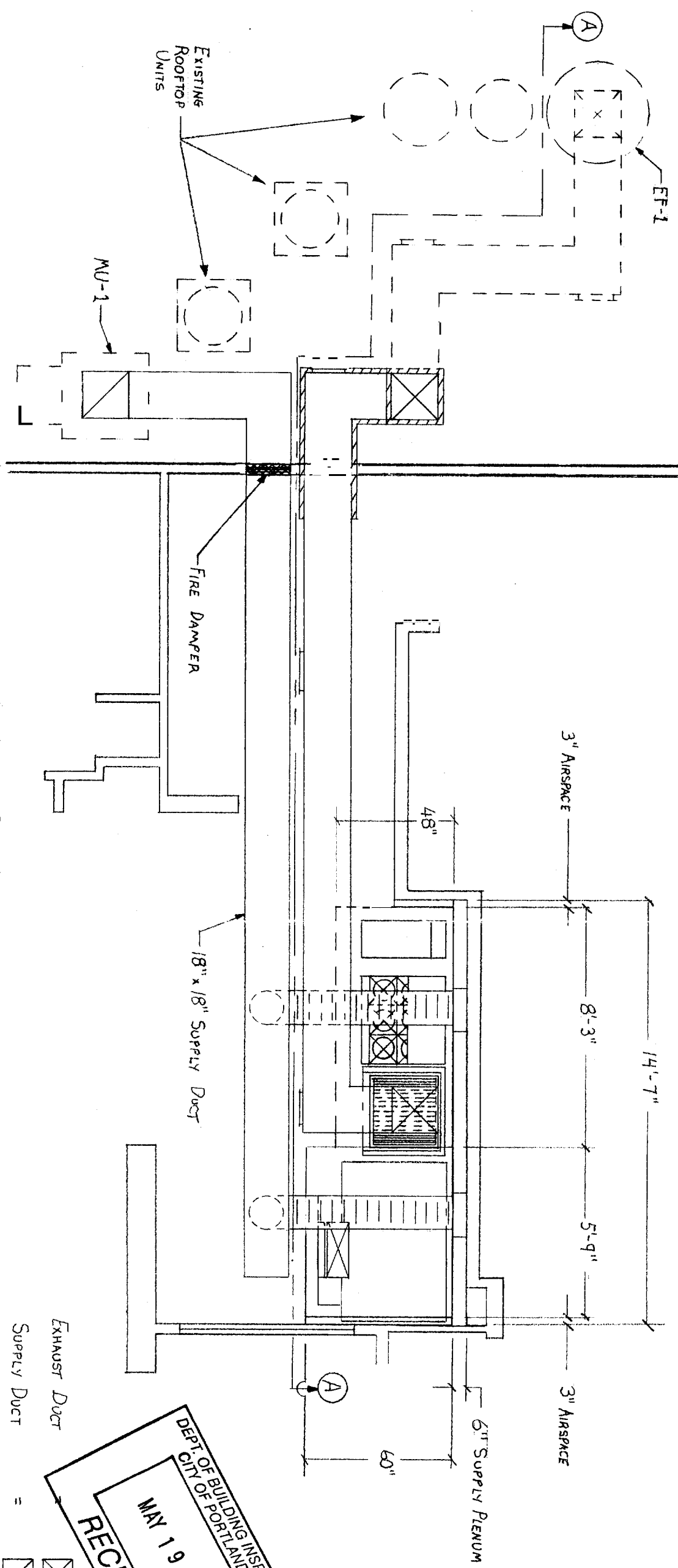
EF-1 - 24" Upblast Exhaust Fan, with 1hp, 120 v. motor, and removable Grease trap. 4500 CFM @ 1950 RPM in a 19" X 19" welded 16 ga. Galvanized duct. Duct to be wrapped with 3M Flame master Duct wrap in necessary areas.

MU-1 - Make-up air System with 15", 1 hp, 120 v. Blower Fan in a filtered housing. Fire damper will be installed at wall penetration. 4500 CFM = 100% returned.

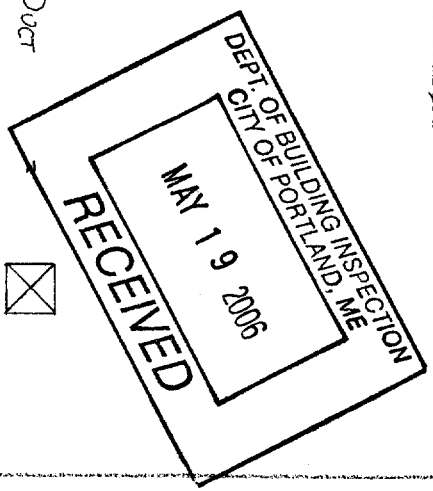
Fire Suppression - A UL-300 Fire suppression system will be installed to cover the hoods, Ducts, and appliances under the hood.

Note: Upon activation of the Fire Suppression System, the Exhaust fans shall remain on, and the supply system and gas feed shall shut down.  
System is built to meet NFPA 96 and all local building codes.

32 U1  
060700

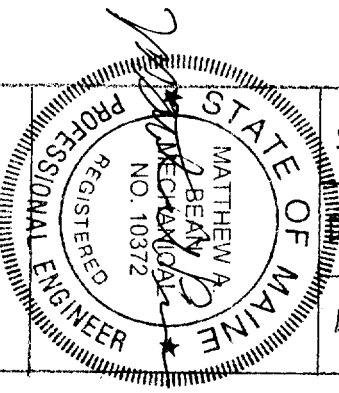


1st FLOOR PLAN VIEW



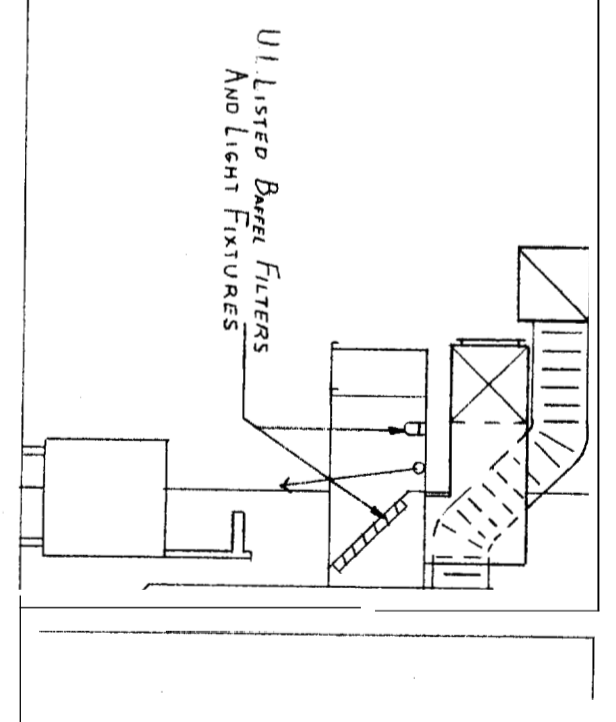
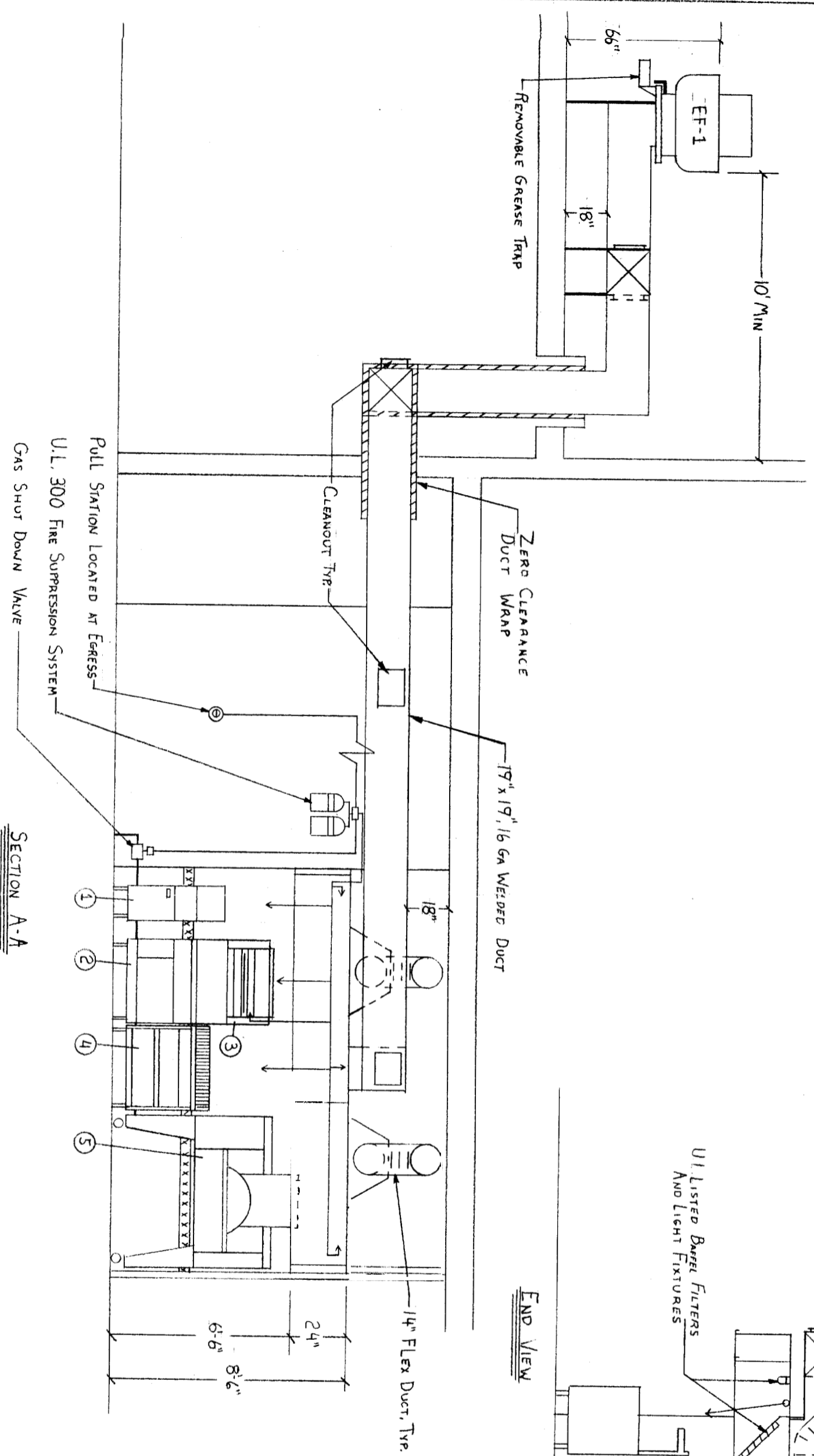
10 Dana St  
Jeffrey H.P.

JOB LOCATION  
VIGNOLIA  
10 DANA STREET, SUITE 100  
PORTLAND, ME. 01401  
207-347-6154



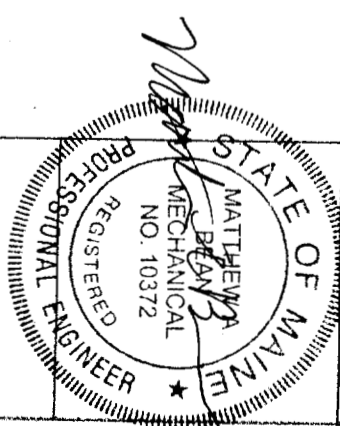
SCALE	1/4"=1'
DRAWN BY	JACK SEIDMAN
DATE	MAY 1, 2006

SYSTEM DESIGNED & BUILT BY  
SEIDMAN BROS.  
25 SIXTH STREET  
CHELSEA MA. 02150  
617-884-8110



- |                               |
|-------------------------------|
| 1. Fryer                      |
| 2. Six Burner Range with Oven |
| 3. Salamander Broiler         |
| 4. Charbroiler                |
| 5. Pizza and Bake Oven        |

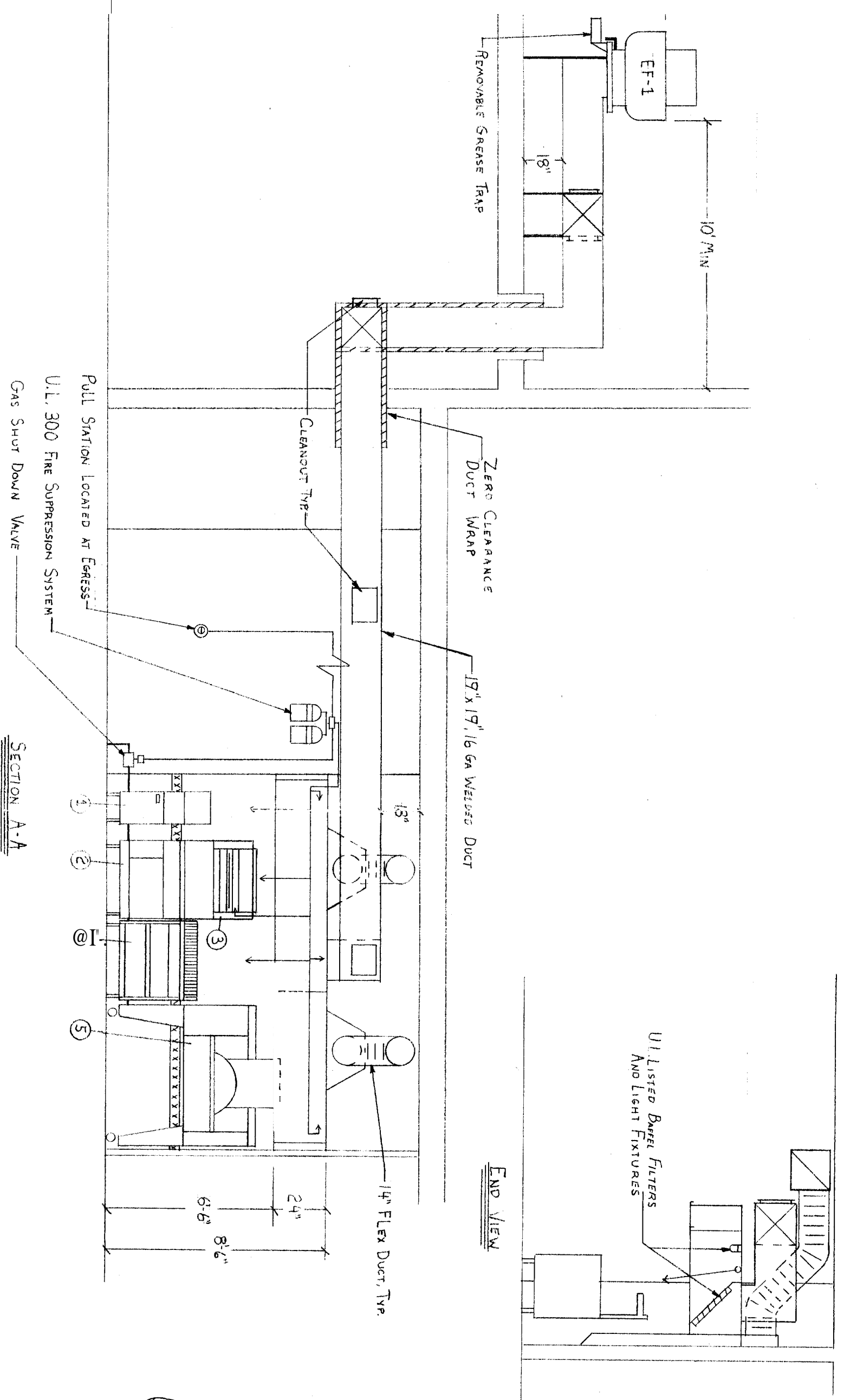
SECTION A-A



JOB LOCATION  
 VIGNOLIA  
 10 DANA STREET, SUITE 100  
 PORTLAND ME 01401  
 207-347-6154

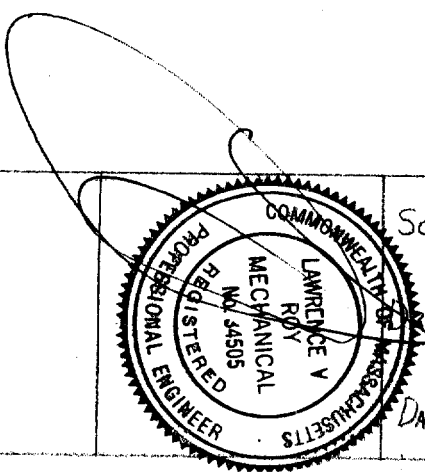
SCALE 1/4" = 1'  
 DRN BY JACK SEIDMAN  
 DATE MAY 1, 2006

SYSTEM DESIGNED & BUILT BY  
 SEIDMAN BROS.  
 25 SIXTH STREET  
 CHELSEA MA. 02150  
 617-884-8110



- |                               |
|-------------------------------|
| 1. Fryer                      |
| 2. Six Burner Range with Oven |
| 3. Salamander Broiler         |
| 4. Charbroiler                |
| 5. Pizza and Bake Oven        |

JOB LOCATION  
 VIGNOLIA  
 10 DANA STREET, SUITE 100  
 PORTLAND ME 01401  
 207-347-6154



SCALE 1/4" = 1'  
 DRAWN BY JACK SEIDMAN  
 DATE MAY 1, 2006

SYSTEM DESIGNED & BUILT BY  
 SEIDMAN BROS.  
 25 SIXTH STREET  
 CHELSEA MA. 02150  
 617-884-8110

**Equipment Schedule**

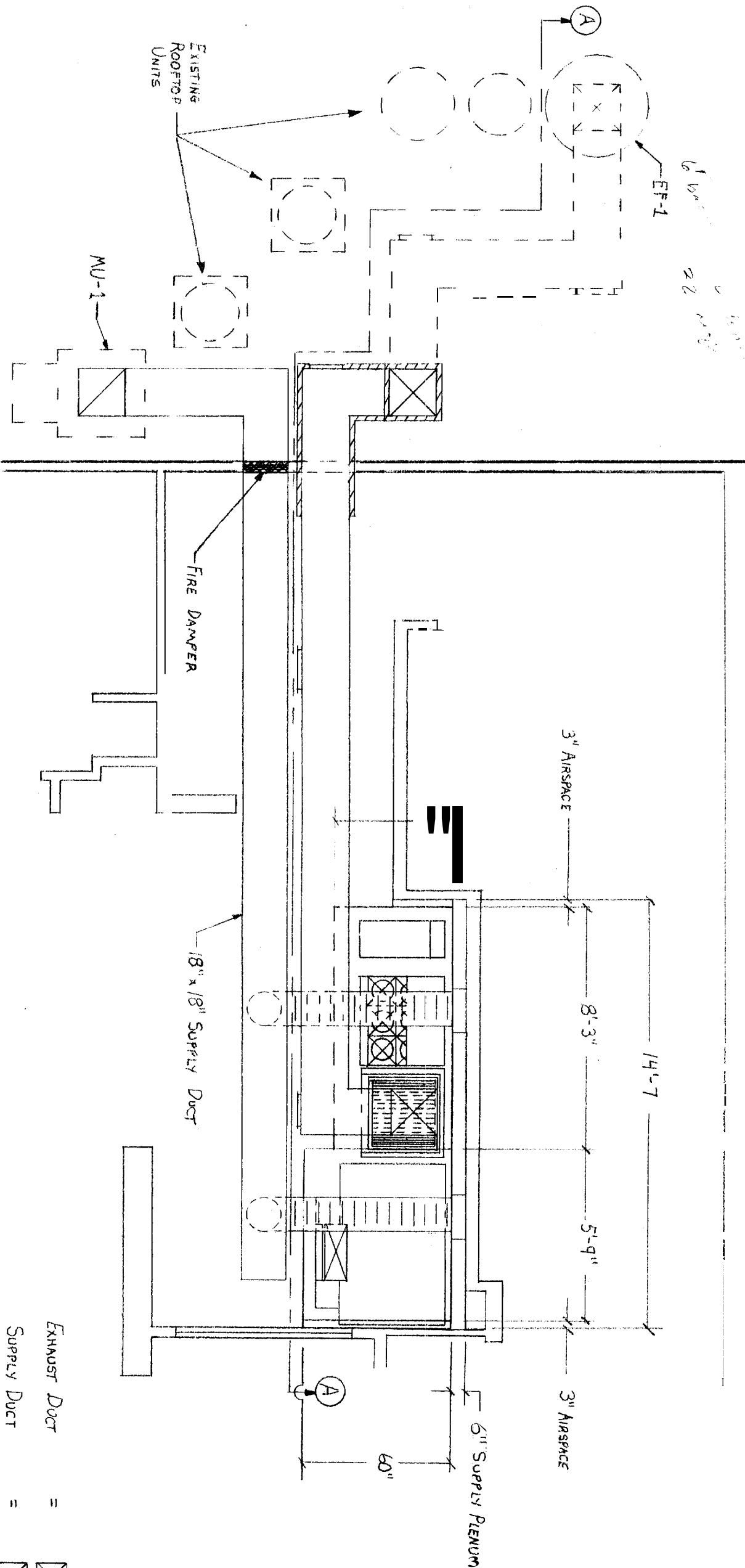
Exhaust Hood - Rear Discharge 18 ga. Stainless steel hood, 14'-7" overall, one section is 8'-3" X 48" X 24", other section is 5'-9" X 60" X 24" with 3" airspace on sides, 6" supply plenum on back, full length filter rack, all welded grease shell, removable grease cups, and UL Listed Baffle Filters and Light Fixtures.

EF-1 - 24" Upblast Exhaust Fan, with 1hp, 120 v. motor, and removable Grease trap. 4500 CFM @ 1950 FPM in a 19" X 19" welded 16 ga. Galvanized duct. Duct to be wrapped with 3M Flame master Duct wrap in necessary areas.

MU-1 - Make-up air System with 15", 1 hp, 120 v. Blower Fan in a filtered housing. Fire damper will be installed at wall penetration. 4500 CFM = 100% returned.

Fire Suppression - A UL-300 Fire suppression system will be installed to cover the hoods, Ducts, and appliances under the hood.

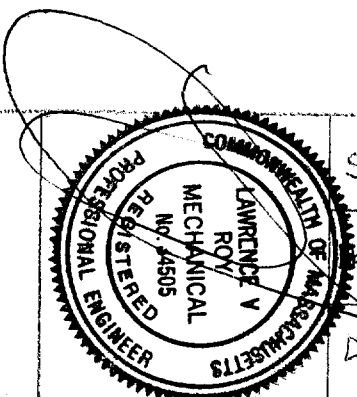
Note: Upon activation of the Fire Suppression System, the Exhaust fans shall remain on, and the supply system and gas feed shall shut down. System is built to meet NFPA 96 and all local building codes.



1<sup>ST</sup> FLOOR PLAN VIEW

- EXHAUST DUCT = [Symbol]
- SUPPLY DUCT = [Symbol]
- CLEANOUT = [Symbol]

JOB LOCATION  
 VIGNOLIA  
 10 DANA STREET, SUITE 100  
 PORTLAND, ME. 01401  
 207-347-6154



SCALE	1/4" = 1'
DRAWN BY	JACK SEIDMAN
DATE	MAY 1, 2006

SYSTEM DESIGNED & BUILT BY  
 SEIDMAN BROS.  
 25 SIXTH STREET  
 CHELSEA MA. 02150  
 617-884-8110