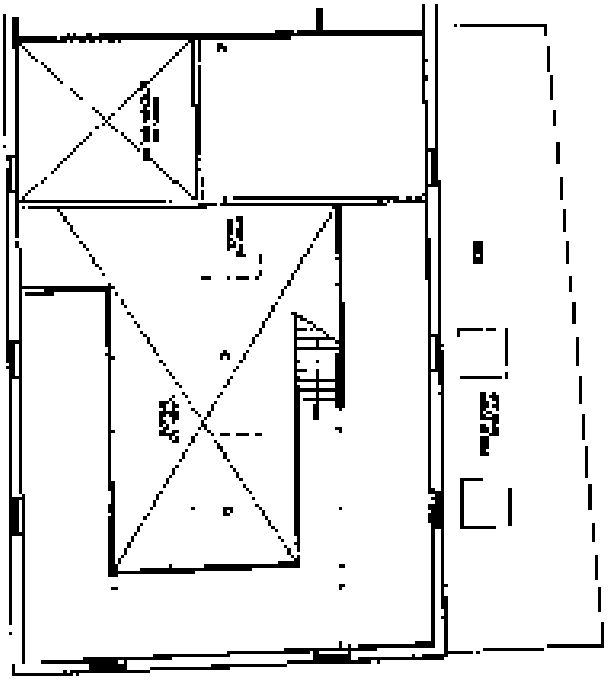
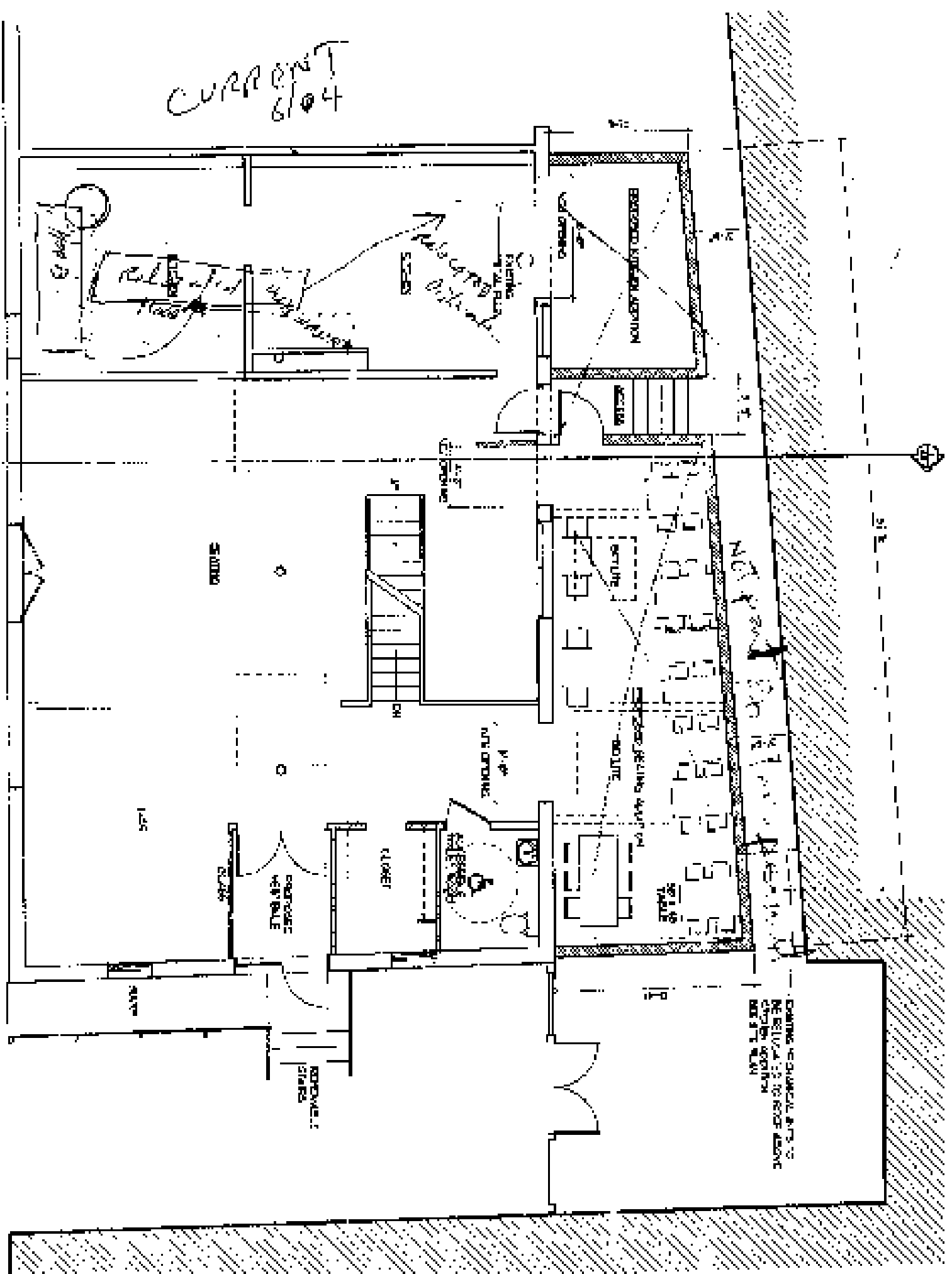


Cinque Terre

AREA 2		SEATING	
200' x 100' FLOOR	200	SEATING	2 (100' x 100')
200' x 100' FLOOR	200	SEATING	2 (100' x 100')
200' x 100' FLOOR	200	SEATING	2 (100' x 100')
200' x 100' FLOOR	200	SEATING	2 (100' x 100')
200' x 100' FLOOR	200	SEATING	2 (100' x 100')
200' x 100' FLOOR	200	SEATING	2 (100' x 100')
200' x 100' FLOOR	200	SEATING	2 (100' x 100')
200' x 100' FLOOR	200	SEATING	2 (100' x 100')
200' x 100' FLOOR	200	SEATING	2 (100' x 100')
200' x 100' FLOOR	200	SEATING	2 (100' x 100')



2 MEZZANINE LEVEL
100' x 100' on EXIST



1 FIRST FLOOR PLAN
100' x 100' on EXIST

EXHIBIT AND NOTES

HT
AS
LO
AL
W
S
ET
B

BROWNE 2" x 4" PLATE ON TOP OF WALL FOR DECK BEARING

MAX STAIR RISER = 7"
MIN STAIR TREAD = 11"
HANDRAILS @ 2'0"

3'-9"

9'-2"

3'-0"
1/2" = 1'-0"

metal stud wall over
concrete

STAIRS
START LINE TO
FINISH AREA

ACCESS

REMOVE CONDE

5'-0"
NEW OPENING

WILL EXIST OPENING

NEW WALL

B-2



U7

REMOVING EXISTING WALL
1'-0" MIN

SEATING

PROPOSED
1-0-19

