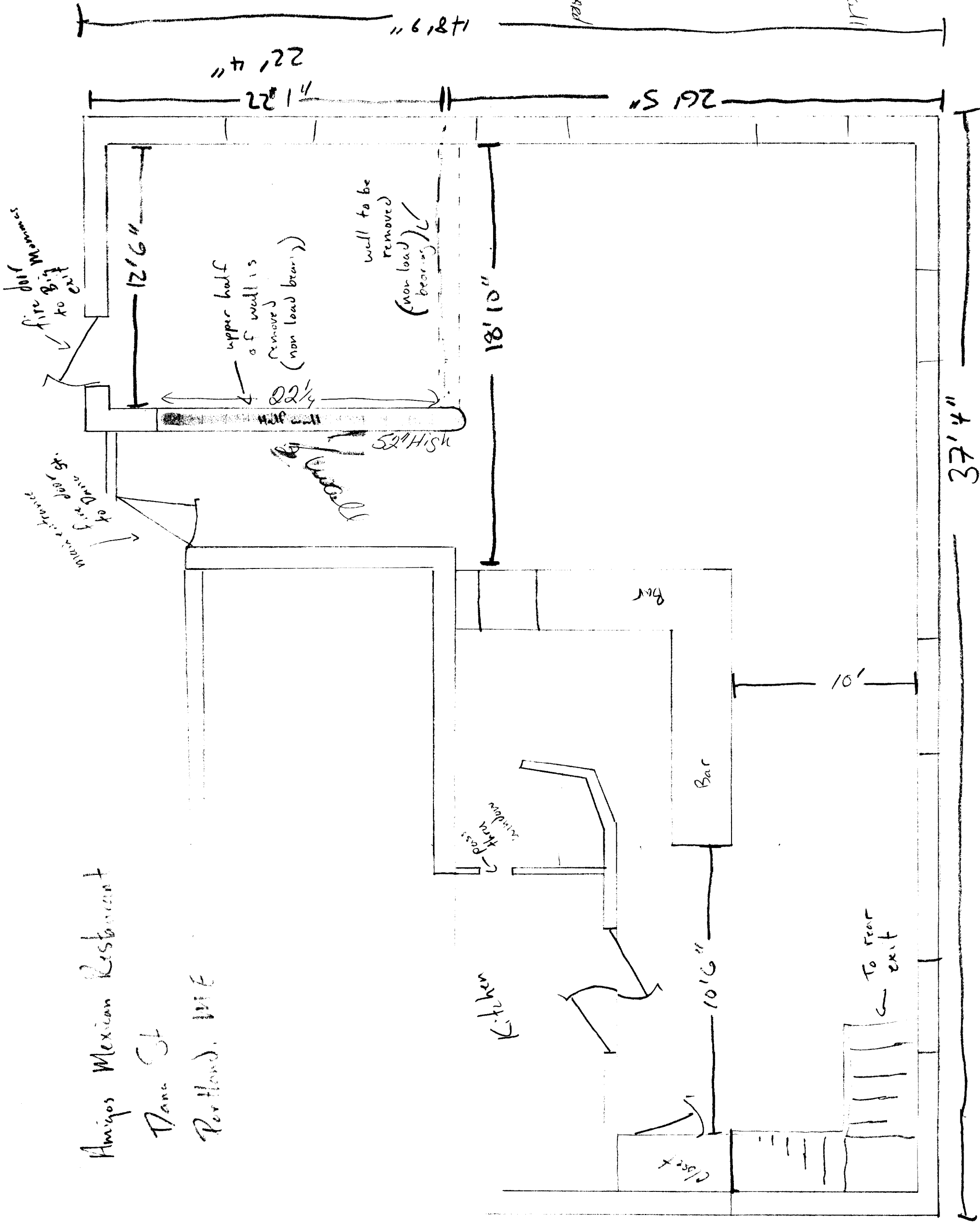


Amigos Mexican Restaurant
Dana St
Portland, ME



Full wall to 1/2 wall
→ Remove wall
→ No wall

Materials

APPROX. 70 FT 2x4
Scaffolding

4 Sheets 4x8 Wall Board

#10 Nails

Day Wall Screws

Day Wall Tape

summers
at fire
wall
to
fire
door

will to be removed
(non load bearing)

upper half of wall is removed
(non load bearing)

2x2 1/4

52" High

Bar

Bar

10'

pass thru window

Kitchen

Close

To rear exit

7' 43"