



Submittal Data Sheet

5 Ton VRV-IV S Heat Pump Unit

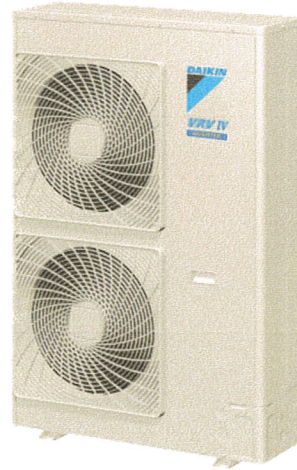
RXTQ60TAVJU

FEATURES

- Variable Refrigerant Temperature (VRT) technology allows VRV IV S series to deliver improved efficiencies and year round comfort
- Improved efficiencies with SEER values up to 18.0 and HSPF values up to 10.0
- Engineered with highly reliable Daikin Swing compressors
- All inverter compressors to increase efficiency and avoid starting current rush
- Can provide heating down to -4°F
- Added safety with optional auto changeover to auxiliary heat
- Easier installation with over 60% weight reduction compared to VRV III S

BENEFITS

- Single-phase technology enables installation in light commercial and residential applications
- Broader diversity with up to 10 indoor units connectivity
- Space saving compact design
- Design flexibility with long piping lengths up to 984ft total and 49ft vertical separation between indoor units
- Designed with reduced MOP to optimize installation costs
- Backed by best in class 10-years Parts Limited Warranty and 10-years Replacement Compressor Limited Warranty*



VRV IV





Submittal Data Sheet

5 Ton VRV-IV S Heat Pump Unit

RXTQ60TAVJU

PERFORMANCE

Outdoor Unit Model No.	RXTQ60TAVJU	Outdoor Unit Name:	5 Ton VRV-IV S Heat Pump Unit
Type:	Heat Pump		
Rated Cooling Conditions:	Indoor (°F DB/DB): 80 / 67 Ambient (°F DB/WB): 95 / 75	Rated Heating Conditions:	Indoor (°F DB/WB): 70 / 60 Ambient (°F DB/WB): 47 / 43
Rated Piping Length(ft):			
Rated Height Difference (ft):			
Rated Cooling Capacity (Btu/hr):	57,000	Rated Heating Capacity (Btu/hr):	57,000
Cooling Input Power (kW):	5.82	Heating Input Power (kW):	4.18
EER (Non-Ducted/Ducted):	9.80 / 9.20	Heating COP (Non-Ducted/Ducted):	/
SEER (Non-Ducted/Ducted):	18.00 / 15.50	HSPF (Non-Ducted/Ducted):	10.2 / 10.5
Max/Min Cooling Capacity (Btu/hr):	/	Max/Min Heating Capacity (Btu/hr):	

OUTDOOR UNIT DETAILS

Power Supply (V/Hz/Ph):	208-230 / 60 / 1	Compressor Type:	Inverter
Power Supply Connections:		Capacity Control Range (%):	14 - 100
Min. Circuit Amps MCA (A):	29.10	Airflow Rate (H) (CFM):	3,741
Max Overcurrent Protection (MOP) (A):	35.00	Gas Pipe Connection (inch):	3/4
Max Starting Current MSC(A):		Liquid Pipe Connection (inch):	3/8
Rated Load Amps RLA(A):	23.2	Sound Pressure (H) (dBA):	57
Dimensions (HxWxD) (in):	52-15/16 x 35-7/16 x 12-5/8	Sound Power Level (dBA):	74
Net Weight (lb):	225		



Submittal Data Sheet

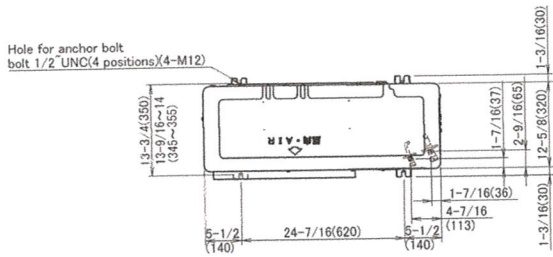
5 Ton VRV-IV S Heat Pump Unit

RXTQ60TAVJU

SYSTEM DETAILS

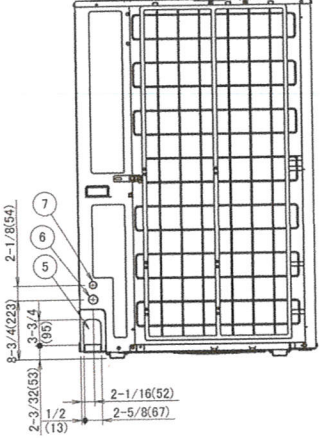
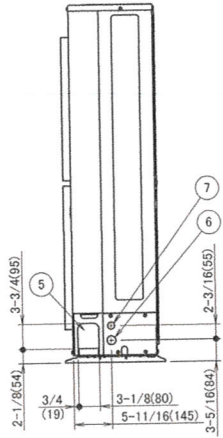
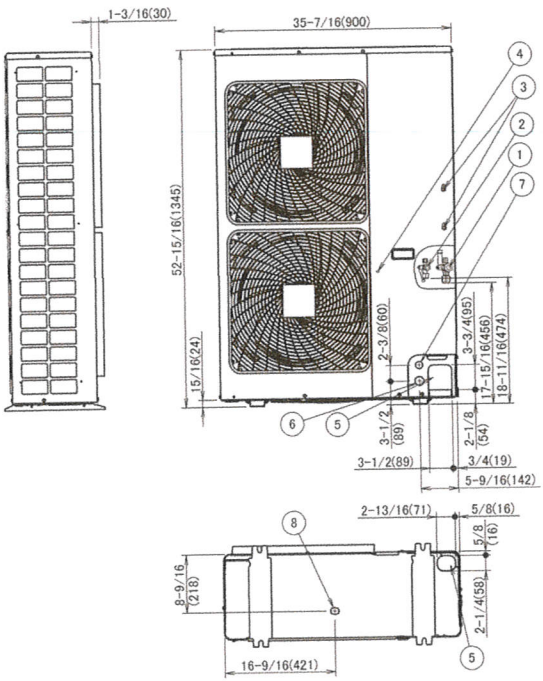
Refrigerant Type:	R-410A	Cooling Operation Range (°F DB):	23 - 122
Holding Refrigerant Charge (lbs):	7.9	Heating Operation Range (°F WB):	-4 - 60
Additional Charge (lb/ft):		Max. Pipe Length (Vertical) (ft):	98
Pre-charge Piping (Length) (ft):	25	Cooling Range w/Baffle (°F DB):	-
Max. Pipe Length (Total) (ft):	984	Heating Range w/Baffle (°F WB):	-
Max Height Separation (Ind to Ind ft):			

DIMENSIONAL DRAWING



Unit:in. (mm)

NOTE: GAS PIPE CONNECTION IS IN THE ASSESSOTY SET.
LIQUID PEPE CONNECTION IS THE SITE PROVEDES.





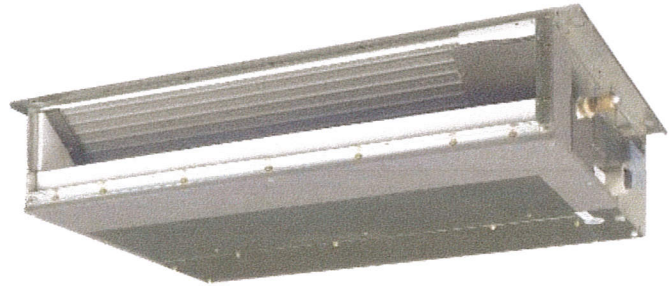
Submittal Data Sheet

2.0-Ton Slim Duct Built-in Concealed Ceiling Unit

FXDQ24MVJU

FEATURES

- The slim height, at only 7-7/8", makes it suitable for most of the applications where attic / bulkhead space is limited
- With a sound level as low as 32dBA, these systems are among the quietest on the market
- Washable filter included
- Built-in condensate pump
- Blends unobtrusively with any interior decor; only the suction and discharge grills are visible
- Standard Limited Warranty: 10-year warranty on compressor and all parts





Submittal Data Sheet

2.0-Ton Slim Duct Built-in Concealed Ceiling Unit

FXDQ24MVJU

PERFORMANCE

Indoor Unit Model No.	FXDQ24MVJU	Indoor Unit Name:	2.0-Ton Slim Duct Built-in Concealed Ceiling Unit
Type:	Ducted	Rated Cooling Conditions:	Indoor (°F DB/WB): 80 / 67 Ambient (°F DB/WB): 95 / 75
Rated Cooling Capacity (Btu/hr):	24,000	Rated Heating Conditions:	Indoor (°F DB/WB): 70 / 70 Ambient (°F DB/WB): 47 / 43
Sensible Capacity (Btu/hr):	16,400	Rated Piping Length(ft):	
Cooling Input Power (kW):	0.190	Rated Height Separation (ft):	
Rated Heating Capacity (Btu/hr):	27,000		
Heating Input Power (kW):	0.18		

INDOOR UNIT DETAILS

Power Supply (V/Hz/Ph):	208-230 / 60 / 1	Airflow Rate (H/L) (CFM):	580/460
Power Supply Connections:	L1, L2, Ground	Moisture Removal (Gal/hr):	
Min. Circuit Amps MCA (A):	1.40	Gas Pipe Connection (inch):	5/8
Max Overcurrent Protection (MOP) (A):		Liquid Pipe Connection (inch):	3/8
Dimensions (HxWxD) (in):	7-7/8 x 43-5/16 x 24-7/16	Condensate Connection (inch):	1-1/32
Panel (HxWxD) (in):		Sound Pressure (H/L) (dBA):	36/32
Net Weight (lb):	71	Sound Power Level (dBA):	53
Panel Weight (lb):		Ext. Static Pressure (Rated/Max) (inWg):	0.17 / 0.17

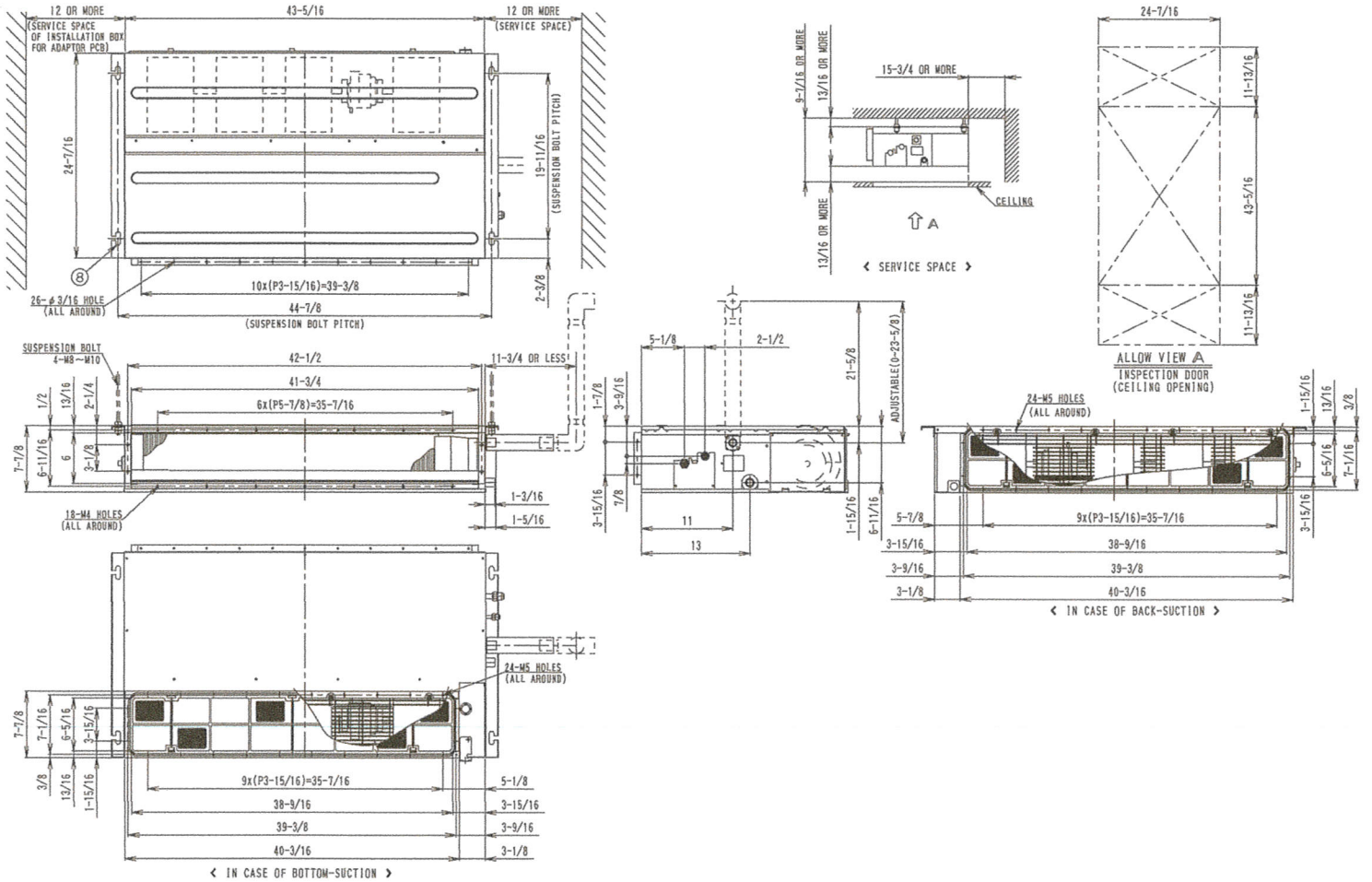
Submittal Data Sheet

2.0-Ton Slim Duct Built-in Concealed Ceiling Unit

FXDQ24MVJU

DIMENSIONAL DRAWING

FXDQ24MVJU
Unit (in.)



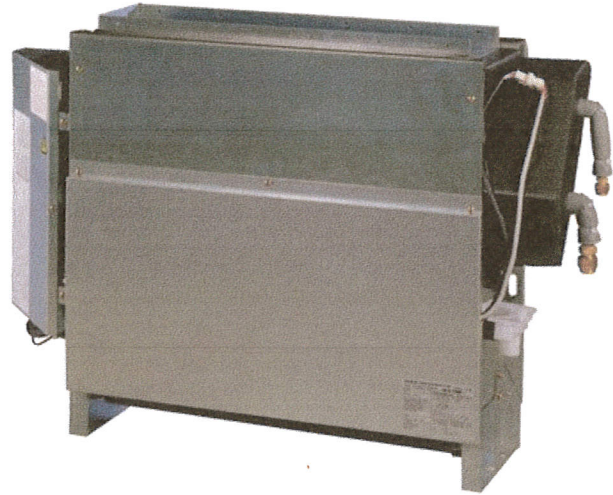


Submittal Data Sheet

2.0-Ton Concealed Floor Standing Unit
FXNQ24MVJU9

FEATURES

- Ideal for installation beneath a window
- Unit requires minimal installation space
- Fitted with a washable long-life filter
- Standard Limited Warranty: 10-year warranty on compressor and all parts





Submittal Data Sheet

2.0-Ton Concealed Floor Standing Unit

FXNQ24MVJU9

PERFORMANCE

Indoor Unit Model No.	FXNQ24MVJU9	Indoor Unit Name:	2.0-Ton Concealed Floor Standing Unit
Type:	Floor Standing	Rated Cooling Conditions:	Indoor (°F DB/WB): 80 / 67 Ambient (°F DB/WB): 95 / 75
Rated Cooling Capacity (Btu/hr):	24,000	Rated Heating Conditions:	Indoor (°F DB/WB): 70 / 70 Ambient (°F DB/WB): 47 / 43
Sensible Capacity (Btu/hr):	15,900	Rated Piping Length(ft):	
Cooling Input Power (kW):	0.110	Rated Height Separation (ft):	
Rated Heating Capacity (Btu/hr):	27,000		
Heating Input Power (kW):	0.11		

INDOOR UNIT DETAILS

Power Supply (V/Hz/Ph):	208-230 / 60 / 1	Airflow Rate (H/L) (CFM):	560/420
Power Supply Connections:	L1, L2, Ground	Moisture Removal (Gal/hr):	
Min. Circuit Amps MCA (A):	0.60	Gas Pipe Connection (inch):	5/8
Max Overcurrent Protection (MOP) (A):		Liquid Pipe Connection (inch):	3/8
Dimensions (HxWxD) (in):	24 x 53-1/8 x 8-5/8	Condensate Connection (inch):	53/64
Panel (HxWxD) (in):		Sound Pressure (H/L) (dBA):	41/36
Net Weight (lb):	60	Sound Power Level (dBA):	
Panel Weight (lb):		Ext. Static Pressure (Rated/Max) (inWg):	0.00 / 0.00



Submittal Data Sheet
2.0-Ton Concealed Floor Standing Unit
FXNQ24MVJU9

DIMENSIONAL DRAWING

