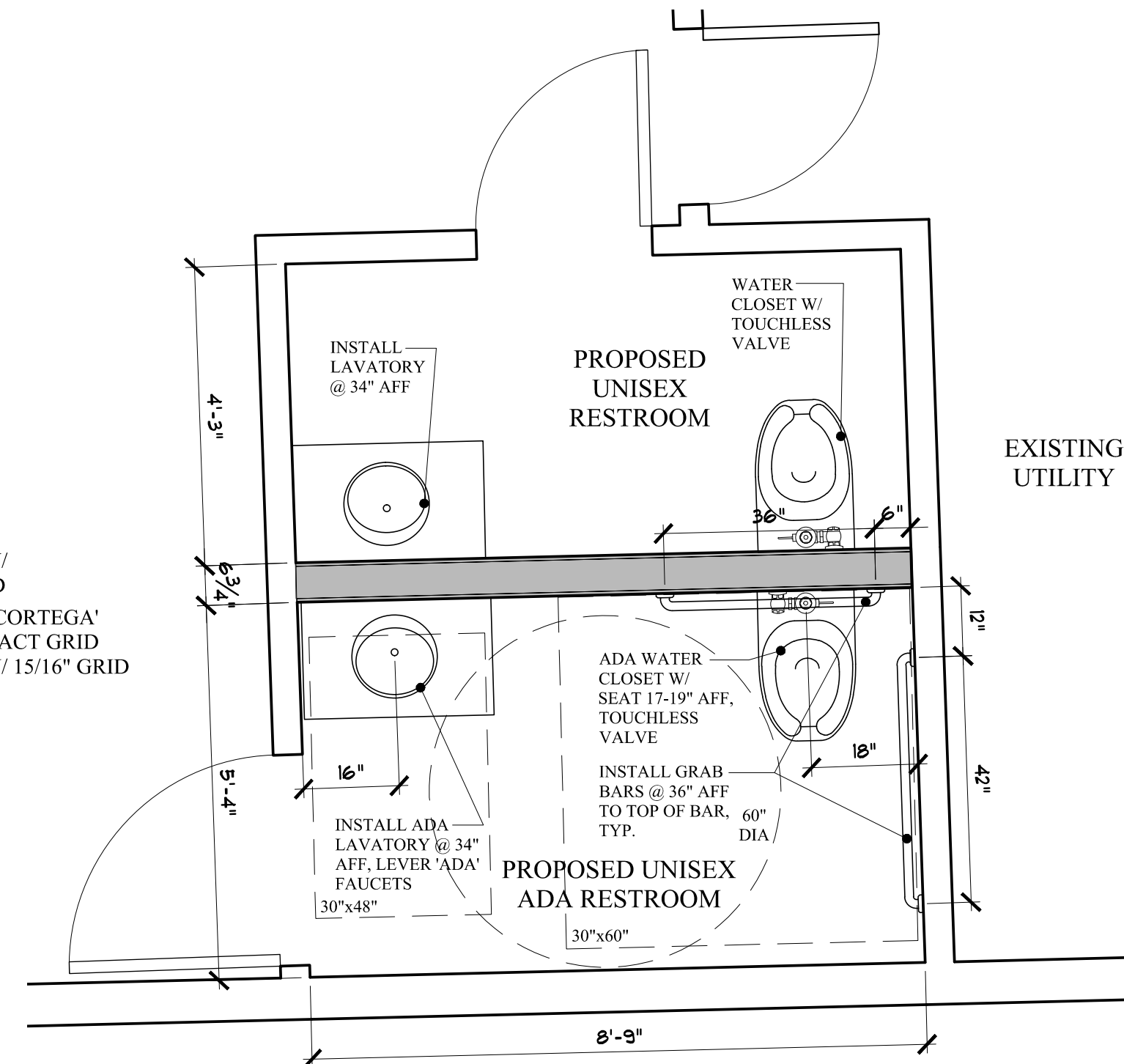
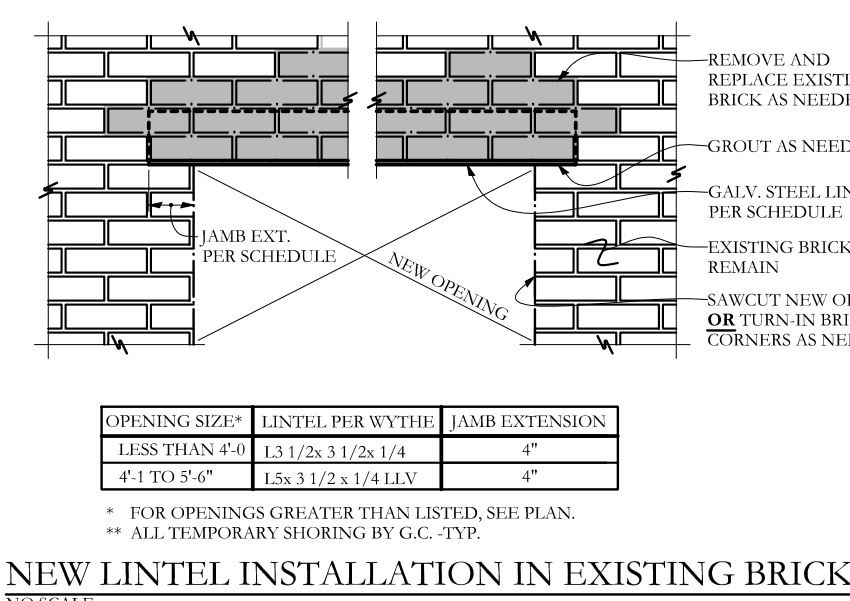


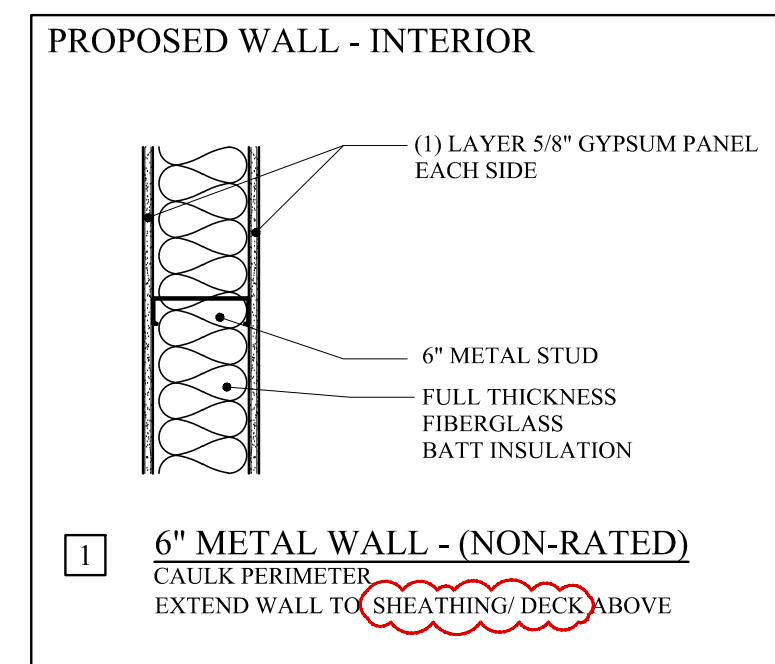
REFLECTED CEILING PLAN
SCALE: 1/8"=1'-0"



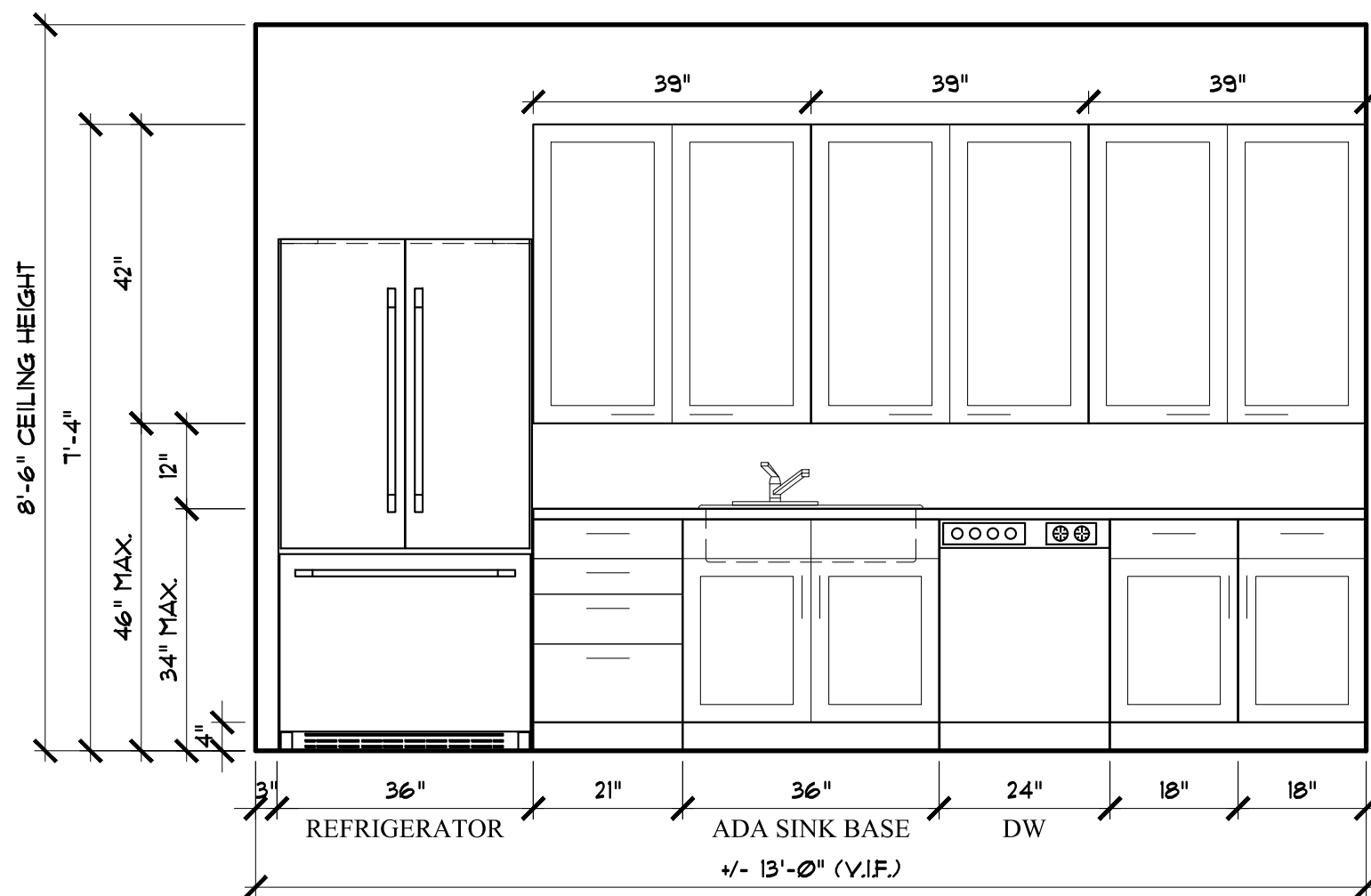
ENLARGED RESTROOM FLOOR PLAN
SCALE: 1/2"=1'-0"



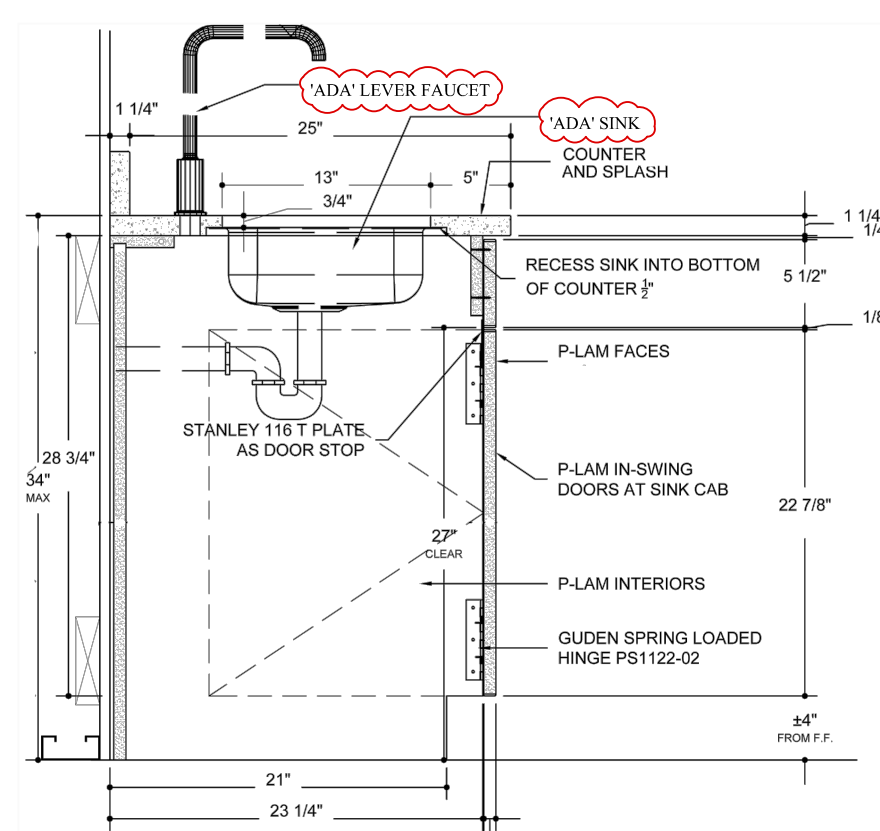
NEW LINTEL INSTALLATION IN EXISTING BRICK
N/S SCALE



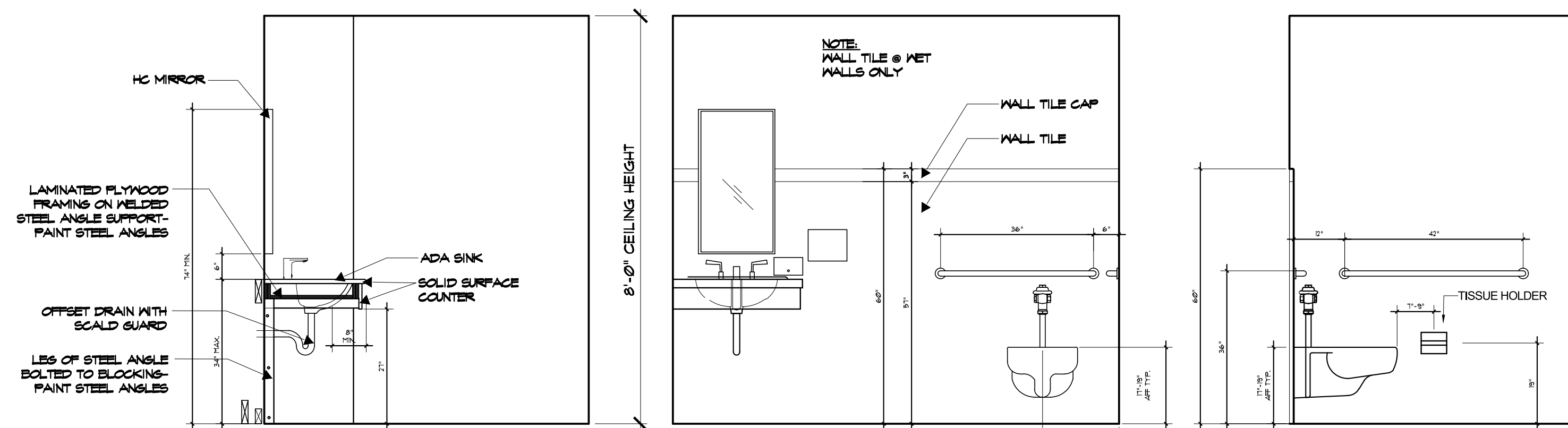
6" METAL WALL - (NON-RATED)
CAULK PERIMETER
EXTEND WALL TO SHEATHING DECK ABOVE



INTERIOR KITCHENETTE ELEVATION
SCALE: 1/2"=1'-0"

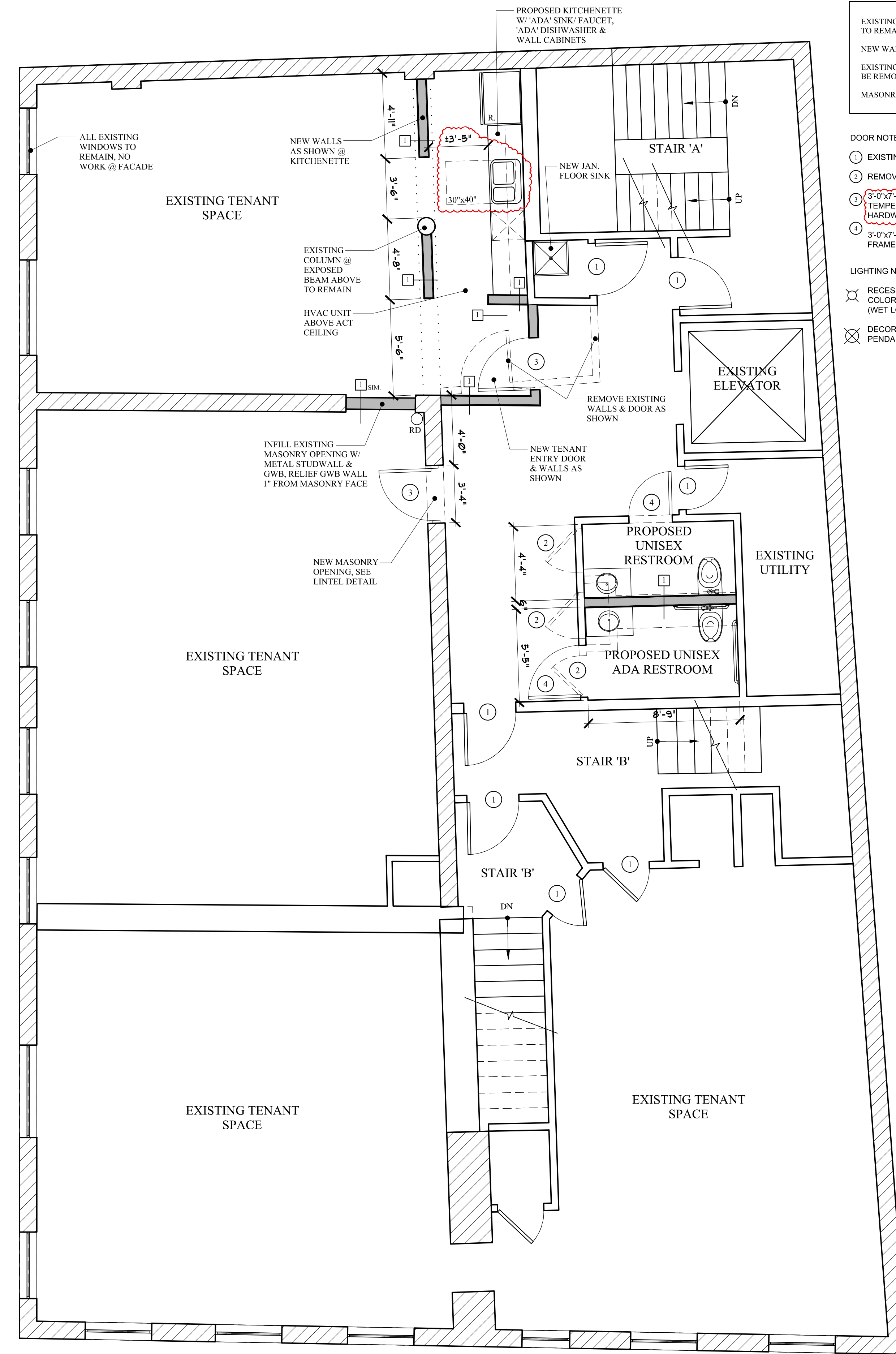


ADA SINK BASE SECTION
SCALE: N.T.S.



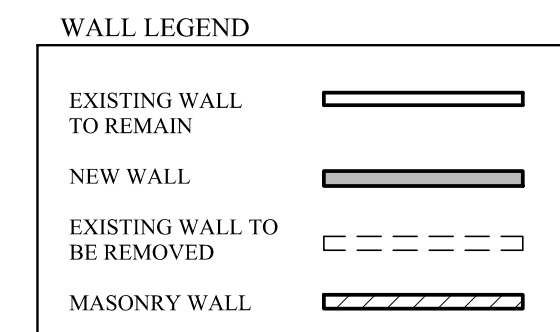
INTERIOR RESTROOM ELEVATIONS
SCALE: 1/2"=1'-0"

MOULTON STREET



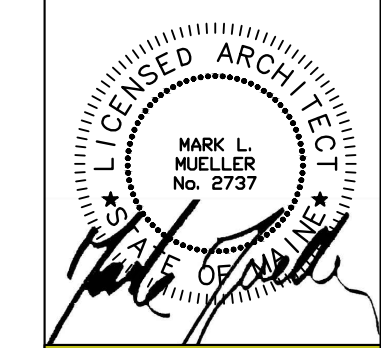
COMMERCIAL STREET

PROPOSED FLOOR PLAN
SCALE: 1/4"=1'-0"



- DOOR NOTES:**
- 1 EXISTING DOOR TO REMAIN
 - 2 REMOVE EXISTING DOOR
 - 3 3'-0"x7'-0" - NEW SOLID WOOD SLAB (FULL LIFE TEMPERED GLAZING) W/ H.M. FRAME, LEVER HARDWARE & CLOSER
 - 4 3'-0"x7'-0" - NEW SOLID WOOD SLAB W/ H.M. FRAME, LEVER HARDWARE & CLOSER.

- LIGHTING NOTES:**
- RECESSED LED DOWNLIGHT, 3000K COLOR TEMP. (WET LOCATION FIXTURE @ RESTROOMS)
 - DECORATIVE LED ARCHITECTURE PENDANT, 3000K COLOR TEMP.



MARK L. MUELLER ARCHITECTS
A.I.A.
100 Commercial Street, Suite 205
Portland, Maine 04101
Phone/Fax 207.774.9057
Email: rfm@muellerarchitects.com

© 2017 FRI 2017
MARK MUELLER ARCHITECTS

PROJECT: MALONE COMMERCIAL BROKERS
5 MOULTON STREET
PORTLAND, MAINE

REVISIONS
DATE
JULY 2017
PROJECT
MALONE RESTROOMS
DRAWN BY
MRP
CHECK BY
MAM

REVISED: OCTOBER 03, 2017
PERMIT SET: AUGUST 01, 2017

A-1.1