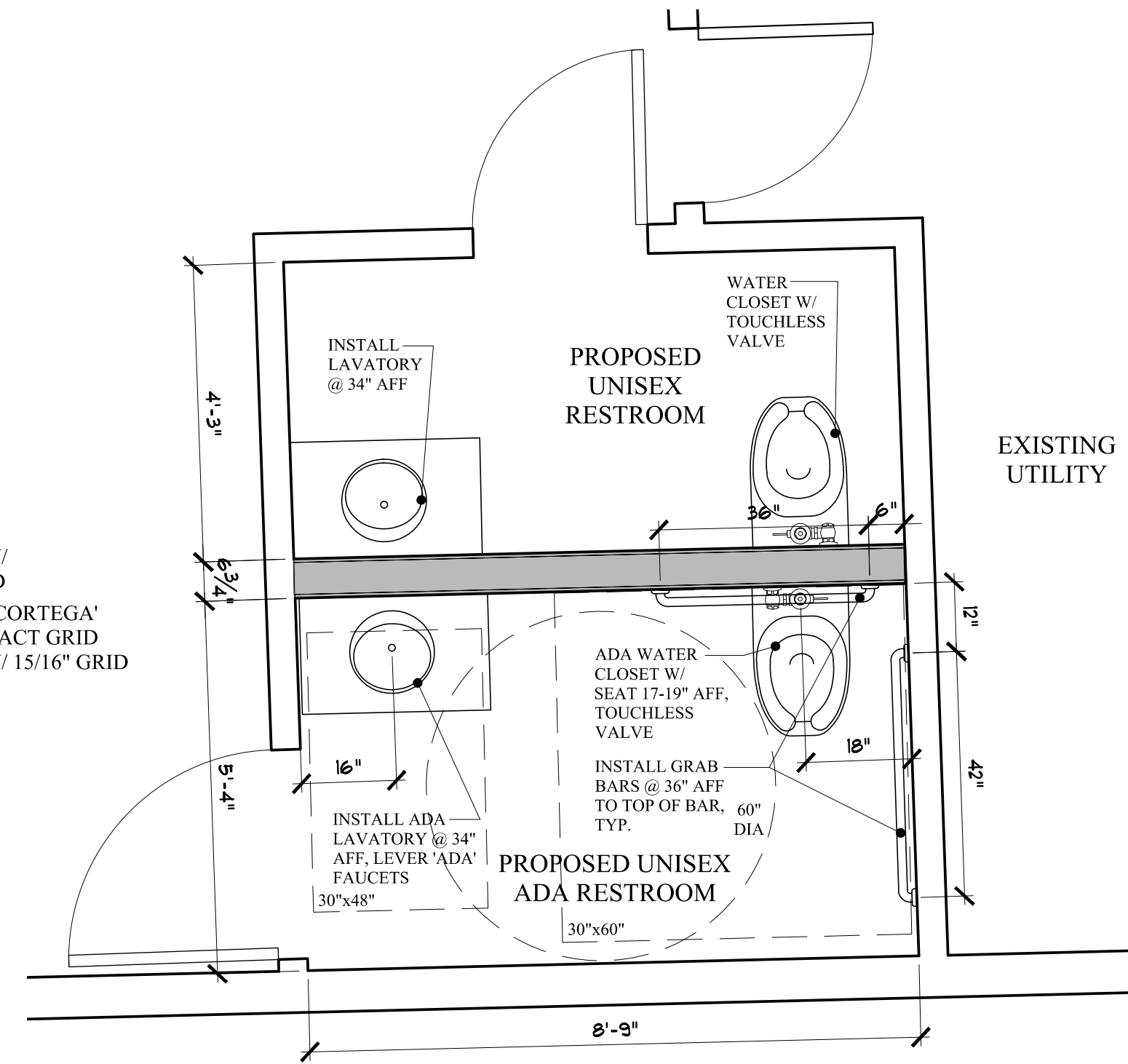
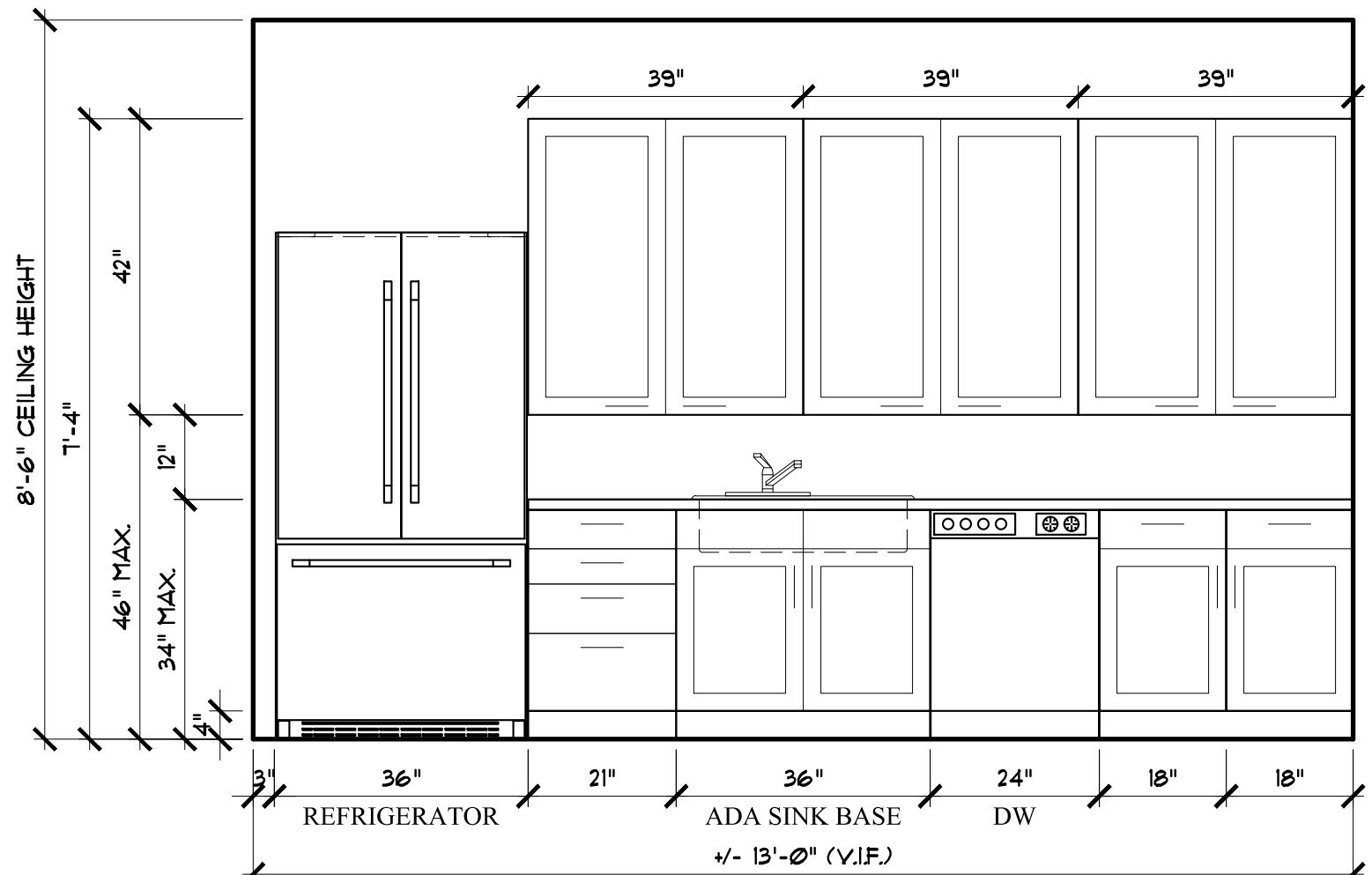
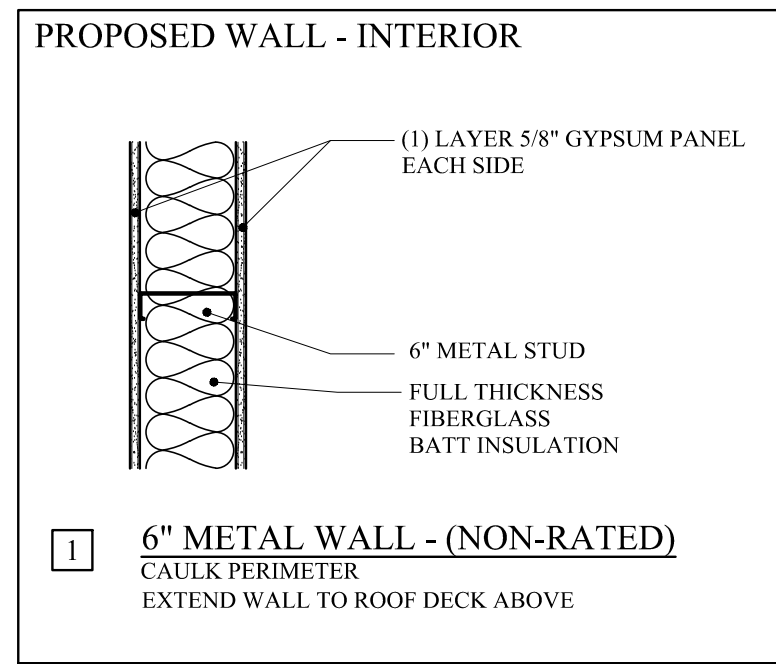
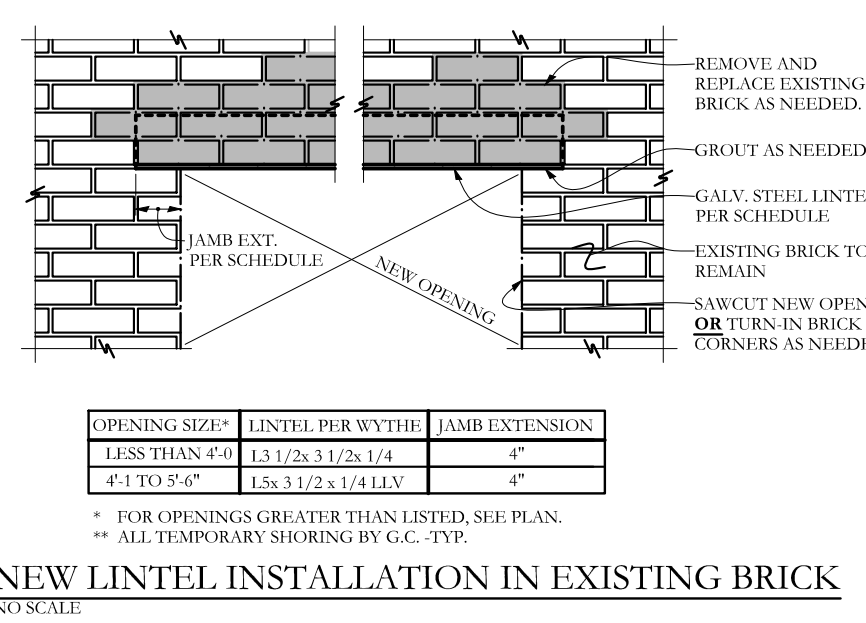


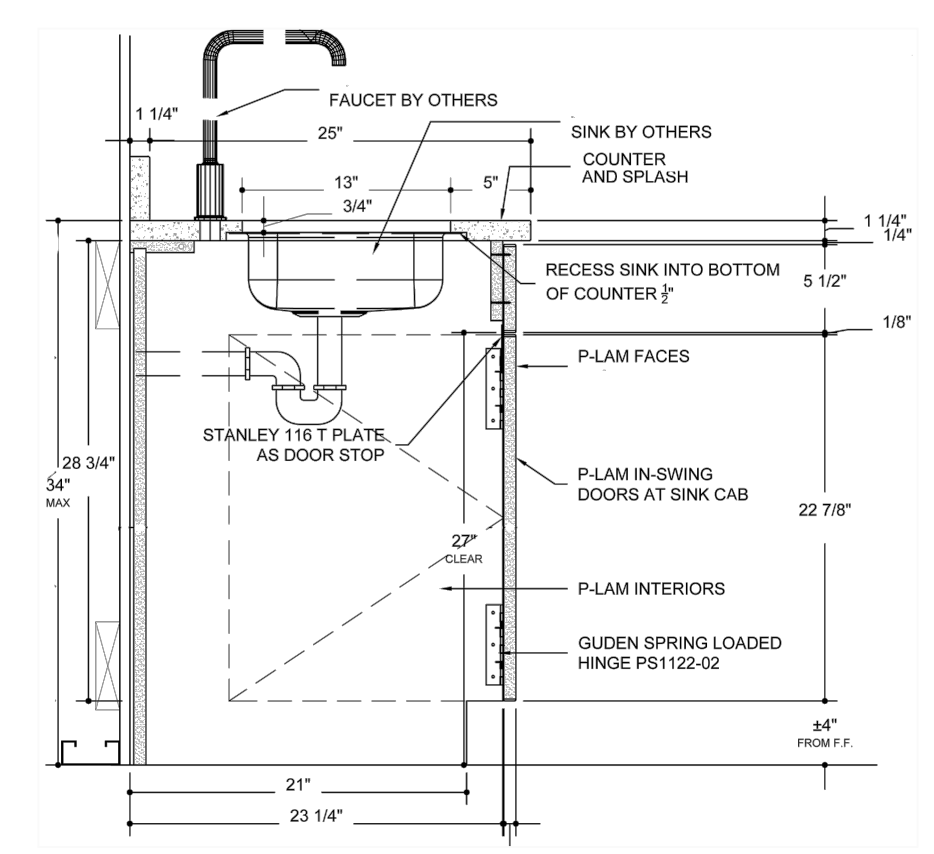
REFLECTED CEILING PLAN
SCALE: 1/8"=1'-0"



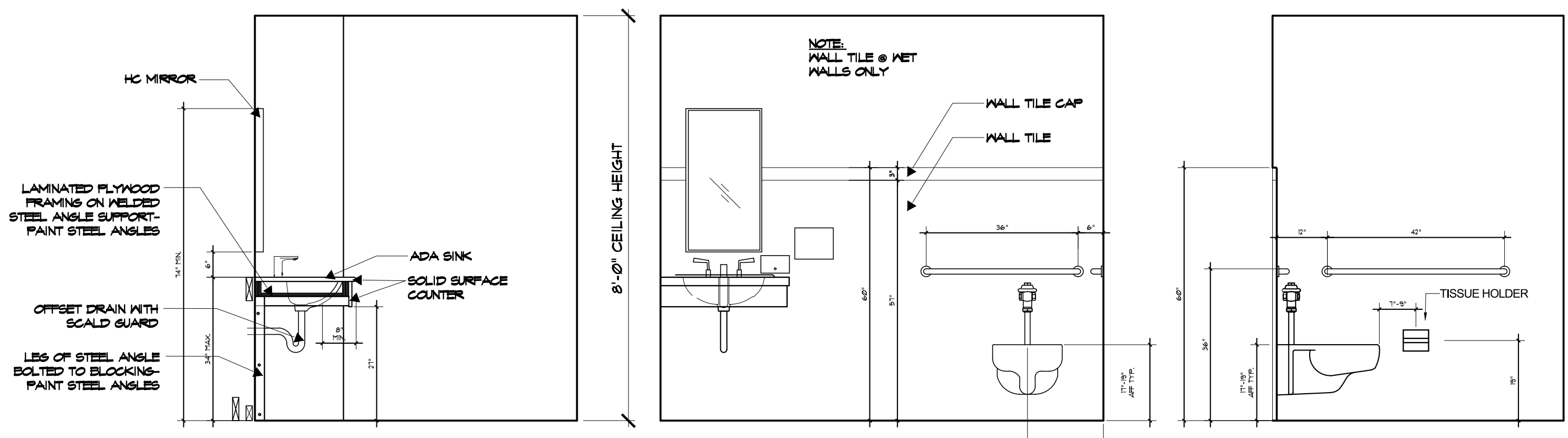
ENLARGED RESTROOM FLOOR PLAN
SCALE: 1/2"=1'-0"



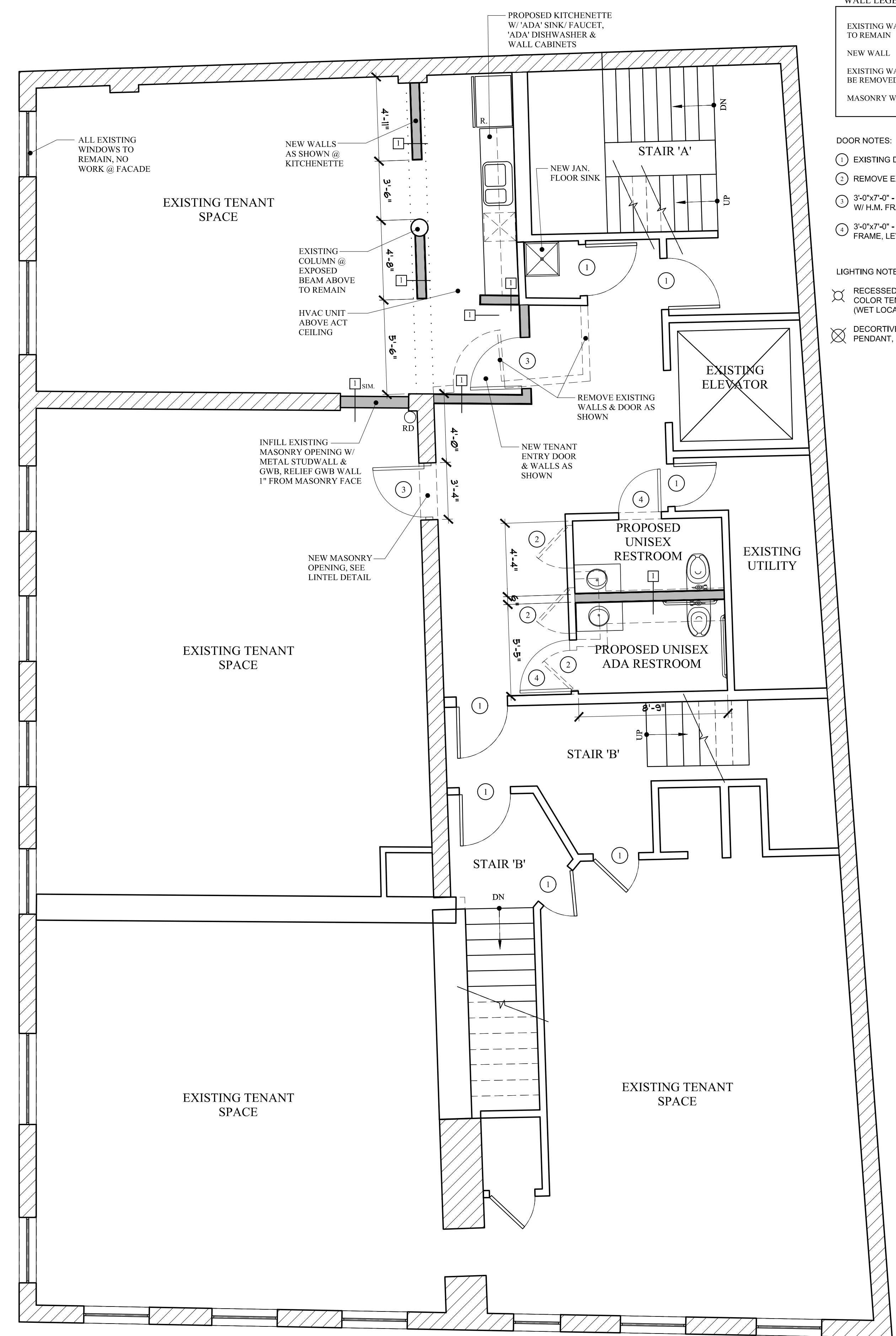
INTERIOR KITCHENETTE ELEVATION
SCALE: 1/2"=1'-0"



ADA SINK BASE SECTION
SCALE: N.T.S.



INTERIOR RESTROOM ELEVATIONS
SCALE: 1/2"=1'-0"



PROPOSED FLOOR PLAN
SCALE: 1/4"=1'-0"

- WALL LEGEND**
- EXISTING WALL TO REMAIN
 - NEW WALL
 - EXISTING WALL TO BE REMOVED
 - MASONRY WALL
- DOOR NOTES:**
- EXISTING DOOR TO REMAIN
 - REMOVE EXISTING DOOR
 - 3'-0"x7'-0" - NEW SOLID WOOD SLAB (FULL LIFE) W/ H.M. FRAME, LEVER HARDWARE & CLOSER
 - 3'-0"x7'-0" - NEW SOLID WOOD SLAB W/ H.M. FRAME, LEVER HARDWARE & CLOSER.
- LIGHTING NOTES:**
- RECESSED LED DOWNLIGHT, 3000K COLOR TEMP. (WET LOCATION FIXTURE @ RESTROOMS)
 - DECORATIVE LED ARCHITECTURE PENDANT, 3000K COLOR TEMP.

PROFESSIONAL ARCHITECT
MARK L. MUELLER
No. 2737

MARK MUELLER ARCHITECTS
A.I.A.

100 Commercial Street
Suite 205
Portland, Maine 04101
Phone/ Fax 207.774.9057
Email: rfm@muellerarchitects.com

PROJECT: **MALONE COMMERCIAL BROKERS**
5 MOULTON STREET
PORTLAND, MAINE

REVISIONS

NO.	DATE	DESCRIPTION

DATE: JULY 2017

PROJECT: MALONE RESTROOMS

DRAWN BY: MRP

CHECK BY: MAM