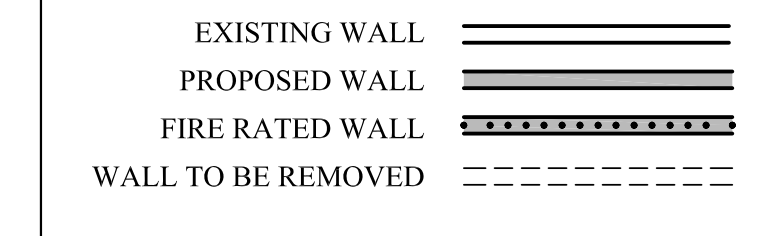


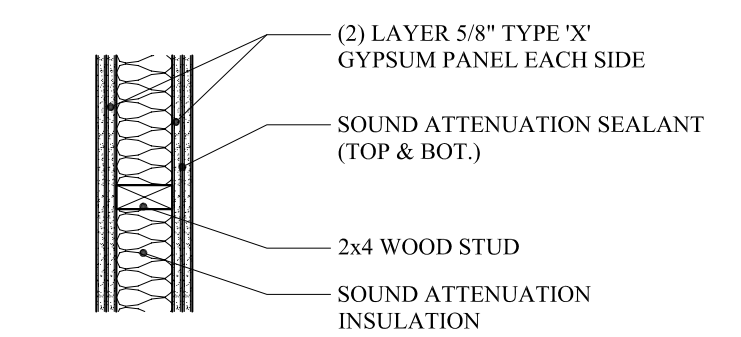
# PROJECT NOTES

- SCOPE OF WORK: SHALL INCLUDE THE REMOVAL/RELOCATION OF 1 EXISTING COMMERCIAL STREET ENTRY DOOR.
- HISTORIC PRESERVATION APPROVAL HAS BEEN OBTAINED.
- ALL NEW WORK SHALL CONFORM TO THE CITY OF PORTLAND INSPECTIONS, FIRE, ZONING & HISTORIC PRESERVATION OFFICES.
- ANY FIRE ALARM WORK SHALL BE INSTALLED ACCORDINGLY TO MEET NFPA 72, CITY OF PORTLAND & STATE FIRE MARSHAL REQUIREMENTS.
- ALL FIRE RATED WALL PENETRATIONS SHALL BE UL APPROVED.
- VERIFY EXISTING SPRINKLER HEAD COVERAGE FOR ADDED ENCLOSED AREA. ADD NEW SPRINKLER HEAD AS REQUIRED PER NFPA 72.
- HVAC DUCT WORK AS SHOWN ON PLANS W/ UL APPROVED FIRE WALL PENETRATIONS
- CONTACT THE ARCHITECT PRIOR TO WORK SHOULD DISCREPANCIES BE DISCOVERED DURING THE BUILDING PROCESS.

## WALL LEGEND



## PROPOSED WALL - INTERIOR

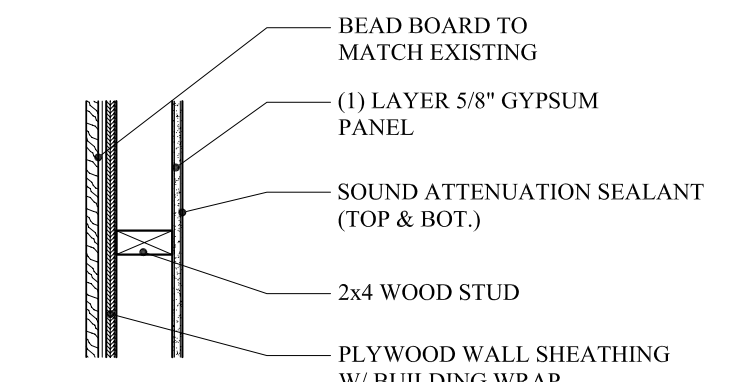


- 2x4 STUD WALL - (1HR RATED)  
(UL DESIGN: U 301) FIRE CAULK PERIMETER

ALIGN FINISHES @ EXTERIOR WALL FACE & FIRE RATED WALL

\* INSTALL ALL MATERIALS PER MANUFACTURE REQUIREMENTS

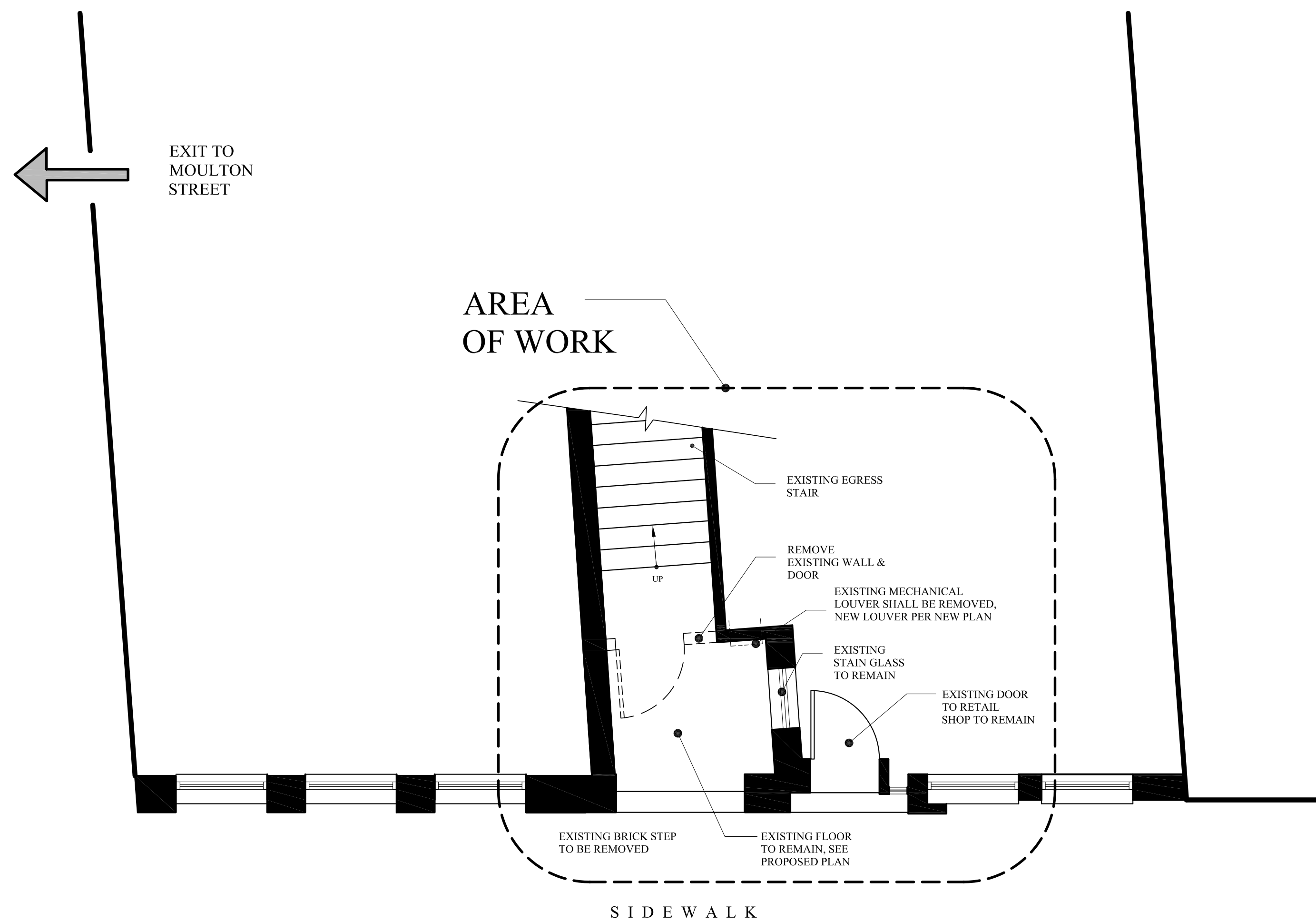
## PROPOSED WALL - EXTERIOR



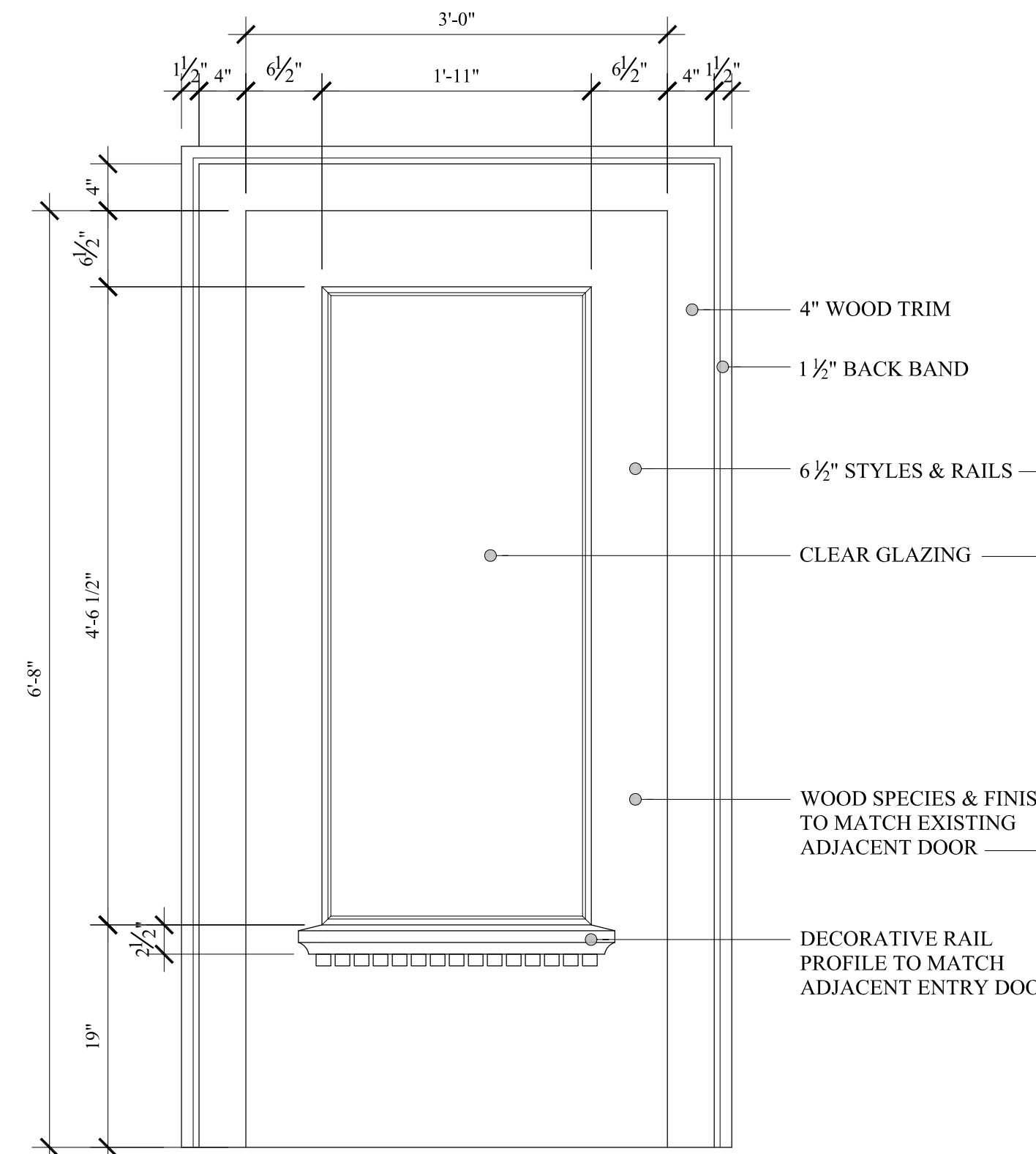
- 2x4 STUD WALL - (NON-RATED)  
CAULK PERIMETER

ALIGN FINISHES @ EXTERIOR WALL FACE & FIRE RATED WALL

\* INSTALL ALL MATERIALS PER MANUFACTURE REQUIREMENTS

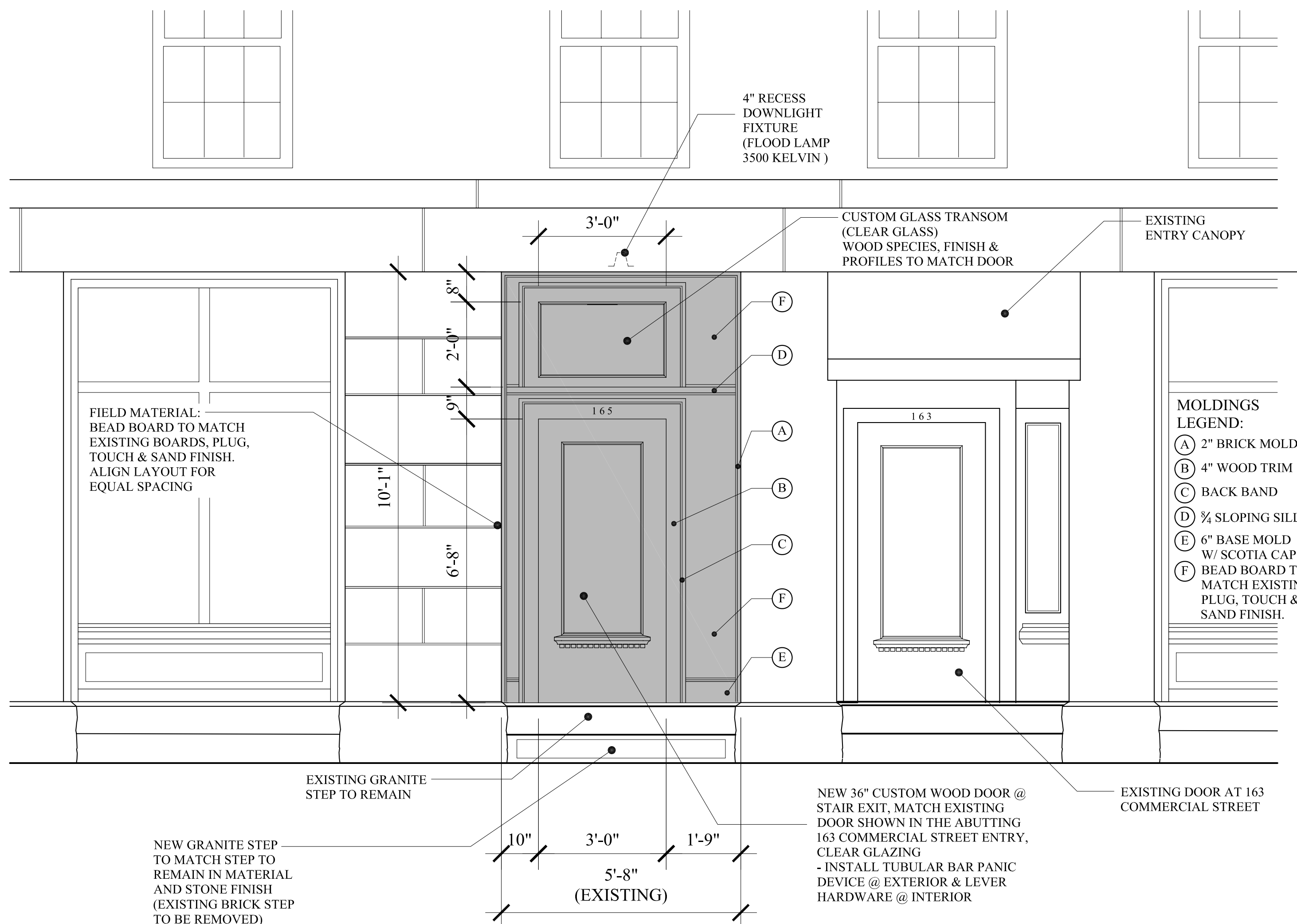
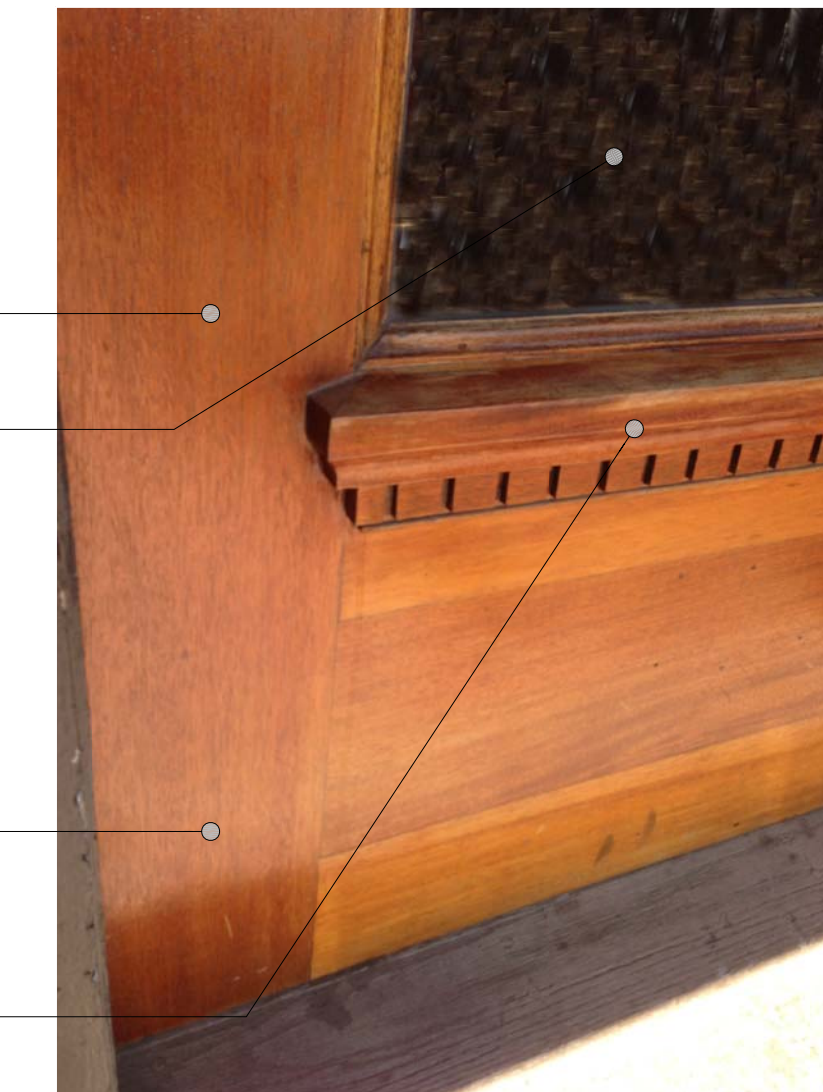


EXISTING PLAN @ COMMERCIAL STREET  
SCALE: 1/4"=1'-0"

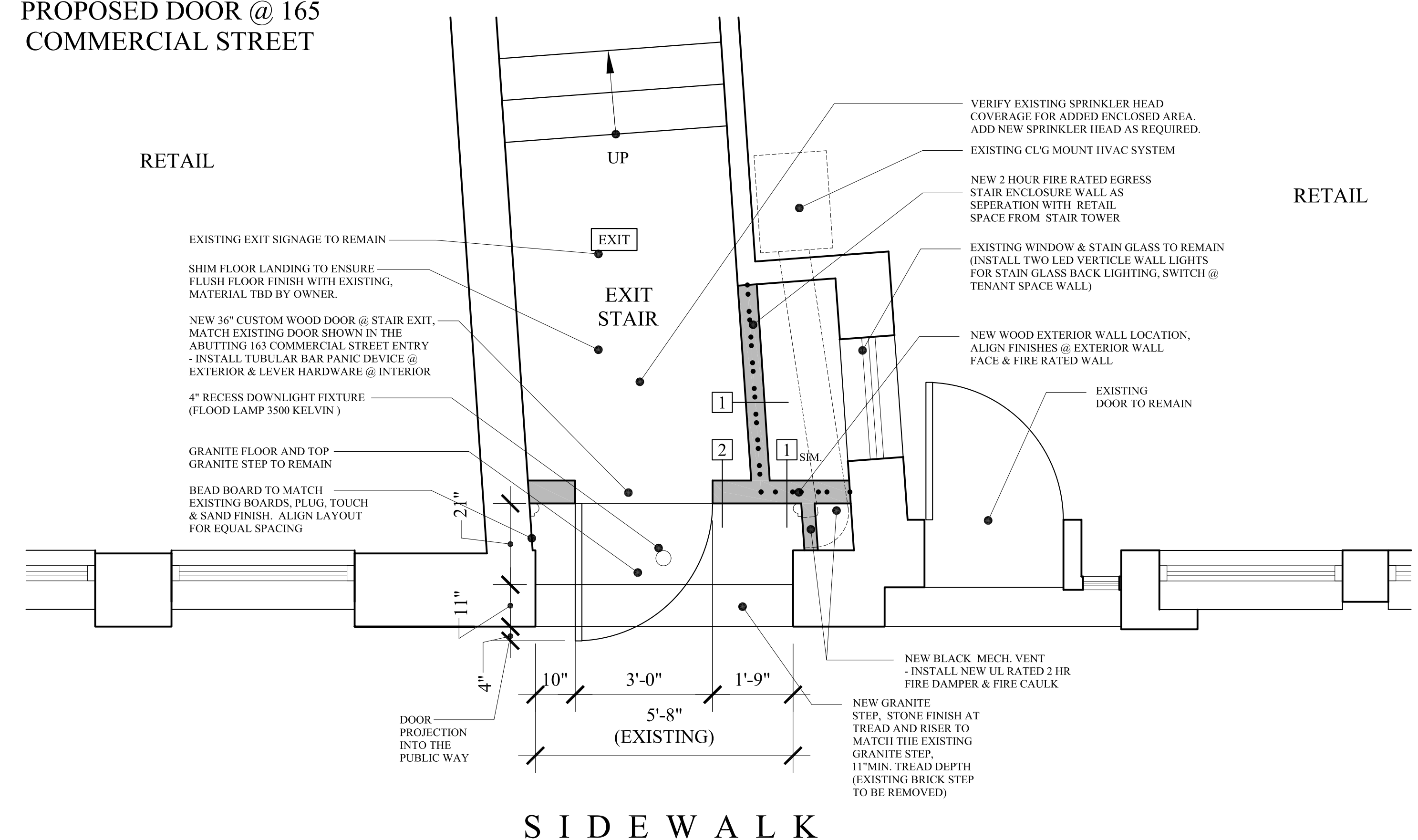


PROPOSED DOOR @ 165 COMMERCIAL STREET

## EXISTING ADJACENT DOOR @ 163 COMMERCIAL STREET



EXTERIOR ELEVATION  
SCALE: 1/2"=1'-0"



PROPOSED RENOVATION @ COMMERCIAL STREET EXIT  
SCALE: 1/2"=1'-0"



MARK MUELLER ARCHITECTS

A.I.A.  
100 Commercial Street  
Suite 205  
Portland, Maine 04101  
Phone/Fax 207.774.9057  
Email:  
rf@muellerarchitects.com

© COPYRIGHT 2013  
MARK MUELLER ARCHITECTS

MOULTON BLOCK  
5 MOULTON STREET  
PORTLAND, MAINE

ENTRY DOOR:

REVISIONS	DATE
	June 2013
PROJECT	5 Moulton St.
DRAWN BY	MMP
CHECK BY	MLM

BUILDING PERMIT SET: JUNE -, 2013

A-1.1