

# TENANT SHELL WORK

51 WHARF STREET  
PORTLAND, MAINE

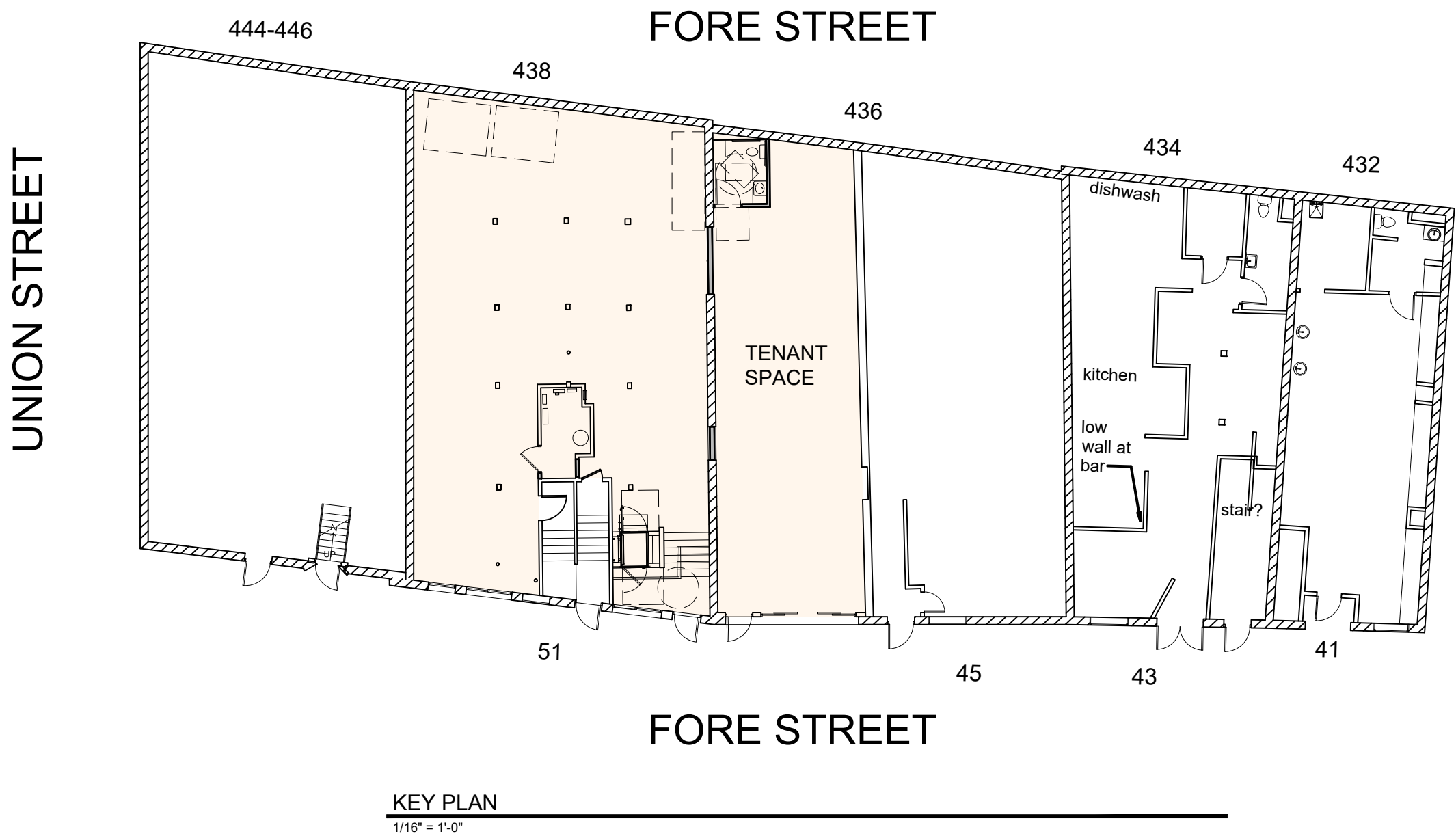
UPDATED PER HISTORIC REVIEW 06-26-18

## PERMIT DRAWINGS

MAY 01, 2018

DRAWING LIST	
SHEET NUMBER	
G0-0	TITLE SHEET
G1-0	GENERAL NOTES, ABBREVIATIONS, AND LEGENDS
G1-1	CODE REVIEW PLAN
<b>ARCHITECTURAL</b>	
AD1-0	DEMOLITION PLAN AND ELEVATION
A0-1	WALL ASSEMBLIES
A1-0	FLOOR PLAN AND PART ELEVATION
A4-0	INTERIOR ELEVATIONS
A7-1	DOOR SCHEDULE

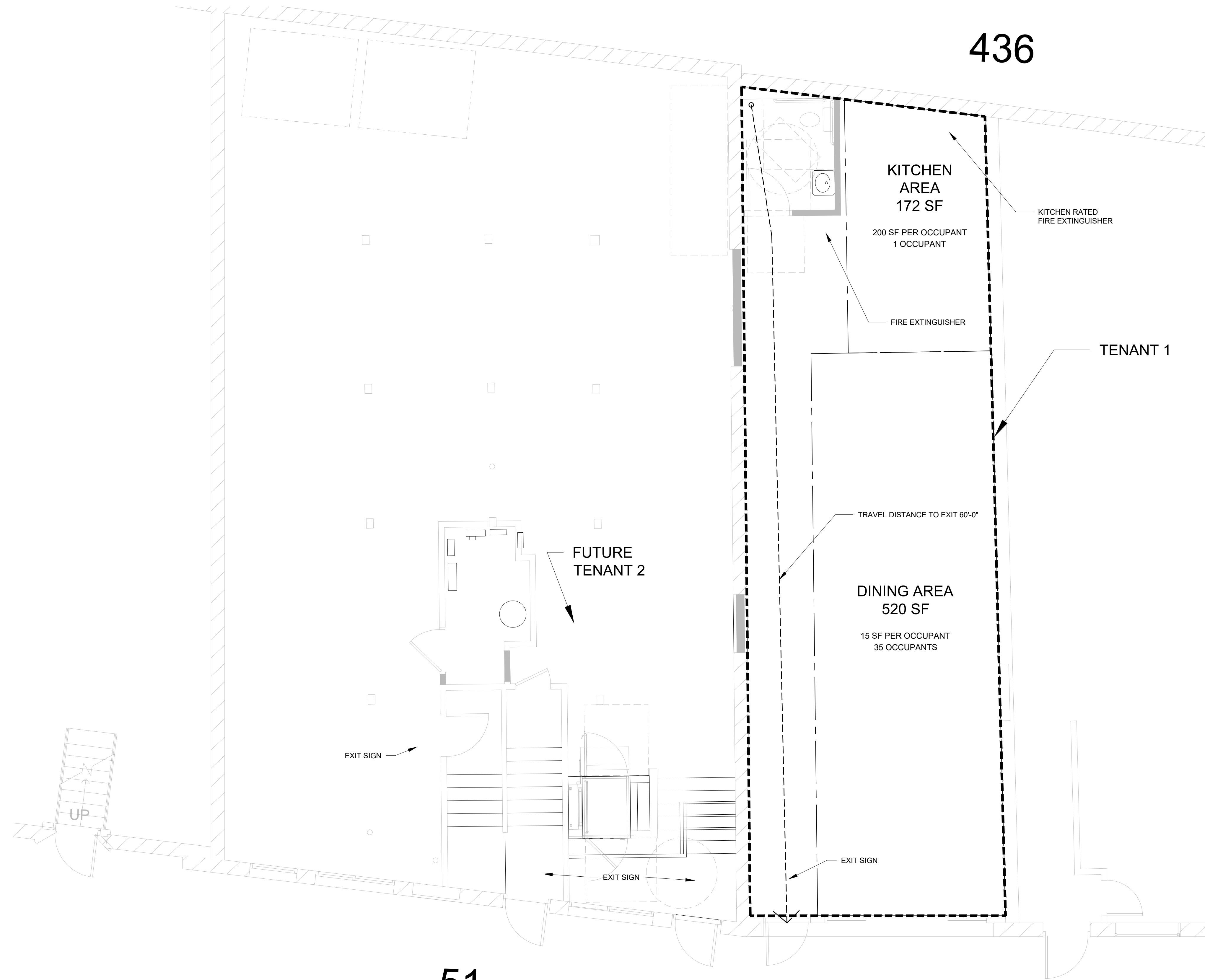
  
Reviewed for Code Compliance  
Permitting and Inspections Department  
Approved with Conditions  
08/10/2018



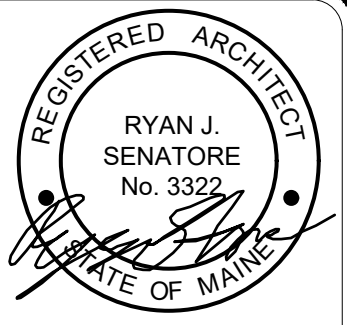
ARCHITECT

RYAN SENATORE **ARCHITECTURE**

565 CONGRESS STREET, SUITE 304, PORTLAND, MAINE 04101  
207-650-6414



Reviewed for Code Compliance  
Permitting and Inspections Department  
Approved with Conditions  
08/10/2018



© 2018 RYAN SENATORE  
ARCHITECTURE

51 WHARF STREET  
RENOVATIONS  
PORTLAND, MAINE



RYAN SENATORE  
**ARCHITECTURE**  
565 CONGRESS STREET  
PORTLAND, MAINE 04101  
207-650-8414  
senatorearchitecture.com

CONSULTANTS:

REVISIONS:

DATE: 05 / 01 / 18

PROJECT No. 1821

DRAWN BY: RJS, JPF

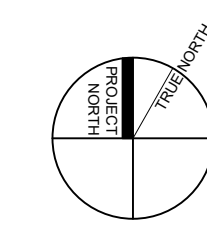
CHECKED BY: RJS

SCALE: AS NOTED

SHEET TITLE:  
CODE REVIEW  
PLAN

G1-1

1 CODE REVIEW PLAN  
1/4" = 1'-0"

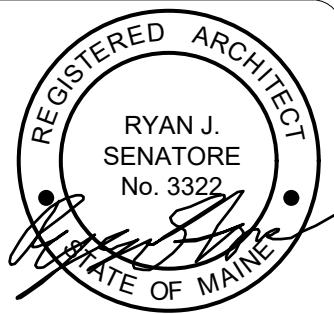


0 4' 8' 16' 32'



Reviewed for Code Compliance  
Permitting and Inspections Department  
Approved with Conditions

08/10/2018



© 2018 RYAN SENATORE  
ARCHITECTURE

51 WHARF STREET  
RENOVATIONS  
PORTLAND, MAINE



RYAN SENATORE  
ARCHITECTURE  
565 CONGRESS STREET  
PORTLAND, MAINE 04101  
207-650-6414  
senatorearchitecture.com

CONSULTANTS:

REVISIONS:

DATE: 05 / 01 / 18

PROJECT No. 1821

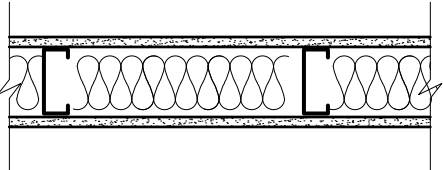
DRAWN BY: RJS, JPF

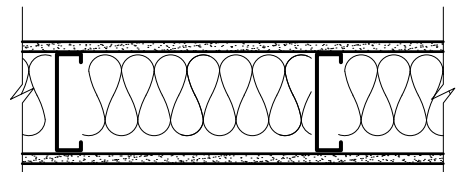
CHECKED BY: RJS

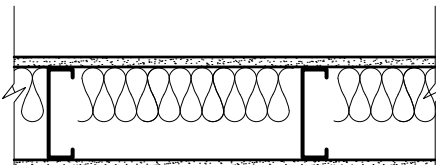
SCALE: AS NOTED

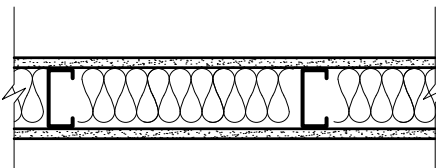
SHEET TITLE:  
WALL TYPES

A0-1

GRAPHIC DEPICTION		DESCRIPTION			
		<ul style="list-style-type: none"><li>- LAYER OF TYPE 'X' 5/8" GWB</li><li>- 3-5/8" LIGHT GAUGE METAL STUDS AT 16" O.C.</li><li>- 3-1/2" SOUND BATT INSULATION</li><li>- LAYER OF TYPE 'X' 5/8" GWB</li></ul> HEAD DEFLECTION SLIP TRACK			
TYPE					
1B	FIRE RATING	UL NUMBER	STC RATING	IIC RATING	
	1 HR	V450	50-54	N/A	

GRAPHIC DEPICTION		DESCRIPTION			
		<ul style="list-style-type: none"><li>- LAYER OF TYPE 'X' 5/8" GWB</li><li>- 6" LIGHT GAUGE METAL STUDS AT 16" O.C.</li><li>- 5-1/2" SOUND BATT INSULATION</li><li>- LAYER OF TYPE 'X' 5/8" GWB</li></ul> HEAD DEFLECTION SLIP TRACK			
TYPE	FIRE RATING	UL NUMBER	STC RATING	IIC RATING	
1A	1 HR	V450	50-54	N/A	

GRAPHIC DEPICTION		DESCRIPTION		
		<ul style="list-style-type: none"><li>- LAYER OF 5/8" GWB</li><li>- 6" LIGHT GAUGE METAL STUDS AT 16" O.C.</li><li>- 5-1/2" SOUND BATT INSULATION</li><li>- LAYER OF 5/8" GWB</li></ul> HEAD DEFLECTION SLIP TRACK		
TYPE	FIRE RATING	UL NUMBER	STC RATING	IIC RATING
NB	N/A	N/A	35-39	N/A

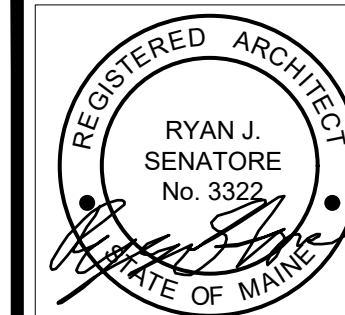
GRAPHIC DEPICTION		DESCRIPTION			
		<ul style="list-style-type: none"><li>- LAYER OF 5/8" GWB</li><li>- 3-5/8" LIGHT GAUGE METAL STUDS AT 16" O.C.</li><li>- 3-1/2" SOUND BATT INSULATION</li><li>- LAYER OF 5/8" GWB</li></ul> HEAD DEFLECTION SLIP TRACK			
TYPE	FIRE RATING	UL NUMBER	STC RATING	IIC RATING	
NA	N/A	N/A	35-39	N/A	

WALL TYPE NOTES

- 1.) REFER TO STRUCTURAL DRAWINGS FOR STUD SIZE AND SPACING
- 2.) FIRE RATED WALLS TO EXTEND UP TO DECKING ABOVE THROUGH THE FLOOR / CEILING ASSEMBLY.
- 3.) PROVIDE HEAD DEFLECTION SLIP TRACK AT ALL WALLS FRAMED TO DECK ABOVE
- 4.) INSTALL WATER RESISTANT GYPSUM WALLBOARD IN ALL RESTROOMS AND TOILET ROOM WALLS AND CEILINGS, AND AT ANY WALL WITH PLUMBING FIXTURES
- 5.) WHEN TWO ADJACENT WALL TYPES HAVE DIFFERING NUMBERS OF LAYERS OF GWB, THE FINISHED FACE OF GWB MUST FORM ONE CONTINUOUS PLANE; ADJUST STUD PLANE LOCATION AS REQUIRED TO ACHIEVE THE CONTINUOUS PLANE
- 6.) HOLD BOTTOM OF GWB UP 1/2" FROM CONCRETE, PROVIDE SEALANT AT JOINT.
- 7.) ALL WALL TYPES WITH AN INSULATION COMPONENT TO BE ACOUSTICALLY SEALED
- 8.) PROVIDE ACOUSTICAL SEALANT AROUND ALL PENETRATING ELEMENTS IN WALLS AND CEILINGS (ELECTRICAL BOXES, DUCTS, PIPES, ETC)
- 9.) PROVIDE DIAGONAL BRACING UP TO DECK ABOVE AT ALL INTERIOR PARTITIONS THAT DO NOT GO UP TO DECK ABOVE FOR STIFFNESS AS REQUIRED



Reviewed for Code Compliance  
Permitting and Inspections Department  
Approved with Conditions  
08/10/2018



© 2018 RYAN SENATORE  
ARCHITECTURE

51 WHARF STREET  
RENOVATIONS  
PORTLAND, MAINE



RYAN SENATORE  
**ARCHITECTURE**  
565 CONGRESS STREET  
PORTLAND, MAINE 04101  
207-650-8414  
senatorearchitecture.com

CONSULTANTS:

REVISIONS:

DATE: 05 / 01 / 18

PROJECT No. 1821

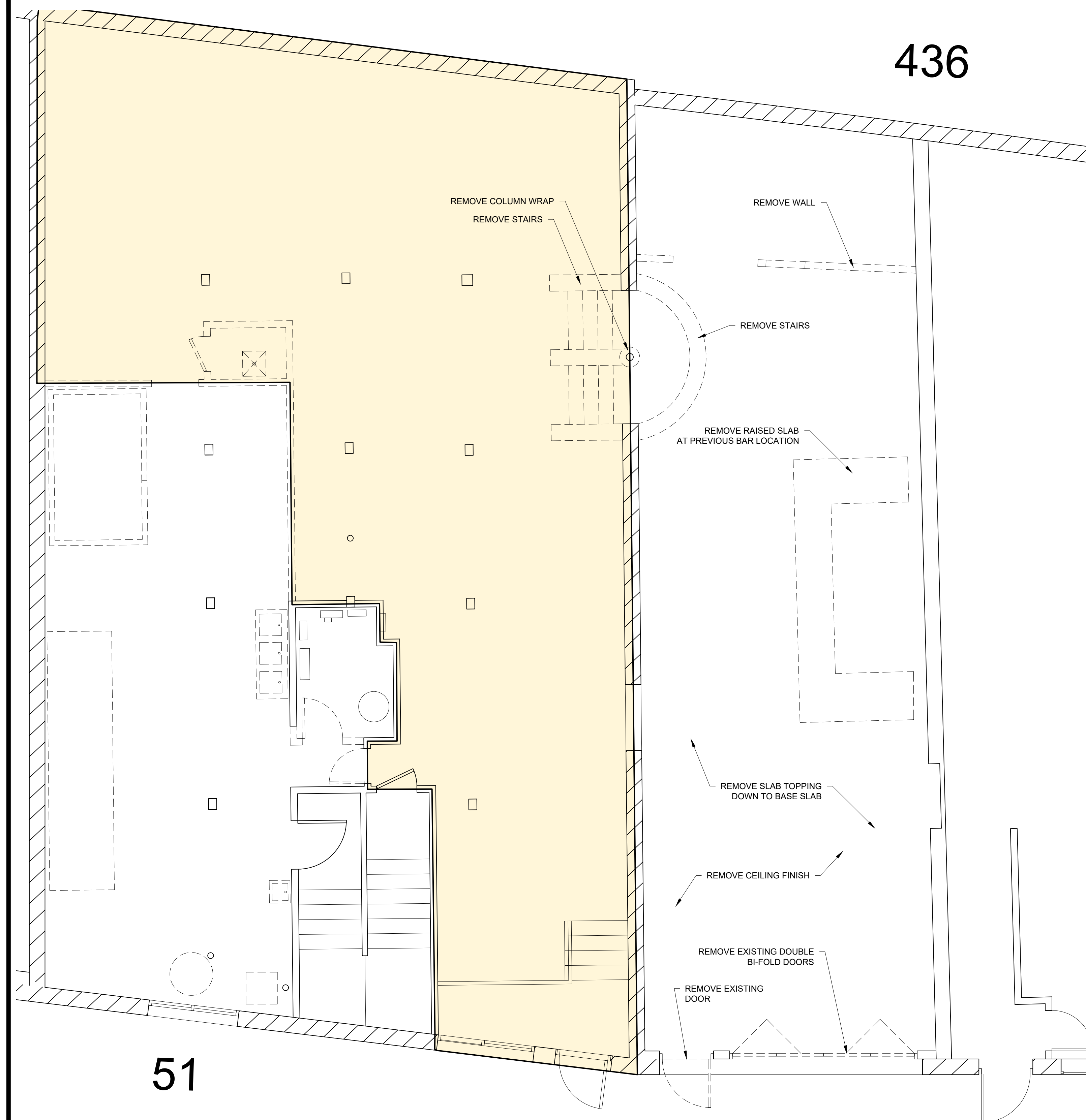
DRAWN BY: RJS, JPF

CHECKED BY: RJS

SCALE: AS NOTED

SHEET TITLE:  
DEMOLITION  
PLAN

AD1-0

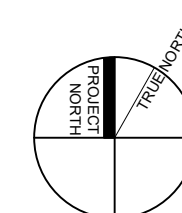


51

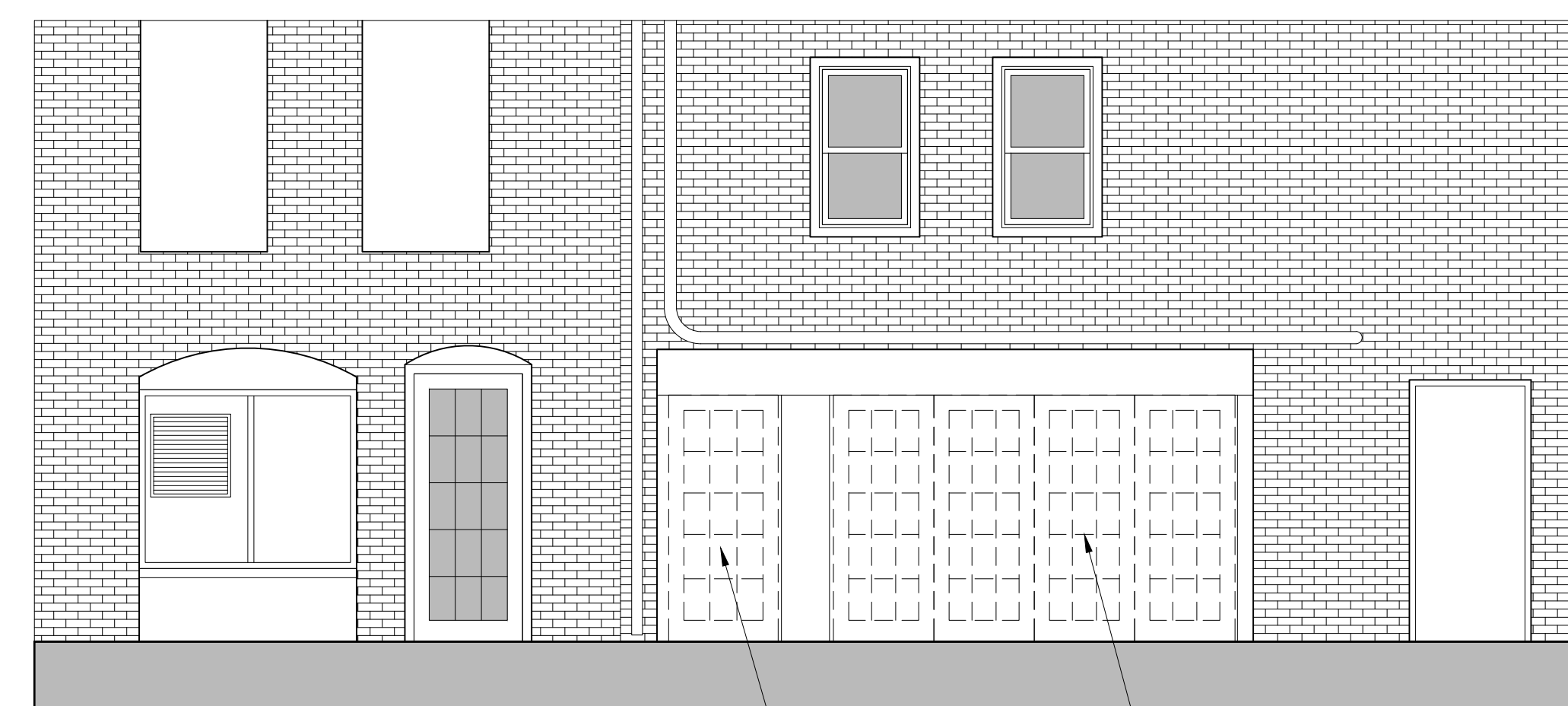
436

WHARF STREET

1 FIRST FLOOR DEMOLITION PLAN  
1/4" = 1'-0"

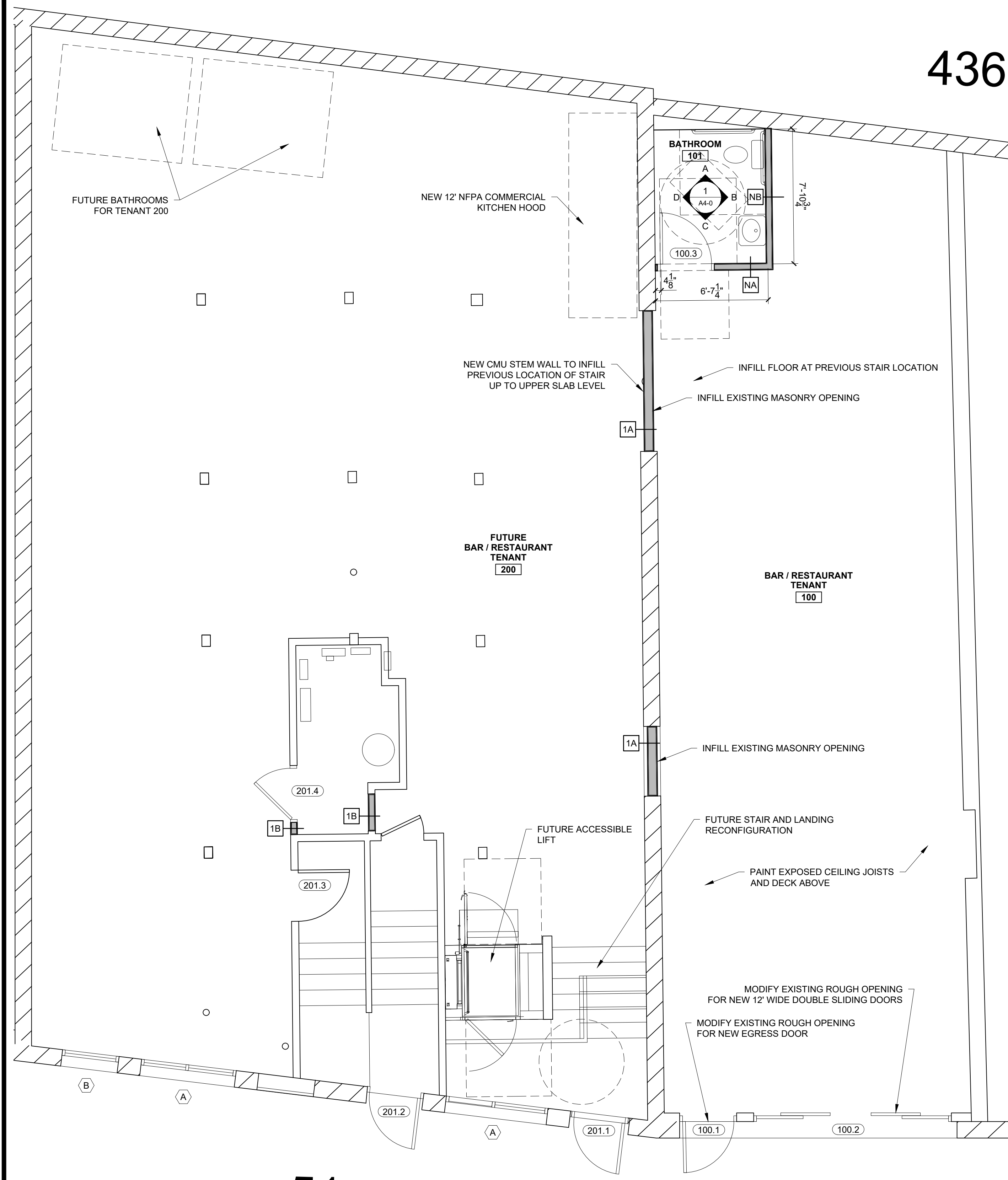


0 4' 8' 16' 32'



1 DEMOLITION ELEVATION  
1/4" = 1'-0"

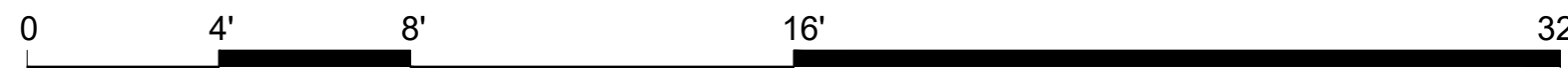
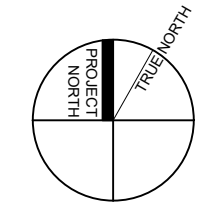




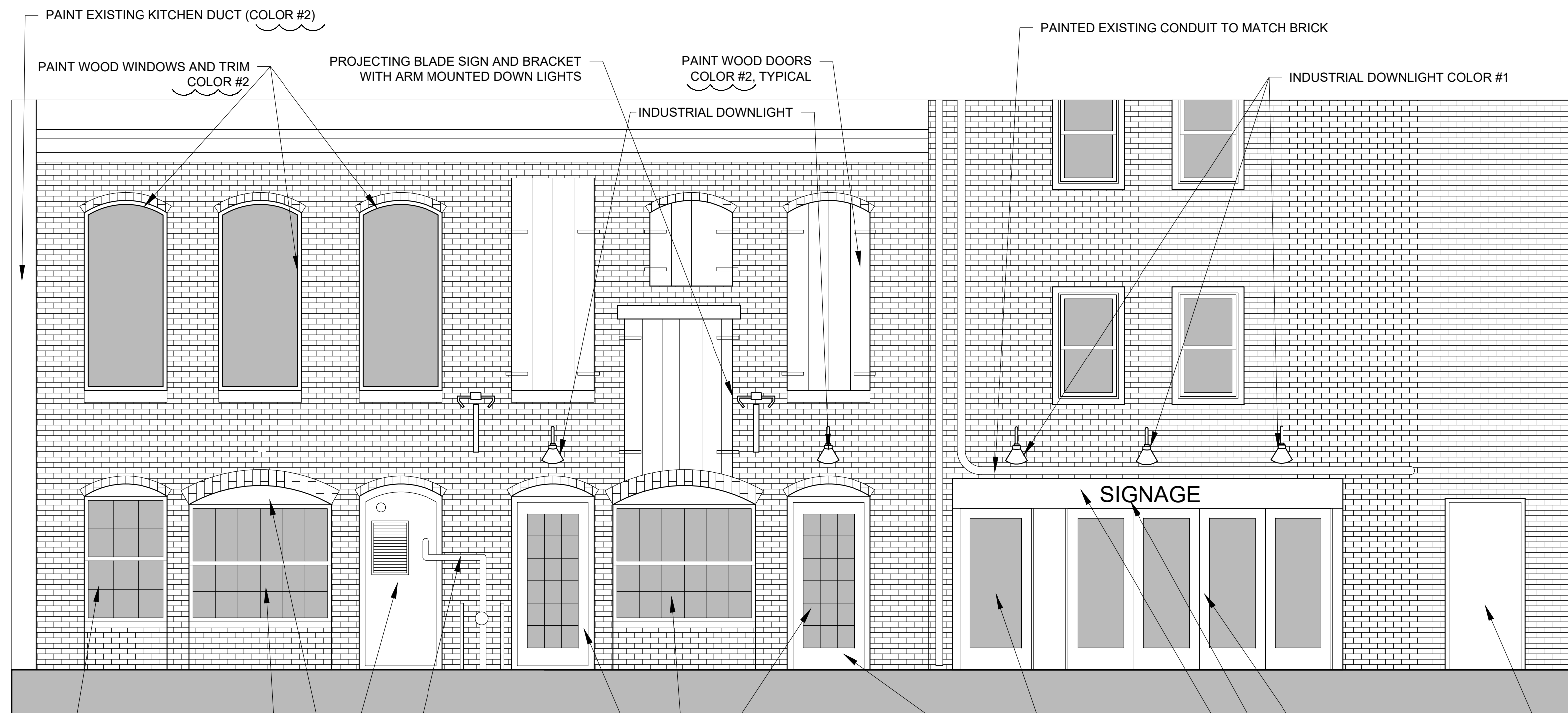
51

WHARF STREET

1 FIRST FLOOR PLAN  
1/4" = 1'-0"



436



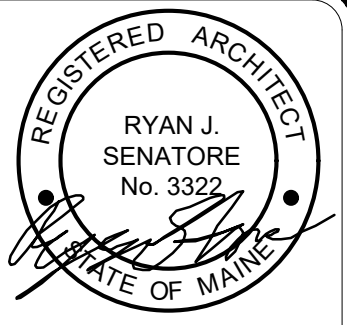
- NOTES:
- 1. DIFFERENTIATE BUILDINGS WITH COLOR
  - 2. POTENTIAL GRILL PATTERN ON 1876 BUILDING NEW WINDOWS AND DOORS
  - 3. POTENTIAL TO MAKE NEW WINDOWS ON 1876 BUILDING HAVE "ARCHED" TOP (BID ALTERNATE)
  - 4. ALL HARDWARE TO BE "UNIFIED" (DARK BRONZE HARDWARE THROUGHOUT)

COLOR #1 = BLACK (EXACT COLOR TBD)  
COLOR #2 = DARK RED (EXACT COLOR TBD)

2 PART ELEVATION (FROM WHARF STREET)  
1/4" = 1'-0"



Reviewed for Code Compliance  
Permitting and Inspections Department  
Approved with Conditions  
08/10/2018



© 2018 RYAN SENATORE  
ARCHITECTURE

51 WHARF STREET  
RENOVATIONS  
PORTLAND, MAINE



RYAN SENATORE  
ARCHITECTURE  
565 CONGRESS STREET  
PORTLAND, MAINE 04101  
207-650-6414  
senatorearchitecture.com

CONSULTANTS:

REVISIONS:  
△ - REVISED - 06-26-18  
△ - REVISED - 07-02-18

DATE: 05 / 01 / 18  
PROJECT No. 1821  
DRAWN BY: RJS, JPF  
CHECKED BY: RJS  
SCALE: AS NOTED

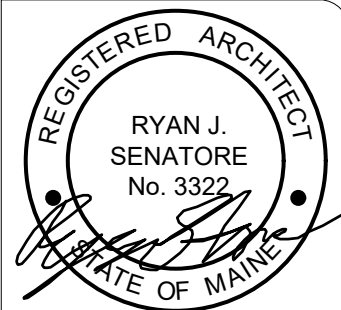
SHEET TITLE:  
FLOOR PLAN

A1-0



Reviewed for Code Compliance  
Permitting and Inspections Department  
Approved with Conditions

08/10/2018



© 2018 RYAN SENATORE  
ARCHITECTURE

51 WHARF STREET  
RENOVATIONS  
PORTLAND, MAINE



RYAN SENATORE  
**ARCHITECTURE**  
565 CONGRESS STREET  
PORTLAND, MAINE 04101  
207-650-8414  
senatorearchitecture.com

CONSULTANTS:

REVISIONS:

DATE: 05 / 01 / 18

PROJECT No. 1821

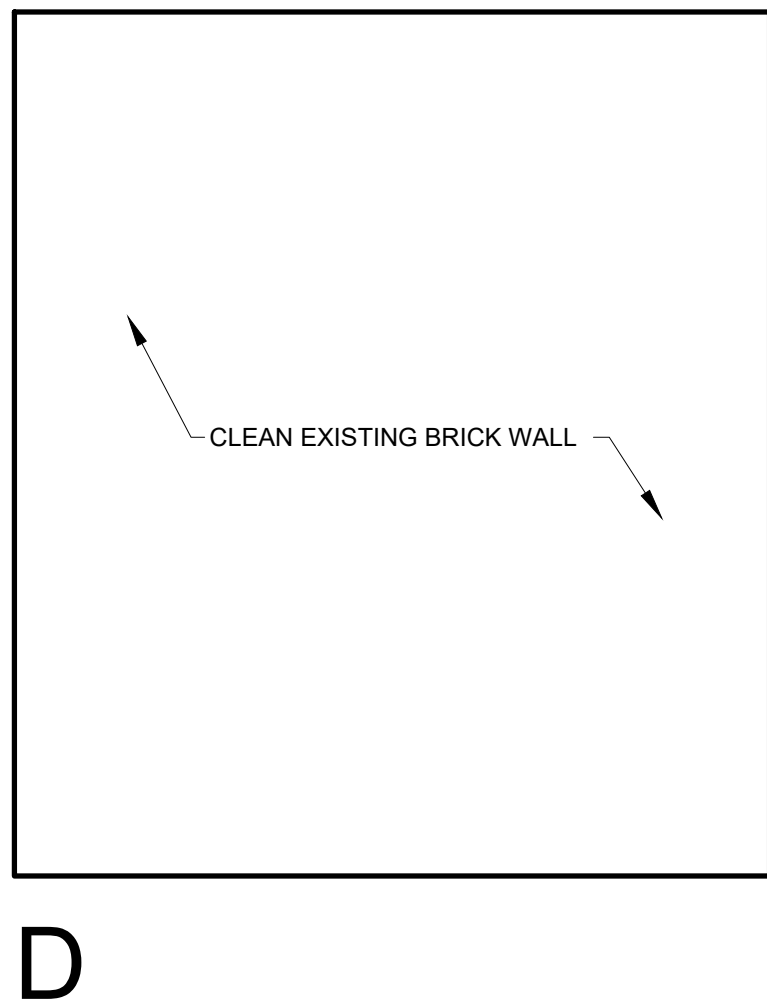
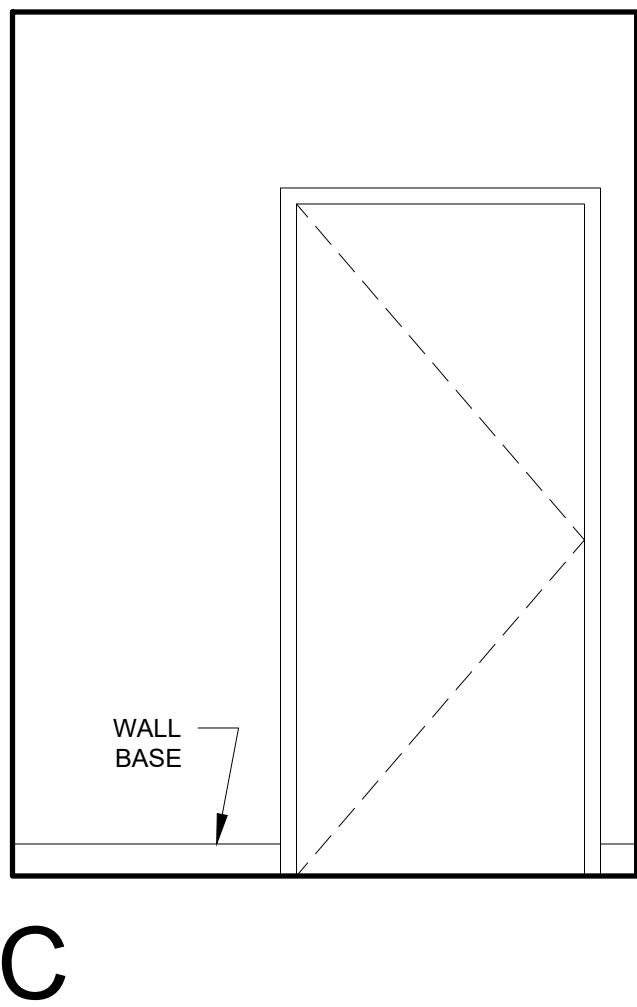
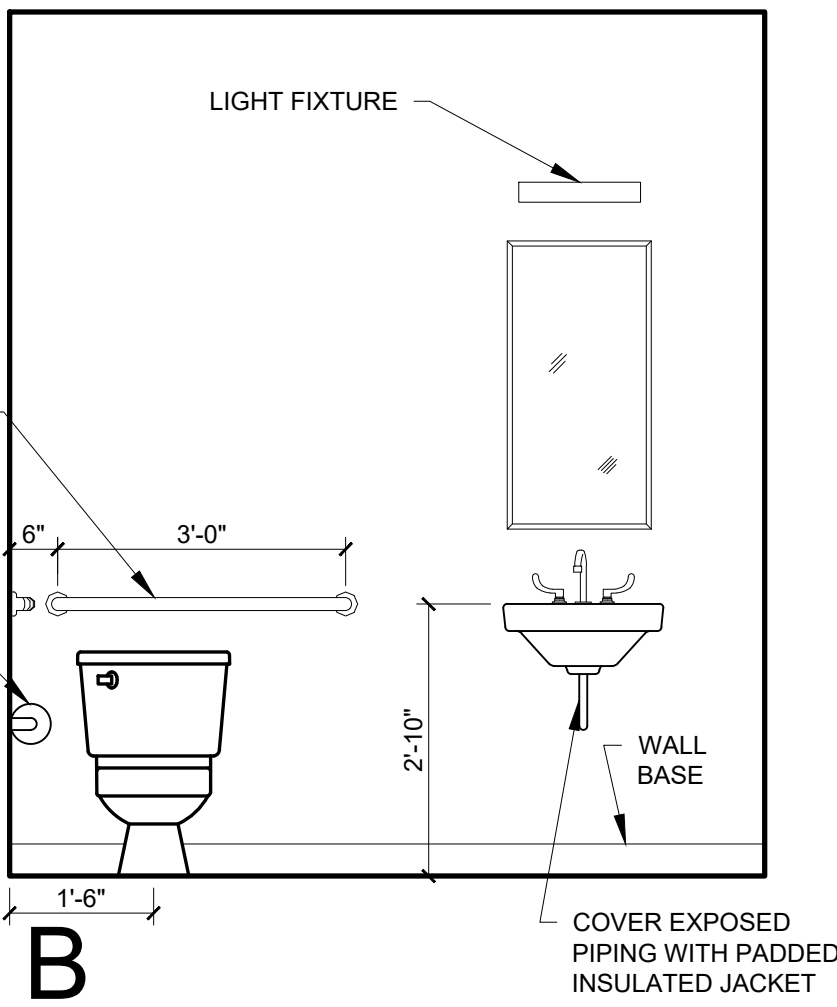
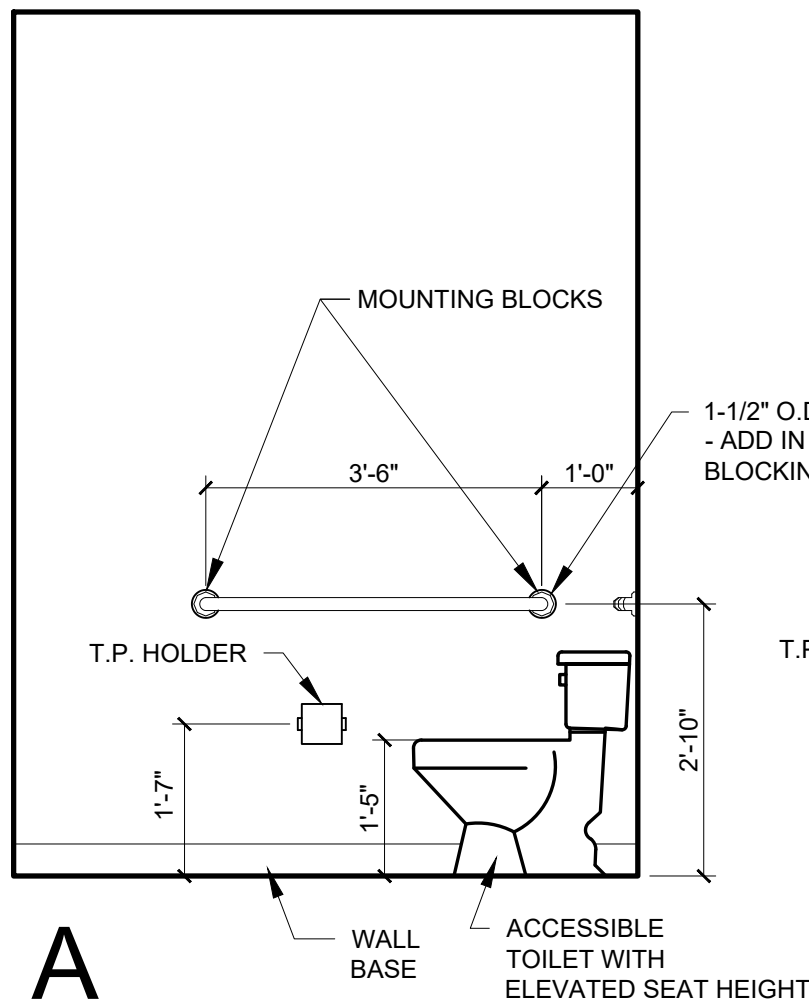
DRAWN BY: RJS, JPF

CHECKED BY: RJS

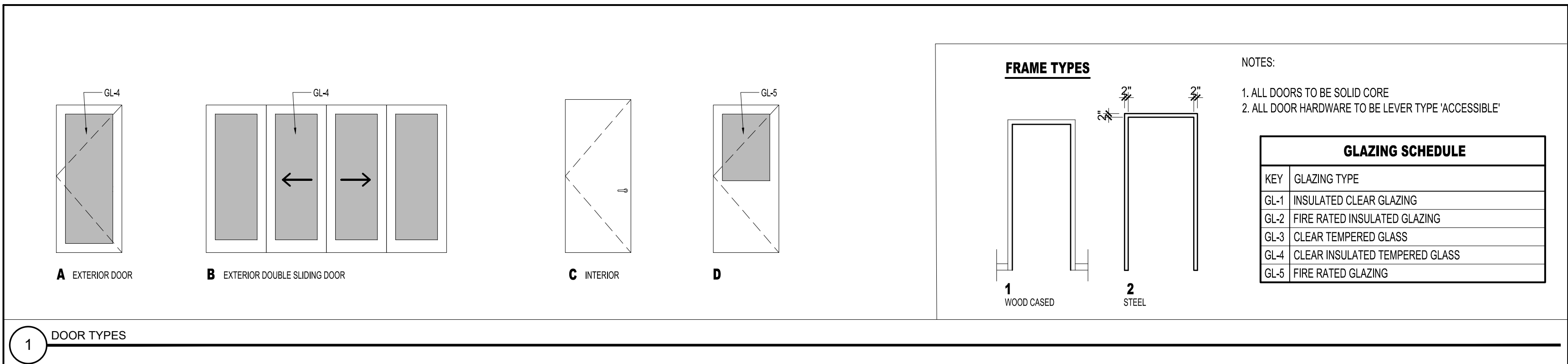
SCALE: AS NOTED

SHEET TITLE:  
INTERIOR  
ELEVATIONS

A4-0



1 BATHROOM INTERIOR ELEVATIONS  
1/2" = 1'-0"



1 DOOR TYPES

DOOR SCHEDULE																			
DOOR								FRAME				GENERAL							
DOOR NO.	TYPE	SIZE			MATERIAL	FINISH	INSULATED	TYPE	MATERIAL	DETAILS				CLOSER	PRE-RATING (MINUTES)	HARDWARE KEY			
		WIDTH	HEIGHT	THICKNESS						THRESHOLD	HEAD	JAMB	SILL			M.S. - MORTISE LOCK SET	LS - LOCK SET	PR - PRIVACY SET	PS - PASSAGE SET
100.1	A	3'-0"	7'-0"	1-3/4"	ALWD	PTD	Y	1	AL	AL	-	-	-	Y	-	PANIC HARDWARE, G.C. TO CONFRIM SIZE TO EXISTING ROUGH OPENING			
100.2	B	12'-0"	6'-8"	1-3/4"	ALWD	PTD	Y	1	AL	AL	-	-	-	-	-	DOUBLE SLIDING DOOR, G.C. TO CONFRIM SIZE TO EXISTING ROUGH OPENING			
100.3	C	3'-0"	7'-0"	1-3/8"	WD	PTD	N	2	STL	-	-	-	-	Y	-	-			
201.1	A	3'-0"	7'-0"	1-3/4"	ALWD	PTD	Y	1	AL	AL	-	-	-	Y	-	PANIC HARDWARE, G.C. TO CONFRIM SIZE TO EXISTING ROUGH OPENING			
201.2	A	3'-0"	7'-0"	1-3/4"	ALWD	PTD	Y	1	AL	AL	-	-	-	Y	-	PANIC HARDWARE, G.C. TO CONFRIM SIZE TO EXISTING ROUGH OPENING			
201.3	D	3'-0"	7'-0"	1-3/4"	STL	PTD	Y	2	STL	AL	-	-	-	Y	90	HALF GLASS FIRE DOOR WITH MAGNETIC HOLD OPEN TIED TO FIRE ALARM SYSTEM			
201.4	C	3'-0"	7'-0"	1-3/4"	STL	PTD	Y	2	STL	AL	-	-	-	Y	60	-			





3 EXISTING VIEW OF 51 WHARF LOOKING EAST



2 EXISTING VIEW OF 51 WHARF LOOKING EAST

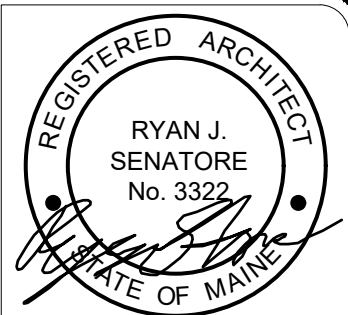


1 VIEW OF 51 WHARF EXISTING MULTI-LEAF DOORS



Reviewed for Code Compliance  
Permitting and Inspections Department  
Approved with Conditions

08/10/2018



© 2018 RYAN SENATORE  
ARCHITECTURE

51 WHARF STREET  
RENOVATIONS  
PORTLAND, MAINE



RYAN SENATORE  
ARCHITECTURE  
565 CONGRESS STREET  
PORTLAND, MAINE 04101  
207-650-8414  
senatorearchitecture.com

CONSULTANTS:

REVISIONS:

DATE: 05 / 01 / 18

PROJECT No. 1821

DRAWN BY: RJS, JPF

CHECKED BY: RJS

SCALE: AS NOTED

SHEET TITLE:  
PHOTOS