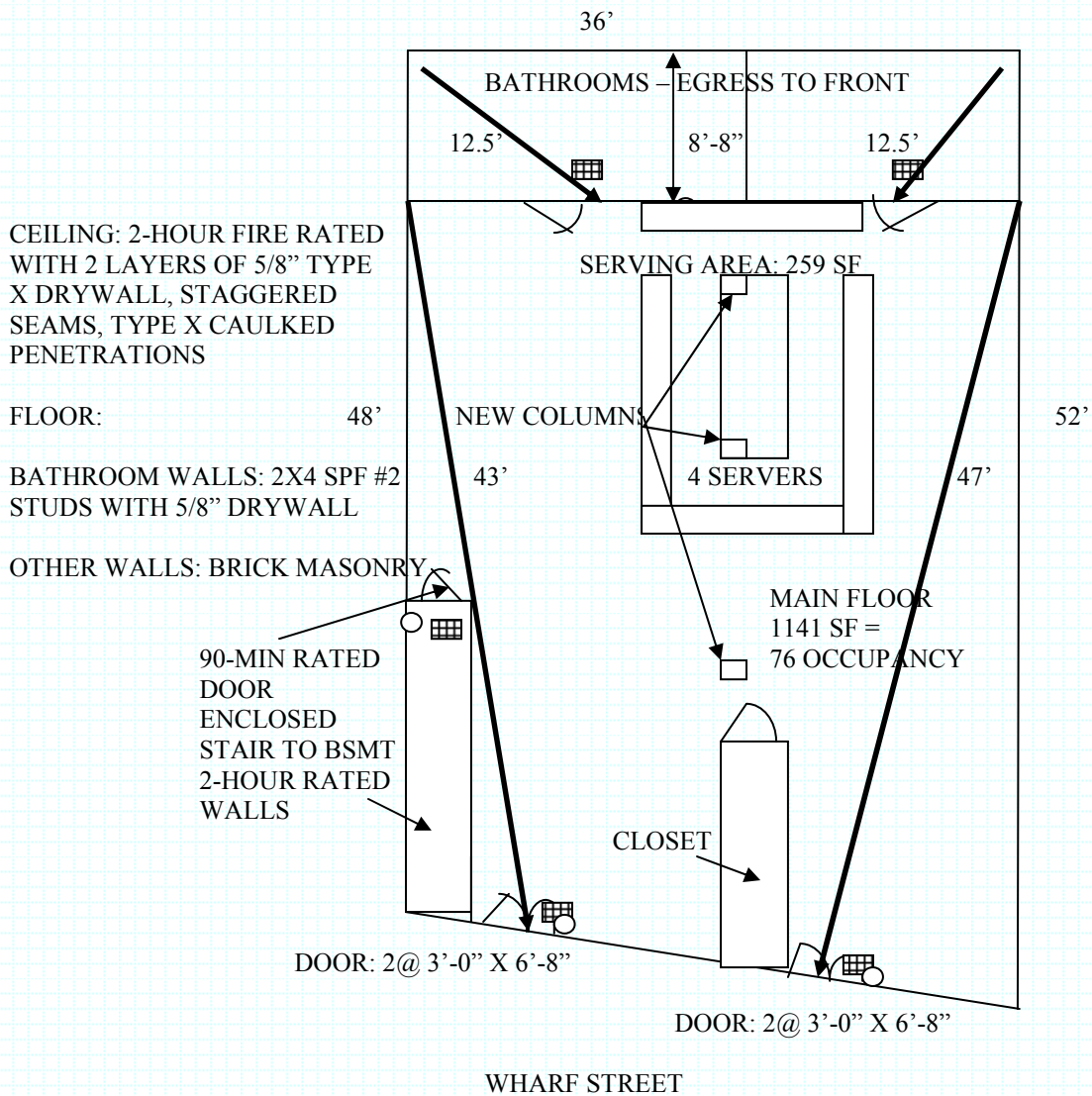


ASSEMBLY GROUP A-2 (RESTAURANTS, TAVERNS AND BARS) (IBC), EXISTING ASSEMBLY (NFPA 101)  
 BUILDING TYPE VA, SPRINKLERED (IBC), V(111) SPRINKLERED (NFPA 101)  
 OCCUPANCY PER TABLE 1004.1.1 (IBC): ASSEMBLY WITH TABLES AND CHAIRS, NO FIXED SEATS  
 15 SF NET/PERSON, = 80 PERSONS (88 PERSONS IF OCCUPANCY OF 4 ASSIGNED TO EACH BATHROOM)  
 ■ ILLUMINATED EXIT SIGN (5 REQUIRED). EMERGENCY LIGHTING NOT SHOWN (5 REQUIRED)  
 ○ ABC FIRE EXTINGUISHER



EXTERIOR DOORS ARE EXISTING

NOTE: THE TOTAL BUILDING AREA IS 9000 SF; THE UPPER FLOORS EXITS DISCHARGE TO FORE STREET WITHOUT ENTERING THE BAR/LOUNGE SPACE. THE BASEMENT IS A STORAGE SPACE SERVING THE BAR/LOUNGE WHICH DISCHARGES TO THE BAR/LOUNGE SPACE AND IS USED BY EMPLOYEES ONLY.

SKETCH – NOT TO SCALE

HWE P/N 14-007  
 03/27/2014  
 Helen C. Watts, P.E.

\_\_\_ LIFE SAFETY PLAN: 37-39 WHARF ST \_\_\_  
 \_\_\_ PORTLAND, ME \_\_\_  
 \_\_\_ TANNER HERGET, BONFIRE LLC \_\_\_  
 Helen Watts Engineering PLLC  
 455 Litchfield Road, Bowdoin, ME 04287