

SKETCH - NOT TO SCALE  
 PLAN, 1ST FLOOR, 37 SO WHARF ST PORTLAND, ME  
 CODE: MUREC

REMOVE 3-WYTHE  
 BRICK MASONRY  
 WALL & REPLACE W/  
 3 COLUMNS @ 8'

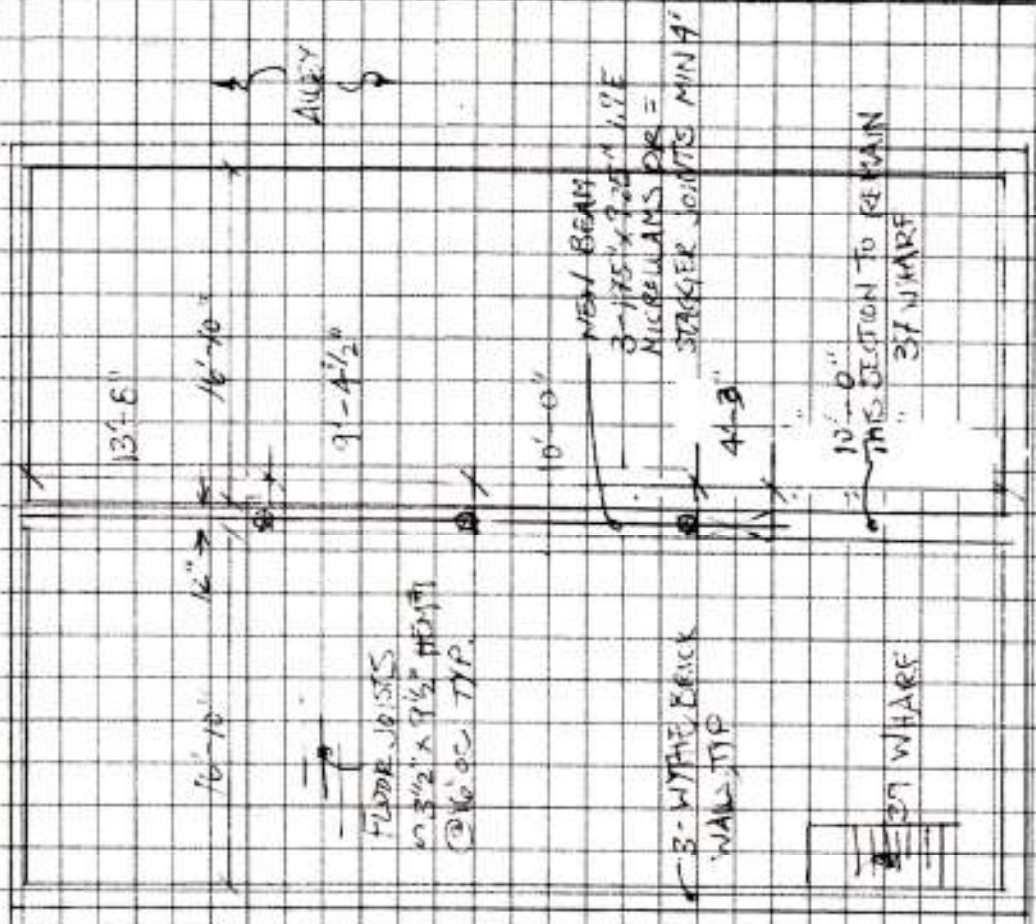
8' COLUMNS TO BE  
 ASD 4x8 OR 4x10  
 OR TWO 4x8 OR 4x10  
 OR TWO 4x10 OR 4x12

ASD 12" x 12" TO HAVE 12" x  
 12" x 12" TOP & BOT.  
 PLATES 4 3/16" TACK  
 WELD FRONT PLATE  
 TO ANCHOR WALL BEAM  
 NEW BEAM TO HAVE  
 4" MIN BEARING ON  
 MASONRY @ ENDS

STAIR TO  
 BEAM

LOAD ON BEAMS:  
 13 KIP - NOW LOAD  
 15 KIP LEAD LOAD  
 20 KIP LIVE LOAD @ 4 FLOORS  
 15 KIP DEAD LOAD

WALL BELOW REMOVED WALL  
 ASHLAR, GROUTED, GOOD CONNECTION



SKETCH 2/19/2014  
 LOCATION: 39 Wharf St, Portland  
 Tanner Herget SH 1 of 2

Helen C. Watts, PE HWE P/N 14-007  
 Helen Watts Engineering PLLC DATE: 2/19/14  
 455 Litchfield Road, Bowdoin, Me 04287  
 hcwatts@gwi.net 207-522-9366