



Provided below are sketches of the proposed signage for Lio Restaurant, located at 3 Spring St. Two signs are proposed:

Permitting and Inspections Department
Approved with Conditions

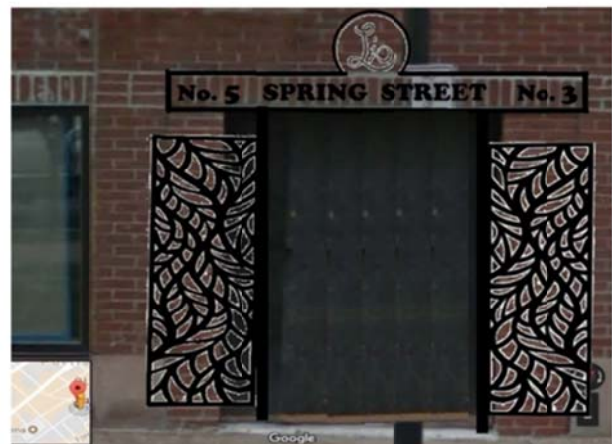
08/29/2018

1. A illuminated (back lit from inside) sign bolted to the side of the building, approximately 1 ft from the corner as shown below. Sign will be bolted to the building from the side.



2. A open frame sign above the entry vestibule, similar in style to the security gate that will be constructed at the same time. The frame/lettering will be black metal. An approximate sketch is below.

Sign is primarily street name and number, rectangular portion is 8 x 88 in, with Lio circle 15 in above that. Sign will be mounted to brick face and security gate. Security gate is metal, doors are 22 x 72, mounted on a 2in square tube frame to open within brick inset and will lay flat.





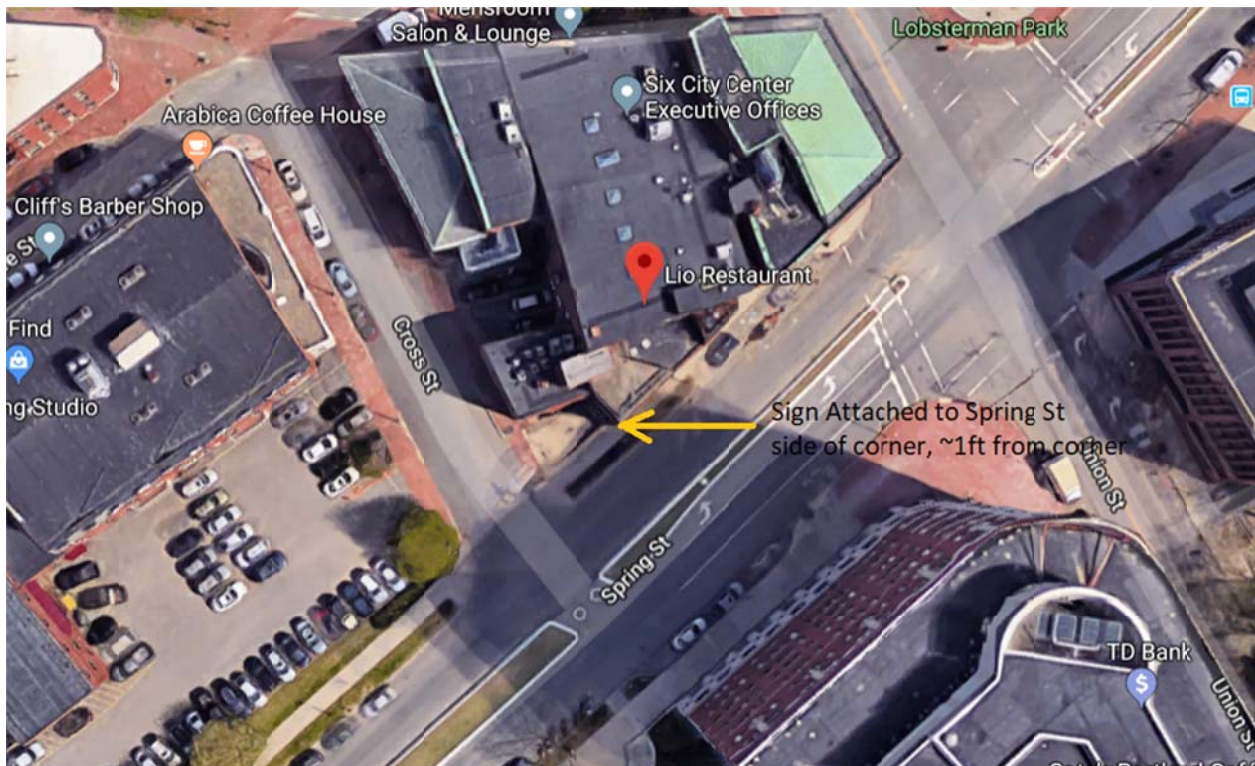
Below is an image of a typical mount that will be used as well as the illumination effect.

Permitting and Inspections Department
Approved with Conditions

08/29/2018



The following google map satellite and street views show the specific location of the sign with neighboring buildings, streets, sidewalks and





Permitting and Inspections Department
Approved with Conditions

08/29/2018



Sign location, sign is 3ft rd and
4in thick, lit from within the light



Location of street no. sign