

ELEVATION 1

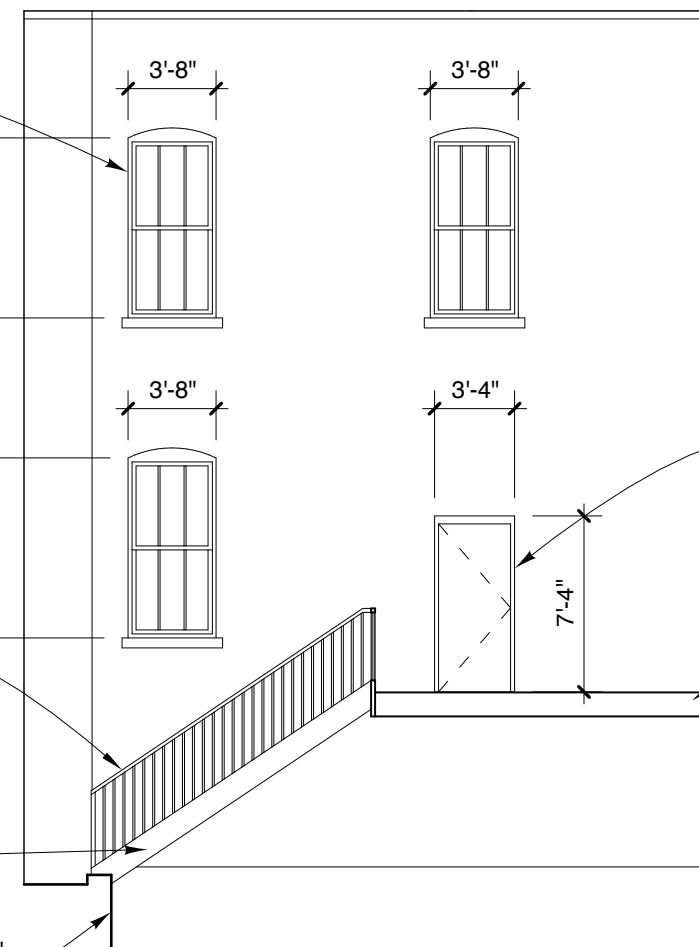
THERMALLY IMPROVED ALUMINUM DOUBLE HUNG WINDOW WITH ALUMINUM TRIM PAN. COLOR TO MATCH EXISTING PAINTED WOOD WINDOW FRAMES. TYPICAL THIS ELEVATION. WINDOW BY TRACO, EFCO, OR EQUAL

THERMALLY IMPROVED ALUMINUM FIXED SASH WINDOW WITH ALUMINUM TRIM PAN. COLOR TO MATCH EXISTING PAINTED WOOD WINDOW FRAMES. TYPICAL THIS ELEVATION. WINDOW BY TRACO, EFCO, OR EQUAL

GUARD: WELDED STEEL PIPE WITH 3/4" DIAM STEEL ROD BALUSTERS 4" O.C. ONE SIDE, HANDRAIL: 1-1/2" O.D. STEEL PIPE HANDRAIL BOTH SIDES, GUARD AND HANDRAIL POWDER COAT OR PAINTED FINISH

STAIR SYSTEM: GALVANIZED STEEL FRAMING GALVANIZED STEEL GRATE TREADS PAINT STRINGERS BLACK, MAX 7" RSIER, 11" TREAD. STAIR WIDTH 4'-0".

REBUILD CONCRETE RETAINING WALL

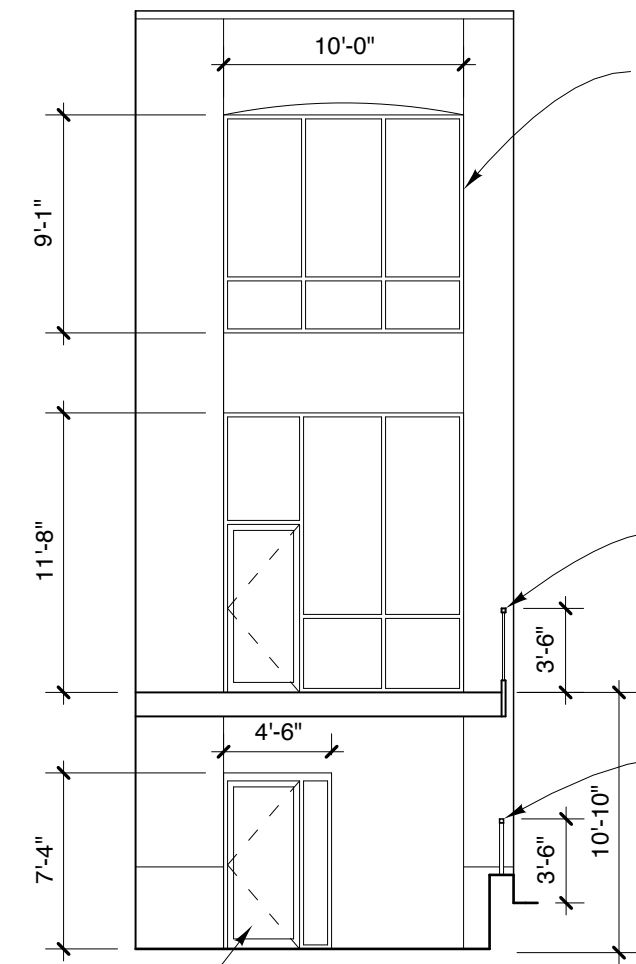


ELEVATION 2

HOLLOW METAL DOOR IN HOLLOW METAL FRAME

DECK: STEEL BEAMS AND COLUMNS P.T. WOOD JOISTS P.T. PLYWOOD DECK EPDM MEMBRANE ROOFING COMPOSITE DECKING ON P.T. WOOD SLEEPERS CEILING: VENTILATED ALUMINUM SOFFIT PITCH DECK AWAY FROM STOREFRONT SIDE ALUMINUM GUTTER AND LEADER SYSTEM TO CARRY STORM WATER TO PATIO LEVEL

BRICK PAVED PATIO



ELEVATION 3

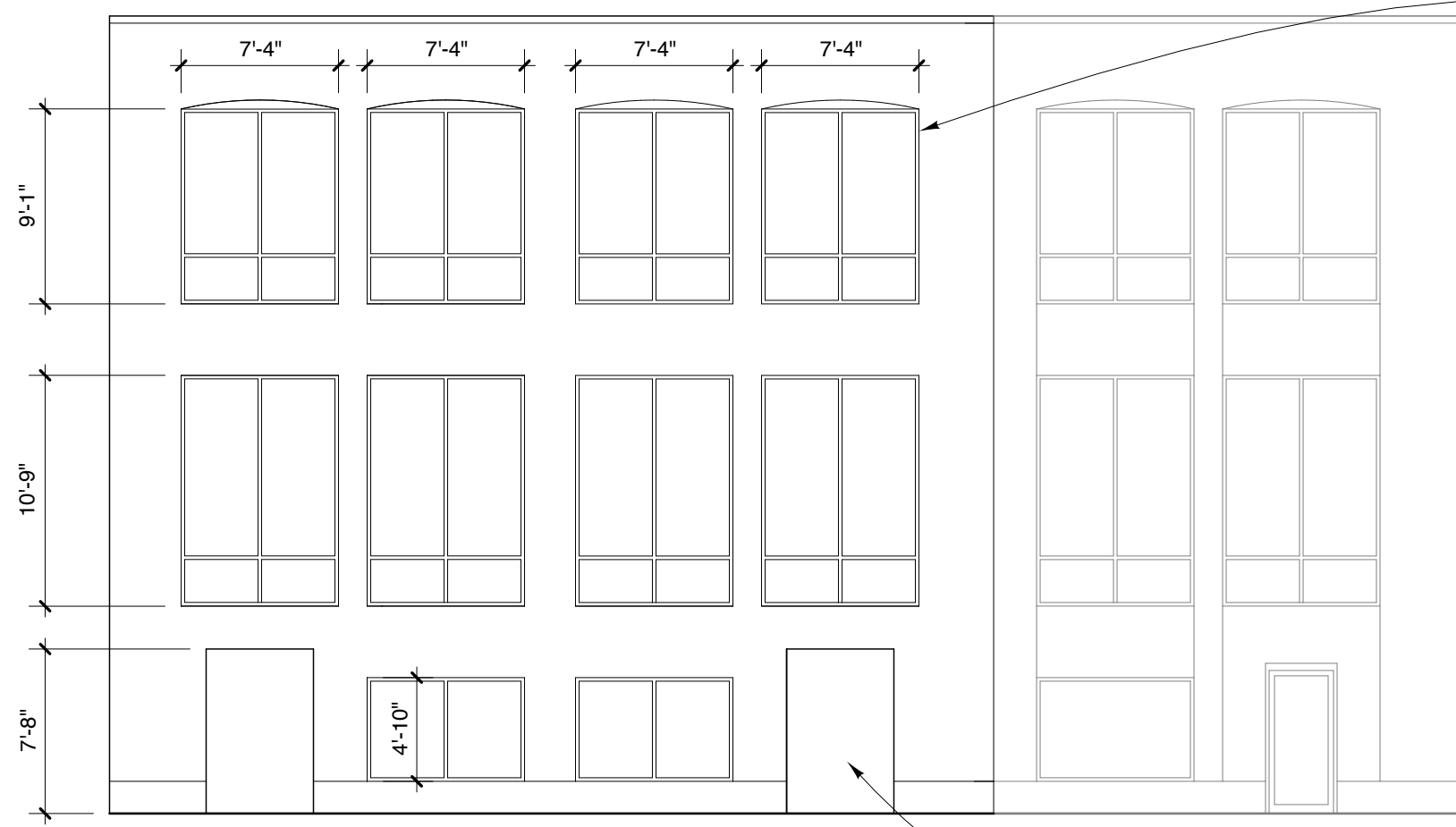
THERMALLY IMPROVED ALUMINUM STOREFRONT FRAMING WITH 1" GLASS. COLOR DARK BRONZE. TYPICAL THIS ELEVATION. STOREFRONT SYSTEM EQUAL TO 451T BY KAWNEER OR EQUAL.

DECK GUARD: WELDED STEEL PIPE WITH 3/4" DIAM STEEL ROD BALUSTERS 4" O.C.

GUARD ON RETAINING WALL: 1 1/2" STEEL PIPE, WITH POWDER COAT OR PAINTED FINISH

NARROW STILE THERMAL ALUMINUM ENTRANCE DOOR WITH INSULATED GLASS. EQUAL TO KAWNEER 260. TYPICAL THIS ELEVATION.

← 6 CITY CENTER | 4 CITY CENTER →



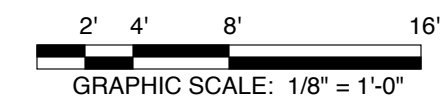
ELEVATION 4

THERMALLY IMPROVED ALUMINUM STOREFRONT FRAMING WITH 1" GLASS. COLOR DARK BRONZE. TYPICAL THIS ELEVATION. STOREFRONT SYSTEM EQUAL TO 451T BY KAWNEER OR EQUAL.

RECESSED ENTRY, TYPICAL SEE FLOOR PLAN FOR LAYOUT. CERAMIC TILE FLOOR, BRICK WALL SURFACES INSIDE ENTRY

NOTES:

1. DIMENSIONS SHOWN ARE APPROXIMATE. VERIFY ALL DIMENSIONS IN THE FIELD.
2. LIGHTING OF DECK TO BE BY WALL MOUNTED LED FIXTURES WITH CUTOFF AND MOTION SENSOR.
3. LIGHTING OF PATIO TO BE BY RECESSED LED FIXTURES UNDER THE DECK WITH MOTION SENSOR.
4. LIGHTING OF RECESSED ENTRIES TO BE BY RECESSED LED FIXTURES WITH TIMER
5. TOOTH ALL WINDOW OPENINGS. MASONRY TO MATCH EXISTING BRICK AND MORTAR IN ALL PARTICULARS.



MICHAEL CHAREK ARCHITECTS
PORTLAND, MAINE

BUILDING RENOVATIONS
6 CITY CENTER
PORTLAND, ME 04101

ELEVATIONS

BY	CKD	SCALE	DATE
		1/8" = 1'-0"	3/30/16
JOB NO.	DWG.		