

© 2017 RYAN SENATORE ARCHITECTURE

LIO RESTAURANT AND RETAIL  
6 CITY CENTER  
PORTLAND, MAINE



RYAN SENATORE  
ARCHITECTURE  
565 CONGRESS STREET  
PORTLAND, MAINE 04101  
207-650-6414  
senatorearchitecture.com

CONSULTANTS:

REVISIONS:

DATE: 2 MARCH 2017

PROJECT No. 1646

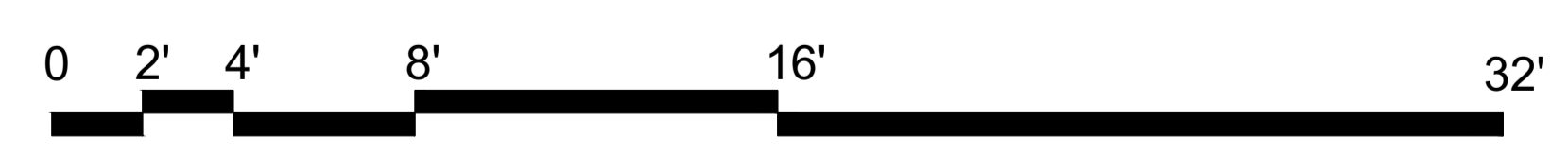
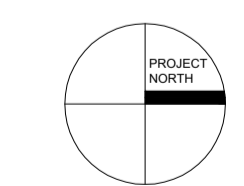
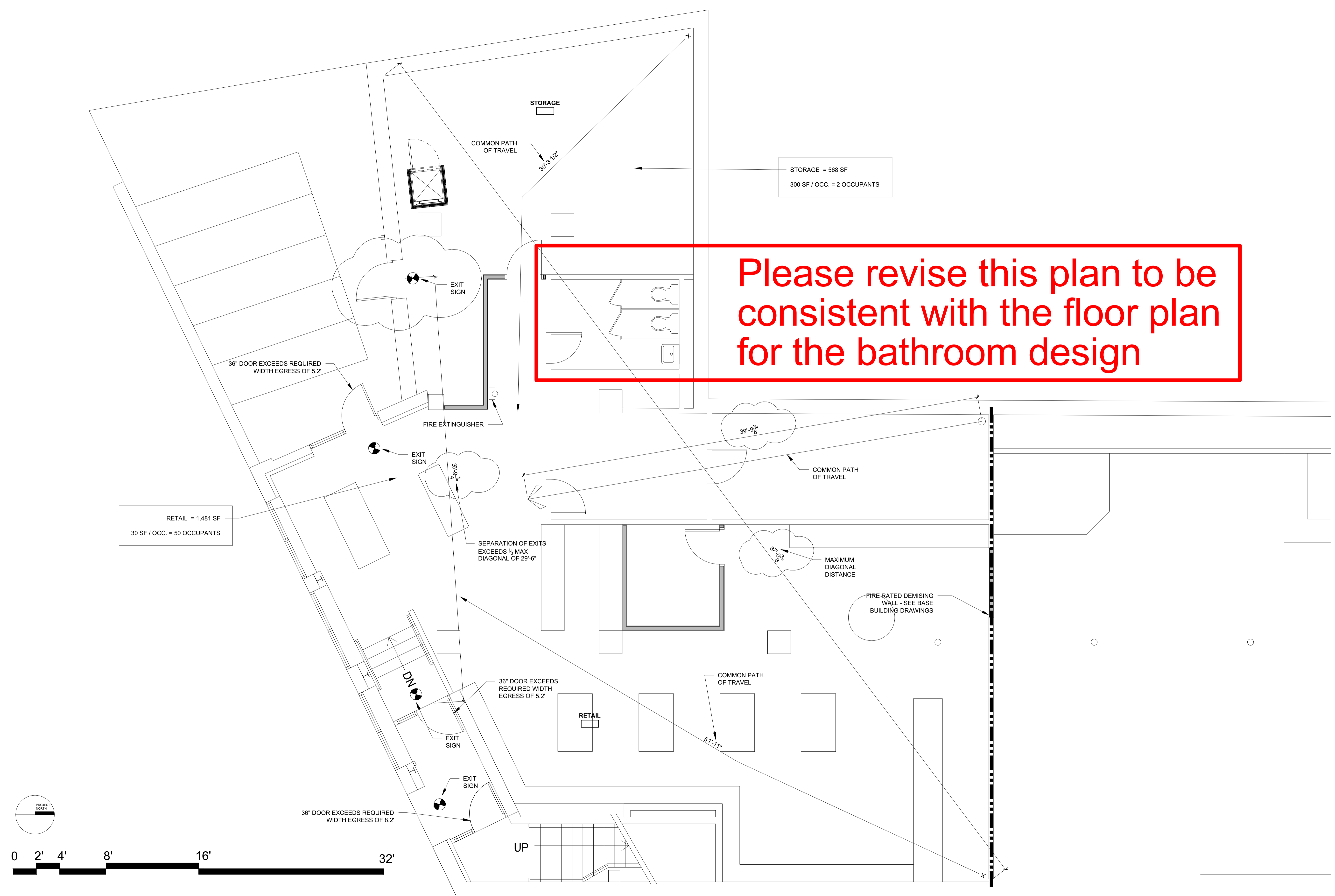
DRAWN BY: RRT, RJS

CHECKED BY: RJS

SCALE: AS NOTED

SHEET TITLE:  
LIFE SAFETY -  
BASEMENT PLAN

G1-2



1 BASEMENT PLAN - LIFE SAFETY PLAN  
1/4" = 1'-0"