

Continue (1) 1.75x14 LV 8ft. Past Corner as Shown and Bolt to Exist. CMU Provide 4ft. Splice Piece at Butt Joints Fasten to CMU with (2) Rows of 3/4" Hilti-Kwik Bolts Spaced at 24"oc.—Grout Block Cells Full

Exist. 2x10 Joists @ 16"oc
Add Joist Hangers to Both Ends

New L4x3.5x5/16 Galvanized Lintel
New W8x18 Lintel with 3/8" Top Plate

New L4x3.5x5/16 Galvanized Lintel
New W8x18 Lintel with 3/8" Top Plate

New L4x3.5x5/16 Galvanized Lintel
New W8x18 Lintel with 3/8" Top Plate

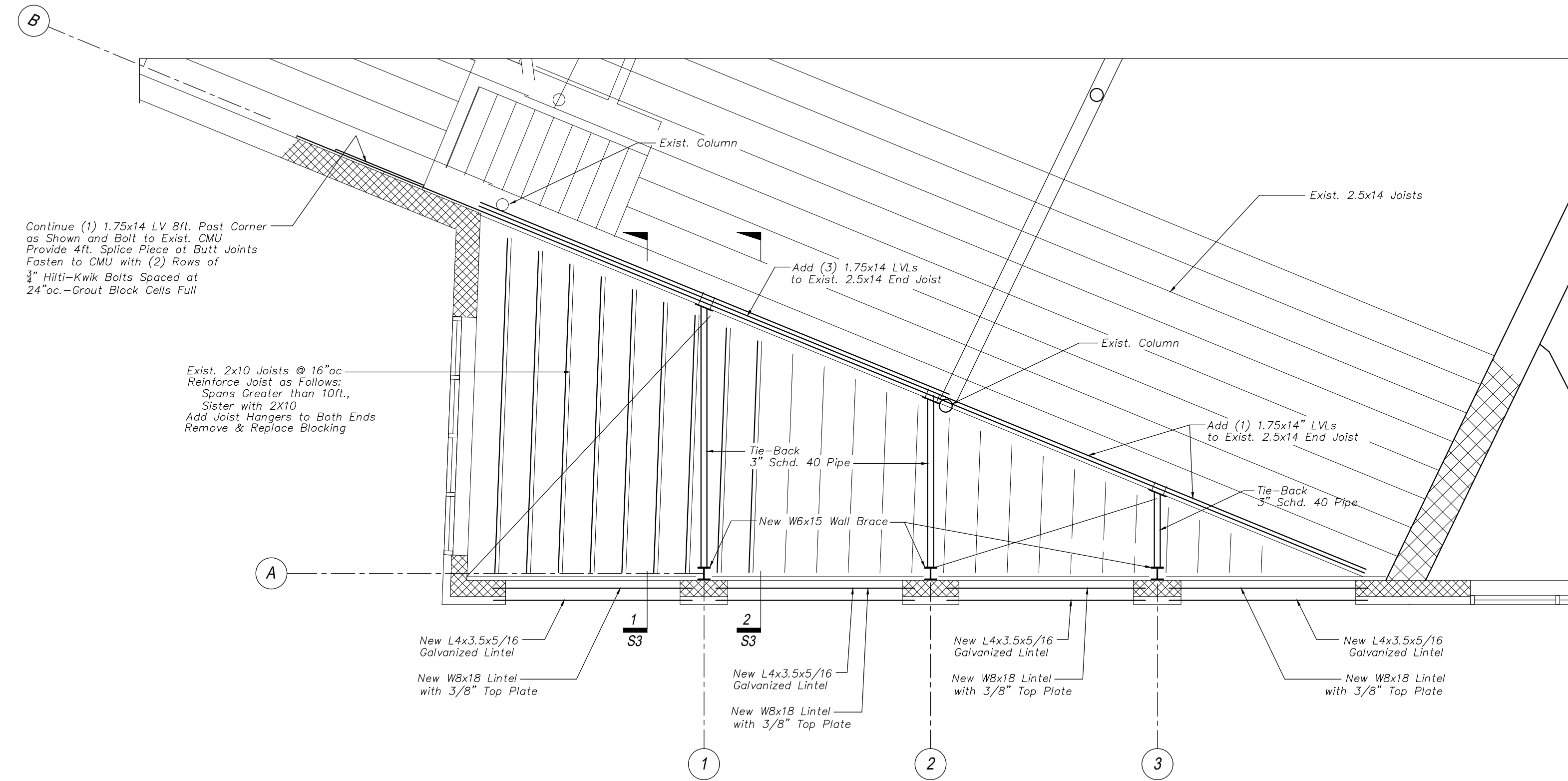
New L4x3.5x5/16 Galvanized Lintel
New W8x18 Lintel with 3/8" Top Plate

ROOF FRAMING PLAN

Scale: 1/2" = 1'-0"

STRUCTURAL STEEL NOTES - GENERAL:

1. STRUCTURAL STEEL FABRICATION, ERECTION, AND CONNECTION DESIGN SHALL CONFORM TO AISC "SPECIFICATION FOR THE DESIGN, FABRICATION, AND ERECTION OF STRUCTURAL STEEL" 13th EDITION.
2. ALL STEEL WIDE FLANGE SHAPES TO BE A572/A992 50 KSI AND STEEL PLATES TO BE ASTM A36 UNLESS NOTED OTHERWISE.
3. STRUCTURAL TUBING SHALL CONFORM TO ASTM A500, GRADE B. STEEL PIPES SHALL BE A53, GRADE B.
4. ALL BOLTED CONNECTIONS SHALL BE MADE WITH 3/4" DIA. ASTM A325 HIGH STRENGTH BOLTS.
5. WELDING SHALL BE IN ACCORDANCE WITH AWS D1.1 - LATEST EDITION. ALL WELDS SHALL BE MADE WITH E70XX ELECTRODES.
6. STRUCTURAL STEEL SHALL BE PAINTED WITH A SHOP APPLIED COAT OF THE FABRICATOR'S RUST INHIBITIVE PRIMER.
7. SUBMIT COMPLETE STRUCTURAL STEEL SHOP DRAWINGS FOR REVIEW PRIOR TO ANY STEEL FABRICATION.



Continue (1) 1.75x14 LV 8ft. Past Corner as Shown and Bolt to Exist. CMU Provide 4ft. Splice Piece at Butt Joints Fasten to CMU with (2) Rows of 3/4" Hilti-Kwik Bolts Spaced at 24"oc.—Grout Block Cells Full

Exist. 2x10 Joists @ 16"oc
Reinforce Joist as Follows:
Spans Greater than 10ft.,
Slater with 2x10
Add Joist Hangers to Both Ends
Remove & Replace Blocking

New L4x3.5x5/16 Galvanized Lintel
New W8x18 Lintel with 3/8" Top Plate

New L4x3.5x5/16 Galvanized Lintel
New W8x18 Lintel with 3/8" Top Plate

New L4x3.5x5/16 Galvanized Lintel
New W8x18 Lintel with 3/8" Top Plate

New L4x3.5x5/16 Galvanized Lintel
New W8x18 Lintel with 3/8" Top Plate

SECOND FLOOR FRAMING PLAN

Scale: 1/2" = 1'-0"

WOOD FRAMING NOTES:

1. STRUCTURAL LUMBER: No. 2 SPRUCE PINE FIR OR BETTER.
F_b = 750 PSI F_v = 70 PSI
F_c = 975 PSI E = 1100000 PSI
2. DESIGN CODE: NATIONAL DESIGN SPECIFICATIONS FOR WOOD CONSTRUCTION BY THE NATIONAL FOREST PRODUCTS ASSOCIATION.
3. FASTENERS: COMPLY WITH RECOMMENDED FASTENING SCHEDULE OF THE INTERNATIONAL BUILDING CODE, 2009 EDITION, UNLESS SHOWN OTHERWISE ON THE DRAWINGS.
4. SPIKE TOGETHER ALL FRAMING MEMBERS WHICH ARE BUILT-UP USING MULTIPLE 2x LUMBER.
5. PROVIDE PRESSURE TREATED LUMBER FOR ALL LUMBER IN CONTACT WITH MASONRY OR CONCRETE.

SEI
Shelley Engineering, Inc.
Structural Consultants
P.O. Box 1030
Gray, Maine 04039
Phone (207) 687-8031
www.ShelleyEngineering.com

BUILDING RENOVATIONS
6 CITY CENTER

ME

Portland

Issue	Date
For Permit	8/31/16
Construction	9/12/16



SHEET TITLE:

Second Floor &
Roof
Framing Plans

S2 of 5

SEI Job # 2016-141