

**Michael Charek  
Architects**

25 Hartley Street  
Portland, Maine 04103  
(207) 761-0556

**6 City Center  
Exterior Renovations**

6 City Center  
Portland, ME 04101

**Title**

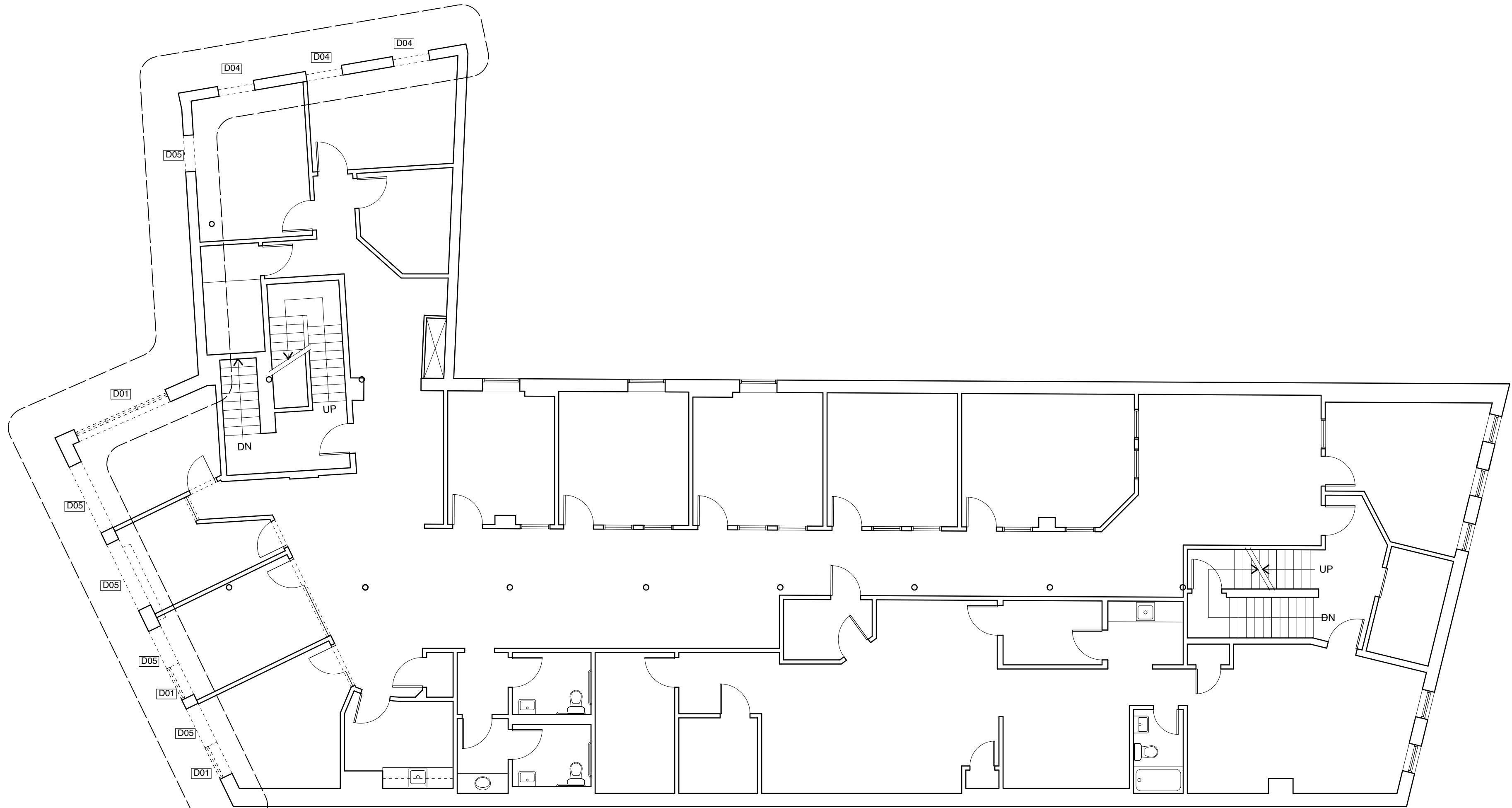
SECOND FLOOR  
DEMOLITION PLAN

**Scale:** 1/8" = 1'-0"

**Date:** 9/15/16

**Sheet**

**D1.3**



LIMIT OF WORK AREA

**1 SECOND FLOOR DEMOLITION PLAN**  
SCALE: 1/8" = 1'-0"  
2' 4' 8' 16'

**DEMOLITION KEY**  
 ——— EXISTING TO REMAIN  
 - - - - - EXISTING TO BE REMOVED

- DEMOLITION KEYNOTES -- DEMOLITION SHEETS ONLY**
- D01** REMOVE WINDOW
  - D02** REMOVE DOOR AND FRAME
  - D03** REMOVE FIRE ESCAPE
  - D04** REMOVE MASONRY FROM PREVIOUS EXISTING OPENING
  - D05** CUT NEW WINDOW OPENING
  - D06** CUT NEW ENTRY OPENING THROUGH MASONRY AND FOUNDATION
  - D07** REMOVE PARTITION
  - D08** REMOVE PLUMBING FIXTURES AND CAP OFF SUPPLY, WASTE, AND VENT PIPING
  - D09** REMOVE CASEWORK
  - D10** REMOVE ELECTRICAL PANELS FOR RELOCATING TO EXISTING TENANT SPACE

**NOTES**

1. WORK ON THIS FLOOR IS LIMITED TO EXTERIOR MASONRY WALL AND WINDOWS.

