

DOOR SCHEDULE												
NO.	DOOR TYPE	MAT.	FIN.	WIDTH	HEIGHT	THICK.	FRAME TYPE	MAT.	FIN.	HDWR.	FIRE RATING	NOTES
201	EXG	WD/GL	PT	3'-0"	6'-8"	1 3/4"	EXG	WD	PT	EXG	--	1
209	EXG	WD/GL	PT	3'-0"	6'-8"	1 3/4"	EXG	WD	PT	EXG	--	4
210	EXG	WD / GL	PT	3'-0"	6'-8"	1 3/4"	EXG	WD	PT	EXG	--	2
211	EXG	WD / GL	PT	3'-0"	6'-8"	1 3/4"	EXG	WD	PT	EXG	--	3
212	1	WD / SC	PT	3'-0"	6'-8"	1 3/4"	A	HM	PT	HW-1	--	
213	2	GL	FF	3'-0"	8'-0"	1/2"	--	--	--	HW-2	--	
214	2	GL	FF	3'-0"	8'-0"	1/2"	--	--	--	HW-2	--	
215	2	GL	FF	3'-0"	8'-0"	1/2"	--	--	--	HW-2	--	
216	2	GL	FF	3'-0"	8'-0"	1/2"	--	--	--	HW-2	--	
218	1	WD / SC	PT	3'-0"	6'-8"	1 3/4"	A	HM	PT	HW-3	--	

MATERIAL/FINISH ABBREVIATIONS

EXG EXISTING
 FF FACTORY FINISH
 GL GLASS
 PT PAINT
 SC SOLID CORE
 WD WOOD

HARDWARE

HW-1 3 HINGES
 1 LOCKSET
 1 STOP
 HW-2 MFR STANDARD PIVOT HINGES,
 PUSH-PULL, DEADBOLT LOCK,
 CONCEALED CLOSER
 HW-3 3 HINGES
 1 PRIVACY SET
 1 STOP

NOTES

1. INSTALL EXISTING DOOR X01, FRAME, AND HARDWARE
2. INSTALL EXISTING DOOR X02, FRAME, AND HARDWARE
3. INSTALL EXISTING DOOR X03, FRAME, AND HARDWARE
4. INSTALL EXISTING DOOR X04, FRAME, AND HARDWARE. REVERSE DOOR SWING.

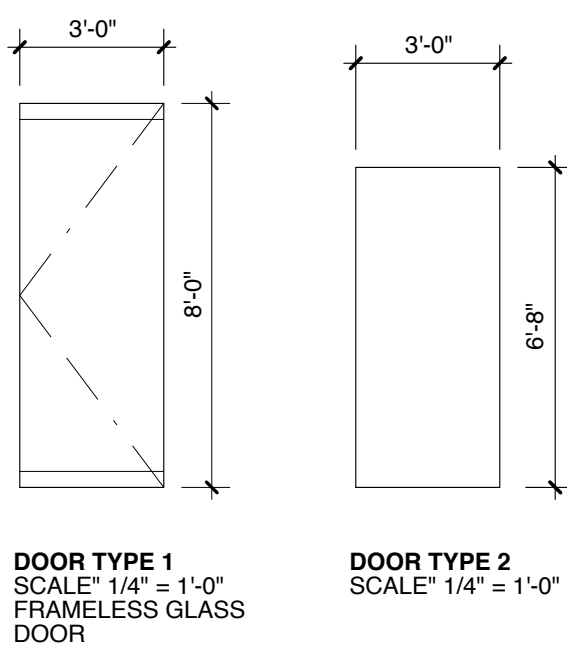
ROOM FINISH SCHEDULE									
NO.	NAME	FLOORS	BASE	WALLS	TRIM	CEILING	MAT.	NOTES	
201	CONFERENCE	CPT	WD - EXG	PT	PT	10'-0" EXG	EXG		
202	RECEPTION	CER	EXG	PT	PT	9'-0" EXG	EXG		
203	CONFERENCE	CPT	EXG	PT	PT	9'-0" EXG	EXG		
204	OFFICE	CPT	EXG	PT	PT	9'-0" EXG	EXG		
205	OFFICE	CPT	EXG	PT	PT	9'-0" EXG	EXG		
206	OFFICE	CPT	EXG	PT	PT	9'-0" EXG	EXG		
207	OFFICE	CPT	EXG	PT	PT	9'-0" EXG	EXG		
208	HALL	CPT	WD	PT	PT	9'-0"	ACT		
209	OFFICE	CPT	WD	PT	PT	9'-0"	ACT	1	
210	OFFICE	CPT	WD	PT	PT	9'-0"	ACT	1	
211	OFFICE	CPT	WD	PT	PT	9'-0"	ACT	1	
212	MECHANICAL	VCT	VB	PT	PT	8'-0"	ACT		
213	OFFICE	CPT	WD	PT	PT	11'-0"	ACT	1	
214	OFFICE	CPT	WD	PT	PT	11'-0"	ACT	1	
215	OFFICE	CPT	WD	PT	PT	11'-0"	ACT	1	
216	OFFICE	CPT	WD	PT	PT	11'-0"	ACT	1	
217	KITCHEN	VCT	EXG	PT	PT	9'-0" EXG	EXG		
218	WASHROOM	CER	EXG	PT	PT	8'-0" EXG	EXG		
219	TOILET	CER	EXG	PT	PT	8'-0" EXG	EXG		
220	TOILET	CER	EXG	PT	PT	8'-0" EXG	EXG		
221	HALL	CPT	EXG	PT	PT	8'-0" EXG	EXG		
222	CLOSET	CPT	EXG	PT	PT	8'-0" EXG	EXG		
223	OPEN OFFICE	CPT	EXG	PT	PT	VARIES	EXG	2	
224	CORRIDOR	CPT	EXG	PT	PT	VARIES	EXG	2	

MATERIAL/FINISH ABBREVIATIONS

ACT ACOUSTICAL SUSPENDED CEILING
 CPT CARPET
 CER CERAMIC TILE
 EXG EXISTING
 PT PAINT
 VB VINYL BASE
 VCT VINYL COMPOSITION TILE
 WD WOOD

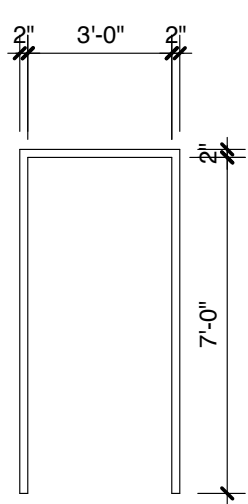
NOTES

1. ADJUST CEILING HEIGHT AS NEEDED TO CLEAR WINDOW HEAD.
2. PAINT EXISTING GYPSUM BOARD CEILING.
3. NEW WALL AND CEILING FINISHES MUST BE CLASS A OR CLASS B IN EXIT ACCESS CORRIDORS.
4. NEW WALL AND CEILING FINISHES MUST BE CLASS A, CLASS B, OR CLASS C IN ALL OTHER AREAS.
5. ALL CARPET MATERIALS SHALL HAVE A MINIMUM CRITICAL RADIANT FLUX OF 0.1 W / CM SEE FLOORING PLAN FOR FLOORING LAYOUT.



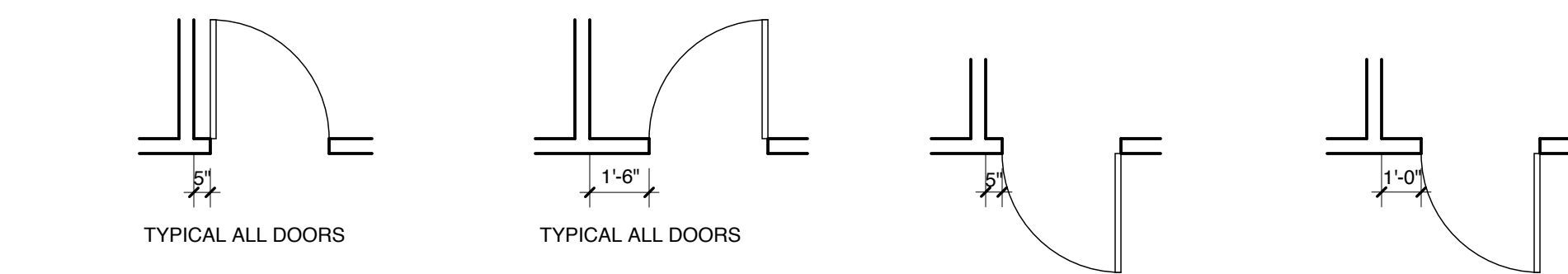
DOOR TYPE 1
 SCALE: 1/4" = 1'-0"
 FRAMELESS GLASS DOOR

DOOR TYPE 2
 SCALE: 1/4" = 1'-0"



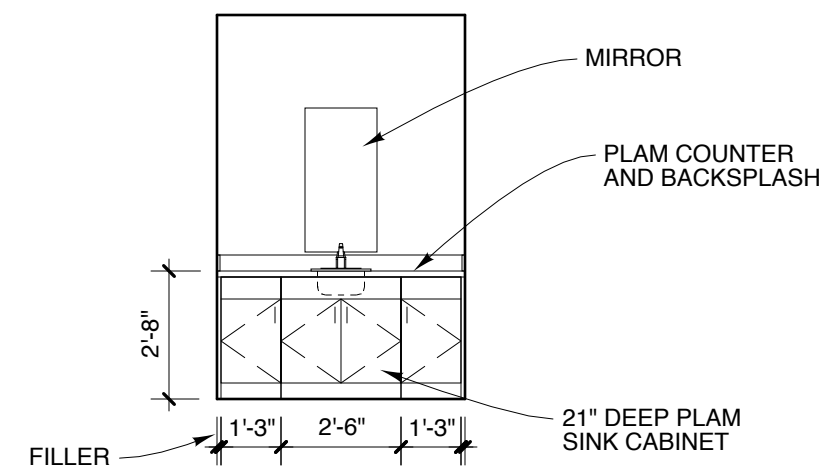
FRAME TYPE A
 SCALE: 1/4" = 1'-0"

FRAME TYPE A
 SCALE: 1/4" = 1'-0"



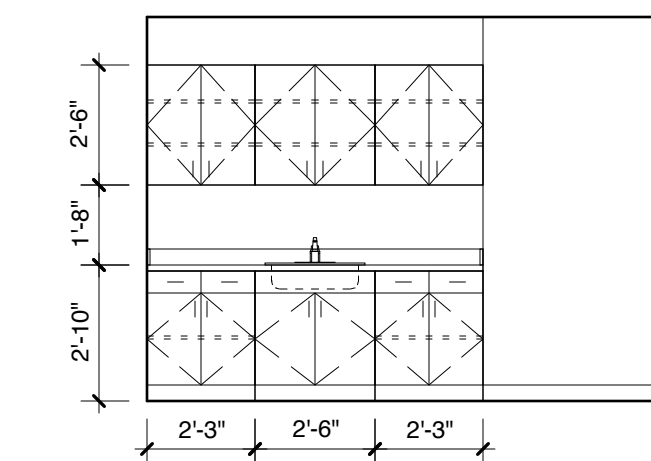
1 TYPICAL DOOR JAMB CLEARANCES

SCALE: 1/4" = 1'-0"
 1' 2' 4' 8'



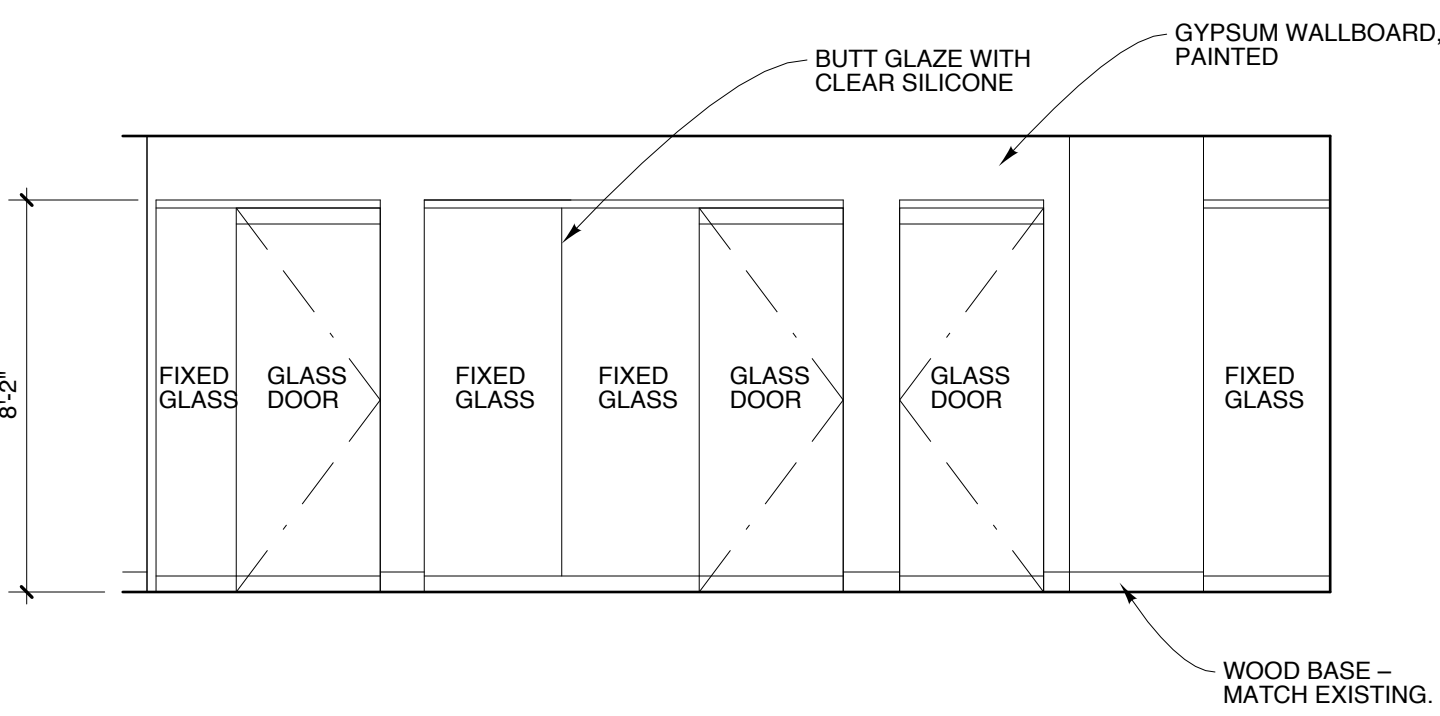
4 ELEVATION

SCALE: 1/4" = 1'-0"
 1' 2' 4' 8'



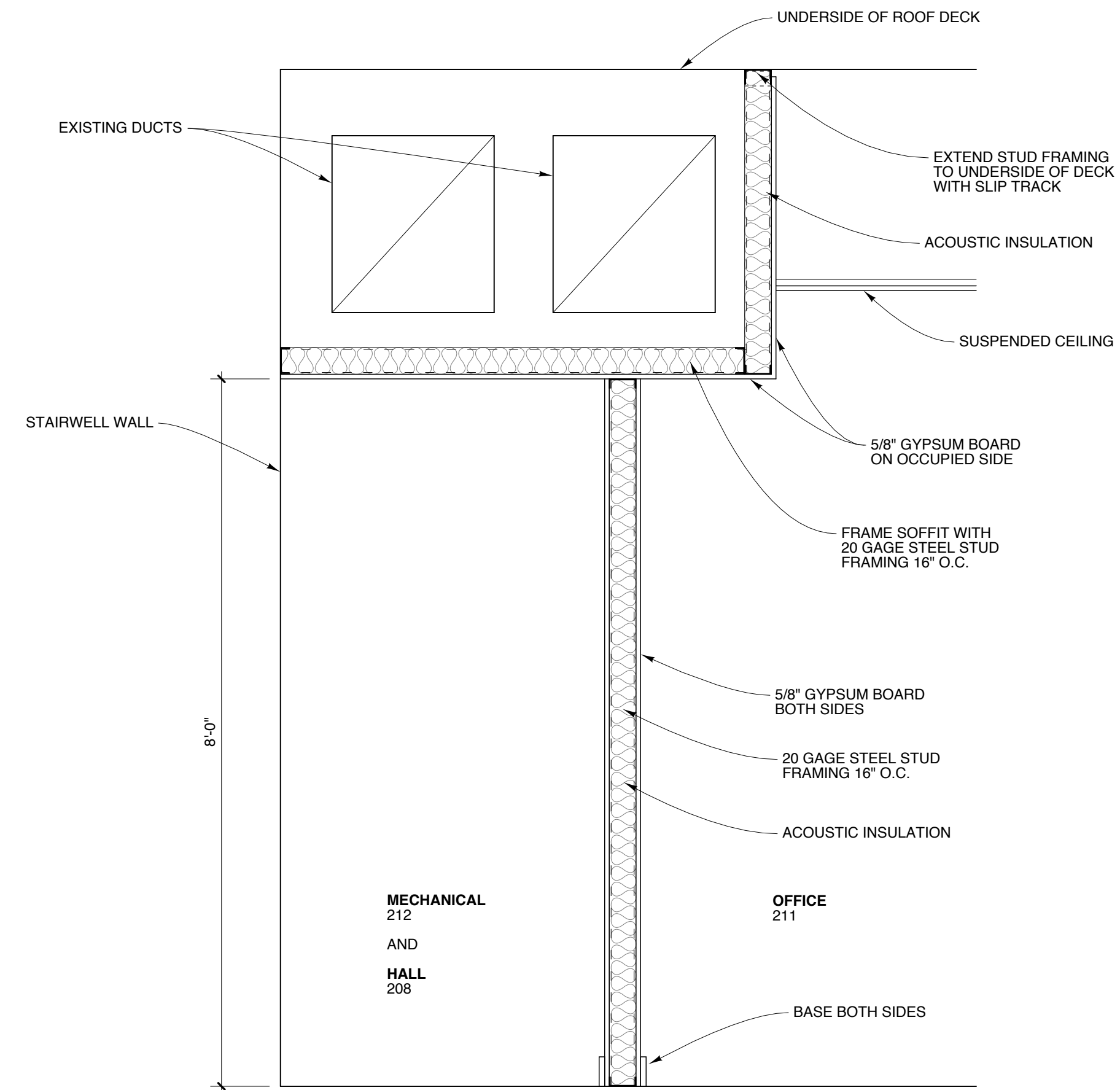
3 ELEVATION

SCALE: 1/4" = 1'-0"
 1' 2' 4' 8'



2 ELEVATION

SCALE: 1/4" = 1'-0"
 1' 2' 4' 8'



5 SECTION

SCALE: 3/4" = 1'-0"
 4' 8' 1'-4" 2'-8"

Michael Charek Architects

25 Hartley Street
 Portland, Maine 04103
 (207) 761-0556



Second Floor Renovations

6 City Center
 Portland, ME 04101

Title

SCHEDULES

Scale: 1/8" = 1'-0"

Date: 8/16/16

Revisions

ISSUED FOR PERMIT

Sheet

A2