

GENERAL CONTRACTOR

STRUCTURAL ENGINEER

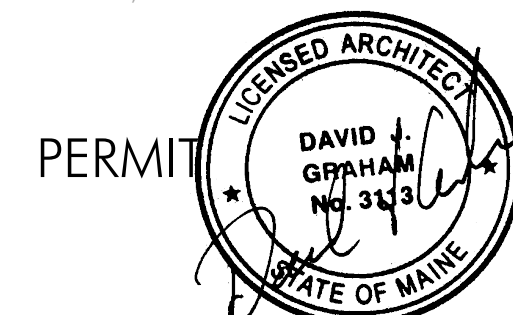
MEP ENGINEER

CLIENT



PROJECT

TIAA  
 Interior Office  
 Renovation  
 4 City Center  
 Portland, ME 04106



INFORMATION

Path: M./boulos/liaa  
 Issue Date: 06/08/16  
 Drawn By: dijg  
 Checked By:  
 Revision:  
 1.  
 2.  
 3.  
 4.

TITLE

DOOR SCHEDULES AND WALL TYPES

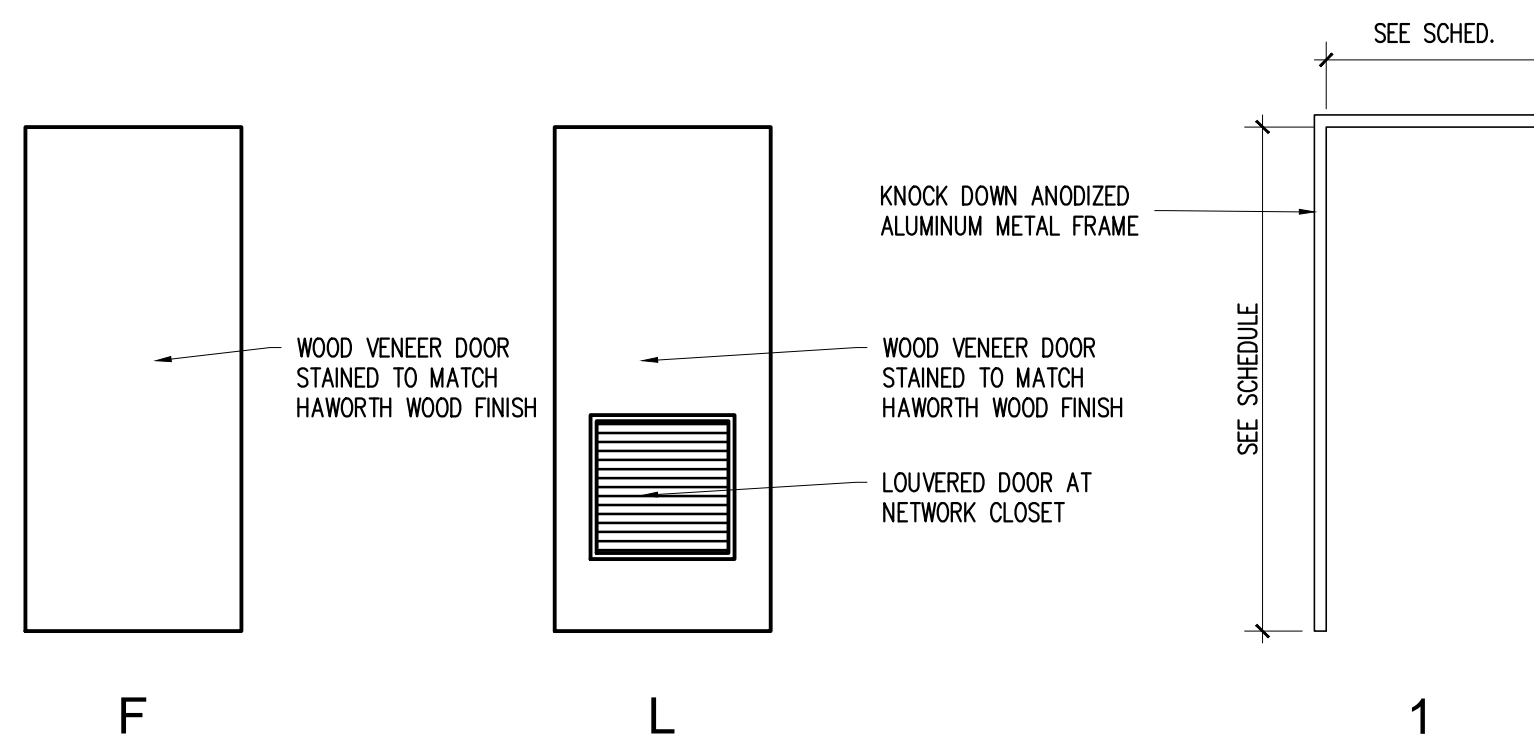
SCALE AS NOTED

© 2016 Graham Architects. All rights reserved. Information, material, and designs in this document are proprietary to and owned by Graham Architects, and may not be disclosed to any third party, reproduced, posted on a global computer information network, or distributed in any way without the written consent from Graham Architects.

## DOOR SCHEDULE

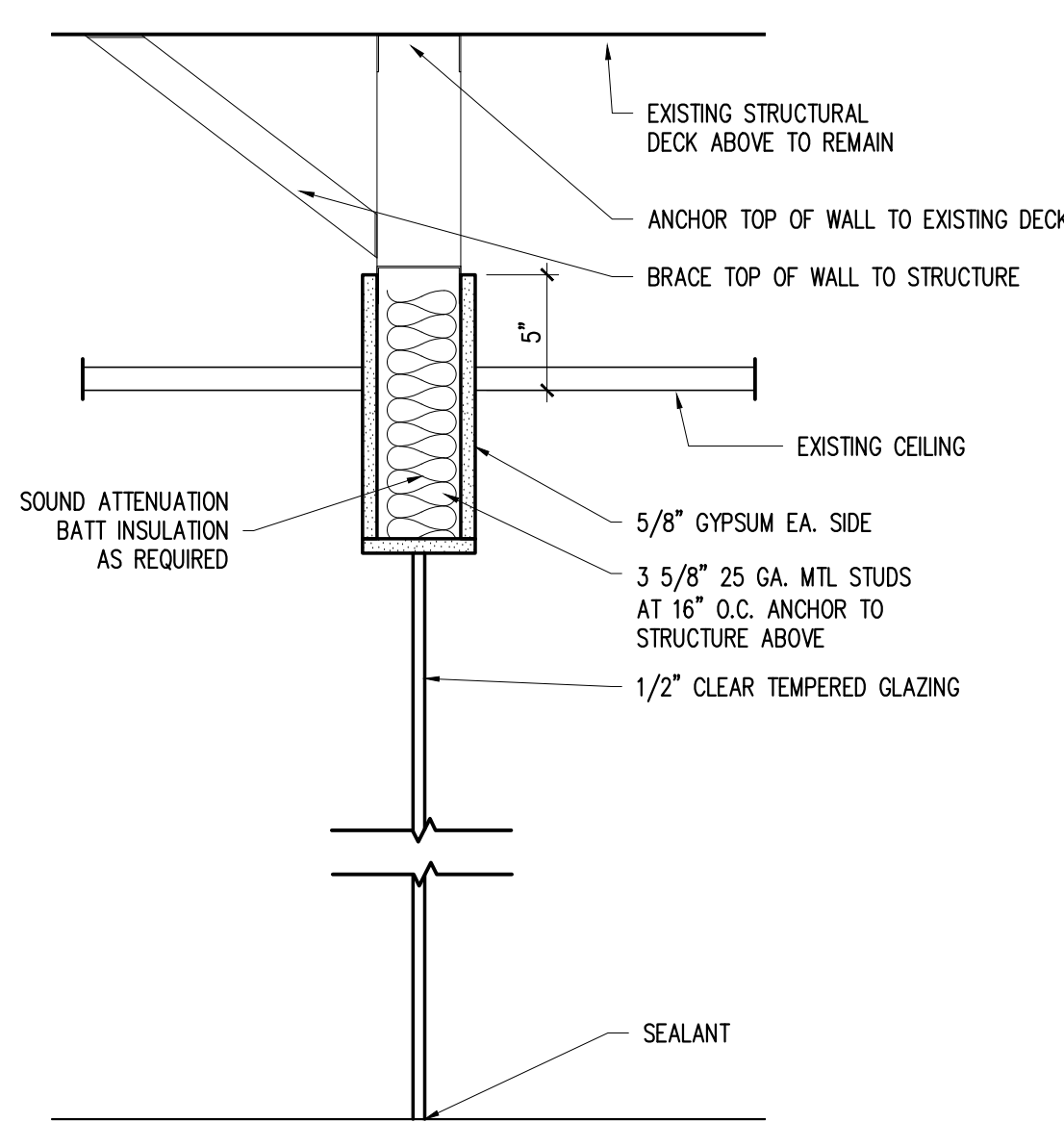
DOOR NUMBER	DOOR			GLAZING	FRAME			HWS	FIRE RATING (MIN.)	DOOR NUMBER	REMARKS
	SIZE	MATERIAL	ELEVATION		MATERIAL	ELEVATION	HEAD				
01	3'-0" x 7'-0" x 1-3/4"	1/2" GLASS	-	TEMP.	NONE	-			-	01	LOCK, CLOSER, CARD READER ( Elec. Strike)
02	3'-0" x 7'-0" x 1-3/4"	SC	F	-	ALUM	1	7/A0.2	8/A0.2	3	02	DUMMY SET, BALL CATCH
03	3'-0" x 7'-0" x 1-3/4"	SC	L	-	ALUM	1	7/A0.2	8/A0.2	3	03	DUMMY SET, BALL CATCH
04	3'-0" x 7'-0" x 1-3/4"	SC	F	-	ALUM	1	7/A0.2	8/A0.2	1	04	PASSAGE SET

NOTE:  
 1. PROVIDE COAT HOOKS ON BACKS OF ALL DOORS @ 48" AFF OR LAURENCE DRH1PN  
 2. PROVIDE DOOR STOPS

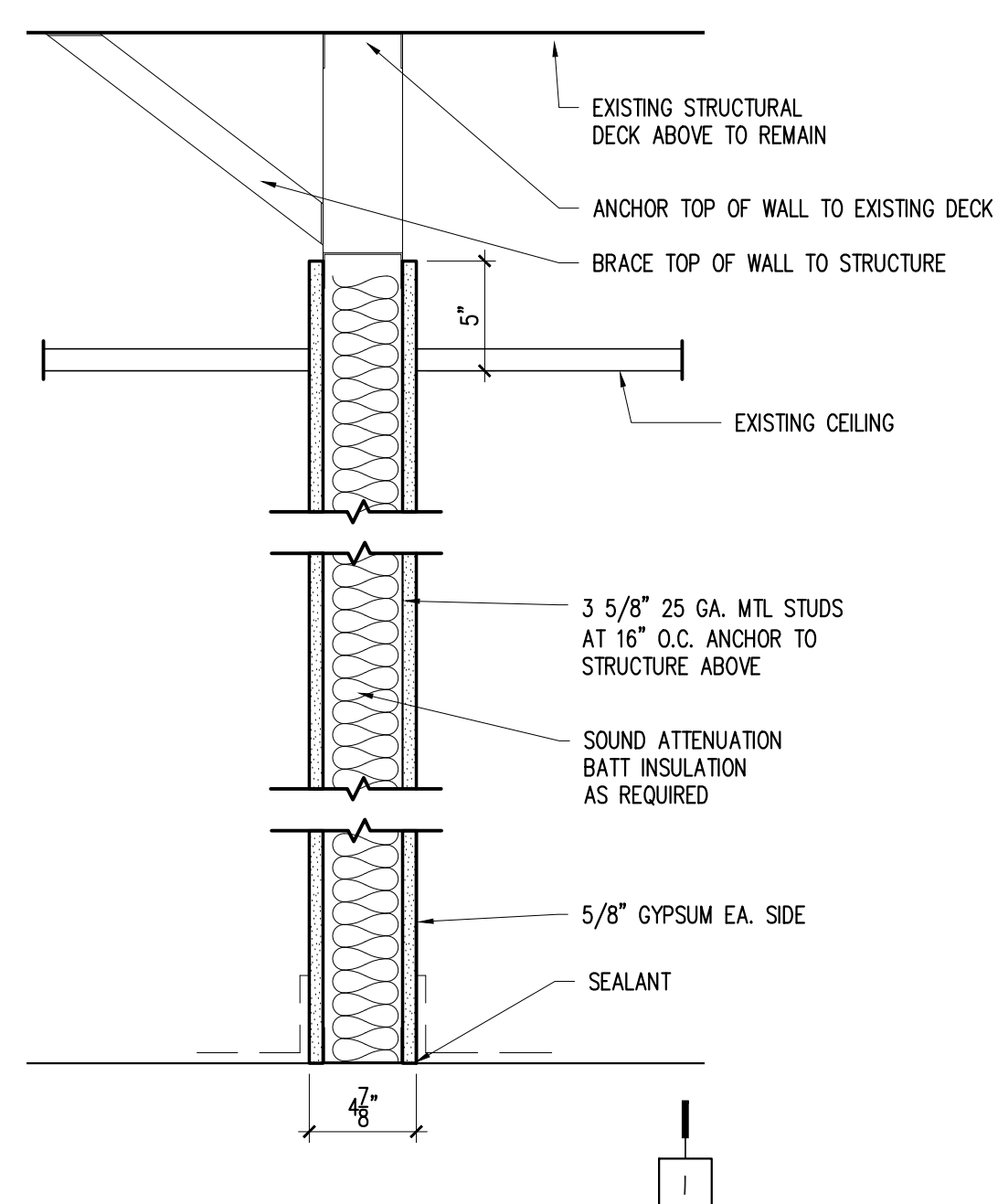


- SYMBOL  $\checkmark$  SHOWN ON SCHEDULE INDICATES A REPEAT OF A PREVIOUS REFERENCE ON THE SCHEDULE.
- ALL DOORS ARE 1-3/4" THICK UNLESS OTHERWISE NOTED
- DOOR MATERIAL  
 TYPICAL - SC - SOLID CORE HC - HOLLOW CORE  
 HM - HOLLOW METAL AL - ALUMINUM & GLASS
- FINISH  
 TYPICAL - WV - WOOD VENEER PL - PLASTIC LAMINATE  
 MP - METAL PAINTED AP - ALUMINUM PAINTED  
 PT - PAINTED
- GLASS  
 TYPICAL - CW - CLEAR WIRE CP - CLEAR PLATE  
 TP - TEMPERED LG - LEADED GLASS
- FRAME  
 TYPICAL - FF - FLUSH FRAME AL - ALUMINUM  
 HM - HOLLOW METAL WD - WOOD  
 AP - ALUMINUM PAINTED
- MAXIMUM GLASS AREA FOR 45 MIN. AND 20 MIN. DOOR SHALL NOT EXCEED 1296 SQ.IN. AND HAVE A MAX. LITE DIMENSION OF 54". MAXIMUM GLASS AREA FOR 90 MIN. DOOR SHALL BE 100 SQ.IN.
- DOOR NO. 2 REFER TO SCHEDULE FOR HARDWARE, MODIFICATIONS, REMARKS, ETC.
- THE FOLLOWING NOTES APPLY TO ALL HOLLOW METAL FRAMES:
  - ALL HOLLOW METAL FRAMES IN MASONRY OPENINGS SHALL BE FULLY GROUTED
  - ALL HOLLOW METAL FRAMES SHALL BE FIELD PAINTED
  - ALL DOOR JAMB ANCHORS SHALL BE VERIFIED WITH PLAN CONDITIONS AND SPECIFICATIONS
  - LABELLED DOOR AND FRAMES SHALL CONFORM TO NFPA NO. 80.
  - PEENED KNOBS SHALL BE PROVIDED FOR ALL DOORS FROM CORRIDORS TO ELECTRICAL CLOSETS, MECHANICAL ROOMS, TELEPHONE CLOSETS, AND STAIR PENTHOUSES
  - ALL FRAMES ARE "WRAP AROUND" UNLESS NOTED

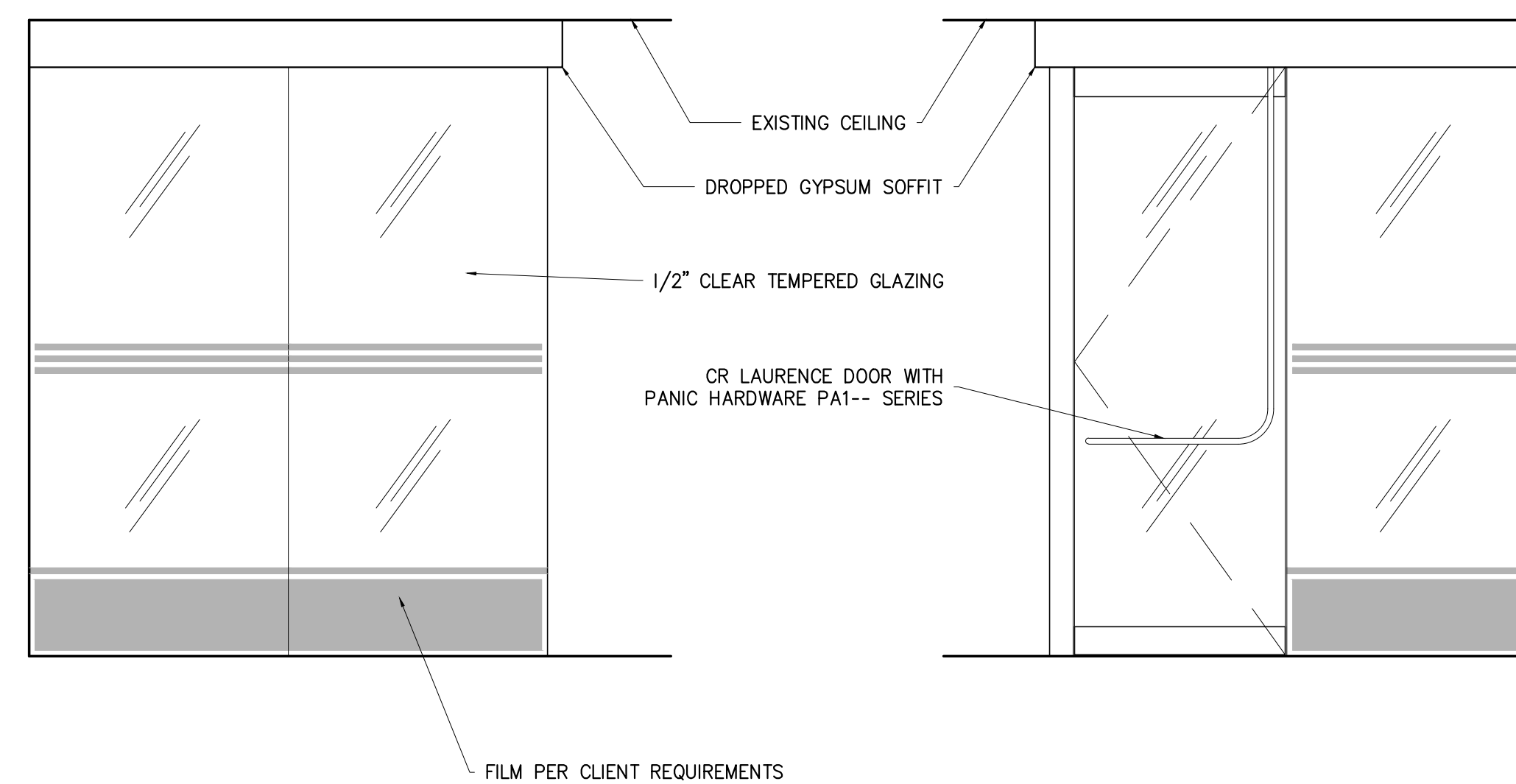
4 1/4"=1'-0" DOOR SCHEDULE



3 1/2"=1'-0" SOFFIT AT ENTRY ENCLOSURE



2 1/2"=1'-0" TYPICAL INTERIOR WALL



1 1/2"=1'-0" ENTRY GLASS ENCLOSURE

DO NOT SCALE DRAWINGS