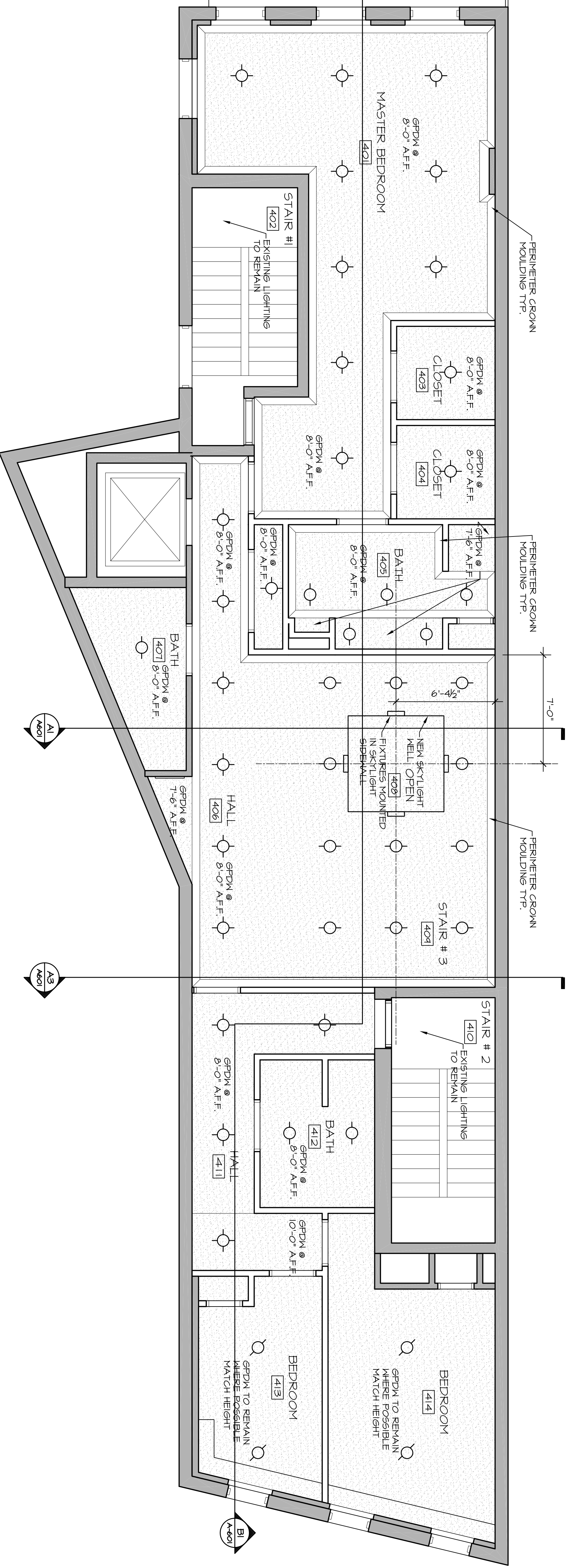


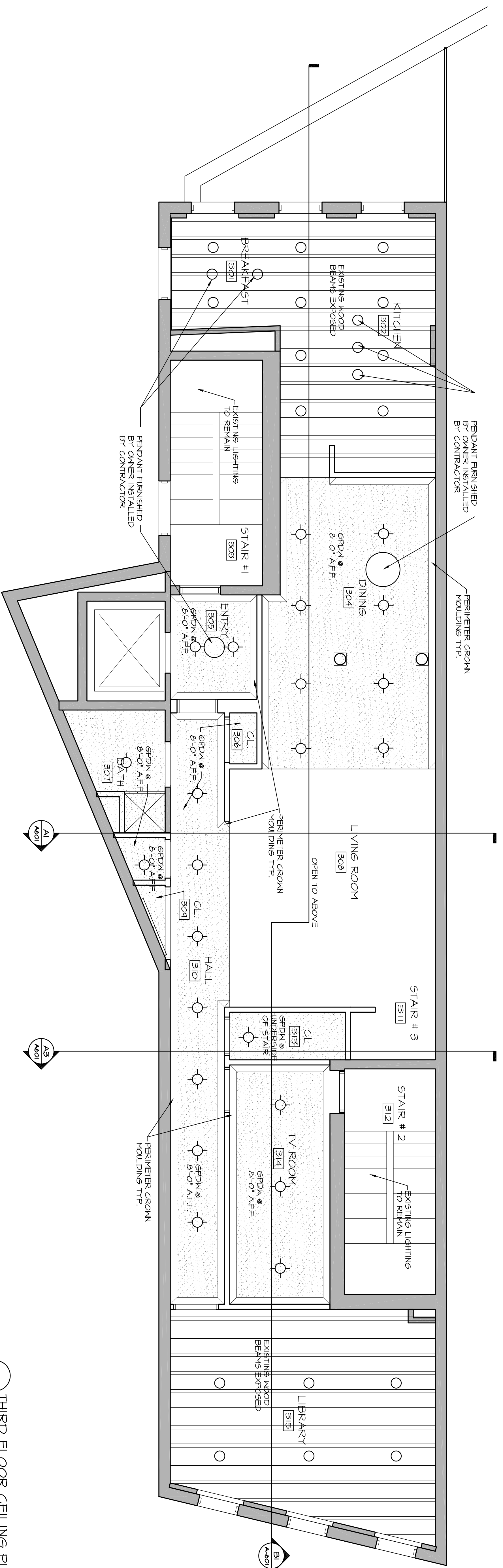
REFLECTED CEILING NOTES	
1.	THIS PLAN IS FOR CEILING CONSTRUCTION AND FIXTURE TYPE AND LOCATIONS ONLY.
2.	EXISTING SPRINKLER AND HVAC SYSTEMS TO BE RECONFIGURED BY DESIGN BUILD CONTRACTOR TO ACCOMMODATE NEW ROOM WHEREVER POSSIBLE. PROVIDE NEW SPRINKLER HEADS IN GPWM TO BE WHITE RECESSED W/ POP DOWN COVER.
3.	PROVIDE FLUSH ACCESS DOORS AS REQUIRED
VERIFY NEW LOCATION OF SPRINKLER HEADS, DIFFUSERS, AND ACCESS PANELS WITH ARCHITECT	

REFLECTED CEILING LEGEND			
A	RECESSED DOWNLIGHTS	E	SURFACE-MOUNT DOWNLIGHTS
B	RECESSED DOWNLIGHTS	F	RECESSED NICHE UPPLIGHTS
C	RECESSED DOWNLIGHTS		GPWM CEILING/ SOFTFI
D	RECESSED DOWNLIGHTS		EXPOSED STRUCTURE/ SUBFLOOR

NO.	MATERIAL	MANUFACTURER	STYLE	REMARKS/LOCATION
A	RECESSED DOWNLIGHT	PRESCOULTE	PBX 6" UNIVERSAL LITEBOX W/ TRIM'S TRIM	THROUGHOUT LIMIT OF WORK U.O.N.
B	RECESSED DOWNLIGHT	PRESCOULTE	PBX 6" UNIVERSAL LITEBOX W/ TRIM'S TRIM	OPEN 408 STAIR #3 409.
C	RECESSED DOWNLIGHT	PRESCOULTE	PBX 6" UNIVERSAL LITEBOX W/ TRIM'S TRIM	BEDROOMS 413, 414.
D	RECESSED DOWNLIGHT	PRESCOULTE	DBX 6" DUAL LABELED LITE BOX W/ TRIM'S TRIM	BATHROOMS 307, 405, 407, 412.
E	SURFACE-MOUNT DOWNLIGHT	PRESCOULTE	LITE FORMS 6" CYLINDER 1105-976 Z	BREAKFAST 301, KITCHEN 302, LIBRARY 315.
F	RECESSED NICHE UPPLIGHT	ELP	176 QD-HITW	SKYLIGHT @ OPEN 408
PROVIDE DIMMING SYSTEM IN ROOMS 302, 304, 308, 310, 315, 401, 406, 408				
PROVIDE 100 CFM EXHAUST FANS IN ROOMS 307, 405, 407, 412				



B1 1/4" = 1'-0"
 FOURTH FLOOR CEILING PLAN



A1 1/4" = 1'-0"
 THIRD FLOOR CEILING PLAN

<p>Cubellis Associates Inc. Architecture Interiors Engineering Boston Philadelphia Chicago Portland, ME 428 Fore Street, 3rd Fl. Portland, ME 04101 Tel: 207-874-2777 Fax: 207-874-2775 www.cubellis.com</p>	TITLE REFLECTED CEILING PLANS	OWNER JERRY ADE
	DATE 12-31-04	SCALE AS NOTED
DRAWN BY DVS	CHECKED BY GDN	NO. DATE REVISIONS 1 12/30/04 ISSUED FOR PERMITTING
A401 04667PT	TITLE REFLECTED CEILING PLANS	OWNER JERRY ADE