

**SHEET NOTES**

- (DL1) REMOVE LIGHTING SWITCHES FOR GENERAL SPACE AND OPEN OFFICE ON WALLS BEING REMOVED. REUSE SWITCHING LEGS, CONDUCTORS AND CONDUIT AS SHOWN ON DRAWING E02-01.
- (DL2) REMOVE ALL EXISTING LIGHTING FIXTURES AND SWITCHES IN THE ROOMS INDICATED. COORDINATE WITH OWNER WHETHER FIXTURES WILL BE SALVAGED. EXISTING CONDUITS AND CONDUCTORS MAY BE REUSED AS POSSIBLE FOR RECONFIGURING OF NEW LIGHTING FIXTURES AND SWITCHES AS DESCRIBED ON DRAWING E02-01. NEW LIGHTING SHALL BE CIRCUITED TO NEW PANEL 3A (LOCATION ON SECOND FLOOR).
- (DL3) REMOVE EXISTING LIGHTING FIXTURES AND CIRCUITING IN THE AREA BEING RENOVATED ON THE THIRD FLOOR. ADJUST CIRCUITING AND SWITCHING FOR FIXTURES THAT WILL REMAIN THAT ARE NOT IN THE PROJECT AREA. VERIFY IN FIELD.
- (DL4) REMOVE EXISTING 2' x 2' PARABOLIC FLUORESCENT LIGHTING FIXTURE AND RELOCATE AS SHOWN ON DRAWING E02-01.
- (DL5) REMOVE EXISTING EMERGENCY LIGHT FIXTURE AND RELOCATE AS SHOWN ON DRAWING E02-01.



2 CITY CENTER, PORTLAND, ME 04101

**Gensler**

214 North Tryon Street  
Suite 2320  
Charlotte, NC 28202  
United States



URS CORPORATION  
MEP ENGINEERS  
27777 FRANKLIN ROAD  
SUITE 2000  
SOUTHFIELD, MI 48034  
Tel 248.204.5900  
Fax 248.204.5901

MONAGHAN WOODWORKS  
100 COMMERCIAL STREET  
SUITE #212  
PORTLAND, ME 04101  
Tel 207.775.2693  
Fax 207.772.6735

**GENERAL NOTES**

Date	Description

Seal / Signature

Project Name

URS - PORTLAND

Project Number

59.6222.900

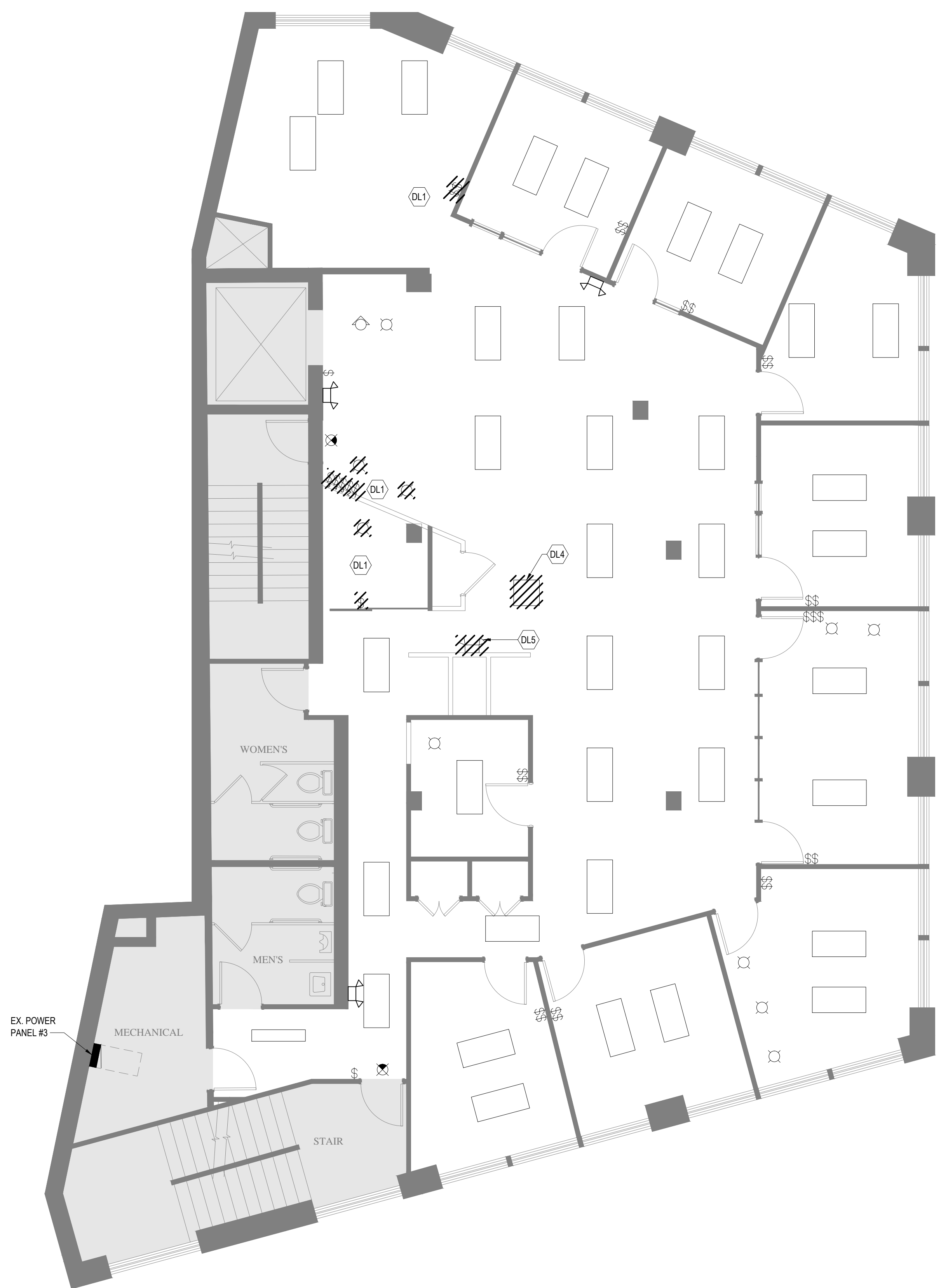
Scale

As indicated

Description

LIGHTING DEMOLITION PLAN -  
LEVEL 02 - 03

**E01-01**



**1 SECOND FLOOR LIGHTING DEMOLITION PLAN**  
SCALE: 3/16"=1'-0"



**2 THIRD FLOOR LIGHTING DEMOLITION PLAN**  
SCALE: 3/16"=1'-0"