

SHEET NOTES



2 CITY CENTER, PORTLAND, ME 04101

Gensler

214 North Tryon Street
Suite 2320
Charlotte, NC 28202
United States
Tel 704.377.2725
Fax 704.377.2807

URS CORPORATION
MEP ENGINEERS
27777 FRANKLIN ROAD
SUITE 2000
SOUTHFIELD, MI 48034
Tel 248.204.5900
Fax 248.204.5901

MONAGHAN WOODWORKS
100 COMMERCIAL STREET
SUITE 212
PORTLAND, ME 04101
Tel 207.775.2683
Fax 207.772.6726

GENERAL NOTES

Date	Description
08/08/14	ISSUED FOR CONSTRUCTION

- A. SEE SHEET 000.03 FOR TYPICAL MOUNTING HEIGHTS OF SWITCHES, OUTLETS, THERMOSTATS, FIRE ALARM PULLS, STROBES, EXIT SIGNS ETC. - NOTIFY ARCHITECT IMMEDIATELY FOR ANY DISCREPANCY
- B. ALL WORK SHOWN ON THIS SHEET SHALL COMPLY WITH REFLECTED CEILING GENERAL NOTES ON SHEET SERIES A03.02 AND A03.03

Seal / Signature

Project Name
URS - PORTLAND

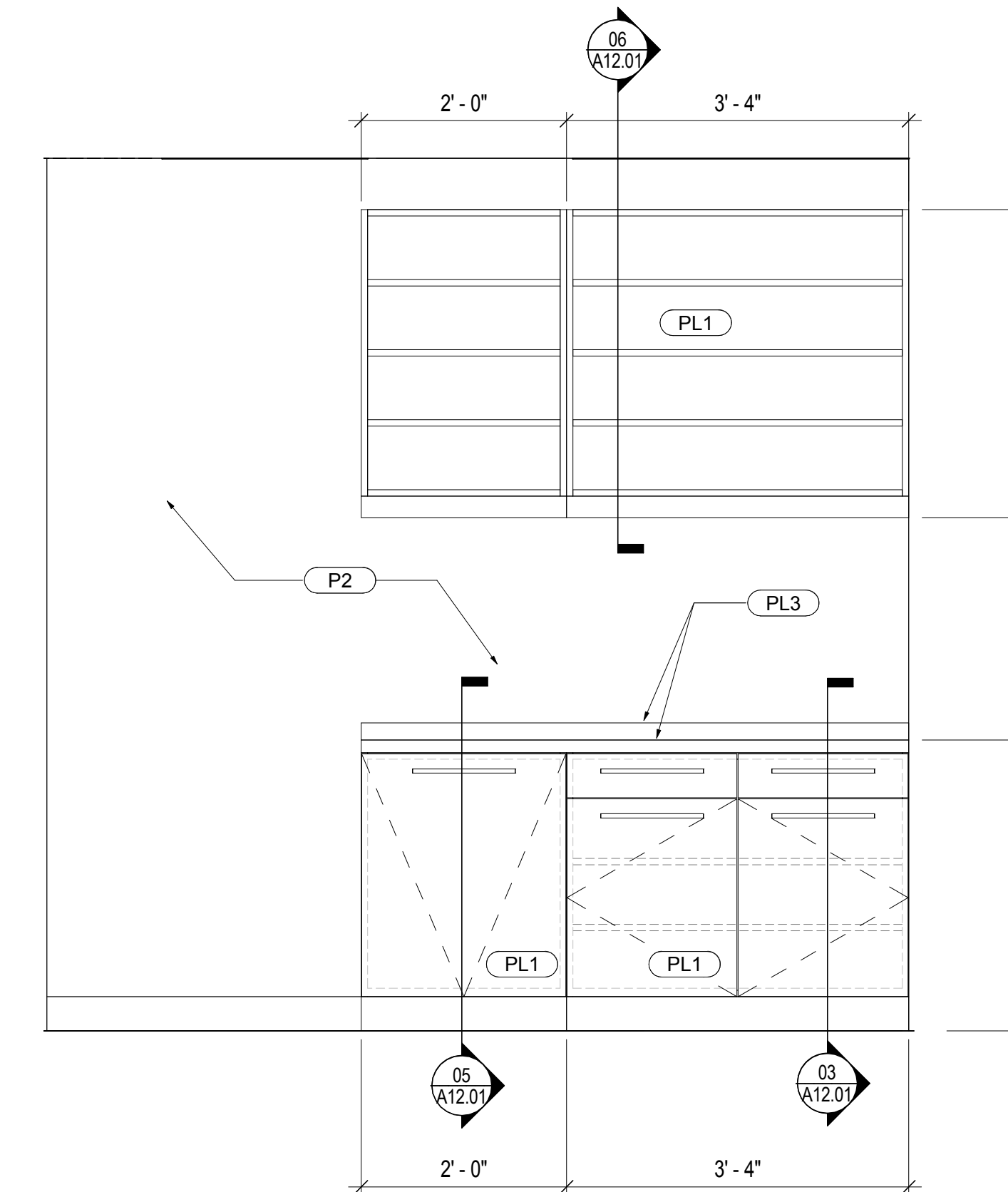
Project Number
59 6222 900

Scale
3/4" = 1'-0"

Description
TYPICAL ENLARGED PLANS & ELEVATIONS

A08.01

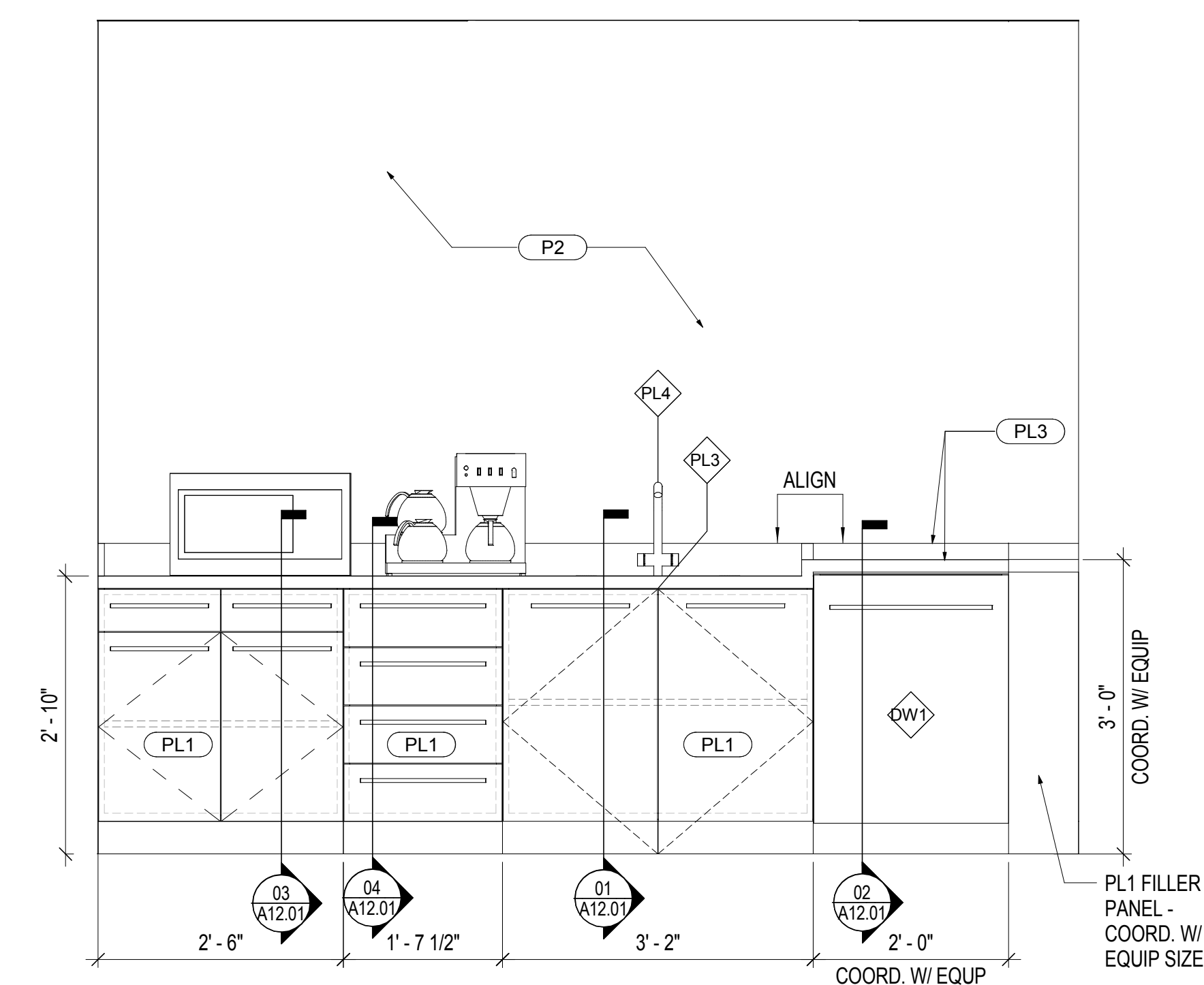
© 2014 Gensler



ELEVATION @ PRINTER NICHE

SCALE: 3/4" = 1'-0"

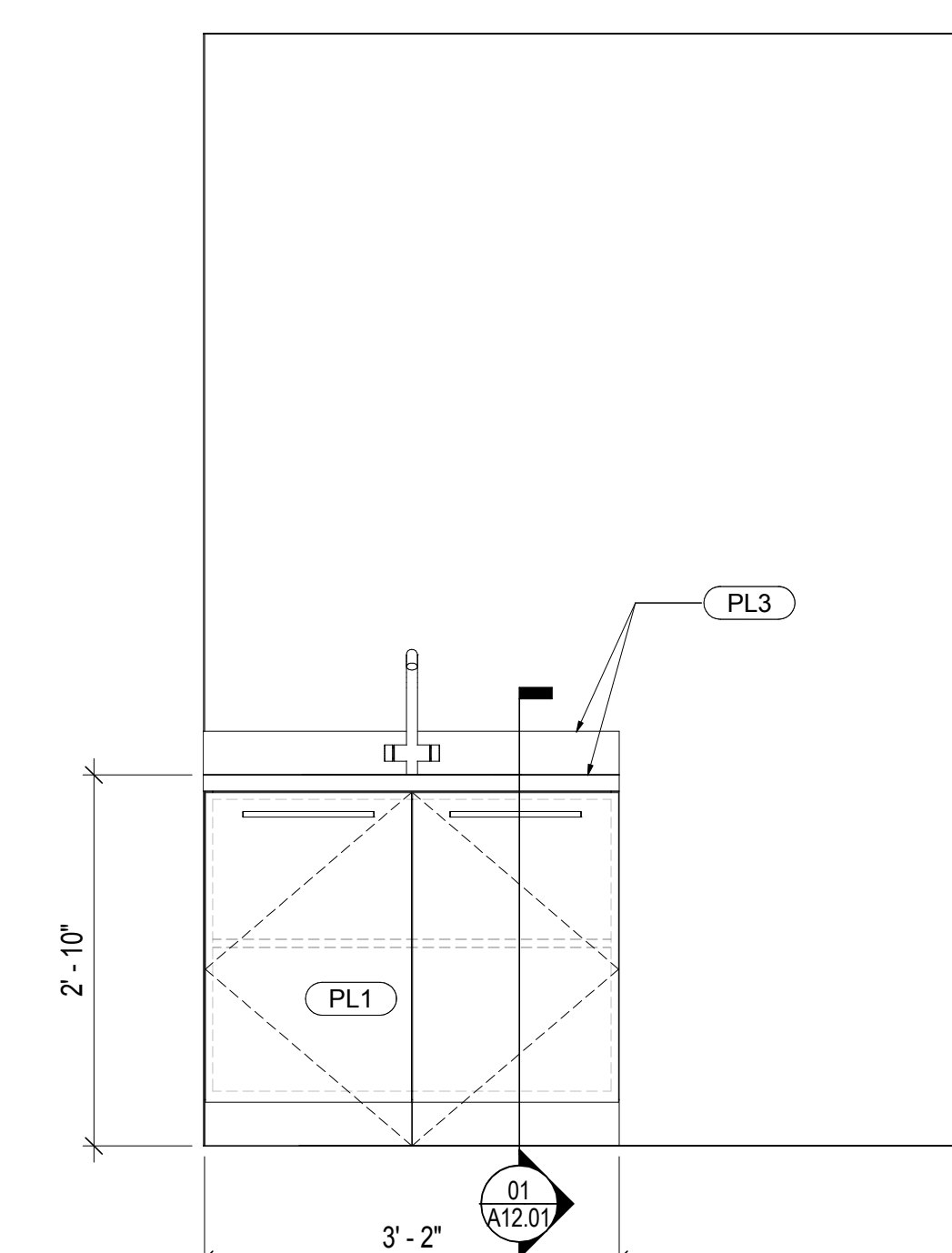
01



ELEVATION @ PANTRY

SCALE: 3/4" = 1'-0"

02



ELEVATION @ WELLNESS ROOM

SCALE: 3/4" = 1'-0"

03