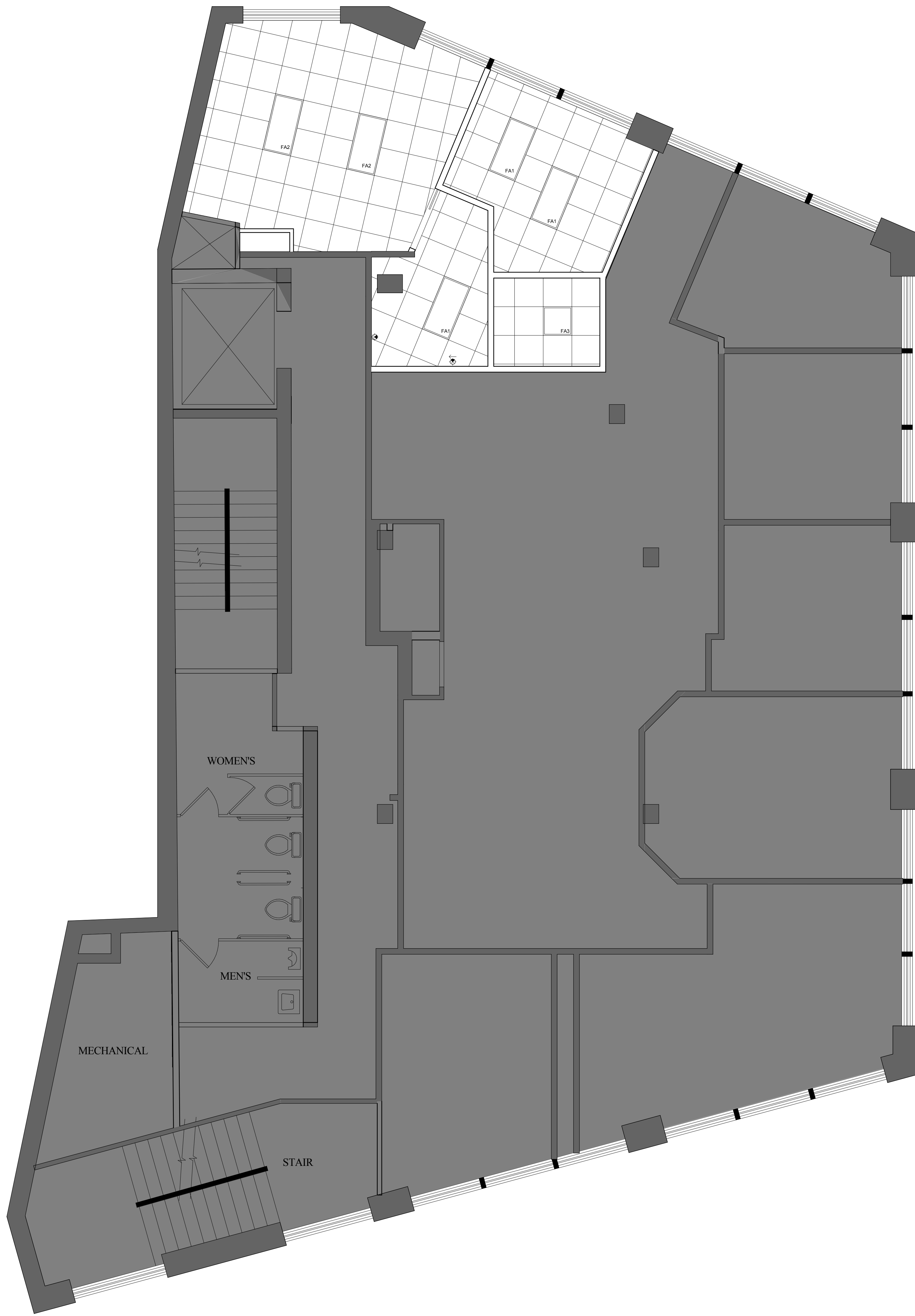


\\gensler-us\projects\portland\21820\URS-Portland_CENTRAL_21820.rvt



SHEET NOTES

- 01 PROVIDE UNDER CABINET LIGHTING @ O.H. CABINETS - SEE SECTION
- 02 RELOCATE ALL DEVICES IN CEILING AS REQUIRED BY NEW WORK. COORDINATE WITH MEP DRAWINGS AND EXISTING CONDITIONS
- 03 PATCH AND REPAIR ALL ACCT TO MATCH EXIST. AS REQUIRED BY DEMOLITION



2 CITY CENTER, PORTLAND, ME 04101

Gensler

214 North Tryon Street
 Suite 2320
 Charlotte, NC 28202
 United States

Tel 704.377.2725
 Fax 704.377.2807

URS CORPORATION
 MEP ENGINEERS
 2777 FRANKLIN ROAD
 SUITE 2000
 SOUTHFIELD, MI 48034
 Tel 248.204.5900
 Fax 248.204.5901

MONAGHAN WOODWORKS
 100 COMMERCIAL STREET
 SUITE 212
 PORTLAND, ME 04101
 Tel 207.775.2683
 Fax 207.772.6726

GENERAL NOTES

- A. EXISTING CEILING TILE & GRID TO REMAIN OR TO MATCH EXISTING - UNO. REPAIR, CLEAN, & REWORK AS NEEDED TO CREATE A CLEAN, UNIFORM CEILING.
- B. ALL NEW CEILING TO MATCH HEIGHT OF EXISTING CEILINGS - APPROX. 8'-6" FOR FLOORS 2 AND 3. UNO.
- C. CENTER LUMINAIRES IN TILES ANIOR EVENLY SPACE IN GYPSUM BOARD CEILING, UNLESS NOTED OTHERWISE.
- D. ALL LIGHTS, SPRINKLER HEADS, SPEAKERS, EXIT SIGNS, AND OTHER CEILING-MOUNTED DEVICES IN PANEL/TILE CEILING TO BE CENTERED IN TILE IN BOTH DIRECTIONS, UNLESS NOTED OTHERWISE.
- E. DRAWINGS TO BE READ IN CONJUNCTION WITH LIGHTING FIXTURES SCHEDULE AND SPECIFICATIONS BY ELECTRICAL ENGINEER. VERIFY ALL LIGHTING TYPES AND QUANTITIES. IN CASE OF CONFLICT, NOTIFY ARCHITECT PRIOR TO PROCEEDING.
- F. VERIFY LOCATION AND SIZE OF ALL ACCESS PANELS IN GWB CEILING WITH ARCHITECT PRIOR TO INSTALLATION.
- G. REFER TO ENGINEER'S DRAWINGS FOR DIFFUSERS, EXIT SIGNS, FIRE ALARM DEVICES AND OTHER ITEMS IN THE CEILING.
- H. REFERENCE ENGINEER'S DRAWING FOR MORE INFORMATION.

Date	Description
08/08/14	ISSUED FOR CONSTRUCTION

Seal / Signature

Project Name
URS - PORTLAND

Project Number
59 6222.900

Scale
1/4" = 1'-0"

Description
REFLECTED CEILING PLAN - LEVEL 03

A03.03

