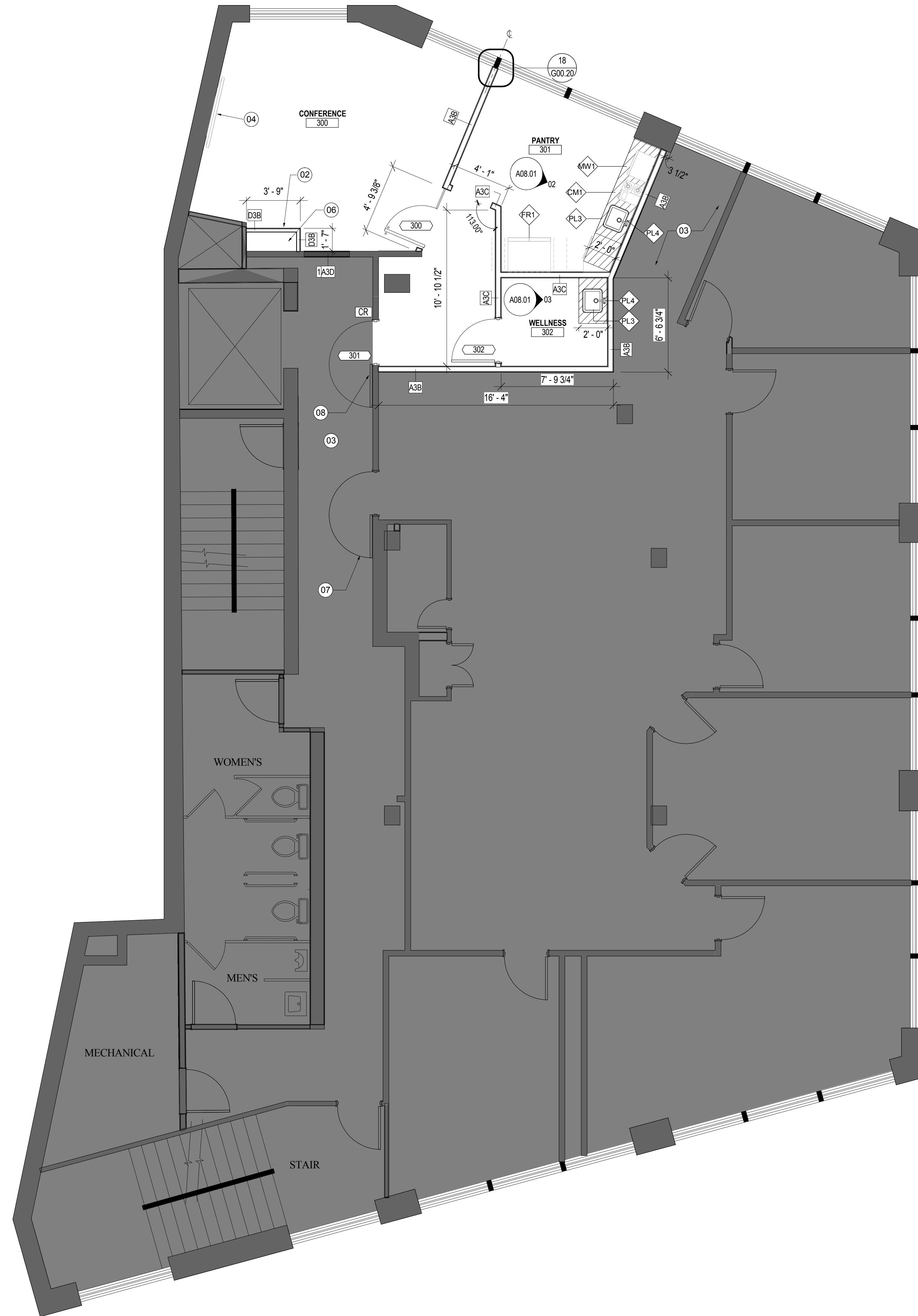


I:\gensler\project\Portland\21820\URS\Portland_CENTRAL_21820.rvt



SHEET NOTES

- 01 GC TO RETROFIT STAIR DOOR TO ACCOMMODATE CARD READER. MAINTAIN FIRE RATING. COORDINATE W/ SECURITY VENDOR. REPLACE HARDWARE FOR ADA
- 02 PROVIDE GFRG. ACCESS PANEL FOR CABLING. COORDINATE SIZE W/ IT CONSULTANT
- 03 PATCH ALL AREAS AFFECTED BY DEMOLITION TO MATCH ADJACENT SURFACES
- 04 PROVIDE BLOCKING IN WALL FOR NEW TV LOCATION. COORDINATE LOCATION W/ AV VENDOR
- 05 NEW FIRE EXTINGUISHER LOCATION
- 06 PROVIDE FIRE STOPPING AT ALL PENETRATIONS THROUGH RATED ASSEMBLIES (SLAB AND FIRE RATED CEILING) MAINTAIN EXIST. RATING
- 07 MAY NEED TO RECONFIGURE ADJACENT TENANT HARDWARE TO ALLOW 180 DOOR SWING. GC TO COORD. WITH LANDLORD/TENANT.
- 08 NEW DOOR AT THIS LOCATION TO MAINTAIN OR RESTORE EXISTING FIRE RATING OF CORRIDOR. GC TO VERIFY



2 CITY CENTER, PORTLAND, ME 04101



214 North Tryon Street
 Suite 2320
 Charlotte, NC 28202
 United States

Tel 704.377.2725
 Fax 704.377.2807

URS CORPORATION
 MEP ENGINEERS
 2777 FRANKLIN ROAD
 SUITE 2000
 SOUTHFIELD, MI 48034
 Tel 248.204.5900
 Fax 248.204.5901

MONAGHAN WOODWORKS
 100 COMMERCIAL STREET
 SUITE 212
 PORTLAND, ME 04101
 Tel 207.775.2683
 Fax 207.772.6726

GENERAL NOTES

Date	Description
08/08/14	ISSUED FOR CONSTRUCTION

- A. ALL PARTITION TYPES TO BE A2A U.O.A.
- B. REFER TO SHEET G00.20 FOR PARTITION TYPE INFORMATION
- C. GC SHALL RE-INSTATE THE INTEGRITY OF ALL RATED SYSTEMS.
- D. LOCATE DOORS WITH CLOSERS NO LESS THAN 1'-6" TO EDGE OF DOOR FROM INTERSECTING PARTITION ON PULL SIDE AND 1'-0" ON PUSH SIDE.
- E. ABANDONED POKE THROUGH TO BE FILLED IN, PATCHED AND SMOOTHED MEETING THE FLOORS REQUIRED FIRE RATING.
- F. PATCH/REPAIR GYP AT ALL AREAS AFFECTED BY DEMOLITION.
- G. ALL DIMENSIONS AND ALIGNMENTS ARE TO FACE OF FINISH, UNLESS NOTED OTHERWISE. CONTRACTOR TO COORDINATE FINISH AND APPLICATION THICKNESSES TO ACHIEVE DIMENSIONS PROVIDED.
- H. ALL DOOR FRAMES HINGE SIDE TO BE LOCATED 4" FROM ADJACENT PERPENDICULAR PARTITION UNLESS NOTED OTHERWISE.
- J. PROVIDE FIRE RETARDANT TREATED WOOD BLOCKING AS REQUIRED FOR: WALL HUNG MILLWORK AND EQUIPMENT, WALL HUNG FLAT SCREEN DISPLAYS (NOT LESS THAN 40" X 40" X 3/4" PLYWOOD), CENTERED ABOVE CREDENZAS FOR ARTWORK (4'-0" @ 6'-0" AFF), PRIVATE OFFICE FURNITURE OVERHEADS.
- K. DO NOT SCALE DRAWINGS. WRITTEN DIMENSIONS GOVERN. ALL PARTITION TYPES, LOCATION, AND DIMENSIONS, AND DOOR AND WINDOW LOCATIONS SHALL BE AS SHOWN ON ARCHITECT'S DRAWINGS. IN CASE OF CONFLICT, NOTIFY ARCHITECT PRIOR TO PARTITION INSTALLATION. ARCHITECT'S PARTITION PLAN SUPERSEDES OTHER PLANS.
- L. SEE G00.03 FOR ALL OUTLET, STROBE, SWITCH, THERMOSTAT, FIRE ALARM PULL, PLACEMENT. NOTIFY ARCHITECT IMMEDIATELY IN EVENT OF DISCREPANCY.
- M. CENTERLINE OF ALL PARTITIONS MEETING THE PERIMETER TO ALIGN WITH CENTERLINE OF MULLION U.O.N.

Seal / Signature

Project Name
 URS - PORTLAND

Project Number
 59 6222.900

Scale
 1/4" = 1'-0"

Description
 PARTITION PLAN - LEVEL 03

A02.03

