

SHEET NOTES

- 01 GC TO DEMOLISH ALL WALLS, DOORS AND FRAME SHOWN DASHED. PATCH + REPAIR ADJACENT SURFACES AS REQUIRED TO "LIKE NEW" CONDITION
- 02 REMOVE POWER/DATA OUTLETS IN WALL. PATCH AND REPAIR ALL HOLES TO RECEIVE NEW FINISH
- 03 REMOVE PORTION OF WALL AS TO ALLOW FOR NEW DOOR/FRAME. COORDINATE W/ NEW WORK. PATCH AND REPAIR EXIST WALL AS REQUIRED
- 04 RELOCATE EXIST FIRE EXTINGUISHER. PATCH AND REPAIR AS REQUIRED. COORDINATE W/ NEW WORK



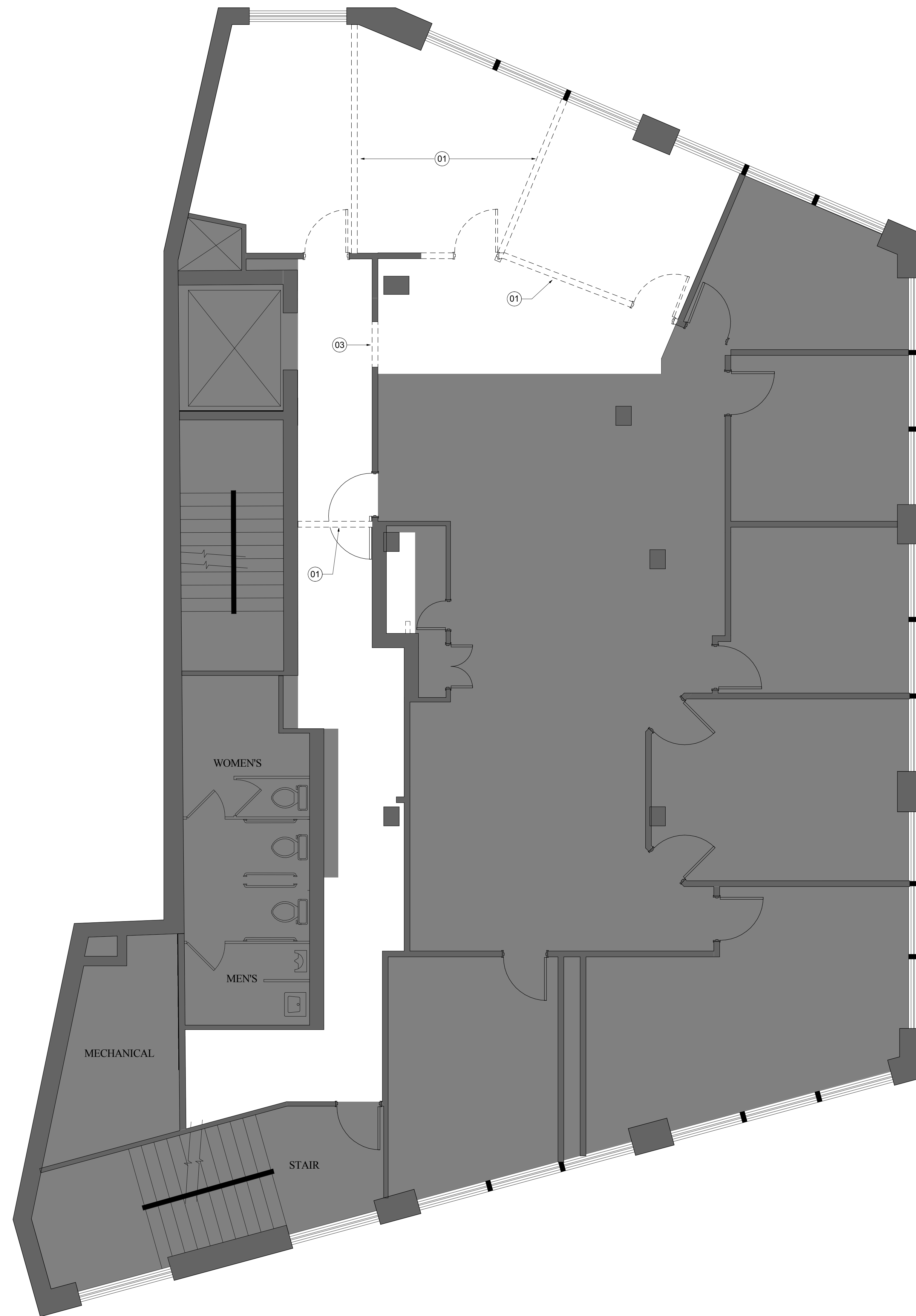
2 CITY CENTER, PORTLAND, ME 04101

Gensler

214 North Tryon Street
 Suite 2320
 Charlotte, NC 28202
 United States
 Tel 704.377.2725
 Fax 704.377.2807

URS CORPORATION
 MEP ENGINEERS
 27777 FRANKLIN ROAD
 SUITE 2000
 SOUTHFIELD, MI 48034
 Tel 248.204.5900
 Fax 248.204.5901

MONAGHAN WOODWORKS
 100 COMMERCIAL STREET
 SUITE 212
 PORTLAND, ME 04101
 Tel 207.775.2683
 Fax 207.772.6726



GENERAL NOTES

- A REFER TO G00.01, G00.02 FOR ADDITIONAL NOTES, SYMBOLS AND SCHEDULES
- B SHADED AREAS INDICATE AREAS NOT IN CONTRACT. COORDINATE WITH ENGINEERS DRAWINGS FOR FULL EXTENT OF DEMOLITION.
- C CONTRACTOR TO PROTECT EXISTING MECHANICAL UNITS TO REMAIN DURING CONSTRUCTION. COORDINATE WITH ENGINEERS DRAWINGS
- D CONTRACTOR TO SURVEY EXISTING PERIMETER AND CORE WALL SURFACES FOR AREAS OF DAMAGE OR SURFACES INCONSISTANT. PATCH AND REPAIR AREAS TO MAINTAIN INTEGRITY OF THERMAL ENVELOPE AND TO PROVIDE SMOOTH AND EVEN WALL SURFACE.
- E GC SHALL OBTAIN A COPY OF THE BUILDING MANAGEMENT'S RULES AND REGULATIONS AND COMPLY WITH THEM IN ALL MATTERS RELATED TO THE SCOPE OF THE WORK.
- J USE DESIGNATED ELEVATOR ONLY. PROVIDE PROTECTION FOR INTERIOR FINISHES DURING DEMOLITION AND CONSTRUCTION.
- K REMOVE ALL EXISTING CEILING SYSTEMS, LIGHT FIXTURES AND DEVICES AS NEEDED TO ACCOMMODATE NEW LAYOUT. UNO.
- L COMPLY WITH APPLICABLE LOCAL, STATE AND FEDERAL CODES AND REGULATIONS PERTAINING TO SAFETY OF PERSONS, PROPERTY AND ENVIRONMENTAL PROTECTION.
- M PROVIDE AND MAINTAIN BARRICADES, LIGHTING, AND GUARDRAILS AS REQUIRED BY APPLICABLE CODES AND REGULATIONS TO PROTECT OCCUPANTS OF BUILDING AND WORKERS.
- N ERECT AND MAINTAIN DUST-PROOF PARTITIONS AS REQUIRED TO PREVENT SPREAD OF DUST, FUMES, AND SMOKE, ETC. TO OTHER PARTS OF THE BUILDING. ON COMPLETION, REMOVE PARTITIONS AND REPAIR DAMAGED SURFACES TO MATCH ADJACENT SURFACES.
- P IF DEMOLITION IS PERFORMED IN EXCESS OF THAT REQUIRED, RESTORE EFFECTED AREAS AT NO COST TO THE OWNER.
- Q EXISTING SIGNAGE AND DIRECTORIES TO BE REMOVED AND STORED FOR POTENTIAL REUSE.
- R ALL WIRING TO EXISTING PANELS OR REUSED WITH THE APPROVAL OF THE ELECTRICAL ENGINEER.
- S ABANDONED TEL/DATA LINES TO BE REMOVED, INCLUDING WIRING, ABANDONED ELECTRICAL, TELEPHONE, AND DATA CABLING AND DEVICES, UNO.
- T RELOCATE EXISTING FIRE EXTINGUISHER.

Date	Description
08/08/14	ISSUED FOR CONSTRUCTION

Seal / Signature

Project Name
 URS - PORTLAND

Project Number
 59 6222.900

Scale
 As indicated

Description
 DEMOLITION PLAN - LEVEL 03

A01.03

- AREA NOT IN CONTRACT
- EXISTING PARTITION TO DEMOLISH
- EXISTING PARTITION TO REMAIN

