

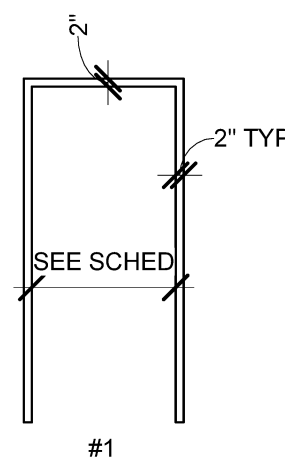
Mark	DOOR SCHEDULE										Fire Rating	Comments	
	Door					Frame							
	Width	Height	Thickness	Door Material	Door Type	Glass	Frame Material	Frame Type	Head	Jamb			Sill
A001	3' - 0"	6' - 8"	1 3/4"	WD	F	-	WD	1	D5	D6			SOLID CORE WOOD DOOR. STAINED.
A002	2' - 0"	6' - 0"	1 3/4"	ST	F	-							INSULATED STEEL DOOR. GASKETED @ WALK IN.
A101	4' - 10"	6' - 10"	1 3/4"	WD	EXG	-							EXISTING DOUBLE DOOR. STRIP AND REFINISH.
A101A	3' - 0"	6' - 8"	1 3/4"	WD	F	-	WD	1	D5	D6			SOLID CORE WOOD DOOR. STAINED.
A104	2' - 0"	6' - 8"	1 3/4"	ST	F	-							INSULATED STEEL DOOR. GASKETED @ WALK IN.
A105	3' - 0"	6' - 8"	1 3/4"	WD	B	-							BARN DOOR. SEE DETAIL C6/A10.3
A201	4' - 10"	6' - 10"	1 3/4"	WD	EXG	-							EXISTING DOUBLE DOOR. STRIP AND REFINISH.
A204	3' - 0"	6' - 8"	1 3/4"	WD	B	-							BARN DOOR. SEE DETAIL C6/A10.3

DOOR NOTES:

- SEE SPECIFICATIONS FOR HARDWARE SET DESCRIPTIONS.
- SEE TITLE SHEET A00.1 FOR STANDARD ABBREVIATIONS.
- ALL SWINGING DOORS TO BE 1-3/4" THICK (U.N.O.).
- ALL DOORS SHALL BE 3/4" UNDERCUT (TYPICAL) EXCEPT WHEN THERE IS A BOTTOM FRAME OR SILL THRESHOLD OR SPECIFICALLY NOTED OTHERWISE.
- ALL DOORS WITH BOTTOM FRAMES OR SILL THRESHOLDS SHALL HAVE MANUFACTURERS RECOMMENDED STANDARD UNDERCUT.
- REFER TO C1/A10.3 FOR FRAME TYPES.
- REFER TO C2/A10.3 FOR DOOR TYPES.

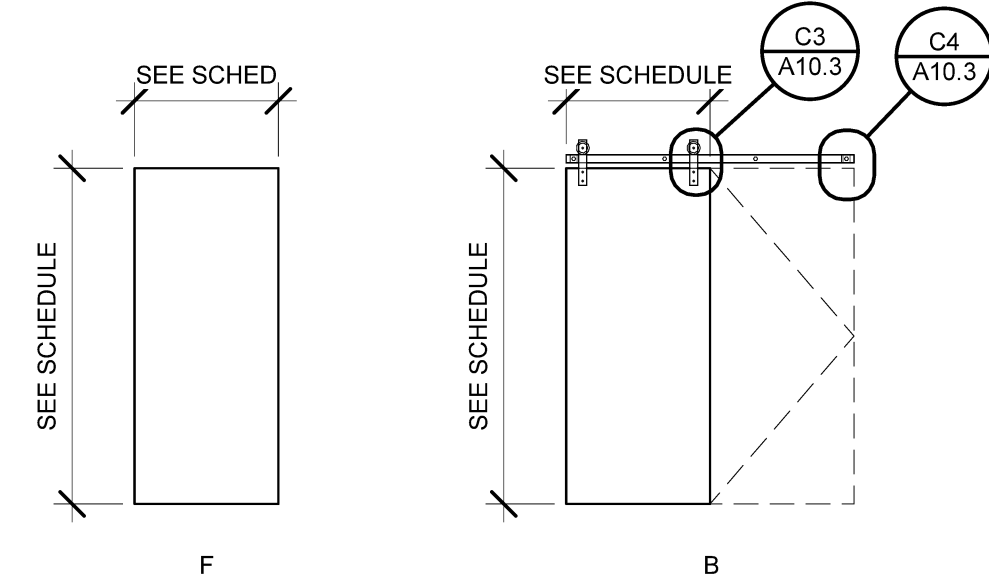
DOOR ABBREVIATIONS:

- | | |
|------|--------------------|
| AL | ALUMINUM |
| GL | GLASS |
| HM | HOLLOW METAL |
| INS | INSULATED |
| S/S | STAINLESS STEEL |
| STL | STEEL |
| TEMP | TEMPERED GLASS |
| WD | WOOD DOOR OR FRAME |
| OBS | OBSCURE GLASS |
| ETR | EXISTING TO REMAIN |
| MANU | MANUFACTURER |

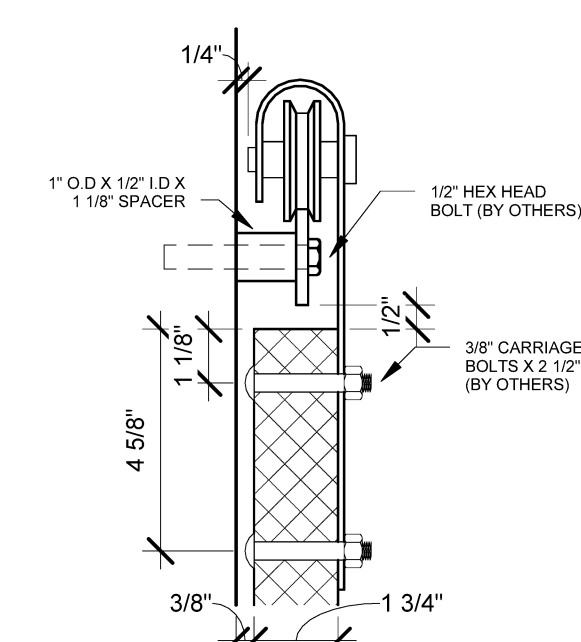


- GENERAL NOTES:**
- ALL HM FRAMES SHALL BE 2" UNLESS NOTED OTHERWISE.
 - ALL FRAMES TO BE PAINTED.

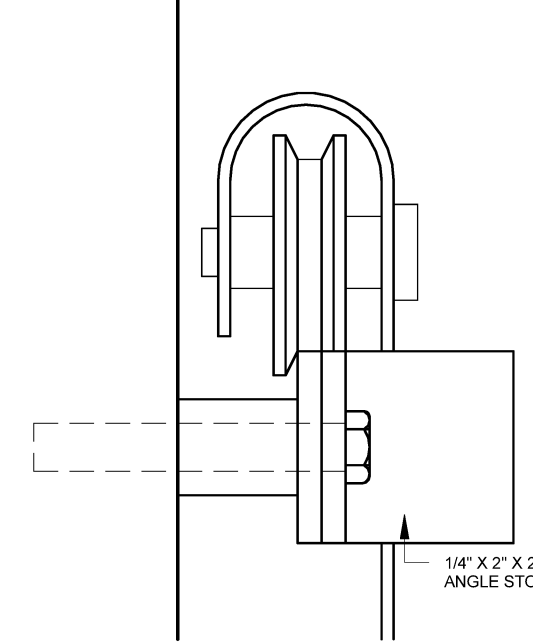
C1 DOOR FRAME TYPES
SCALE: 1/4" = 1'-0"



C2 DOOR TYPES
SCALE: 1/4" = 1'-0"

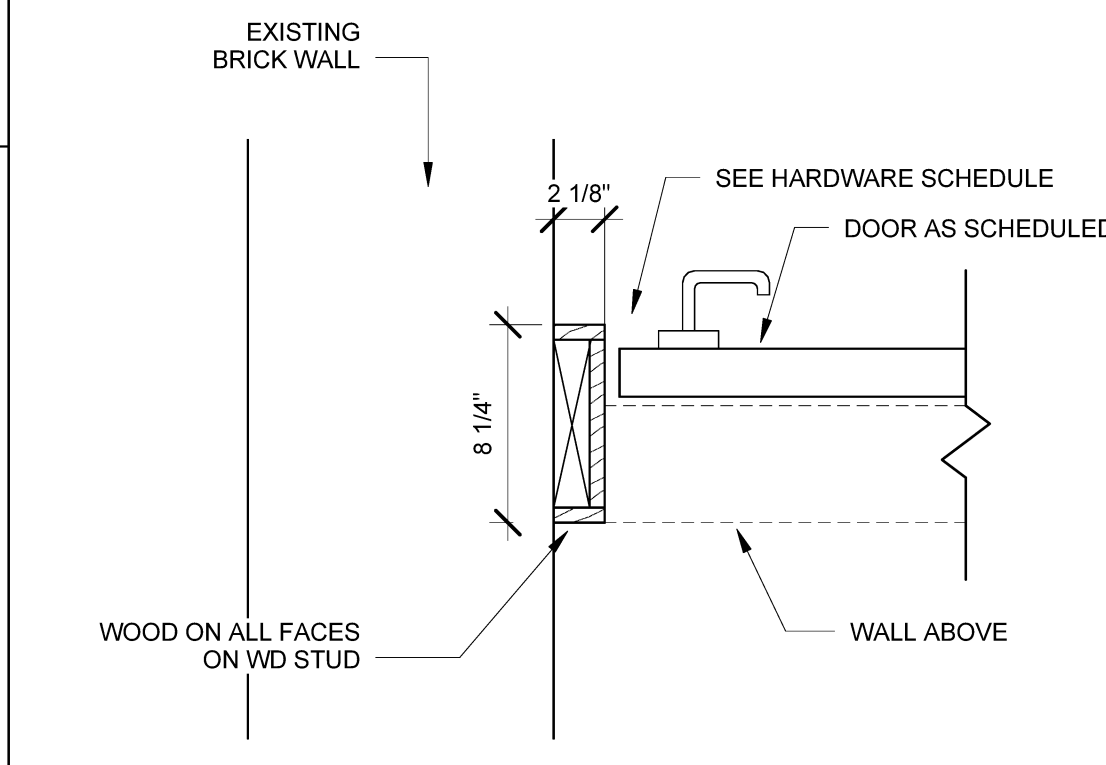


C3 DETAIL
SCALE: 3" = 1'-0"



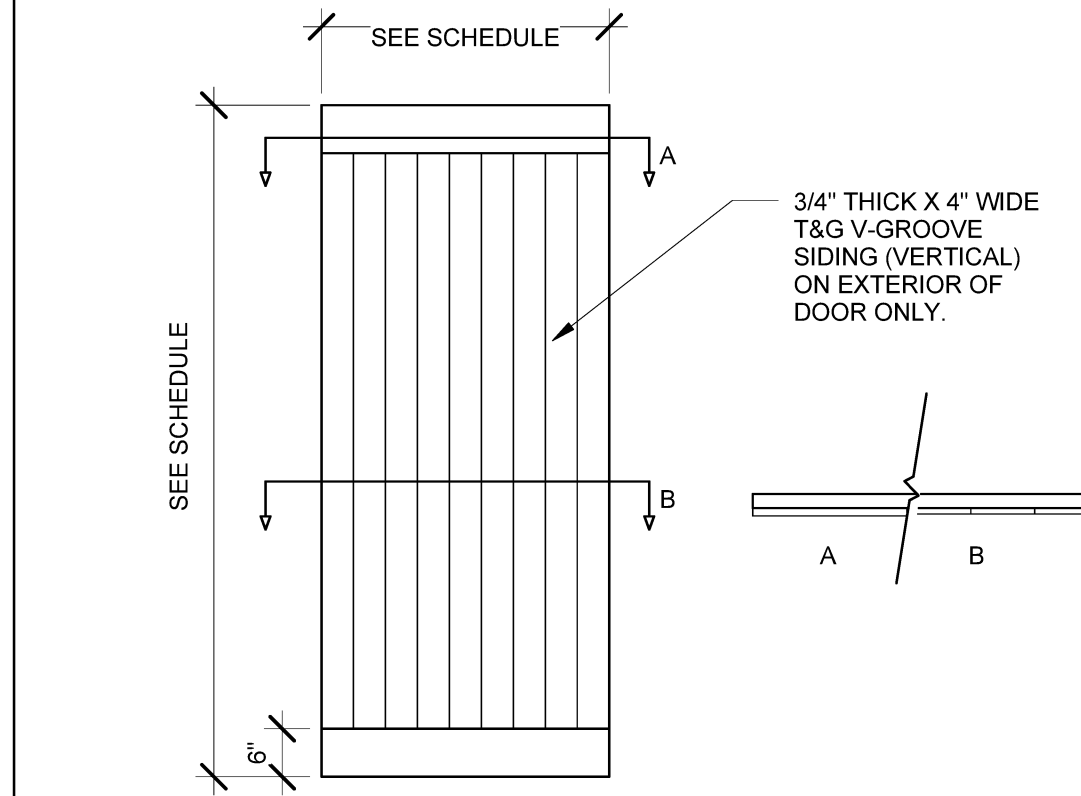
C4 DETAIL
SCALE: 6" = 1'-0"

D5 TYP STUD HEAD DETAIL
SCALE: 1 1/2" = 1'-0"

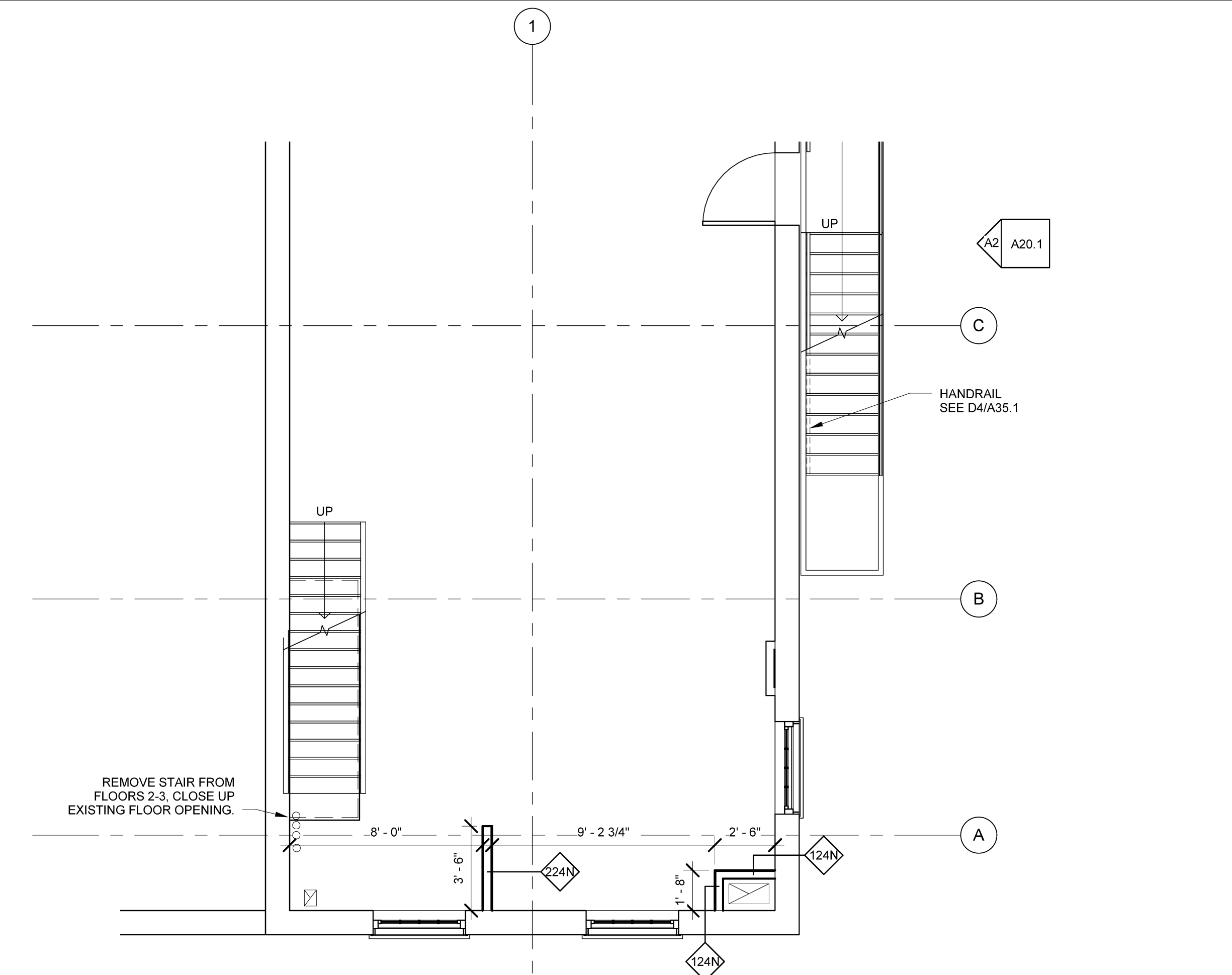


C5 BARN DOOR DETAIL
SCALE: 1 1/2" = 1'-0"

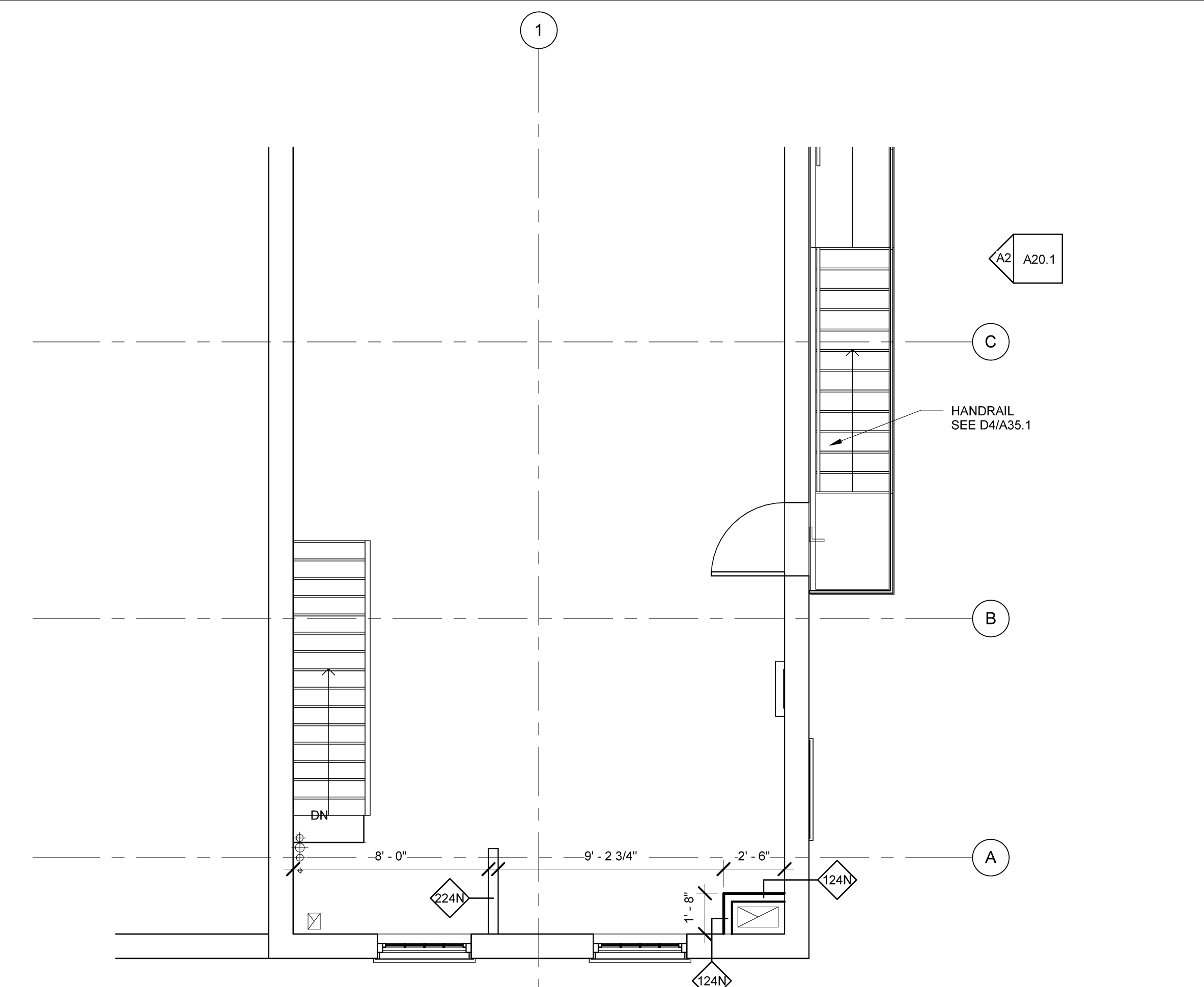
D6 TYP STUD JAMB DETAIL
SCALE: 1 1/2" = 1'-0"



C6 BARN DOOR DETAIL
SCALE: 1/2" = 1'-0"



A1 PARTIAL THIRD FLOOR PLAN
SCALE: 1/4" = 1'-0"



A4 PARTIAL FOURTH FLOOR PLAN
SCALE: 1/4" = 1'-0"

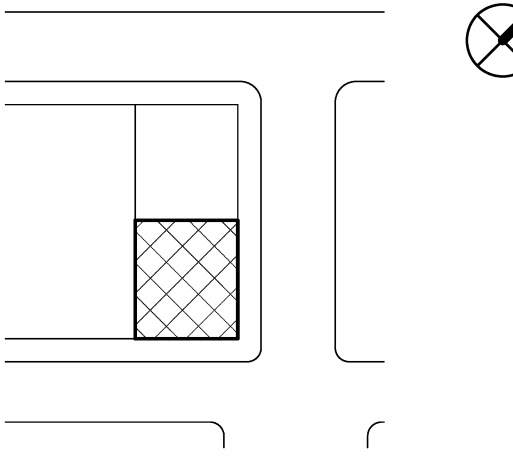


GOULD RESTAURANT

414 FORE STREET
PORTLAND, ME 04101

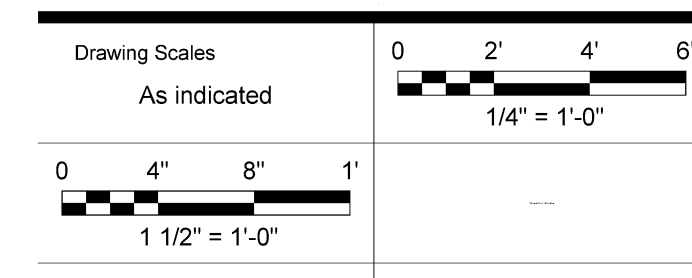
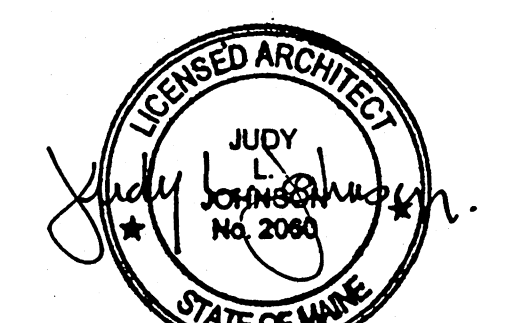
Harriman Project No. 12752

Key Plan Proj North



Issues and Revisions

Mark	Date	Description
05-21-13	75% REVIEW	
05-31-13	ISSUED FOR CONSTRUCTION	



PA / PE: RBB © 2013
 Drawn By: CMP Harriman Associates

FLOOR PLANS, DOOR SCHEDULE AND DETAILS

A10.3

Plot Date: 5/31/2013 2:53:16 PM