

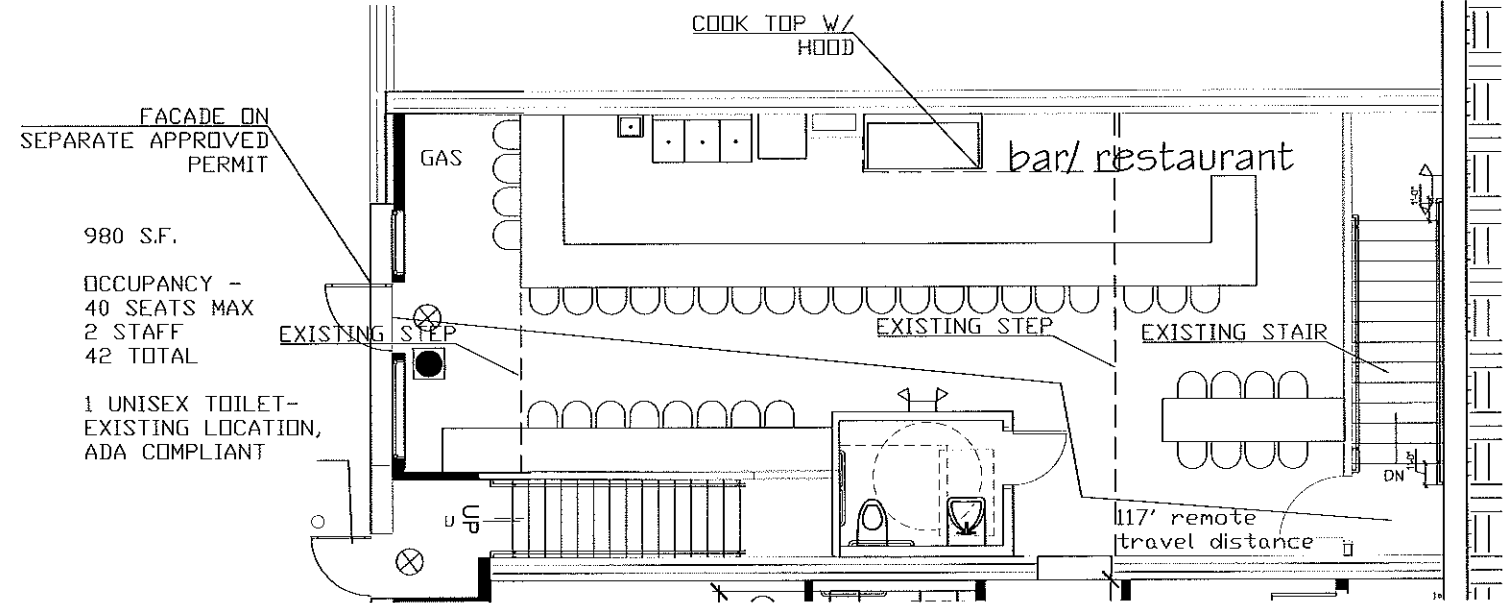
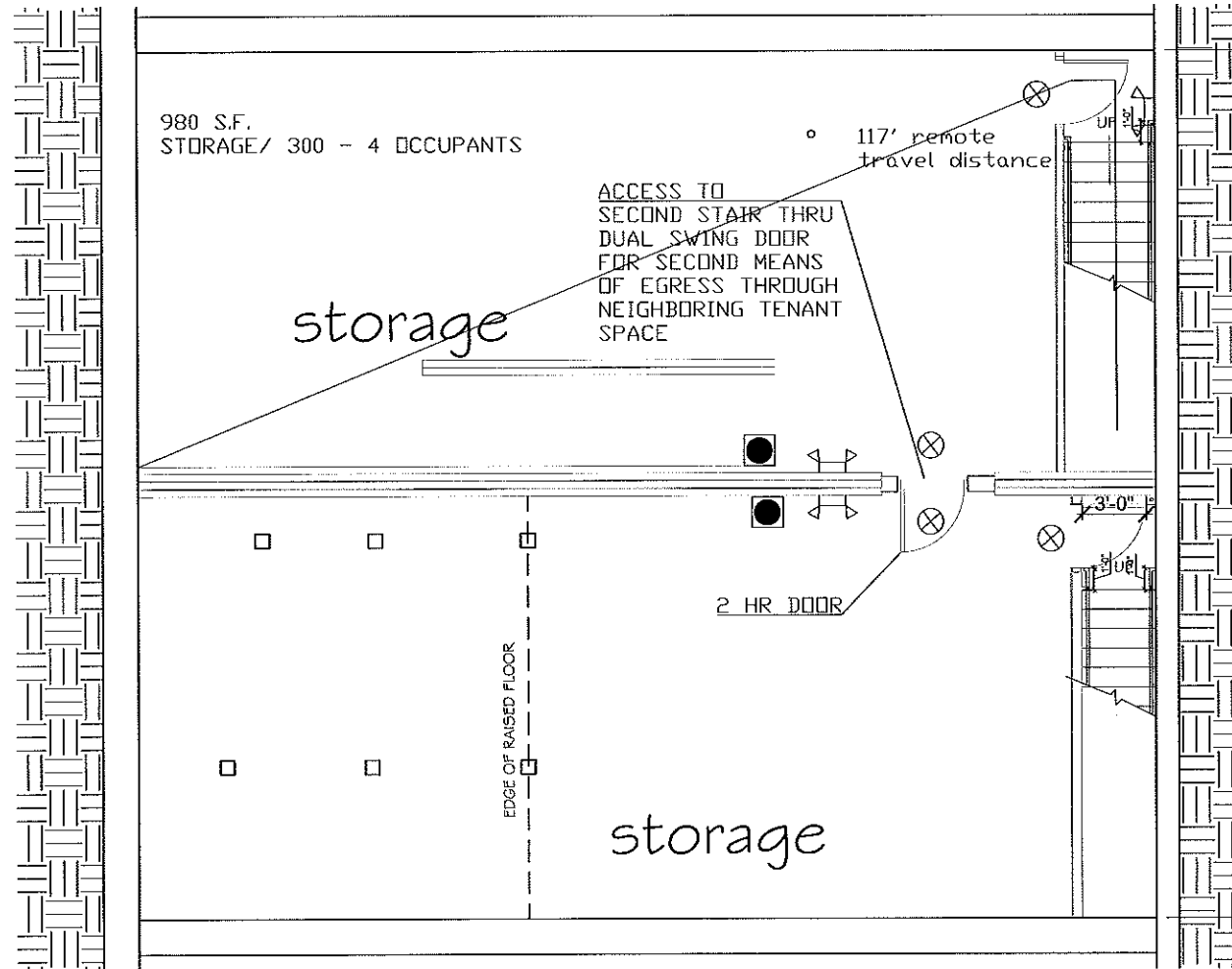


CODE ANALYSIS
 Uses: A-2,(Assembly)
 Construction Type 3B
 Building to sprinklered per NFPA13
 Note: This is not a change of use

Relevant codes
 NFPA 101 2009

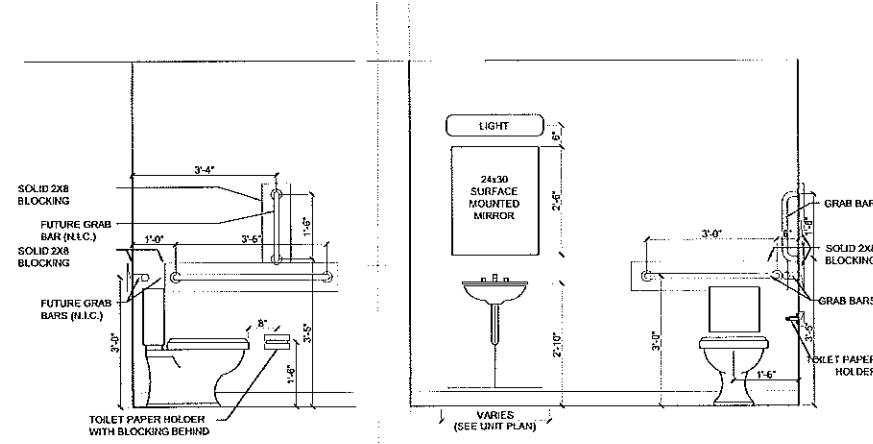
Analysis for Exist. Assembly Use
 2nd fl use permitted if sprinklered &<300 occup. T13.1.6
 Multiple occupancies per 6.1.14 13.1.2.1
 Stairs comply w/7.2.2 13.2.2.3.1
 2 exits per 7.4 except at wharf street 13.2.4
 where< 50 occupants
 Multi occupancies may be served by 13.3.4.1.2
 common alarm system 13.3.4.2.1
 Alarm initiated by sprinkler 13.3.2.2
 Cooking equip. protected per NFPA96 13.3.3.2
 Class A finishes in stairway

Stairs- See existing stair dimensions on plan 7.2.2
 max riser height =8"
 Min tread depth=9"

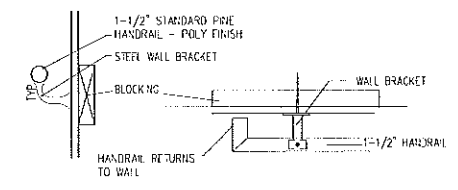


1 BASEMENT PLAN
 A1.03 1/4" = 1' 0"

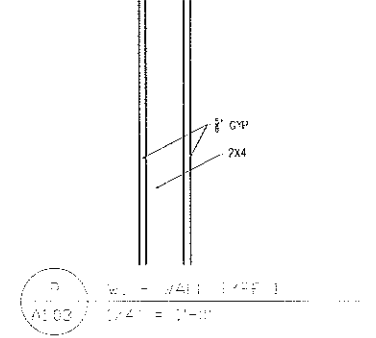
2 WHARF STREET PLAN
 A1.03 1/4" = 1' 0"



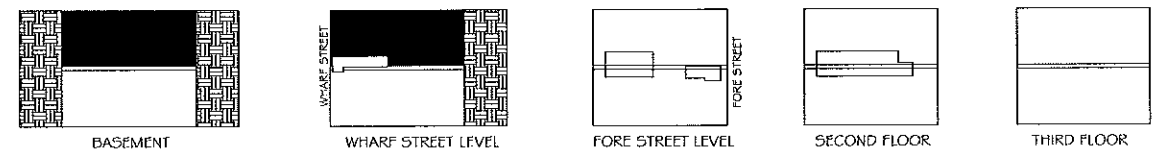
3 ADA BATHROOM REQUIREMENTS
 A1.03 1/2" = 1' 0"



4 HANDRAIL DETAILS
 A1.03 1/4" = 1'-0"



5 WALL BLOCKING
 A1.03 1/4" = 1'-0"



REFERENCE KEY PLAN

Prepared For:

Consultant:

ARCHETYPE
 48 Union Wharf Portland, Maine 04101
 (207) 772-5022 Fax (207) 772-4056

Project: 416,418, 420 FORE STREET PHASE 4
 424 FORE STREET PORTLAND, ME

Revisions:
 7-1-2015 Revision to Submission Set

Date: 6-22-2015
 Scale: As indicated

MASH TURN
 PLANS & DETAILS

A1.04