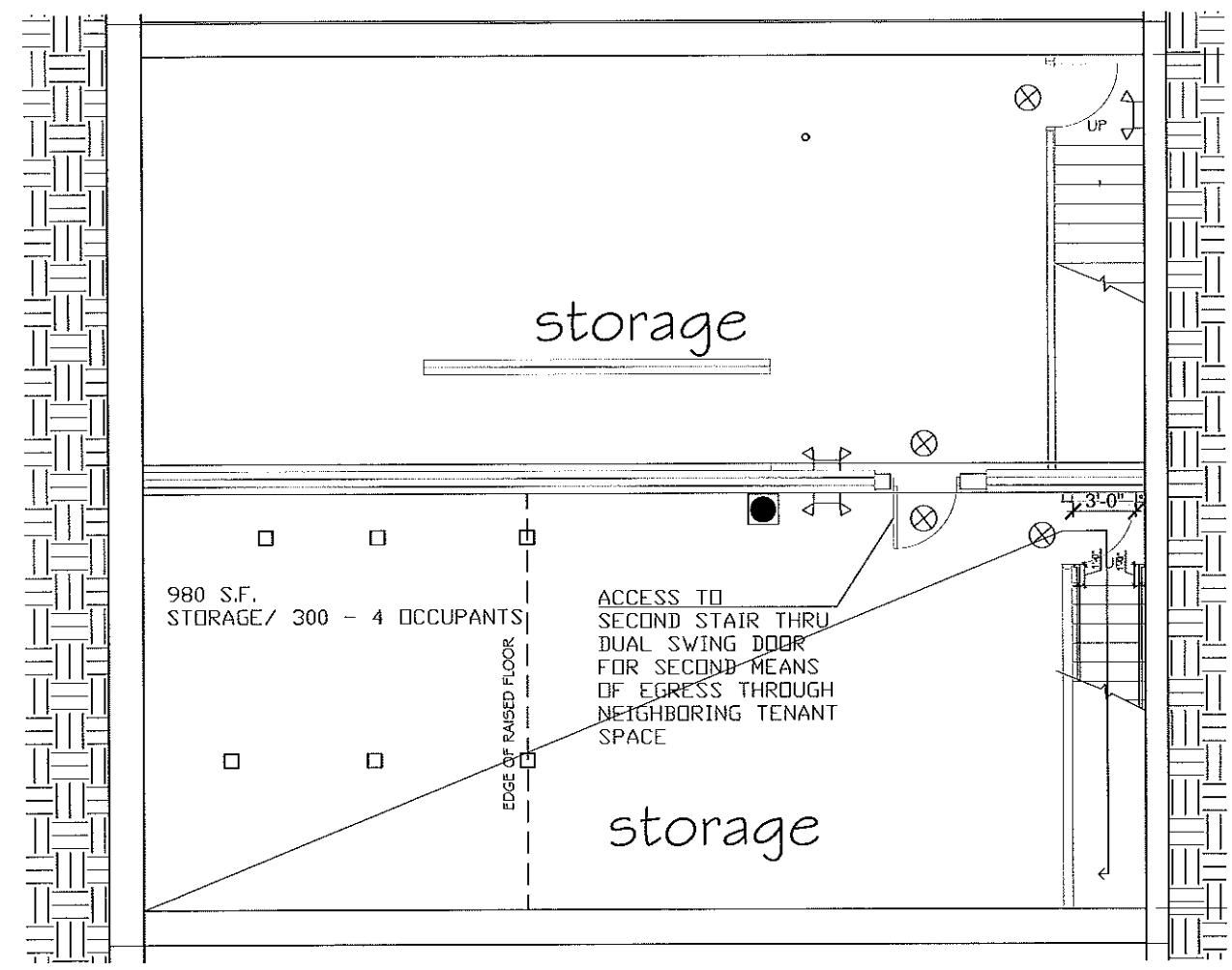


CODE ANALYSIS
 M, (Mercantile) Construction Type 3B
 Building to sprinklered per NFPA13

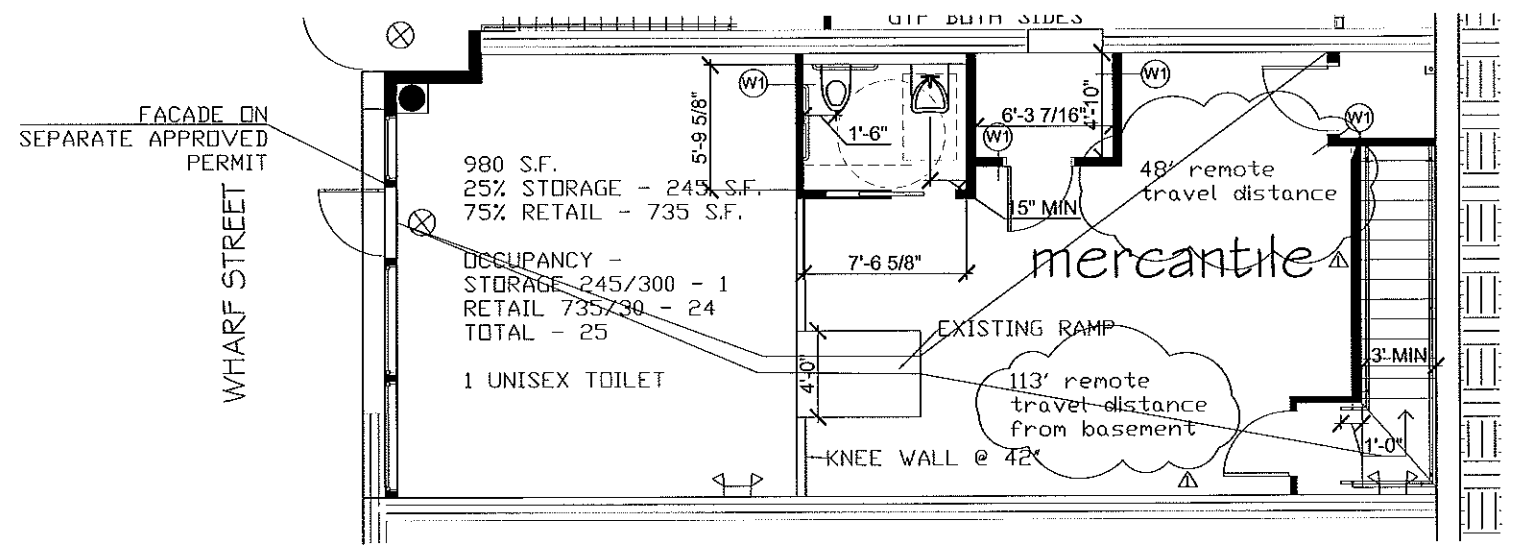
Relevant codes
 NFPA 101 2009

Analysis for Exist. M use, Class C
 Exit door may swing in, in class C
 Single exit if travel distance <75'
 Exit lighting per 7.5
 Class C finish permitted thru out
 Alarm initiation by sprinkler + 1 manual fire alarm
 Fire extinguishers required

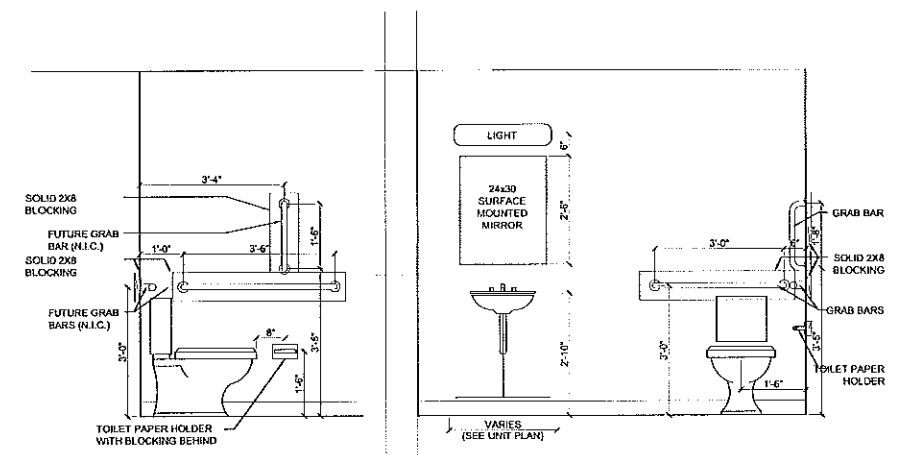
37.2.2.2.10
 37.2.4.3
 37.2.8
 37.3.3.3.2.(2)
 37.3.4.3(3)
 NFPA 101 36.3.5.3, 9.7.4.1



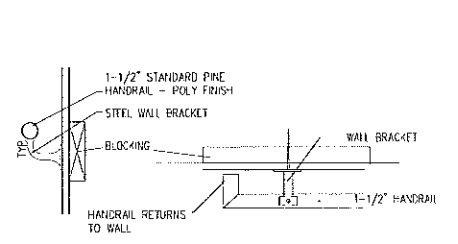
1 BASEMENT PLAN
 A1.03 1/4" = 1'-0"



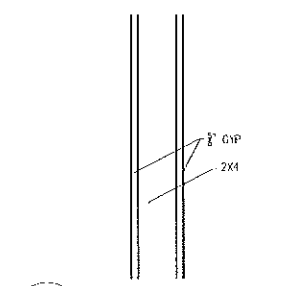
2 WHARF STREET PLAN
 A1.03 1/4" = 1'-0"



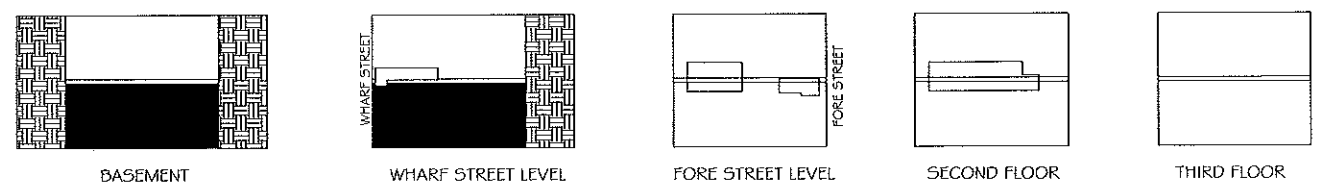
3 ADA BATHROOM REQUIREMENTS
 A1.03 1/2" = 1'-0"



4 HANDRAIL DETAILS
 A1.03 1/4" = 1'-0"



5 W1 - WALL TYPE 1
 A1.03 1/4" = 1'-0"



BUILDING FLOOR PLAN

Prepared For:

Consultant:

ARCHETYPE
 48 Union Wharf Portland, Maine 04101
 (207) 772-6022 Fax (207) 772-4056

Project: 416,418, 420 FORE STREET PHASE 3
 424 FORE STREET PORTLAND, ME

Revisions:
 7/12/2015 Revision to Submission Set
 7/31/2015 Revision based on Portland Fire comments

Scale: As indicated
 Date: 6-19-2015
 STYLE ME
 PLANS & DETAILS

A1.03