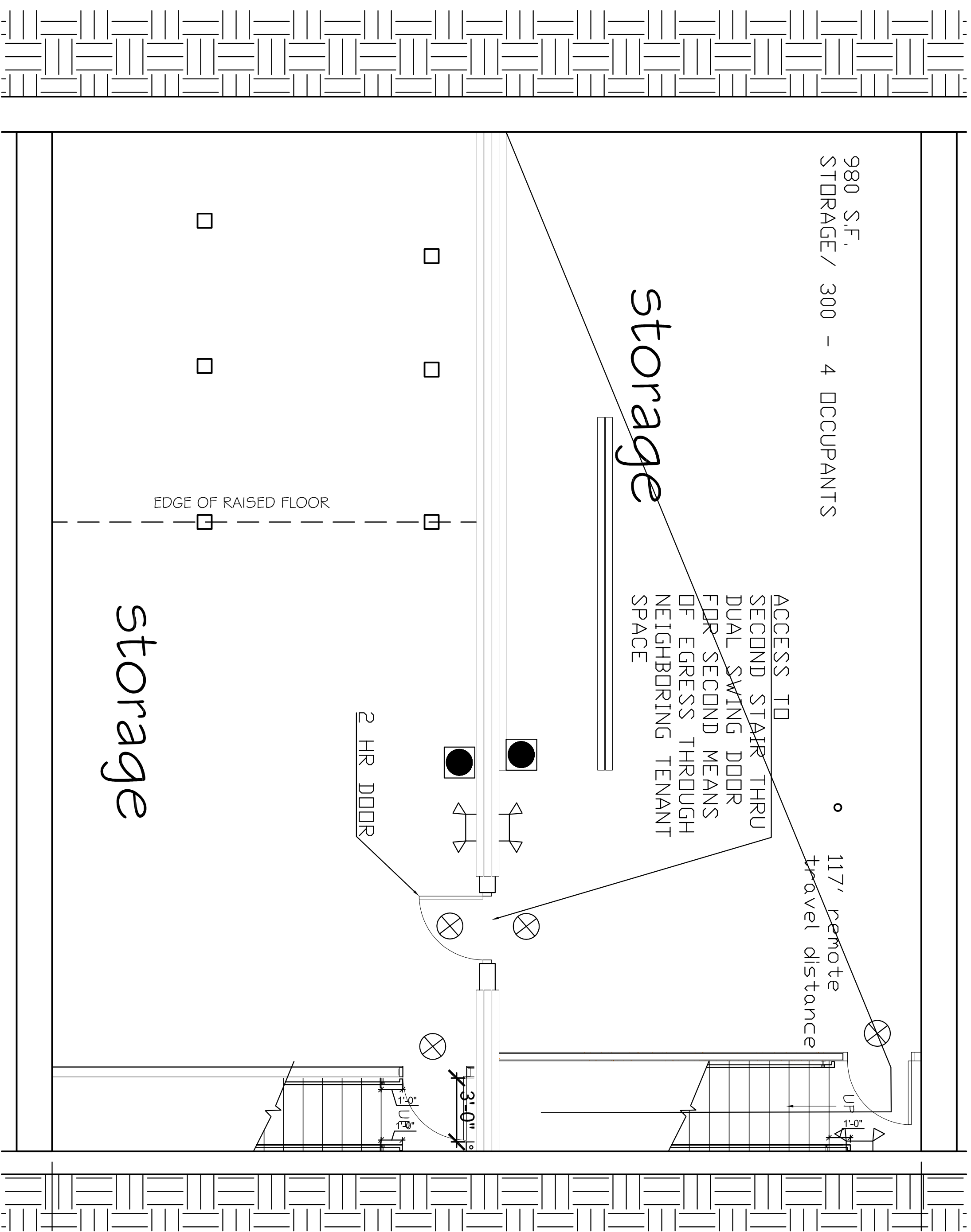


CODE ANALYSIS
 Uses: A-2, (Assembly)
 Construction Type 3B
 Building to sprinklered per NFPA13
 Note: This is not a change of use

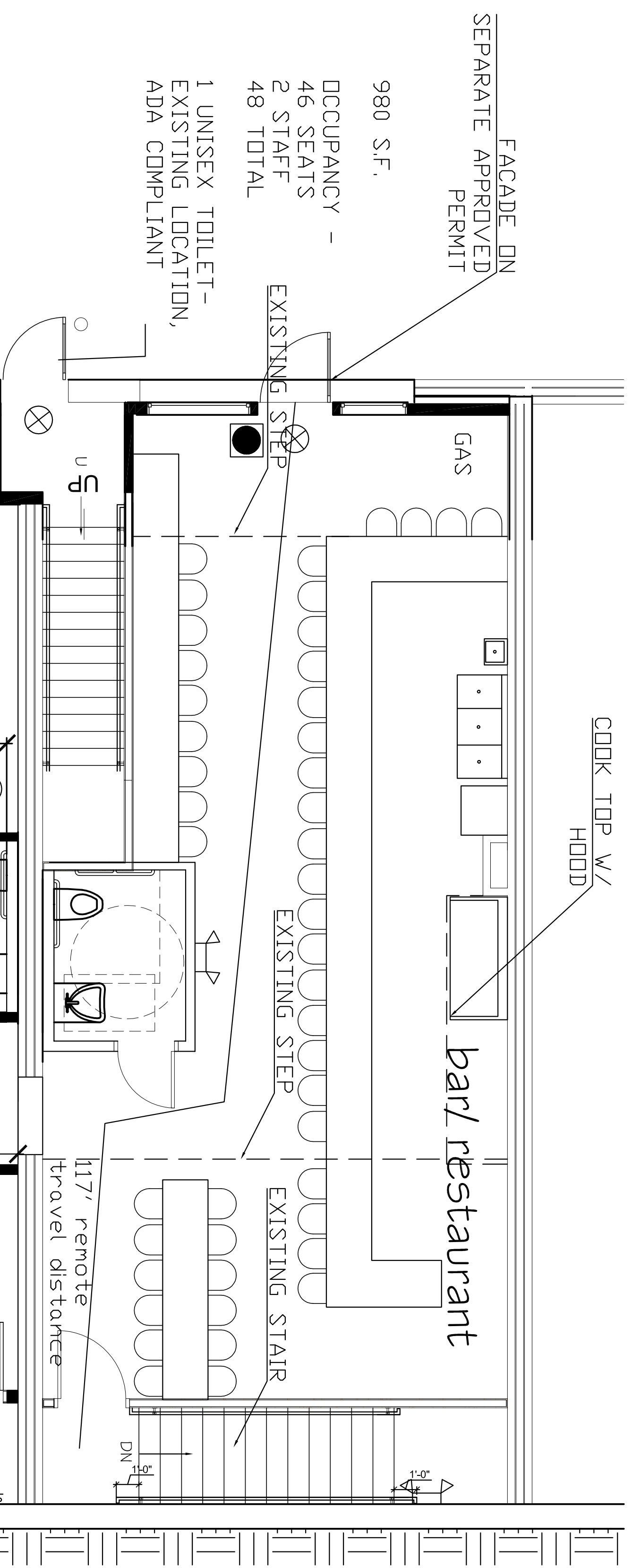
Relevant codes
 NFPA 101 2009

Analysis for Exist. Assembly Use	
2nd fl use permitted if sprinklered & <300 occup.	113.16
Multiple occupancies per 6.1.14	13.1.2.1
Stairs comply w/7.2.2	13.2.2.3.1
2 exits per 7.4 except at wharf street	
wherek 50 occupants	13.2.4
Multi occupancies may be served by	
common alarm system	13.3.4.1.2
Alarm initiated by sprinkler	13.3.4.2.1
Cooking equip. protected per NFPA96	13.3.2.2
Class A finishes in stairway	13.3.3.2

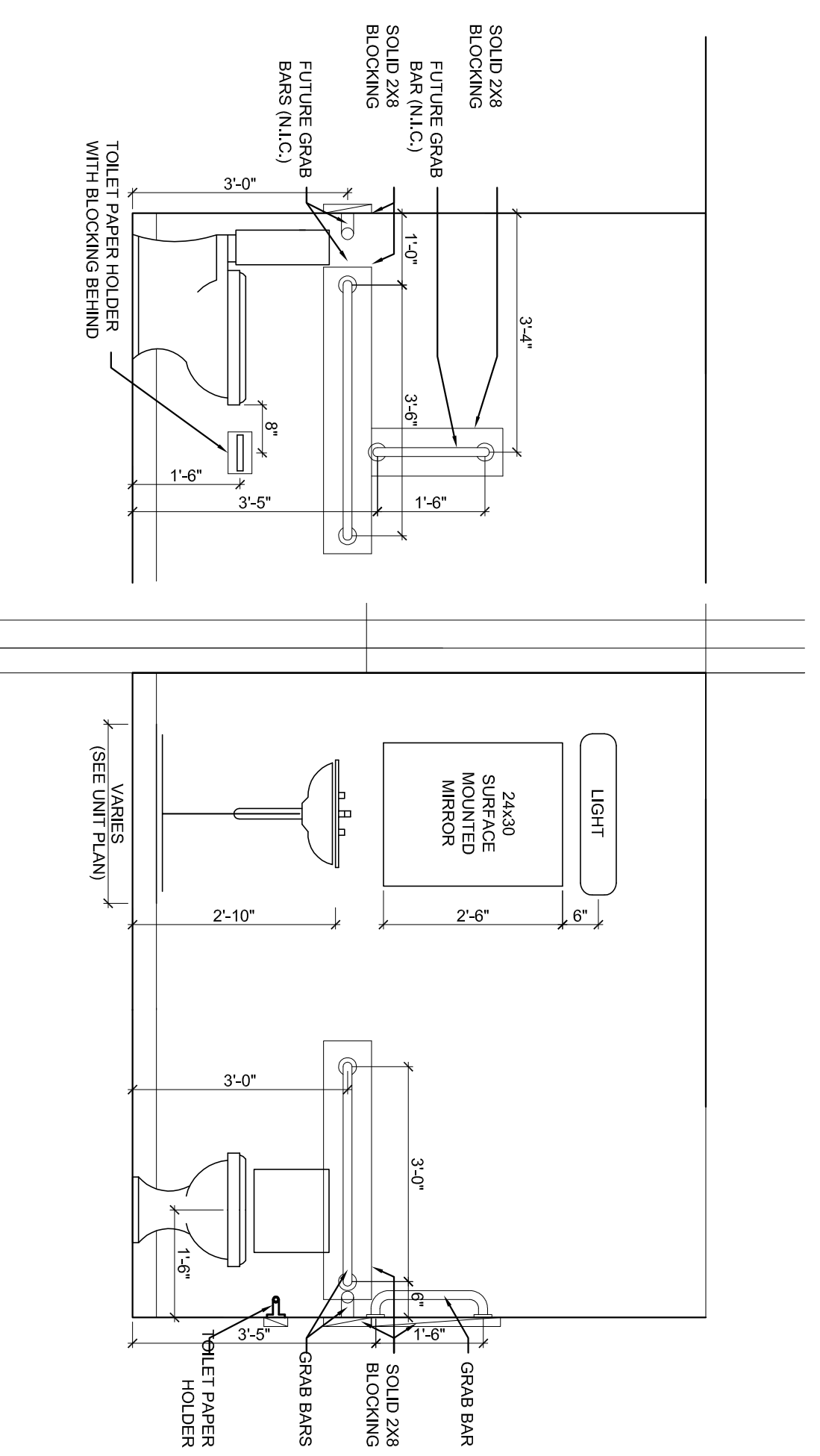
Stairs- See existing stair dimensions on plan
 max riser height =8"
 Min tread depth=9"



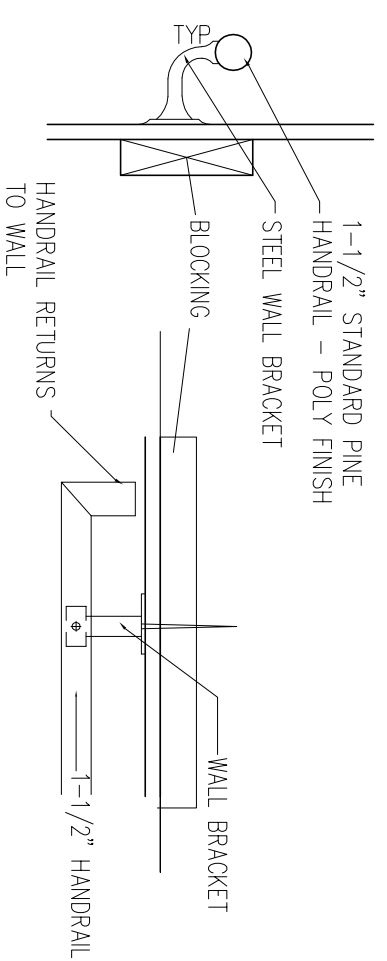
1 BASEMENT PLAN
 1/4" = 1'-0"



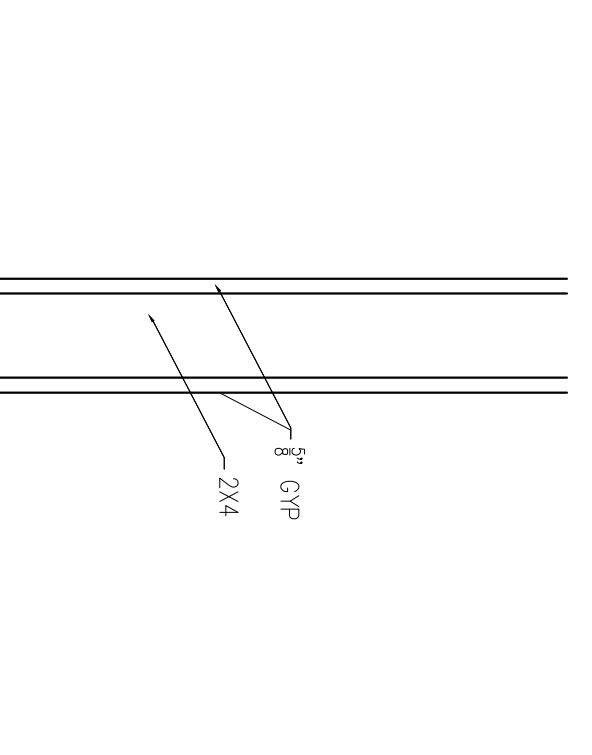
2 WHARF STREET PLAN
 1/4" = 1'-0"



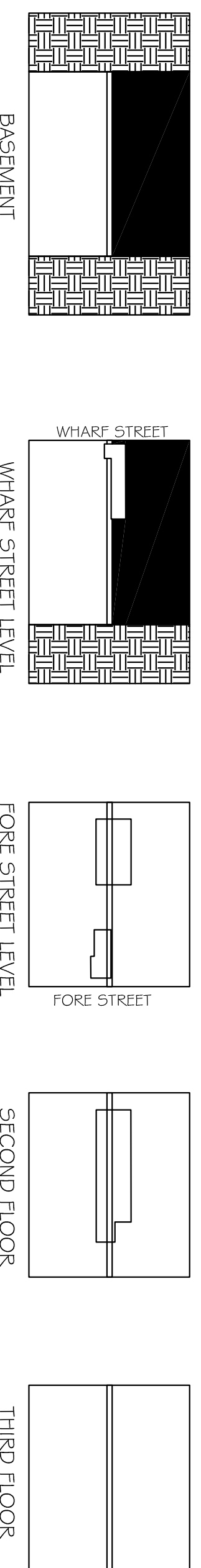
3 ADA BATHROOM REQUIREMENTS
 1/2" = 1'-0"



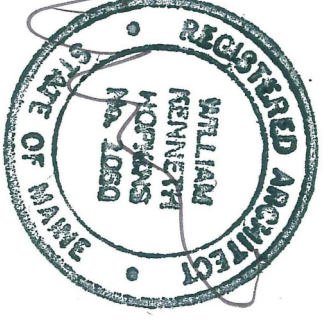
4 HANDRAIL DETAILS
 1/4" = 1'-0"



5 W1 - WALL TYPE 1
 1/4" = 1'-0"



RULED DRAWING KEY PLAN



Prepared For:

Consultant:

ARCHETYPE
 48 Union Wharf Portland, Maine 04101
 (207) 772-6022 Fax (207) 772-4056

Project:
 416,418, 420 FORE STREET PHASE 4
 424 FORE STREET PORTLAND, ME

Revisions:
 7-1-2015 Revision to Submission Set

Scale:
 As indicated

Date:
 6-22-2015

MASH TURN PLANS & DETAILS

A1.04