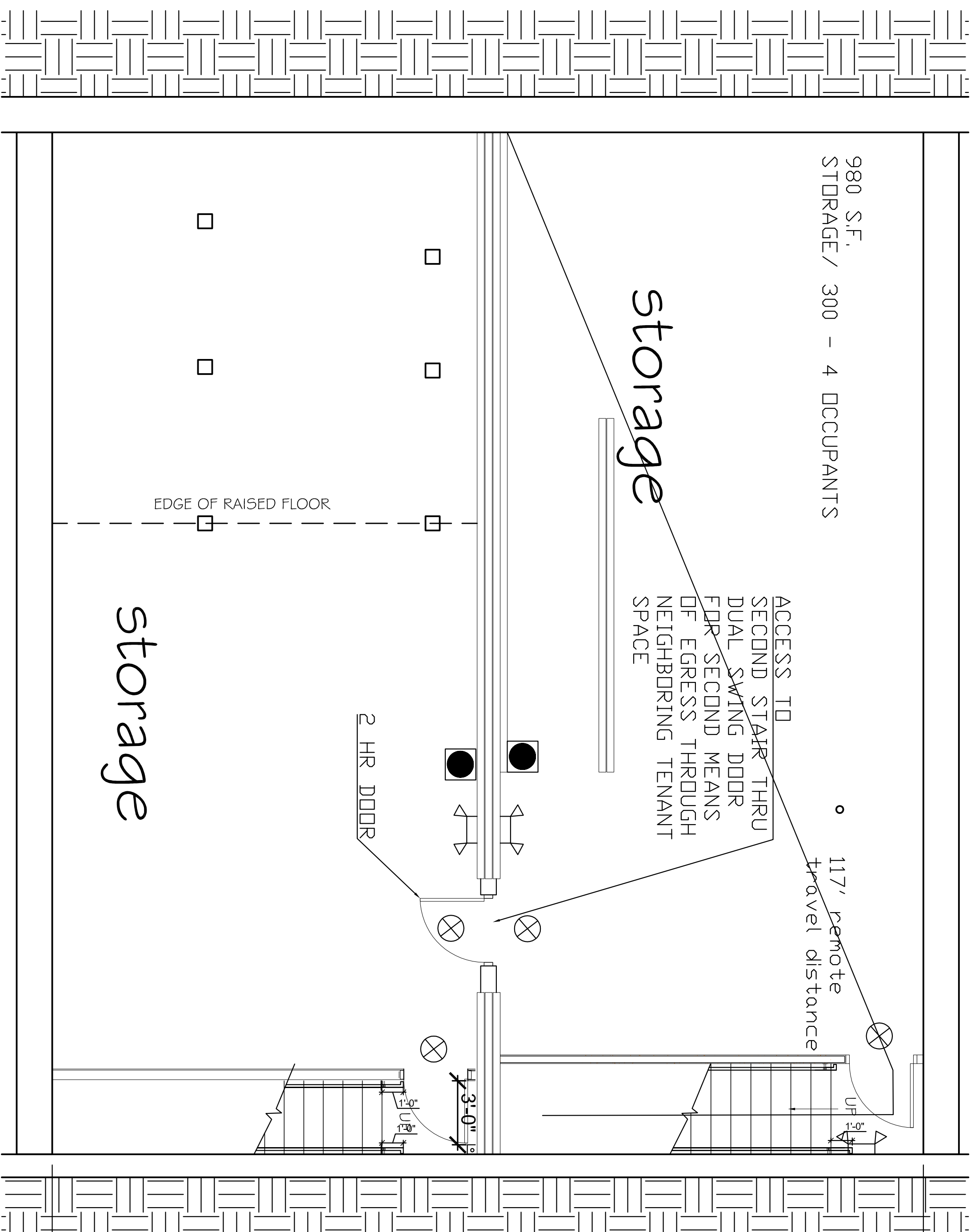


CODE ANALYSIS
 Uses: A-2,(Assembly)
 Construction Type 3B
 Building to sprinklered per NFPA13
 Note: This is not a change of use

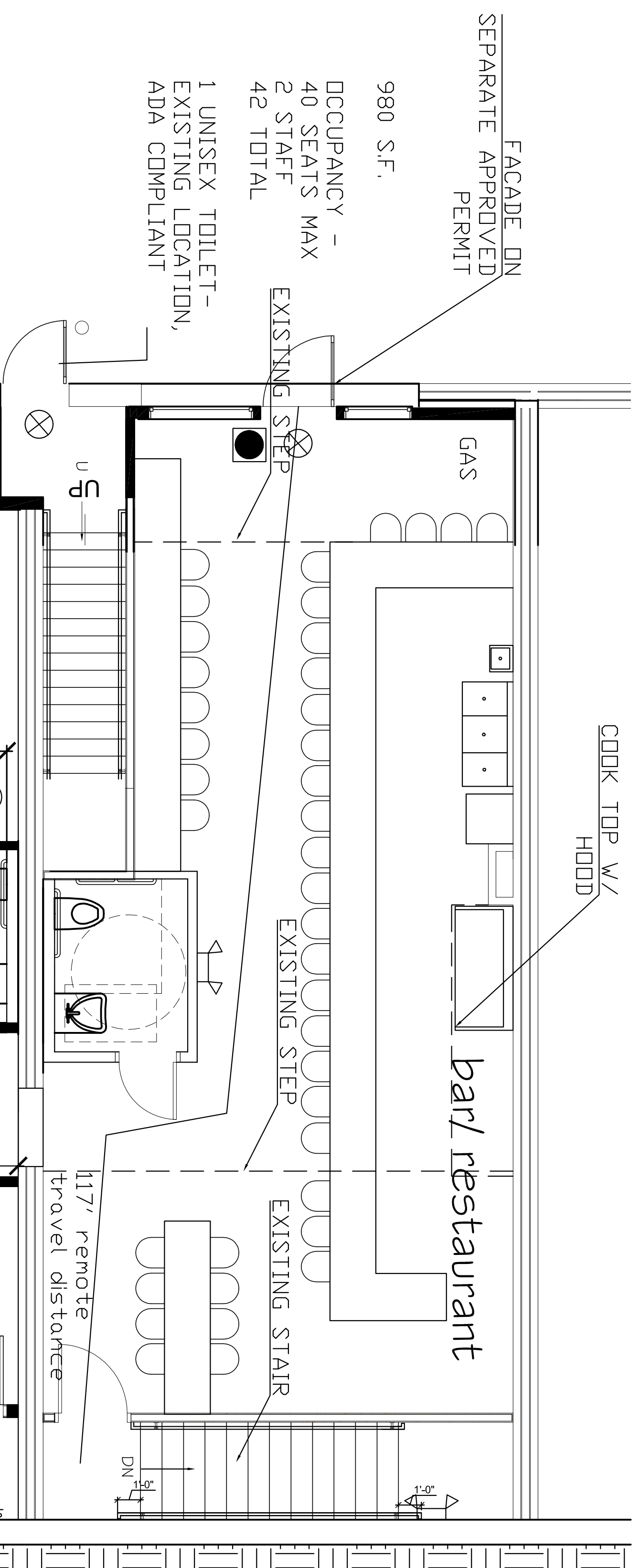
Relevant codes
 NFPA 101 2009

Analysis for Exist. Assembly Use
 2nd fl use permitted if sprinklered &<300 occup.
 Multiple occupancies per 6.1.14
 Stairs comply w/7.2.2
 2 exits per 7.4 except at wharf street
 wherek 50 occupants
 Multi occupancies may be served by
 common alarm system
 Alarm initiated by sprinkler
 Cooking equip. protected per NFPA96
 Class A finishes in stairway

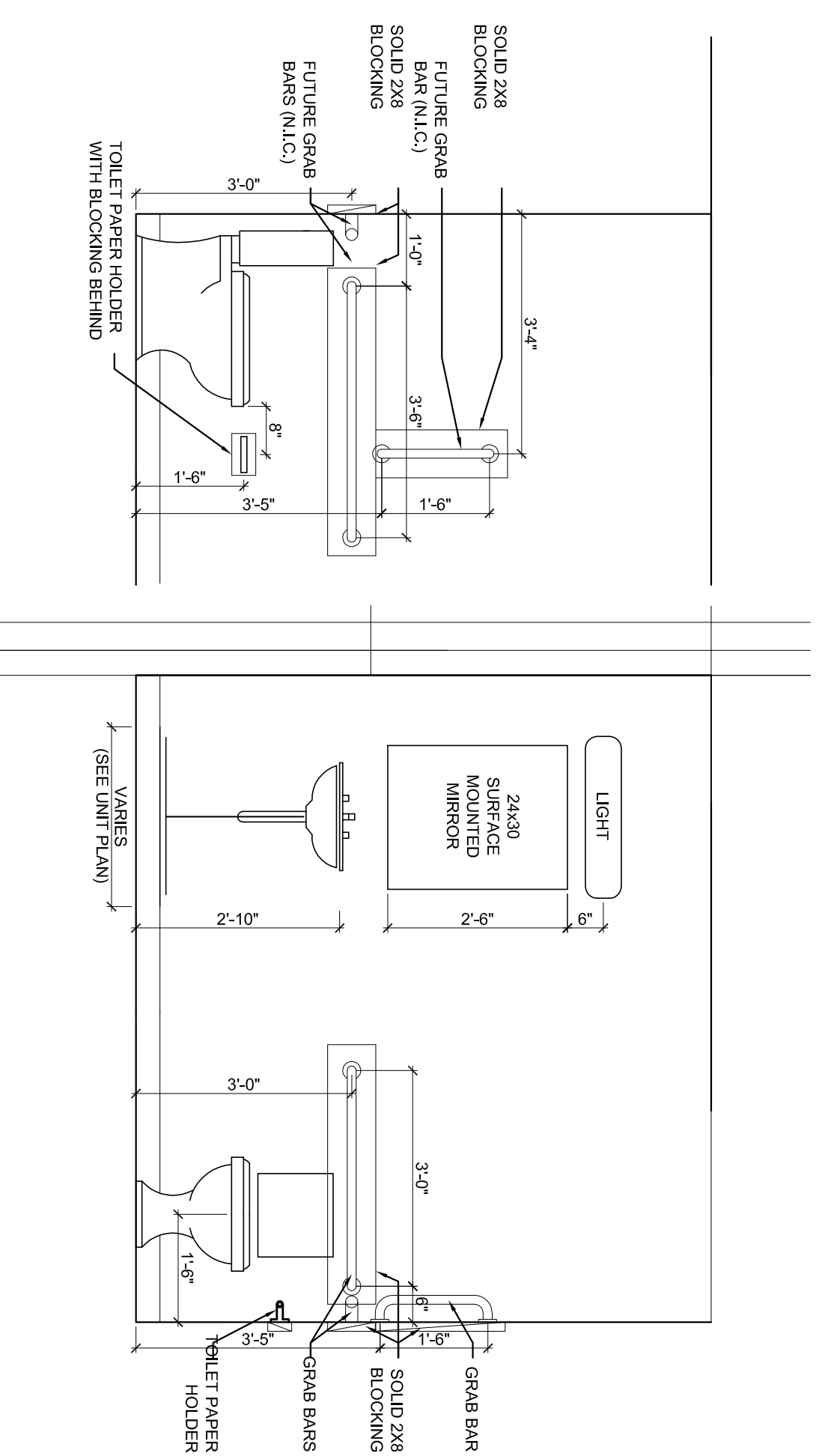
Stairs- See existing stair dimensions on plan
 max riser height =8"
 Min tread depth=9"



1 BASEMENT PLAN
 1/4" = 1'-0"

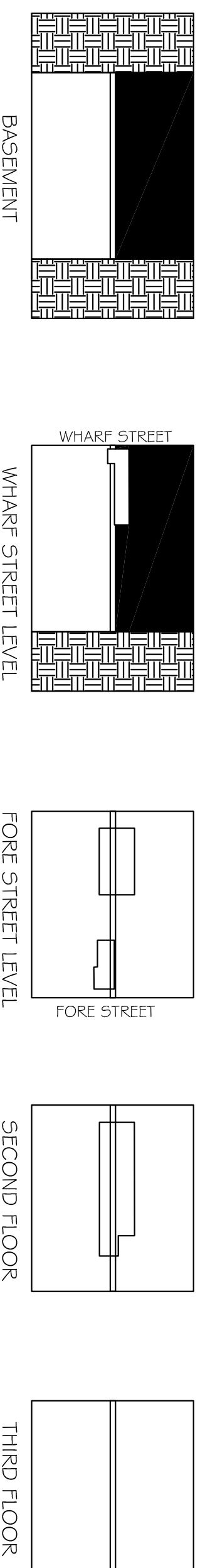
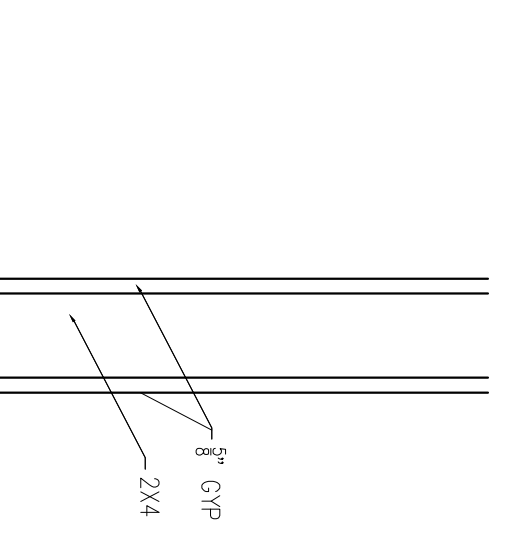
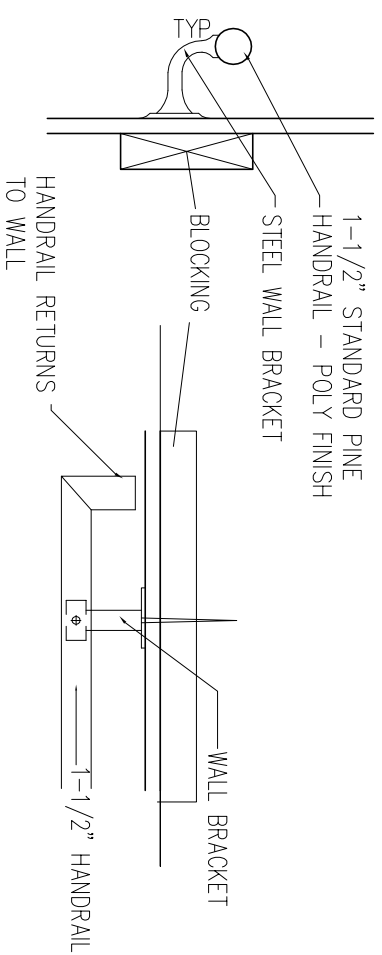


2 WHARF STREET PLAN
 1/4" = 1'-0"

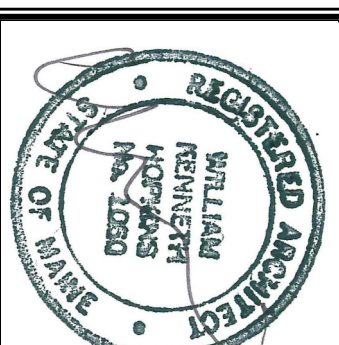


4 HANDRAIL DETAILS
 1/4" = 1'-0"

5 W1 - WALL TYPE 1
 1/4" = 1'-0"



RULED DRAWING KEY PLAN



Prepared For:

Consultant:

Architect:

Project:

Scale:

Date:

Revisions:
 7-1-2015 Revision to Submission Set

416,418, 420 FORE STREET PHASE 4

ARCHETYPE

48 Union Wharf Portland, Maine 04101
 (207) 772-6022 Fax (207) 772-4056

424 FORE STREET PORTLAND, ME

MASH TURN PLANS & DETAILS

A1.04