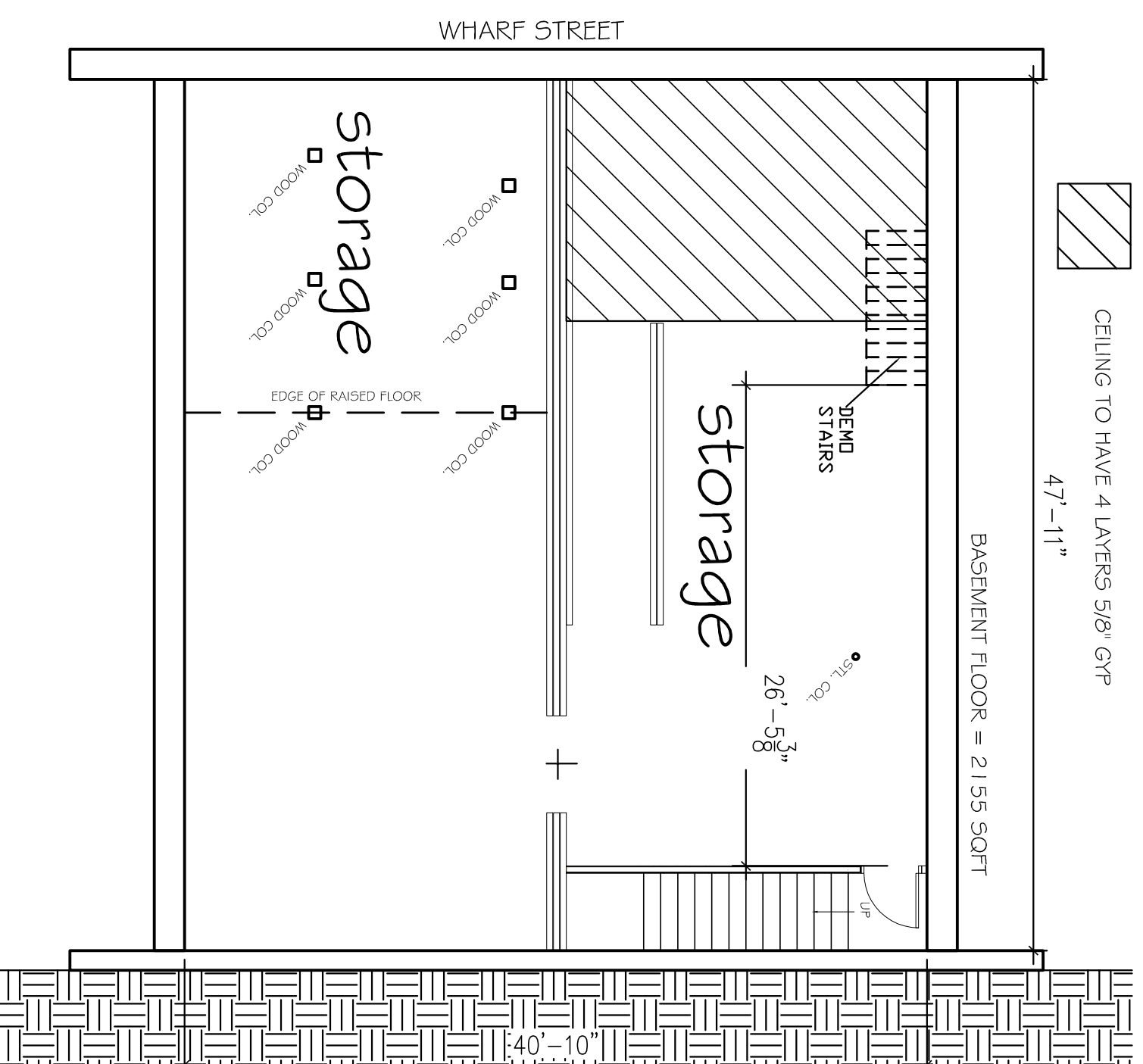
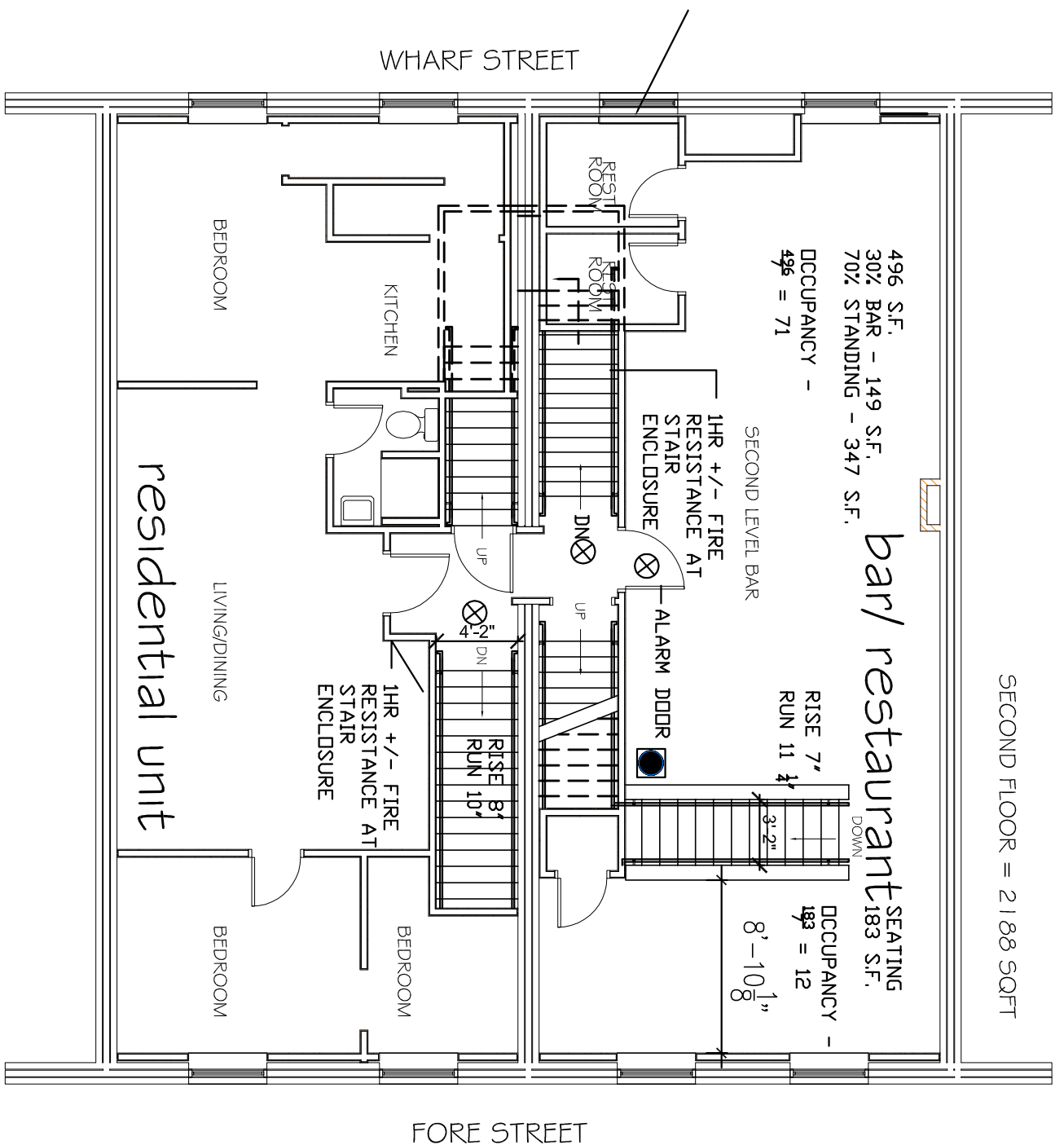


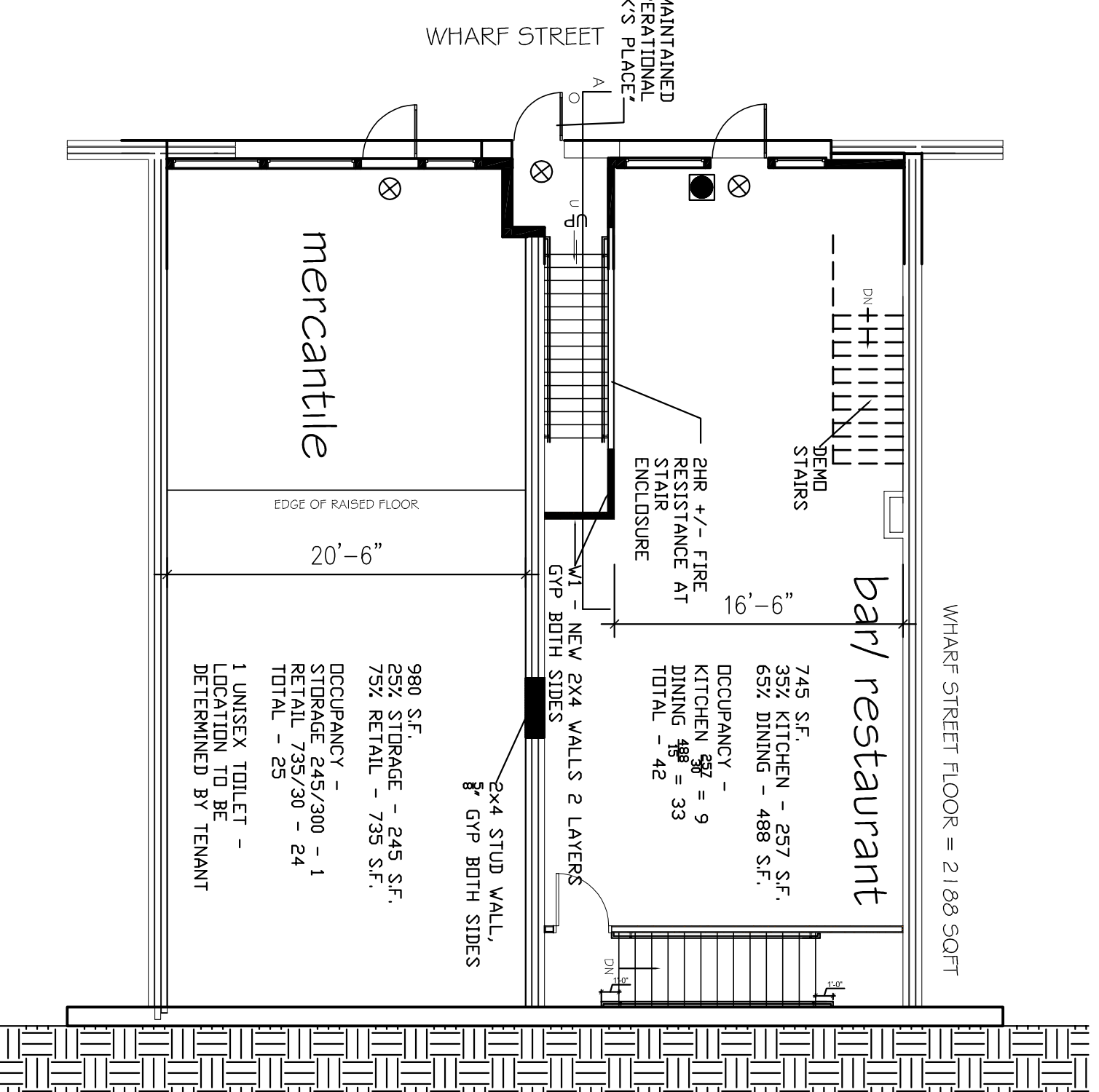
- NOTES:
1. CLOSERS ON ALL ENTRANCE DOORS TO RESIDENTIAL UNITS
  2. HANDRAILS ON BOTH SIDES OF ALL STAIRS
  3. REPAIR GYP ON ALL COMMON STAIRWAYS
  4. ALL STAIR DOORS MUST HAVE FIRE LABEL OR BE REPLACED
  5. ALL COMMON DOORS TO BE REPLACED AND BE 1 HR RATED
  6. ALL GYP BOARD REPAIR DONE IN STAIR SHAFTS TO HAVE 2 LAYERS 5/8" UNLESS OTHERWISE NOTED.



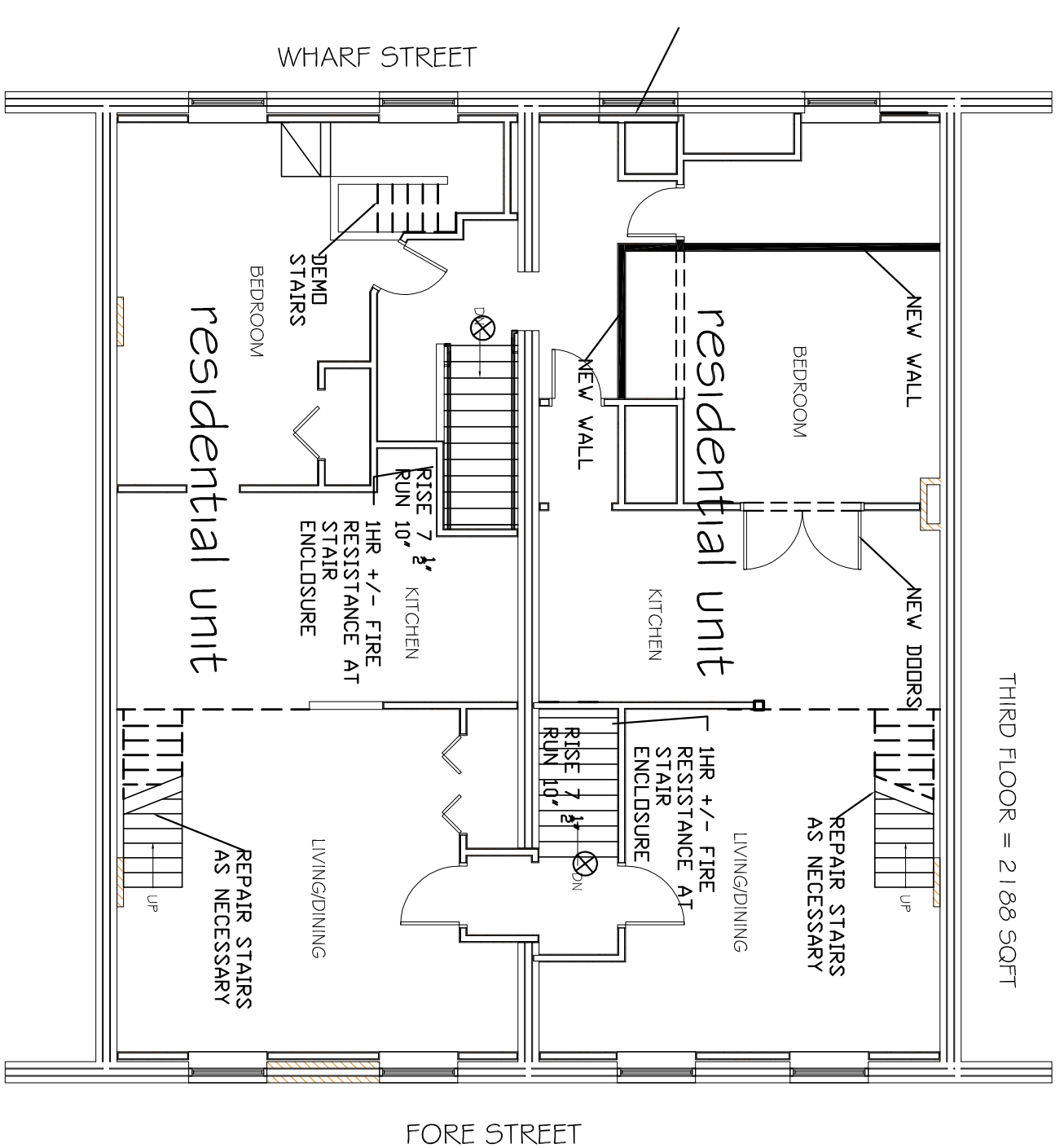
1 BASEMENT FLOOR PLAN  
A1.01 1/8" = 1'-0"



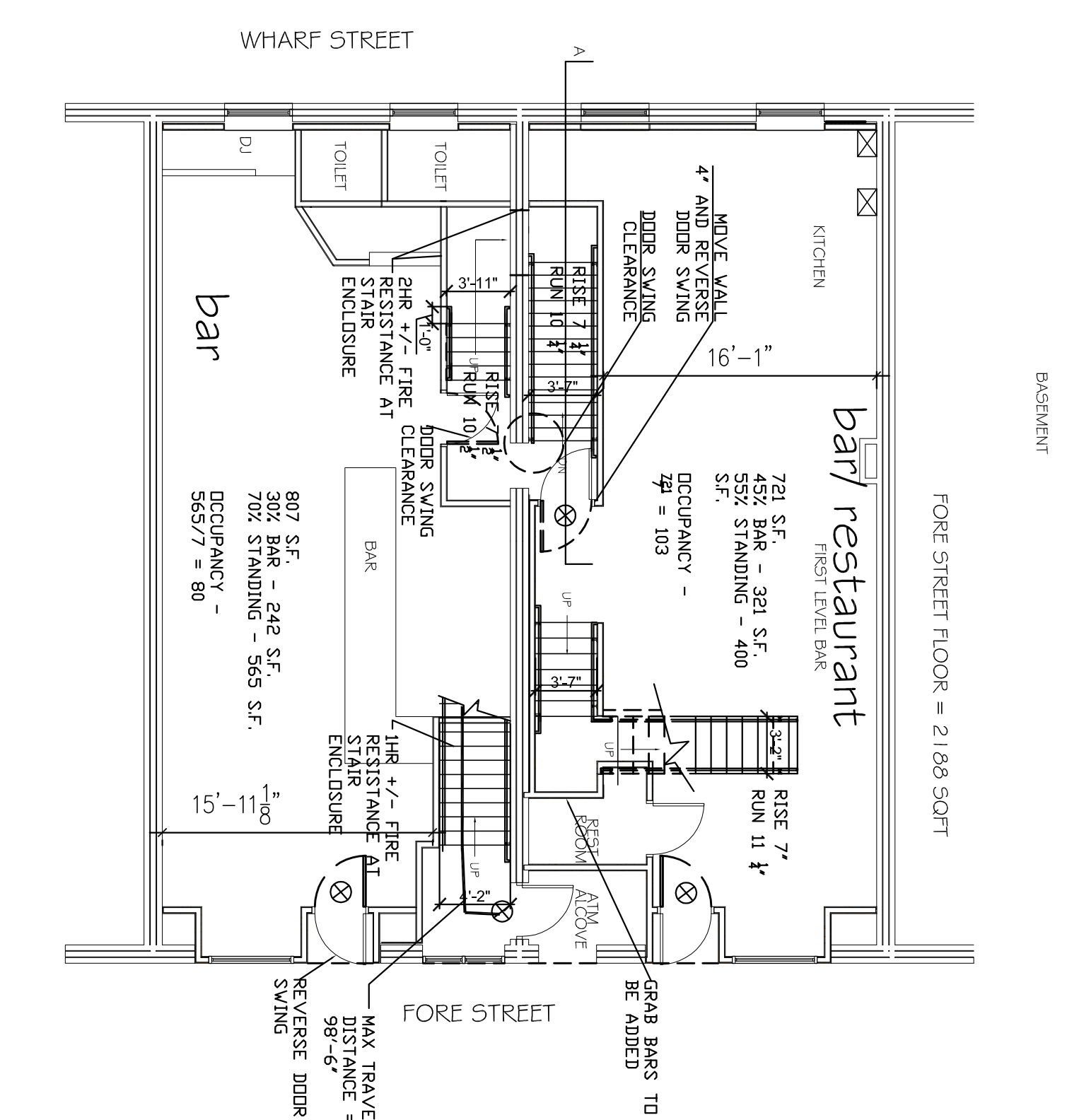
4 SECOND FLOOR PLAN  
A1.01 1/8" = 1'-0"



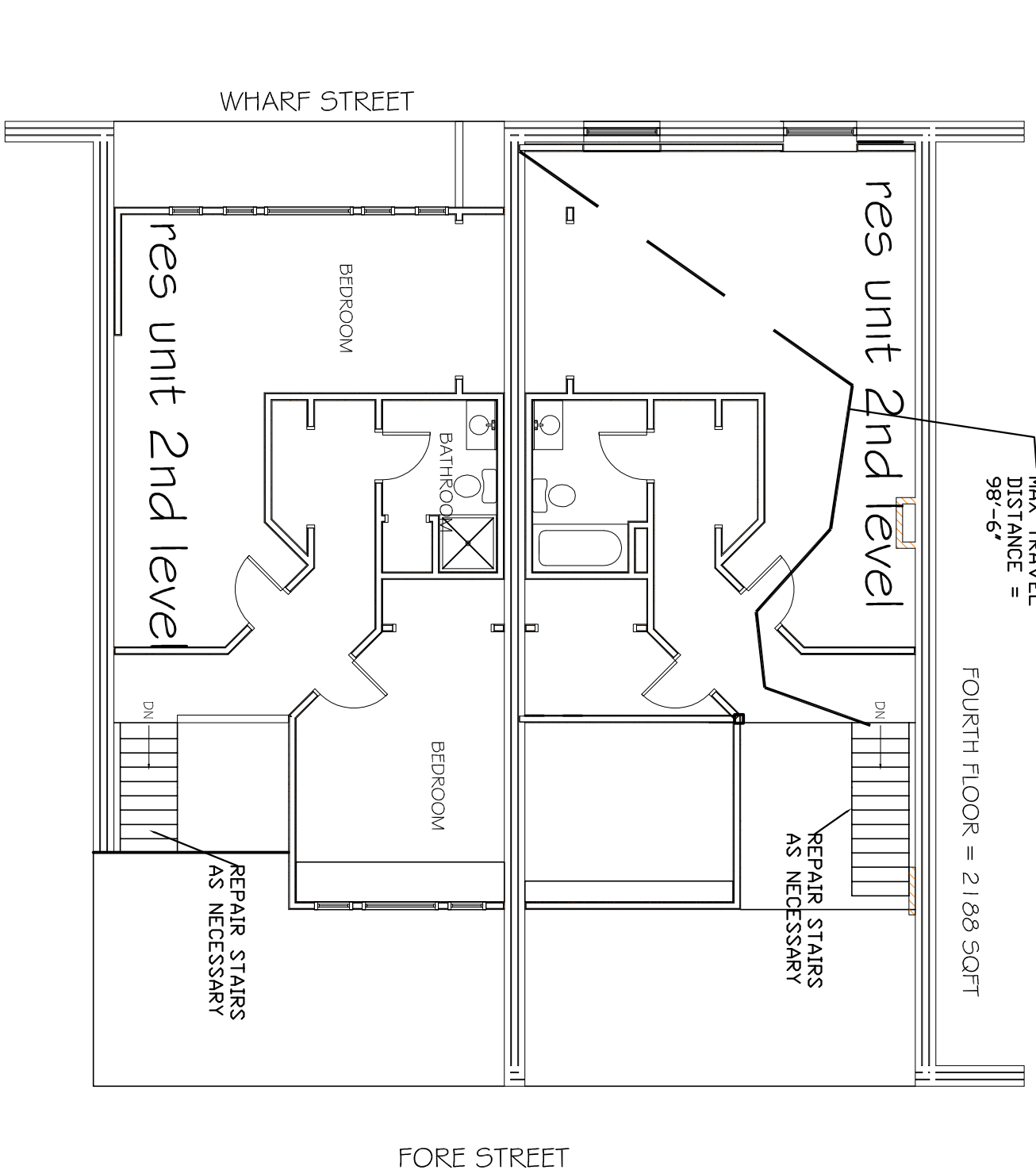
2 WHARF STREET FLOOR PLAN  
A1.01 1/8" = 1'-0"



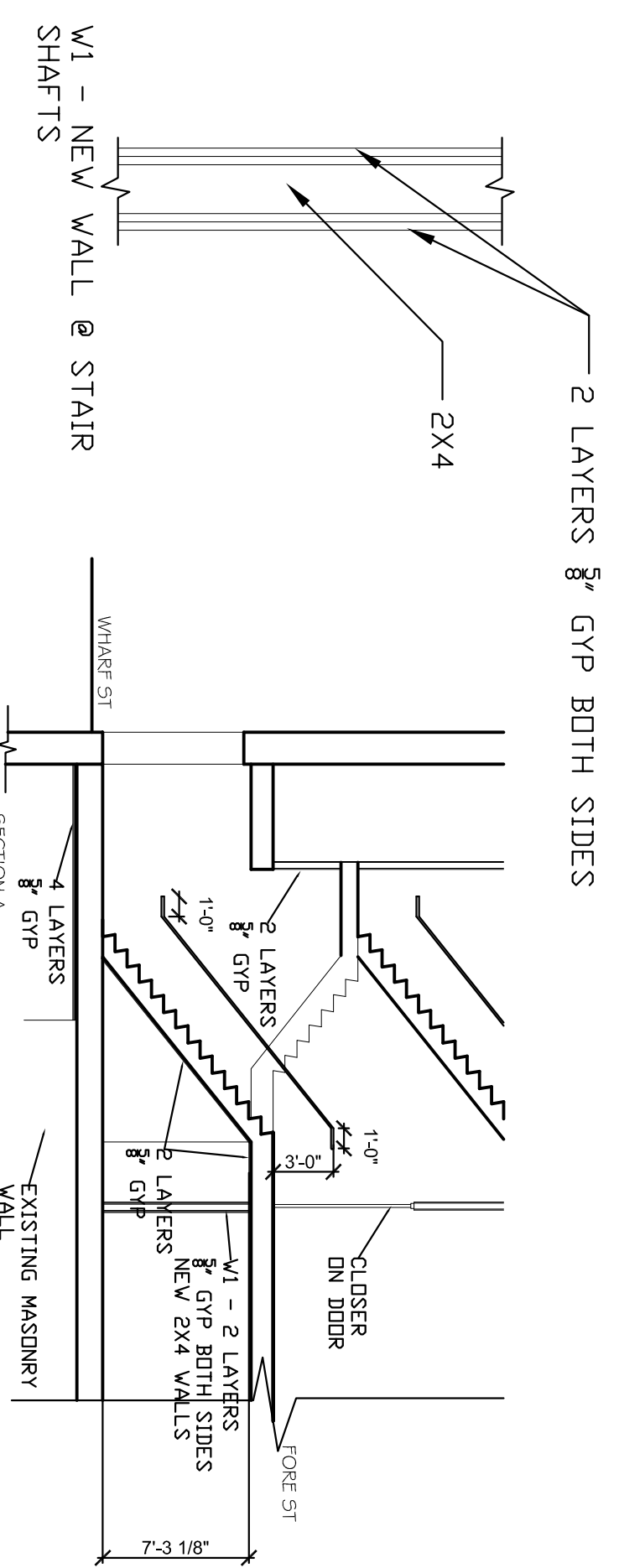
5 THIRD FLOOR PLAN  
A1.01 1/8" = 1'-0"



3 FORE STREET FLOOR PLAN  
A1.01 1/8" = 1'-0"



6 FOURTH FLOOR PLAN  
A1.01 1/8" = 1'-0"



CODE ANALYSIS  
Users: A-2,(Assembly), M, (Mercantile), R-2 (Residential)  
Construction Type 3B  
Building to sprinklered per NFPA13  
Note: This is not a change of use

Relevant codes  
NFPA 101 2009

Analysis for Exist. Apt. use Option 4  
Multiple occupancy per 6114  
R use permitted above non residential where sprinklered  
Exit enclosures 1hour + 1 hour door  
Stairs per 7.2.2  
Single exit from DU if  
1. sprinklered  
2. N/A  
3. N/A  
4. exit is 1 hour  
5. Door is 1 hour w/ closer  
6. Corridors are 1/2 hour  
7. DU separation is 1/2 hour

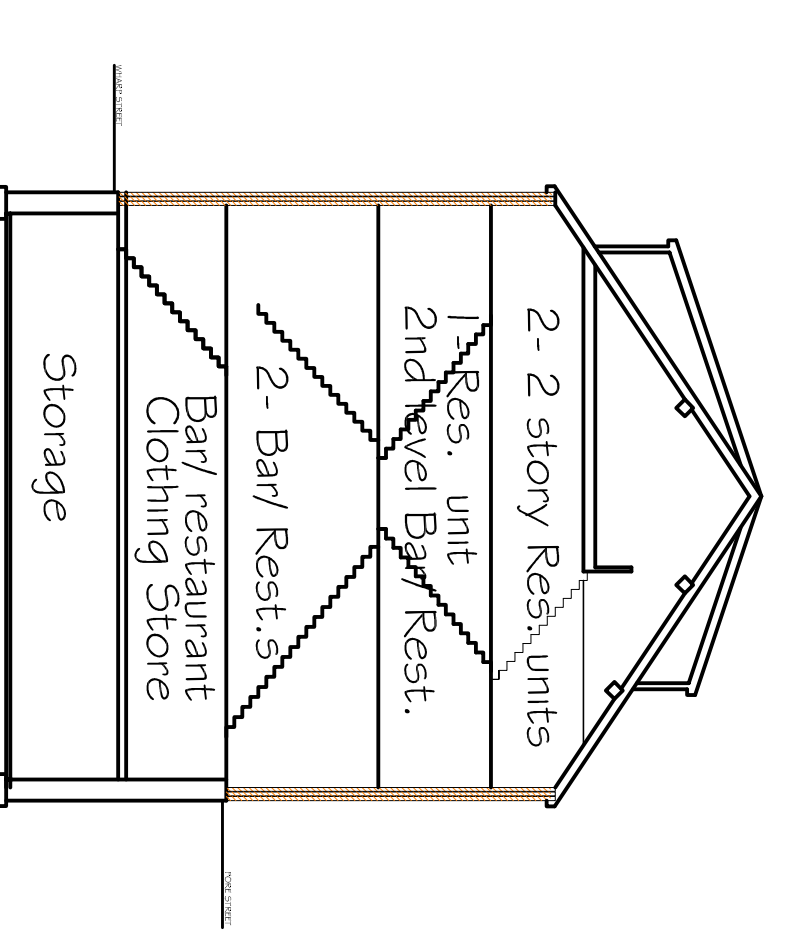
Means of egress light req.  
Emergency life req.  
Fireman's- Exit8, corridor class b/class c elsewhere  
Alarm by sprinkler + manual  
No smoke s if sprinklered

Analysis for Exist. Assembly Use  
2nd fl use permitted if sprinklered & 300 occup.  
Multiple occupancies per 6114  
Stairs comply w/7.2.2  
2 exits per 7.4 except at wharf street where 50 occupants  
Multi occupancies may be served by  
Common alarm system  
Alarm initiated by sprinkler  
Cooking equip. protected per NFPA96  
Class A finishes in stairway

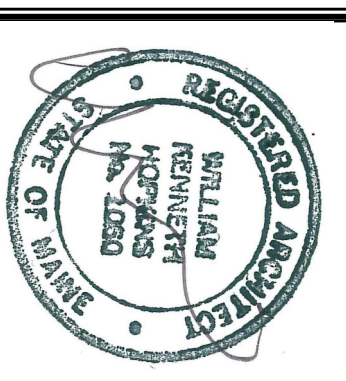
Stairs- See existing stair dimensions on plan  
max riser height = 8"  
Min tread depth=9"

Relevant codes  
International Existing Building Code 2009  
Level 2 Alterations

Group A vert. enclosure = 30 min. see NFPA R-2 satir enclosure not req. if sprinklered.  
see NFPA 703.2.11.1  
Single exit for A & M use if <50 occup. and travel distance <75'  
Exit not req. from every level in R-2 if travel distance with DU is <75'  
Standpipe not req. where < 50' to highest floor  
No heat detection req. if sprinklered  
Panic hardware req. if >100 occup.  
Energy code compliance not req.



7 SECTION- USES  
A1.01 1/16" = 1'-0"



Prepared For:

Consultant:

Architect:  
48 Union Wharf Portland, Maine 04101  
(207) 772-6022 Fax (207) 772-4056

Project:  
416,418, 420 FORE STREET  
424 FORE STREET PORTLAND, ME

Revisions:  
2015-3-27 RE-SUBMITTED  
2015-4-6 RE-SUBMITTED

Scale:  
As indicated

Date:  
2015-3-20

FLOOR PLANS  
A1.01