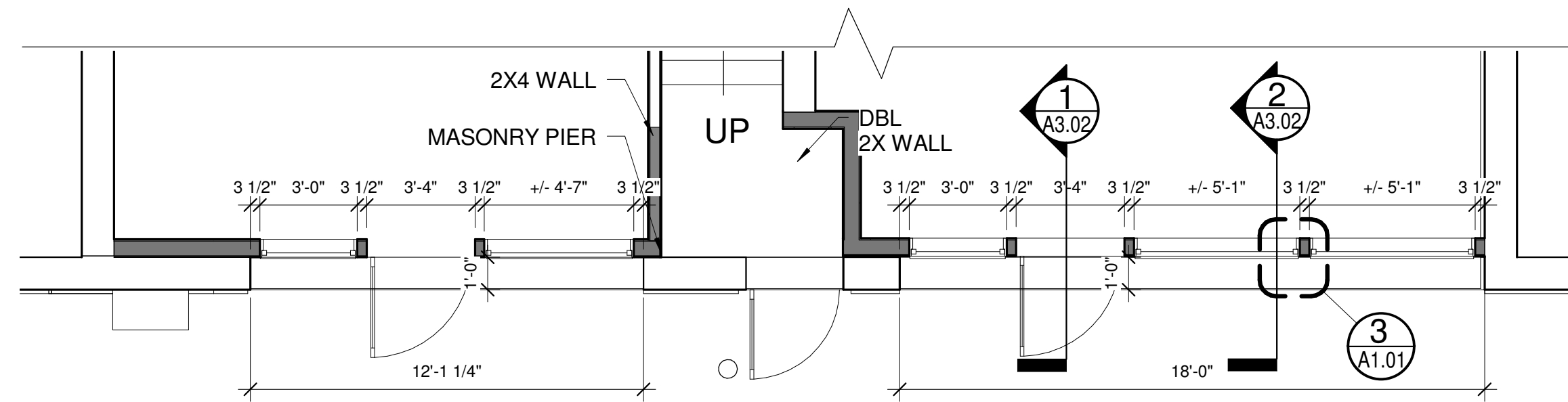


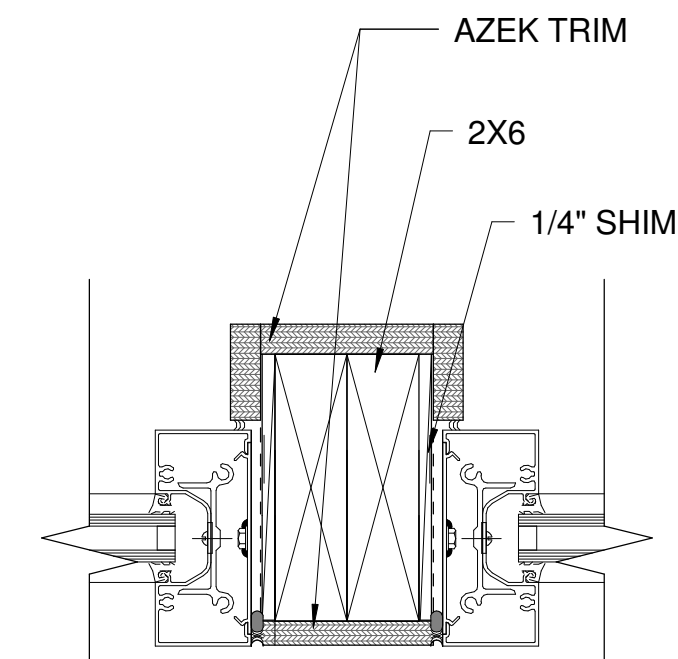
NOTES:
 -WINDOWS TO BE REPLACED ON ALL UPPER FLOORS W/
 UNIVERSAL SERIES 400 HISTORIC ALUMINUM WINDOWS. BLACK
 FRAME AND MULLIONS
 -REPAIR ENTRANCE PADS
 -REPAIR DAMAGED TRIM AND PANELING



2 WHARF STREET - ELEVATION
 1/4" = 1'-0"



1 WHARF STREET - PLAN
 1/4" = 1'-0"



3 STOREFRONT JAMB
 3" = 1'-0"

Prepared For:
Owner

Consultant:

ARCHETYPE
 architects
 48 Union Wharf Portland, Maine 04101
 (207) 772-6022 Fax (207) 772-4056

Project:
10 Exchange Street
 Portland, Maine

Revisions:

Scale:
 As indicated

Date:
 2-2-2015

**WHARF STREET PLAN &
 ELEVATION**

A1.01